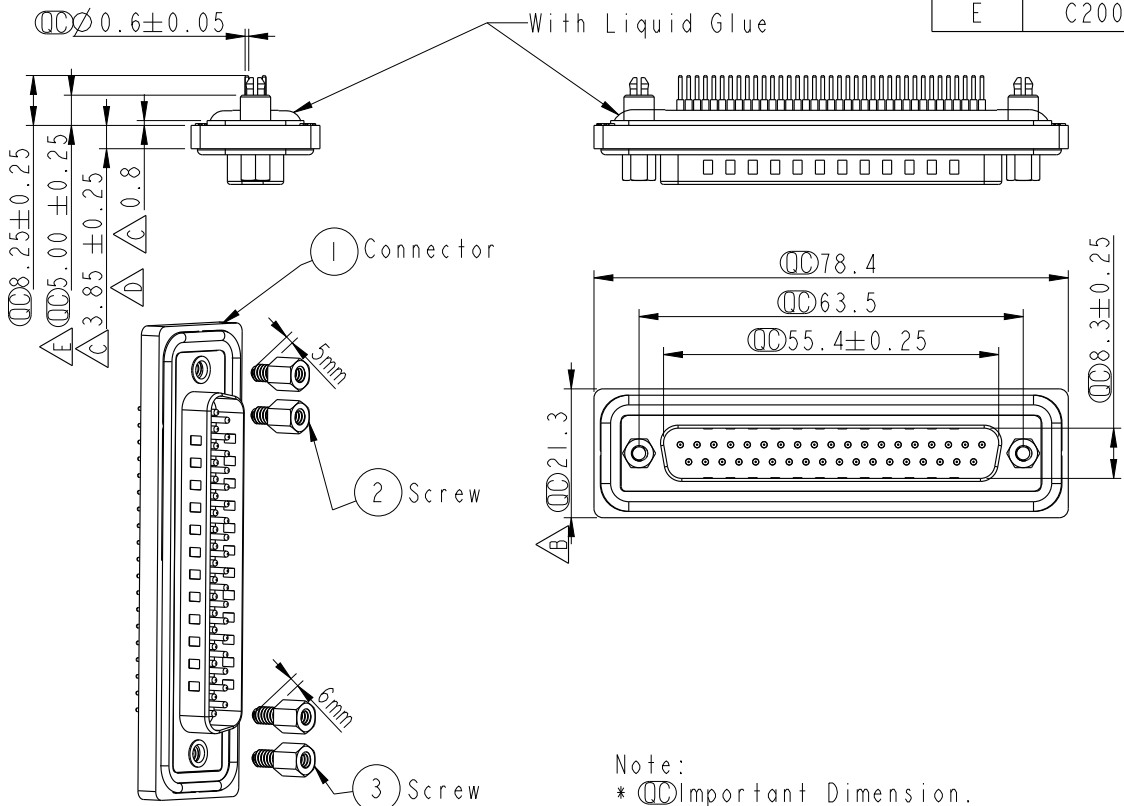
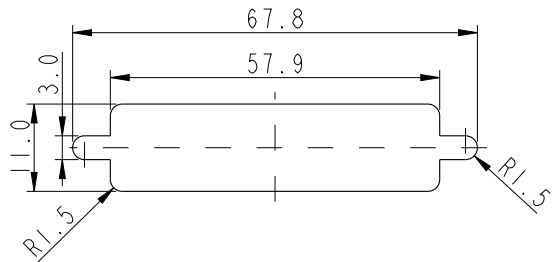


REV.	ECN NO.	DATE	SIGN	DESCRIPTION
C	LEN13B0246	2013/11/12	SAM	Modify Dimension.
D	LEN1740001	2017/04/17	Gaotong	Correct tolerance
E	C200615	2020/05/09	Peng	△ XI



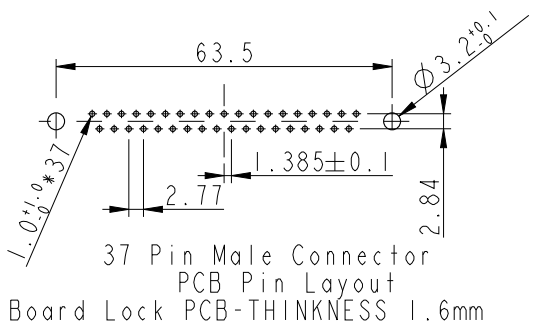
Screw L=5.0 For Panel Thickness Under 1.2mm
適用板厚為 1.2mm 以下

Screw L=6.0 For Panel Thickness Between 1.2~2.0mm
適用板厚為 1.2~2.0mm



Recommended Panel Cut-Out
建議控孔尺寸

- Note:
- * \varnothing Important Dimension.
 - * Waterproof Rate : IP67
 - * Do Mating Test After Glued
點膠後，須作對插測試
 - * D-SUB Conn. : Black Core, PBT
 - * Plastic Jacket : Black, Nylon+GF
 - * Male Pin : Copper Alloy, Gold Plated
 - * Ring : Light Blue, Silicone
 - * Screw : Copper Alloy, Nickel Plated, #4-40 UNC
 - * The 180° Board Lock Needs To Connect The Iron Shell
180° 型支架需接鐵殼



UNIT: mm			TITLE D-Sub Conn. 37 Pins PCB Type For Panel, PCB 180° Board Lock
TOLERANCE .X ±0.25 .XX ±0.1 .XXX ±0.05 ANGLES ±1°	SCALE 4:5	SIZE A4	SHEET 1 OF 1
REV. E	WC-REV. B.2	QC: Inspection item	

Amphenol LTW
安費諾亮泰企業股份有限公司

ITEM NO. SDB-37PMMP-SA7001	DRAWN BY Gaotong	DATE 2017/04/17
DWG NO. SDB-37PMMP-SA7001	CHECKED BY Kris	DATE 2017/04/17
CUSTOMER ALTW	APPROVED BY Max	DATE 2017/04/17

THIS DOCUMENT IS SUBJECT TO CHANGE WITHOUT NOTICE. IT IS CONFIDENTIAL AND A PROPERTY OF Amphenol LTW. DISCLOSURE TO THIRD PARTY HAS TO BE AUTHORIZED BY Amphenol LTW.