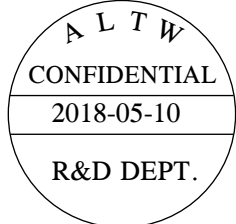
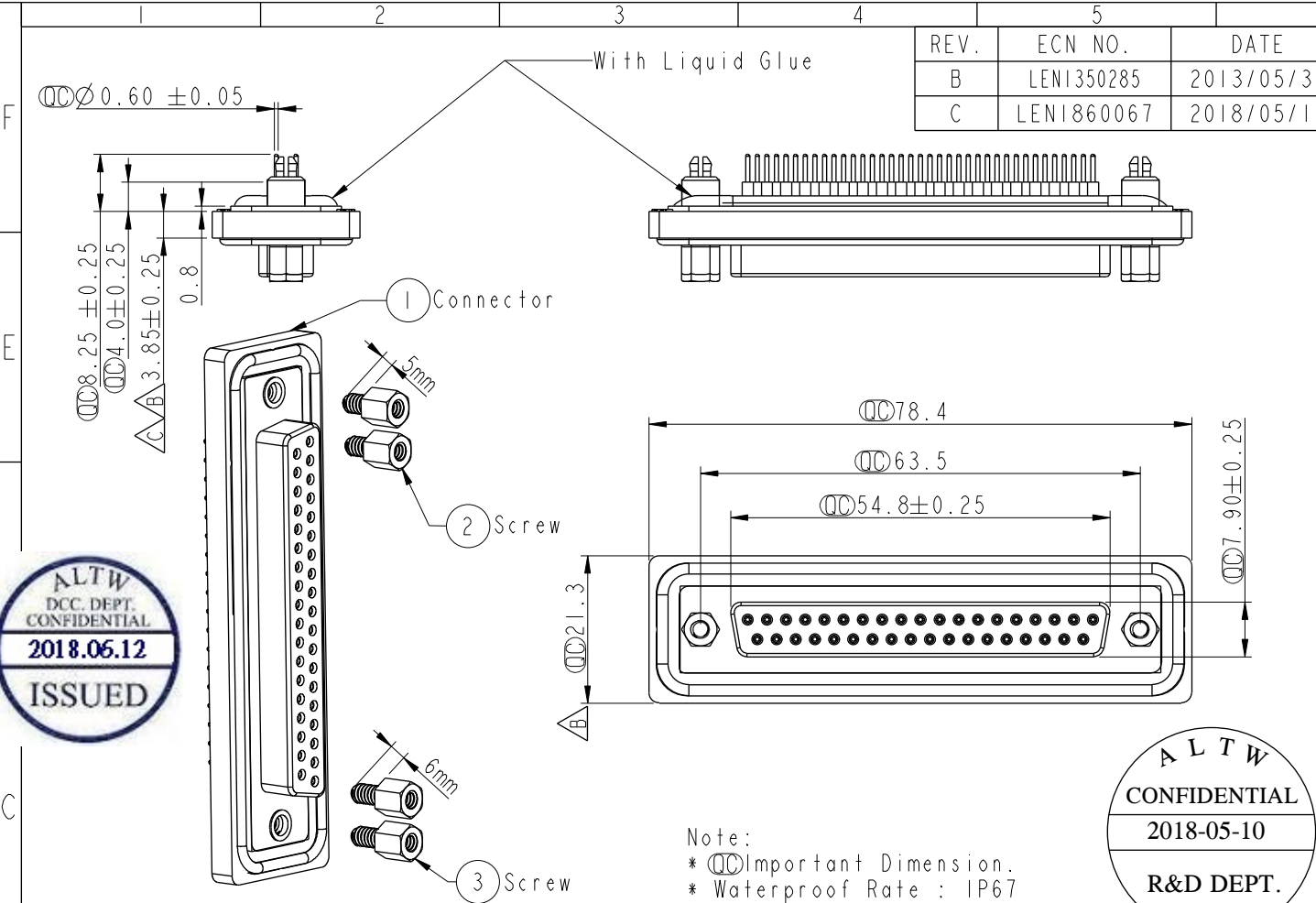


THIS DOCUMENT IS SUBJECT TO CHANGE WITHOUT NOTICE. IT IS CONFIDENTIAL AND A PROPERTY OF Amphenol LTW. DISCLOSURE TO THIRD PARTY HAS TO BE AUTHORIZED BY Amphenol LTW.

REV.	ECN NO.	DATE	SIGN	DESCRIPTION
B	LEN1350285	2013/05/31	Yulong	Update the Dimension
C	LEN1860067	2018/05/10	Richard	Modify Dimension

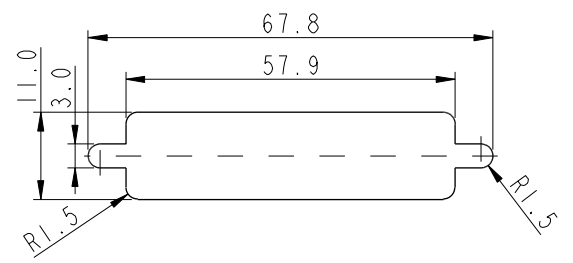


- Note:
- \*  $\varnothing$  Important Dimension.
  - \* Waterproof Rate : IP67
  - \* Do Mating Test After Glued  
點膠後，須作對插測試
  - \* D-SUB Conn. : Black Core, PBT.
  - \* Plastic Jacket : Black, Nylon+GF
  - \* Female Pin : Copper Alloy , Gold Plated
  - \* Ring : Light Blue, Silicone
  - \* Screw : Copper Alloy, Nickel Plated, #4-40 UNC
  - \* The 180° Board Lock Needs To Connect The Iron Shell  
180° 型支架需接鐵殼

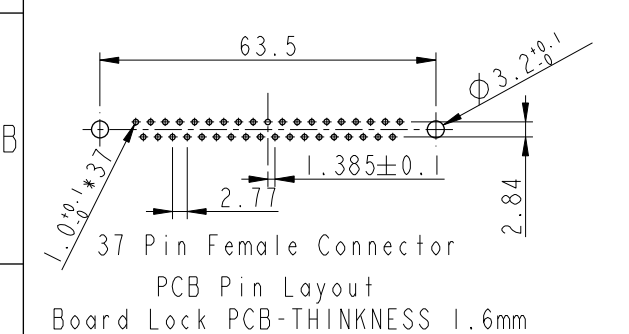


Screw L=5.0 For Panel Thickness Under 1.2mm  
適用板厚為 1.2mm 以下

Screw L=6.0 For Panel Thickness Between 1.2~2.0mm  
適用板厚為 1.2~2.0mm



Recommended Panel Cut-Out  
建議控孔尺寸



UNIT:mm			TITLE D-Sub Conn. 37 Pins PCB Type For Panel, PCB 180° Board Lock		
TOLERANCE	.X ±0.25	.XX ±0.1	SCALE 1:1	SIZE A4	SHEET 1 OF 1
ANGLES	.XXX ±0.05	±1°	REV. C	WC-REV. A.5	$\varnothing$ : Inspection item

**Amphenol LTW**  
安費諾亮泰企業股份有限公司

ITEM NO SDB-37PFFP-SA7001	DRAWN BY Richard	DATE 2018-05-10
DWG NO SDB-37PFFP-SA7001	CHECKED BY Neo	DATE 2018-05-10
CUSTOMER ALTW	APPROVED BY Max	DATE 2018-05-10