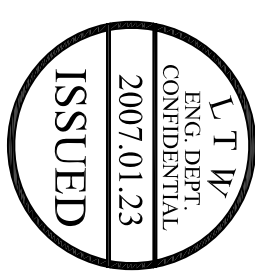
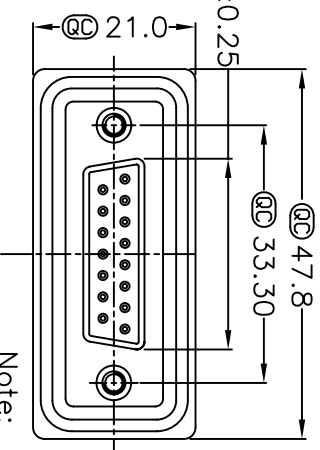
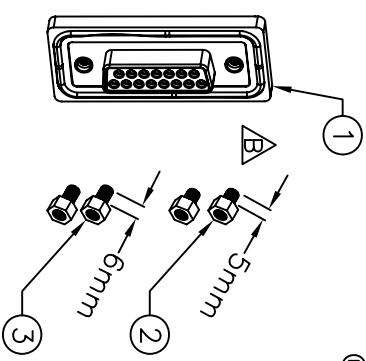
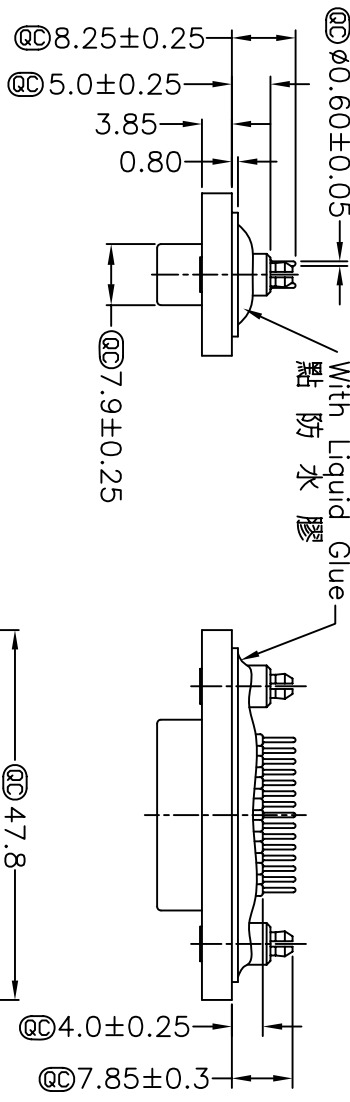


1	2	3	4	5	6	7	8	
				REV. A	EON NO.	DATE	SIGN	DESCRIPTION
				B	LE3-710136	2006/12/13	DAVID	Released Rev.A
							Gao Ling	Move 0-ring to Z5E00100773



Note:

\* @ Important Dimension.

\* Waterproof Rate : IP68

IP68:1M of depth of water 24 hours

(防水等級 IP68 )

( IP68:1米水深 24小時 )

\* Do Mating Test After Glued

點膠後, 須作對插測試

\* HD-SUB Conn. :Black Core , PBT

\* Plastic Jacket : Black , Nylon+GF

\* Pin : Copper Alloy , Gold Plated

\* Ring : Light Blue,Silicone

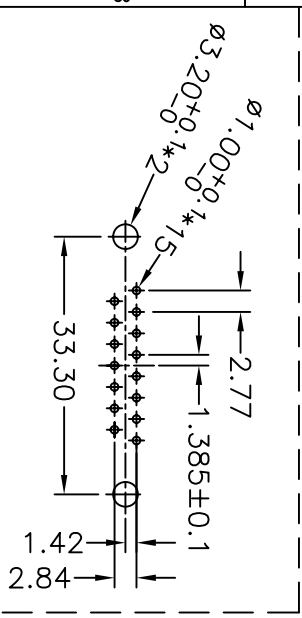
\* Screw : Copper Alloy,Nickel Plated,#4-40 UNC

\* The 180° Board Lock Needs

To Connect The Iron Shell

180° 型支架需接鐵殼

15 Pin Female Connector  
PCB Pin Layout



UNIT:mm  
TOLERANCE  
X ±0.25  
XX ±0.1  
XXX ±0.05  
ANGLES ±1°

TITLE  
D-SUB Connector 15Pin Female  
For Panel,PCB 180° Board Lock

SCALE  
Free

REV. B

SIZE A4

SHEET 1 OF 1

Inspection Item

L T W

亮泰企業股份有限公司

ITEM NO  
LTWSDB-15PFFP-SA8001

DWG NO  
LTWSDB-15PFFP-SA8001

CUSTOMER

DRAWN BY  
Gao Ling

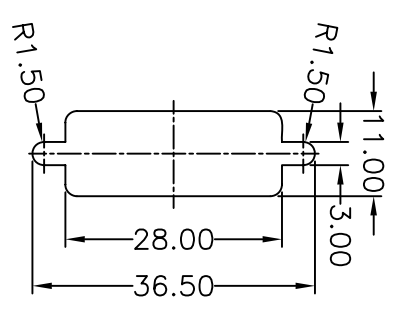
CHECKED BY  
SIMON

APPROVED BY  
MAX

DATE  
2006/12/13

DATE  
2006/12/22

DATE  
2006/12/22



Recommended Panel Cut-Out  
建議挖孔尺寸

Panel Thickness  
面板厚度  
(Max) X

Screw L=5.0 For Panel Thickness  
Under 1.2mm  
適用板厚為1.2mm以下

Screw L=6.0 For Panel Thickness  
Between 1.2~2.0mm  
適用板厚為1.2~2.0mm