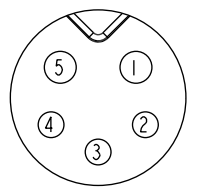
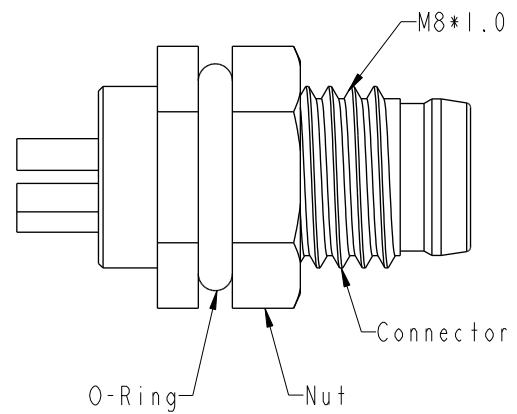
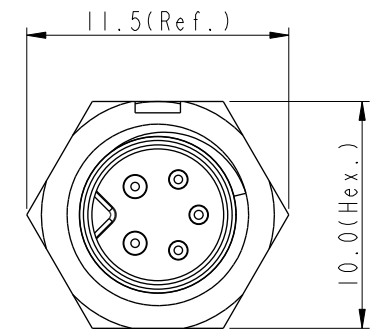
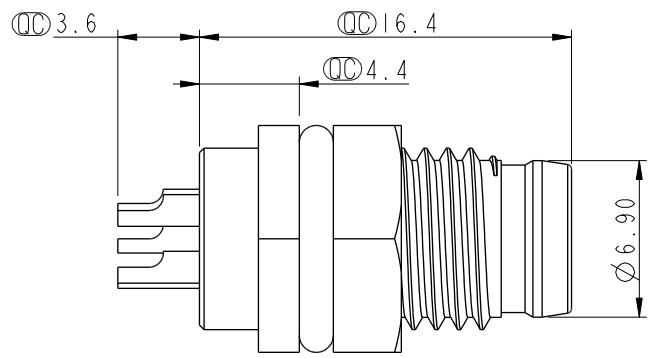
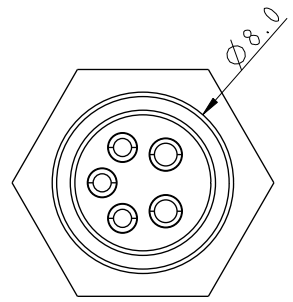
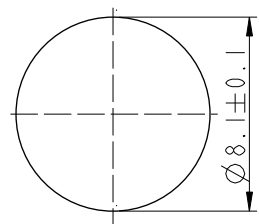


THIS DOCUMENT IS SUBJECT TO CHANGE WITHOUT NOTICE. IT IS CONFIDENTIAL AND A PROPERTY OF Amphenol LTW. DISCLOSURE TO THIRD PARTY HAS TO BE AUTHORIZED BY Amphenol LTW.

REV.	ECN NO.	DATE	SIGN	DESCRIPTION
B	C210686	2021/05/10	Vicky	$\triangle B$ X4
C	C221871	2022/12/02	Vicky	$\triangle C$ XI

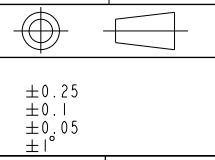


$\triangle B$
8HP-XXPMMS-SF7001
XX: No. Of Pin

- $\triangle B$ Note:
- * RoHS Compliant
 - * ϕ Important dimension
- $\triangle C$
- * Waterproof rate: IP67, unmated
 - * Connector
 - Housing: Thermoplastic, Black
 - Pin: Copper alloy, Gold plated
 - * Nut: Thermoplastic, Black
 - * O-Ring: Rubber, Black
 - * For panel thickness max: 3.0mm
 - * Nut is packed separately in pe bag

UNIT:mm

TOLERANCE	
.X	± 0.25
.XX	± 0.1
.XXX	± 0.05
ANGLES	$\pm 1^\circ$



TITLE O SEN, M8 W/KEY HY-PLASTIC RECEPTACLE, M, M, SOLDER $\triangle B$			
SCALE 3:1	SIZE A4	SHEET 1 OF 1	
REV. C	WC-REV. A.6	ϕ : Inspection item	

Amphenol LTW
安費諾亮泰企業股份有限公司

ITEM NO	DRAWN BY Mila	DATE 2013-12-19
DWG NO $\triangle B$ 8HP-XXPMMS-SF7001	CHECKED BY Jimmy	DATE 2013-12-19
CUSTOMER ALTW	APPROVED BY Jerry	DATE 2013-12-19

DATE 2013-12-19
DATE 2013-12-19
DATE 2013-12-19

DATE 2013-12-19
DATE 2013-12-19
DATE 2013-12-19