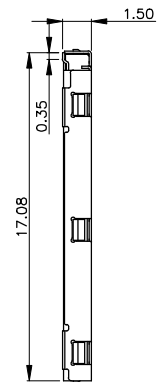
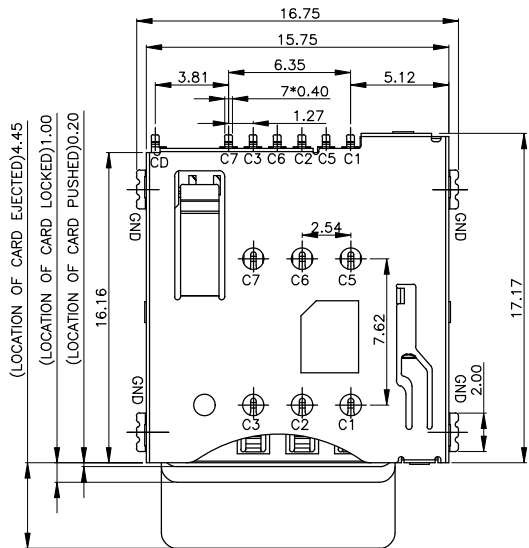


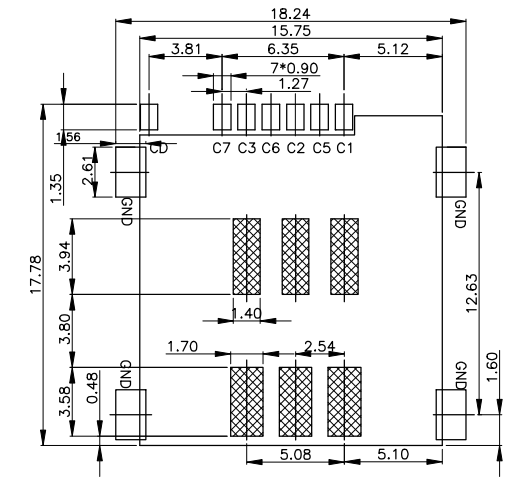


REV.	ECN NO OR DESCRIPTION	REVISED	DATE

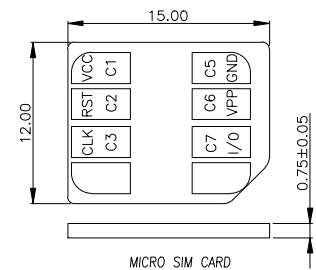
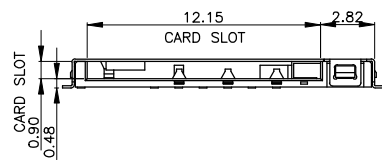
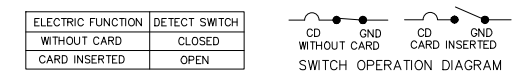


Connector Pin Assignment

Pin Name	Description
C1	Vcc of SIM
C2	RST of SIM
C3	CLK of SIM
C5	GND of SIM
C6	Vpp of SIM
C7	I/O of SIM
SW	Detection Switch



RECOMMENDED PCB LAYOUT
GENERAL TOLERANCE ±0.05



TECHNICAL CHARACTERISTICS

- General Characteristics
 - Dimensions: 15.75LX17.17WX1.50H mm
 - Weight: Approx 0.4±0.1g
 - Durability: 1500 cycles min.
- Electrical Characteristics
 - Contact resistance;
 - Date Contact: 150mΩ max
 - CD Switch: 500mΩ max
 - Insulation resistance: >1000MΩ/500V DC
- Solderability
 - Vapor phase: 215°C, 30sec. Max
 - IR reflow: 250°C, 5sec. Max
 - Manual soldering: 370°C, 3sec. Max
- Environmental Characteristics
 - Operating temperature: -40°C~+85°C
 - Operating humidity: 10%~+95%RH

ITEM	PART NAME	Q'TY	MATERIAL	FINISH
1	HOUSING	1	Hi-temp Thermoplastic	Black UL94V-0
2	DATA CONTACT	6	Copper Alloy	Contact area: Gold plated
3	CD SWITCH	1	Copper Alloy	Contact area: Gold plated
4	SHELL	1	Stainless Steel	SMT area: Gold plated
5	COIL SPRING	1	SWP	
6	HEART CAM	1	Hi-temp Thermoplastic	Black UL94V-0
7	CAM PIN	1	Stainless Steel	

UNLESS OTHERWISE SPECIFIED TOLERANCES

DECIMALS: X :±0.5 X.X :±0.20 X.XX :±0.10

ANGLES: X :±2° X.X :±1°

东莞市汉博电子科技有限公司
DONGGUAN HANBO TECHNOLOGY CO., LTD

TITLE	7Pin H1.5 push push micro sim card conn.		
DWN	xiong	PART NO. SMO-1560-P7	
CHKD	lee	SCALE: 1:1	UNIT: mm
APVD	wang	SIZE: A4	SHEET: 10F 1
REV: A4			

CUSTOMER COPY