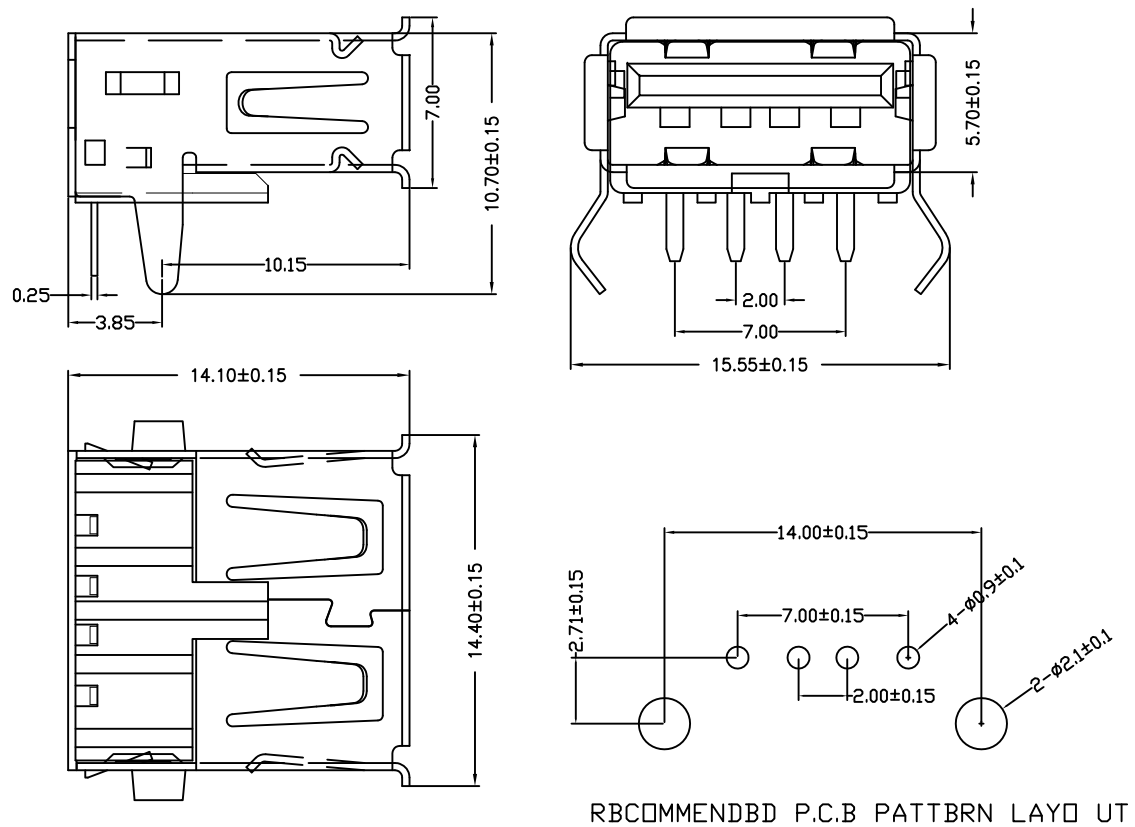


目錄 MAPX	设变内容 MODIFICATION	日期 DATE



RBCOMMENDBD P.C.B PATTBRN LAYD UT

备注：侧弹分为外弹与内弹

NOTES:
 Housing: Thermoplastics,UL94V-0
 Contact: Copper Alloy
 Shell: Copper Alloy/Steel
 Voltage Current Rating:1.5 AMP. 30V AC
 Insulation Resistance:1000MΩ Min.
 Contact Resistance:30 MΩ Max.
 Dielectric Withstanding Voltage:500W AC
 Temperature Range:-35℃ to +85℃
 Insulator color: Black/White
 Plastic material:PBT/LCP/Others
 Shell finish:Nickel plated/Tin-Lead plated
 Mechanical:
 Mating Force:3.5KG MAX
 Unmating Force:0.7 KG MIN.
 Contact finish:
 01:Selective Gold Flash
 02:Selective Gold 3U”
 03:Selective Gold 5U”
 04:Selective Gold 15U”
 05:Selective Gold 30U”

产品图 PRODUCT CHART DWG		深圳市精拓金电子有限公司					
公差一览表 TOLERANCE UNLESS OTHERWISE		单位 UNITS	MM	制图 DRAWING	Z-Y-B	产品料号 PRODUCT PART NO.	902-131A1011D10100
X.	±0.25	X’.	±5’	比例 SCALE	审核 CHKD	产品名称 PRODUCT NO.	AF90度内扣弯脚有边内弹铁壳 T型PBT白胶
.X	±0.20	.X’.	±2’				
.XX	±0.15	.XX’.	±1’	日期 DATE	2009/10/20	核准 APPD	雷永键
.XXX	±0.10	.XXX’.	±0.5’	角法 VIEW	⊙	版本 VER	A0