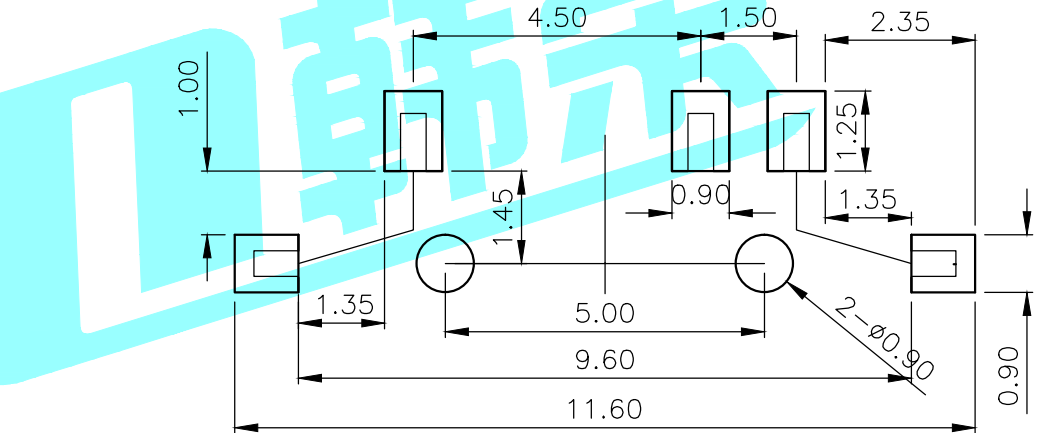
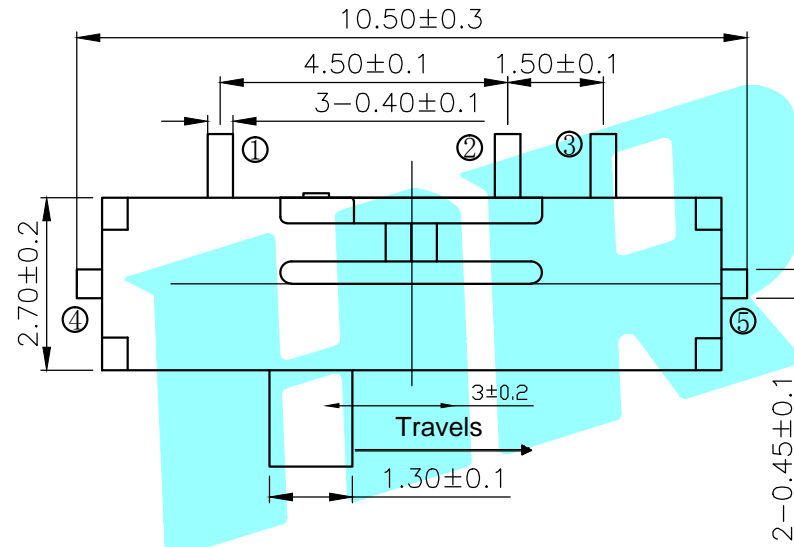
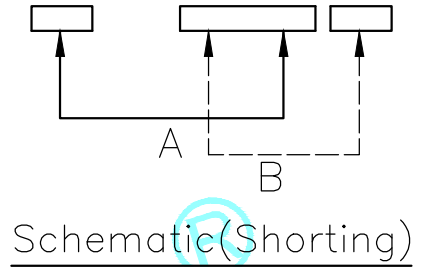
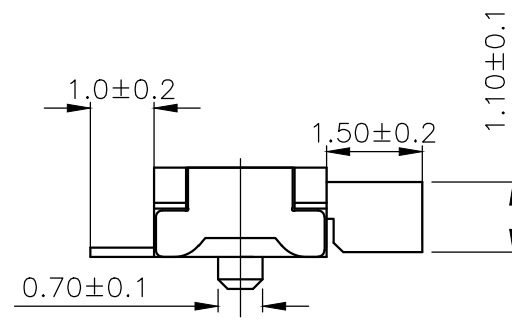
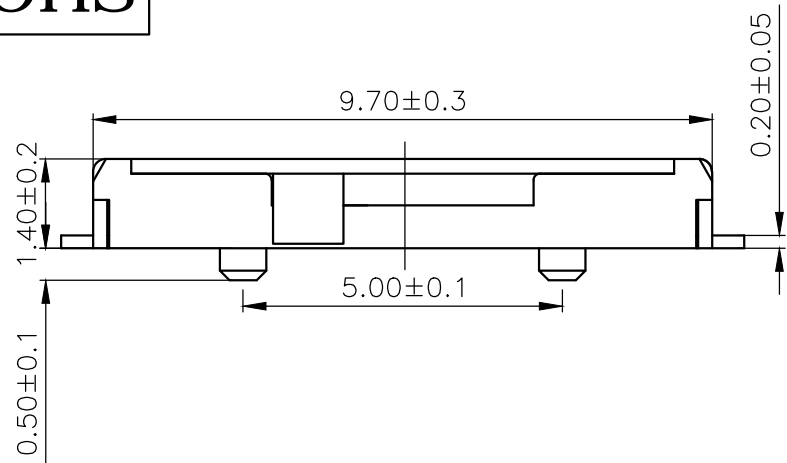


ROHS



P.C.B layout

Typical Specifications

1. Rating : 12V 0.1A DC
2. Operating force: 100±30gf
4. Operating Life : 10,000 cycles

⑥	Cover	—	1	Stainless Steel	Natural	—
⑤	Spring	—	1	Stainless Steel	Natural	—
④	Contact Clip	—	1	C5210	Ag Clad	—
③	Knob	—	1	PA	DarkCyan	—
②	Base	—	1	LCP	Black	—
①	Terminal	—	3	Brass	Ag Plated	—
ITEM	PART NAME	TER'NO.	QTY.	MATERIAL	FINISHING	REMARK

APPROVALS		DATE		 <b>ELECTRONICS CO.,LTD</b>		
DRAWN	JIANKUN.LU	2015.5.25				
CHECKED				PART NO.	K3-1297S	
APPROVALS				UNIT: mm	SCALE: 1:1	PROJ:
TOLERANCES ARE			30~以上	±0.30	DRAWING NO.	SHEET 1 OF 1
			10~30	±0.20		
			5~10	±0.15		
			~ 5	±0.10		
			ANGLE	±2'		

ECN NO.	REV.	DATE.	NEW	DESCRIPTION.	CHANGE.	CHECK.	APPRO.
	A						