



# Product Change Notification



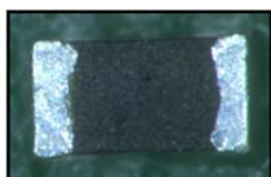
Product Group: Draloric/Beyschlag Resistors /December 15, 2016/PCN-DBR-011-2016 Rev0

## Thick Film Resistors CRCW0201 - Top Conductive Element Layer

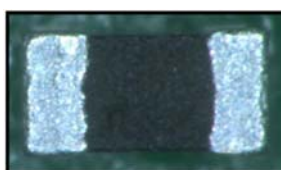
### DESCRIPTION OF CHANGE:

Add a second top conductive element layer

Before



After



**CLASSIFICATION OF CHANGE:** Design

**REASON FOR CHANGE:** Improve the shape and outline of top terminal

**EXPECTED INFLUENCE ON QUALITY/RELIABILITY/PERFORMANCE:** None. There will be no change in quality, reliability, or performance. It is only a visual issue

**PRODUCT CATEGORY:** Resistors

### PART NUMBERS/SERIES/FAMILIES AFFECTED:

CRCW0201xxxxxxx

**VISHAY BRAND(s):** Vishay

### TIME SCHEDULE:

Start Shipment Date: March 1, 2017

**SAMPLE AVAILABILITY:** December 15, 2016

Vishay Intertechnology, Inc.

Corporate Headquarters 63 Lincoln Highway, Malvern, PA 19355-2143 U.S.A. Phone (610) 644-1300 Fax (610) 296-0657 [www.vishay.com](http://www.vishay.com)

ONE OF THE WORLD'S LARGEST MANUFACTURERS OF DISCRETE SEMICONDUCTORS AND PASSIVE COMPONENT

**PRODUCT IDENTIFICATION:** None, there will be no change to the part number or packaging identification

**QUALIFICATION DATA:** Available. Will be provided per request.

**This PCN is considered approved, without further notification, unless we have received specific customer concerns before December 30, 2016 or as specified by contract.**

**ISSUED BY:** Shuki Likvornik, Sr. Product Manager Thick Film Resistors, [Shuki.Likvornik@Vishay.com](mailto:Shuki.Likvornik@Vishay.com)

**For further information, please contact your regional Vishay office.**

**CONTACT INFORMATION**

**The Americas**

Vishay Americas  
Paulo Adabo  
1122 23rd St  
Columbus, NE  
68601  
United States  
Phone: 1-402-563-6400  
Fax: 1-402-563-6565

**Europe**

Vishay Electronic GmbH  
Michael Hettrich  
Dr.-Felix-Zandman-Platz 1  
Selb  
D-95100  
Germany  
Phone: 49-9287-71-2122  
Fax: 49-9287-71-2299

**Asia**

Vishay Intertechnology Asia Pte Ltd  
Victor Goh  
37A Tampines Street 92  
#04-01  
528877  
Singapore  
Phone: 65-7780-7702  
Fax: 65-6780-7896

## Material

CRCW02010000Z0ED  
CRCW0201100KFNE  
CRCW0201100RFKE  
CRCW020110K0FKE  
CRCW0201120RFKE  
CRCW020113K0FKE  
CRCW02011K00FKE  
CRCW02011K50FKE  
CRCW020129R4FNE  
CRCW020133R0FNE  
CRCW020147K0FKE  
CRCW020149R9FKE  
CRCW02014K70FKE  
CRCW02014K75FKE  
CRCW0201510RFKE  
CRCW02015K11FKE  
CRCW0201100KFKE  
CRCW0201100RFNE  
CRCW020110K0FNE  
CRCW020110M0JNE  
CRCW020110R0FNE  
CRCW0201115KFKE  
CRCW0201120KFKE  
CRCW0201127KFKE  
CRCW020112K0FNE  
CRCW0201130KFKE  
CRCW020114R7FNE  
CRCW0201150RFKE  
CRCW020115K0FKE  
CRCW020115K0FNE  
CRCW0201160KFNE  
CRCW0201162RFNE  
CRCW020117R8FNE  
CRCW020118K0FKE  
CRCW020118K2FKE  
CRCW020118R0FNE  
CRCW02011K20FNE  
CRCW02011K20JNE  
CRCW02011K30FKE  
CRCW02011K40FNE  
CRCW02011K50FNE  
CRCW02011K60FKE  
CRCW02011K62FKE  
CRCW02011K82FNE  
CRCW02011K96FNE  
CRCW02011M00FKE

CRCW0201200RFKED  
CRCW0201200RFNED  
CRCW0201205KFNED  
CRCW020120K0FKED  
CRCW020120K0FNED  
CRCW020120K0JNED  
CRCW020120R0FNED  
CRCW0201220RFKED  
CRCW020122R0FNED  
CRCW020122R1FNED  
CRCW020123R2FNED  
CRCW0201240RFKED  
CRCW020124R0FNED  
CRCW020124R9FNED  
CRCW0201270RJNED  
CRCW020127K0FKED  
CRCW020127R0FNED  
CRCW0201287KFNED  
CRCW02012K21FKED  
CRCW02012K21FNED  
CRCW02012K37FKED  
CRCW02012K40FNED  
CRCW0201300RFKED  
CRCW0201300RJNED  
CRCW020130K1FKED  
CRCW020130K9FNED  
CRCW0201330RFKED  
CRCW020133K0FKED  
CRCW020133R2FNED  
CRCW020136K0FNED  
CRCW0201374KFKED  
CRCW0201383KFKED  
CRCW020139R0FNED  
CRCW02013K30JNED  
CRCW02013K32FKED  
CRCW02013K90FKED  
CRCW020142R2FNED  
CRCW020143K0FKED  
CRCW020145R3FNED  
CRCW020146K4FNED  
CRCW0201470RFKED  
CRCW0201470RFNED  
CRCW0201475RFNED  
CRCW020147R0FKED  
CRCW020147R5FNED  
CRCW02014K70FNED  
CRCW02014K75FNED

CRCW020151K1FKED  
CRCW020151R0FKED  
CRCW020156K0FKED  
CRCW020156R0FNED  
CRCW020156R0JNED  
CRCW02015K60FKED  
CRCW02015K60JNED  
CRCW02015R90FXED  
CRCW020161R9FNED  
CRCW020168R1FNED  
CRCW0201698RFKED  
CRCW02016K19FKED  
CRCW02016K80FNED  
CRCW020171R5FKED  
CRCW0201750RFNED  
CRCW020175K0FKED  
CRCW020180K6FNED  
CRCW0201825RFNED  
CRCW020182R5FNED  
CRCW0201866KFNED  
CRCW02018K06FKED  
CRCW02019K53FKED