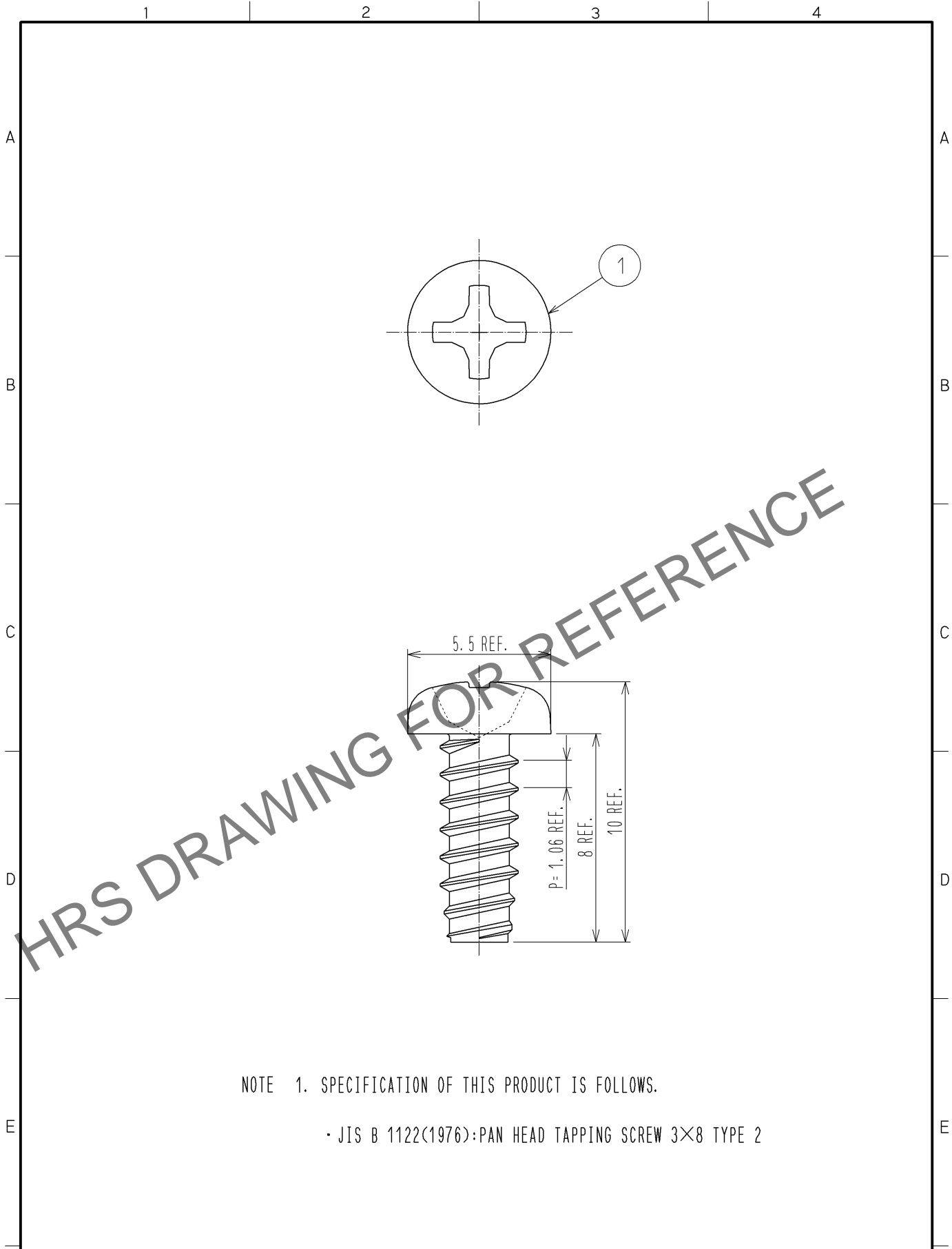


Jul.1.2024 Copyright 2024 HIROSE ELECTRIC CO., LTD. All Rights Reserved.
 In case of consideration for using Automotive equipment / device which demand high reliability, kindly contact our sales window correspondents.



NOTE 1. SPECIFICATION OF THIS PRODUCT IS FOLLOWS.

・ JIS B 1122(1976):PAN HEAD TAPPING SCREW 3×8 TYPE 2

| 1 | STEEL | NICKEL PLATING | | | | | | |
|----------------------------------|---------------------------|------------------|-------------|--------------------------|----------|------------------|---------|------|
| NO. | MATERIAL | FINISH . REMARKS | | NO. | MATERIAL | FINISH . REMARKS | | |
| UNITS mm | | SCALE 5 : 1 | COUNT | DESCRIPTION OF REVISIONS | | DESIGNED | CHECKED | DATE |
| HIROSE ELECTRIC CO., LTD. | APPROVED : NM. NISHIMATSU | 14. 10. 02 | DRAWING NO. | EDC3-128646-00 | | | | |
| | CHECKED : NM. NISHIMATSU | 14. 10. 02 | PART NO. | PS3C-1UP-TS | | | | |
| | DESIGNED : WR. YAMADA | 14. 10. 02 | CODE NO. | CL236-1068-6-00 | | | | |
| | DRAWN : WR. YAMADA | 14. 10. 02 | | | 1/1 | | | |