

Slide Switches

Miniature slide switches •



DISTINCTIVE FEATURES

- Miniature compact size
- Wash-through open fram construction
- Positive spring loaded ball detent mechanism
- Epoxy sealed terminals
- Solvent washing permitted



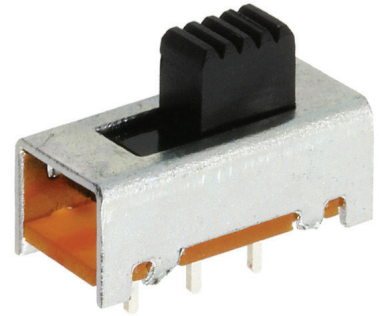
ENVIRONMENTAL SPECIFICATIONS

- Operating Temperature: -20 °C to +85 °C (-4 °F to +185 °F)
- Solder heat resistance: 260°C (500 °F) max for 5 seconds



ELECTRICAL SPECIFICATIONS

- See individual series
- Contact Resistance: 20 Ω max.
- Insulation Resistance: 100 M Ω min. at 500VDC
- Electrical life: 10,000 cycles min.
- Dielectric strength: 500 VAC for 1 minute



Slide switch series

Miniature slide switches • **MSTS SERIES**

SPECIFICATION

Contact rating: 300 mA at 28 VDC

Initial contact resistance: 20 milliohms max.

Insulation resistance: 100 megohms min. at 500 VDC

Dielectric strength: 500 VAC for 1 minute

Electrical life: 10,000 cycles min.

Operating temperature range: -20°C to +85°C

Actuation force: 200-600g

Solder heat resistance: 250°C max. for 5 seconds

Solvent washing permitted

FEATURES

- Miniature compact size
- Snap-in PC mounting bracket design
- Positive spring loaded ball detent mechanism
- Gold plated contacts available (contact factory)

MATERIALS

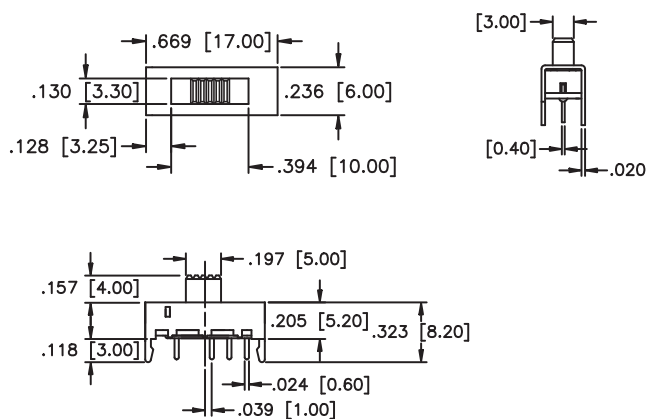
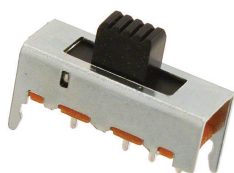
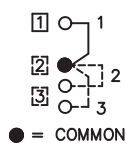
Contacts & terminals: Silver plated brass

Housing: Zinc plated steel

Actuator: Polyacetal, color black

Base: Phenolic laminated sheet

MSTS1332K



Slide switch series

Miniature slide switches • MHS SERIES

SPECIFICATION

Contact rating: 300 mA at 30 VDC
 Initial contact resistance: 20 milliohms max.
 Insulation resistance: 100 megohms min. at 500 VDC
 Dielectric strength: 500 VAC for 1 minute
 Electrical life: 10,000 cycles min.
 Operating temperature range: -20°C to +85°C
 Solder heat resistance: 260°C max. for 3 seconds
 Actuation force: 250 ±150 grams
 Solvent washing permitted

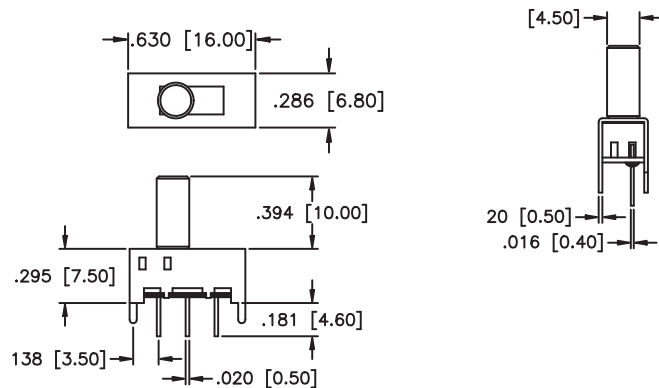
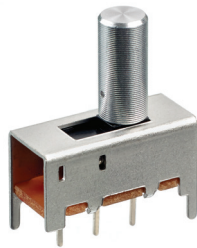
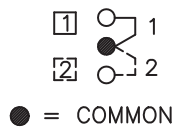
FEATURES

- Miniature compact size
- Wash-through open frame construction
- Positive spring loaded ball detent mechanism
- Epoxy sealed terminals

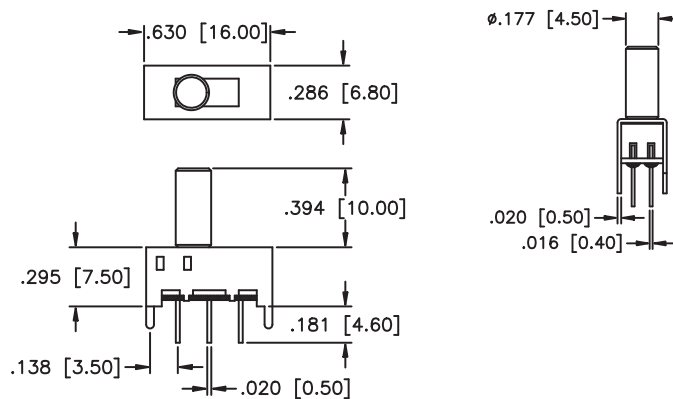
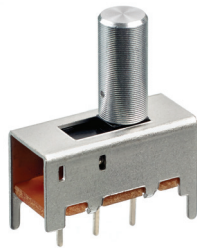
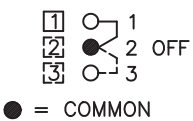
MATERIALS

Contacts & terminals: Silver plated brass
 Housing: Tin plated steel
 Actuator: Aluminum alloy
 Base: Phenolic laminated sheet

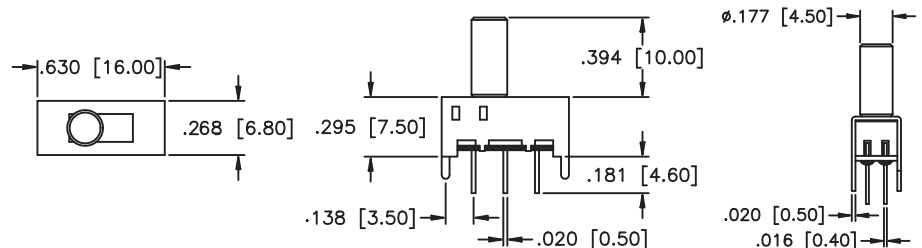
MHS122K



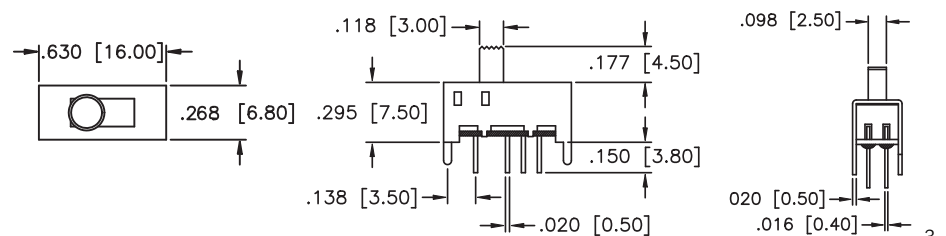
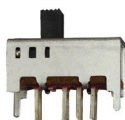
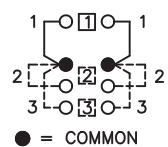
MHS123K



MHS223K



MHS233



Slide switch series

Miniature slide switches • **SLB SERIES**

SPECIFICATION

Contact rating: 300 mA at 125 VAC or 30 VDC
 Initial contact resistance: 20 milliohms max.
 Insulation resistance: 100 megohms min. at 500 VDC
 Dielectric strength: 500 volts RMS for 1 minute
 Electrical life: 10,000 cycles min.
 Operating temperature range: -20°C to +60°C
 Actuation force: 250 ±150 grams
 Solder heat resistance: 260°C max. for 3 seconds
 Solvent washing permitted

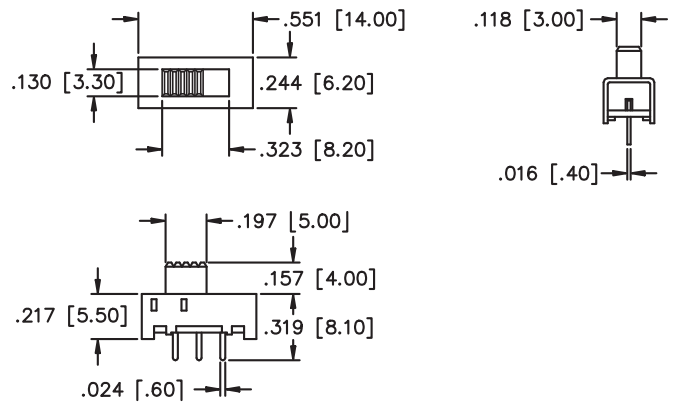
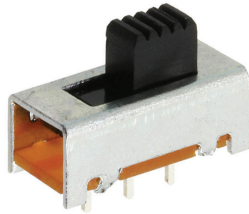
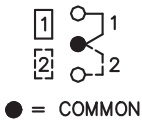
FEATURES

- Miniature compact size
- Wash-through open frame construction
- Positive spring loaded ball detent mechanism
- Epoxy sealed terminals

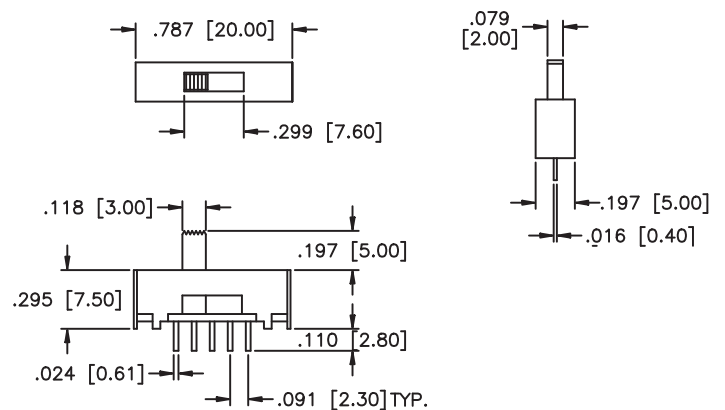
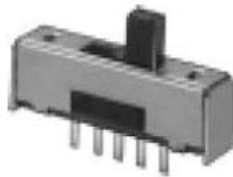
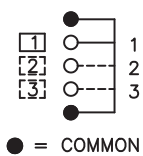
MATERIALS

Contacts: Silver plated
 Frame: Zinc plated steel
 Actuator: Thermoplastic
 Base: Phenolic laminated sheet

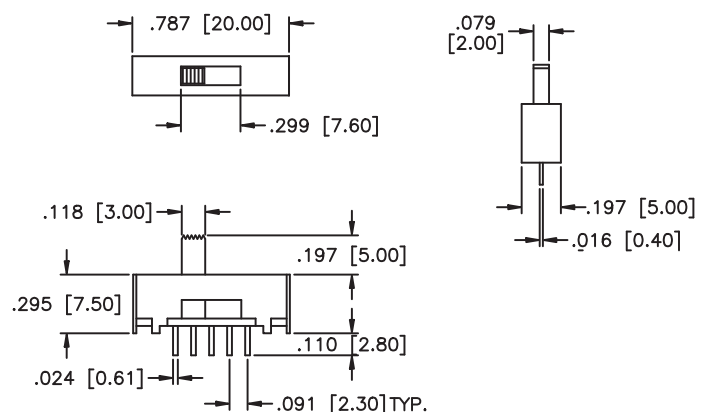
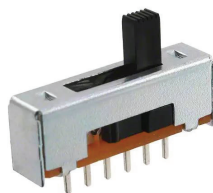
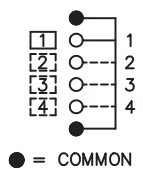
SLB12814



SLB1370



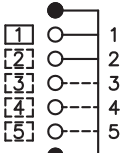
SLB1470



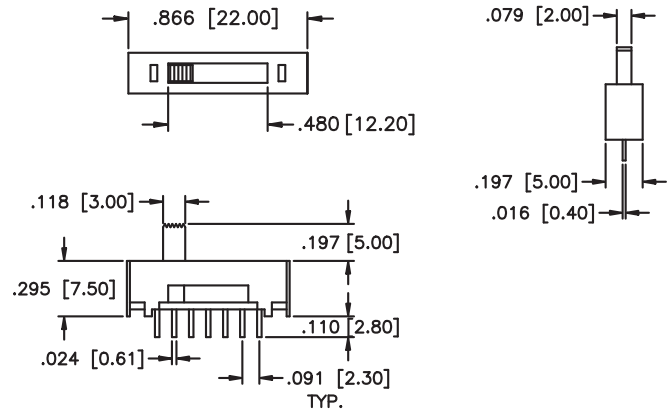
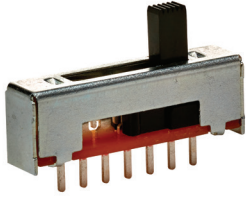
Slide switch series

Miniature slide switches • SLB / SLG SERIES

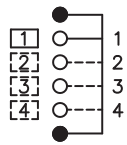
SLB1570



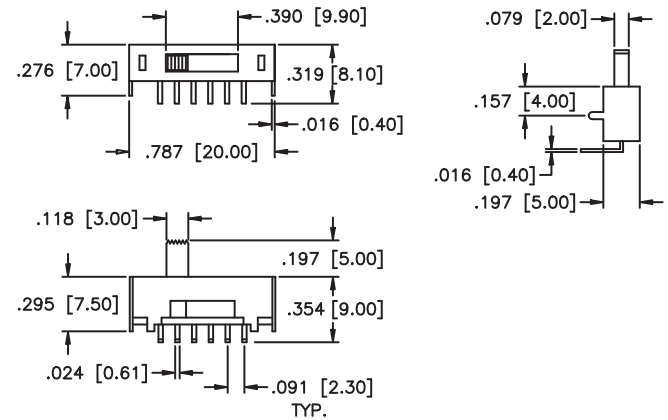
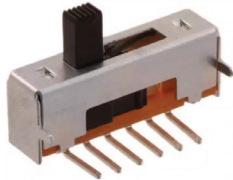
● = COMMON



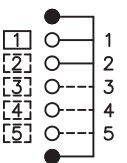
SLB1470R



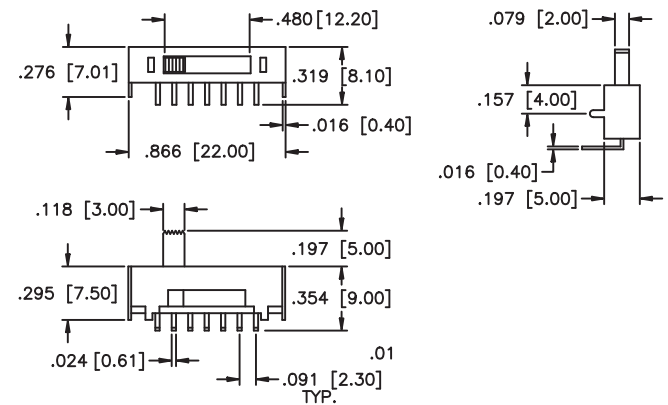
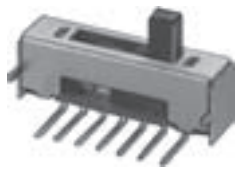
● = COMMON



SLB1570R



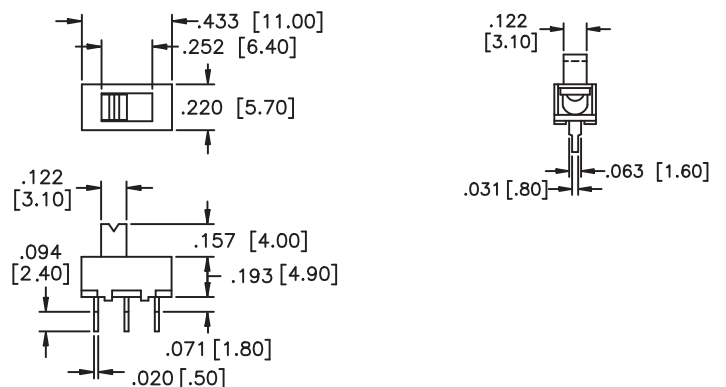
● = COMMON



SLG12014



● = COMMON



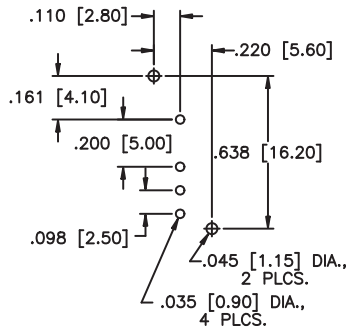
Slide switch series

Miniature slide switches •

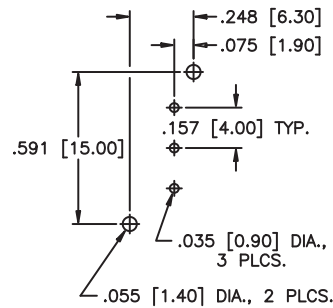


PCB LAYOUT

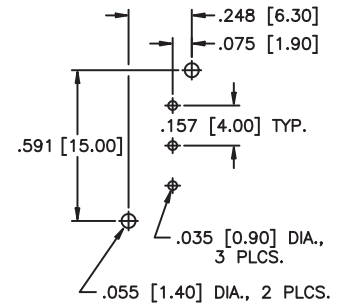
MSTS1332K



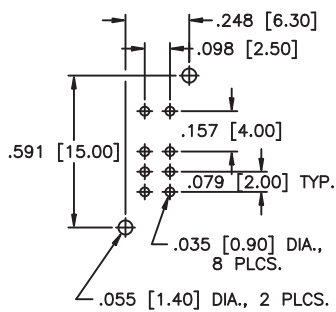
MHS122K



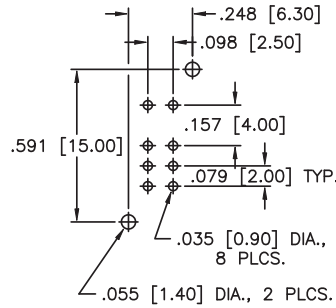
MHS123K



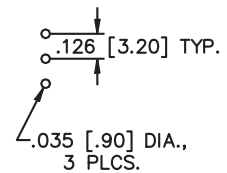
MHS233K



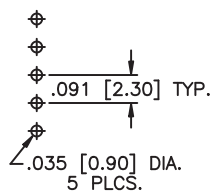
MS233



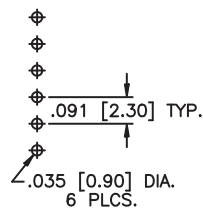
SLB12814



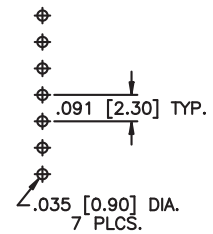
SLB1370



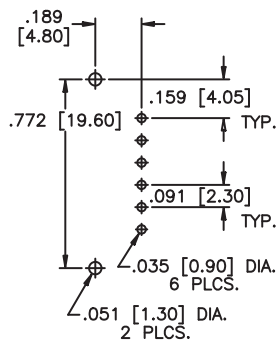
SLB1470



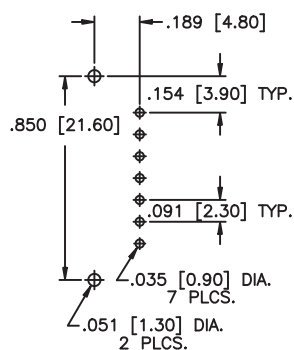
SLB1570



SLB1470R



SLB1570R



SLG12014

