

FTRV 4-FE /BKYE - Potential distributors



3270185

<https://www.phoenixcontact.com/us/products/3270185>

Please be informed that the data shown in this PDF document is generated from our online catalog. Please find the complete data in the user documentation. Our general terms of use for downloads are valid.



Potential distributors, without actuating push button, nom. voltage: 250 V, nominal current: 17.5 A, connection method: Push-in connection, 1st, 2nd, 3rd and 4th level, Rated cross section: 1.5 mm², cross section: 0.14 mm² - 2.5 mm², mounting: NS 35/7,5, NS 35/15, color: gray, color of connection elements: black, yellow

Your advantages

- Tool-free wiring in a confined space thanks to compact size
- Individual color assignment of cable and terminal point to ensure error-free, safe operation
- High contact quality thanks to push-in technology as a replacement for Wire-Wrap®, TERMI-POINT®, etc.
- Potential distributor in black-yellow version for marking the functional ground
- The 2.3 mm test pick-off enables testing between the conductors with commercially available test probes

Commercial data

Item number	3270185
Packing unit	10 pc
Minimum order quantity	1 pc
Product key	BE6211
Catalog page	Page 47 (C-1-2019)
GTIN	4055626046730
Weight per piece (including packing)	16.68 g
Weight per piece (excluding packing)	16.68 g
Country of origin	PL

Technical data

Product properties

Product type	Potential distributor
Number of positions	2
Number of connections	16
Number of rows	4
Potentials	1

Insulation characteristics

Overvoltage category	III
----------------------	-----

Electrical properties

Rated surge voltage	4 kV
Maximum power dissipation for nominal condition	0.56 W

Connection data

Number of connections per level	4
Nominal cross section	1.5 mm ²

1st, 2nd, 3rd and 4th level

Stripping length	8 mm ... 10 mm
Connection in acc. with standard	IEC 60947-7-1
Conductor cross section rigid	0.14 mm ² ... 2.5 mm ²
Cross section AWG	26 ... 14 (converted acc. to IEC)
Conductor cross section flexible	0.14 mm ² ... 1.5 mm ²
Conductor cross section, flexible [AWG]	26 ... 14 (converted acc. to IEC)
Conductor cross-section flexible (ferrule without plastic sleeve)	0.14 mm ² ... 1.5 mm ²
Flexible conductor cross section (ferrule with plastic sleeve)	0.14 mm ² ... 1.5 mm ²
Nominal current	17.5 A
Maximum load current	20 A (in case of a 2.5 mm ² conductor cross section, the maximum load current must not be exceeded by the total current of all connected conductors.)
Nominal voltage	250 V
Nominal cross section	1.5 mm ²

1st, 2nd, 3rd and 4th level Connection cross sections directly pluggable

Conductor cross section rigid	0.34 mm ² ... 2.5 mm ²
Conductor cross section, rigid [AWG]	20 ... 14 (converted acc. to IEC)
Conductor cross-section flexible (ferrule without plastic sleeve)	0.34 mm ² ... 1.5 mm ²
Flexible conductor cross section (ferrule with plastic sleeve)	0.34 mm ² ... 1.5 mm ²

Dimensions

Width	8.3 mm
-------	--------

Material specifications

FTRV 4-FE /BKYE - Potential distributors



3270185

<https://www.phoenixcontact.com/us/products/3270185>

Color	gray
Color of connection elements	black (2x top)
	yellow (2x bottom)
Flammability rating according to UL 94	V0
Insulating material group	I
Insulating material	PA
Static insulating material application in cold	-60 °C
Temperature index of insulation material (DIN EN 60216-1 (VDE 0304-21))	125 °C
Relative insulation material temperature index (Elec., UL 746 B)	130 °C
Fire protection for rail vehicles (DIN EN 45545-2) R22	HL 1 - HL 3
Fire protection for rail vehicles (DIN EN 45545-2) R23	HL 1 - HL 3
Fire protection for rail vehicles (DIN EN 45545-2) R24	HL 1 - HL 3
Fire protection for rail vehicles (DIN EN 45545-2) R26	HL 1 - HL 3
Calorimetric heat release NFPA 130 (ASTM E 1354)	27,5 MJ/kg
Surface flammability NFPA 130 (ASTM E 162)	passed
Specific optical density of smoke NFPA 130 (ASTM E 662)	passed
Smoke gas toxicity NFPA 130 (SMP 800C)	passed

Electrical tests

Surge voltage test

Test voltage setpoint	4.8 kV
Result	Test passed

Temperature-rise test

Requirement temperature-rise test	Increase in temperature \leq 45 K
Result	Test passed
Short-time withstand current 1.5 mm ²	0.18 kA
Short-time withstand current 2.5 mm ²	0.3 kA
Result	Test passed

Power-frequency withstand voltage

Test voltage setpoint	1.5 kV
Result	Test passed

Mechanical properties

Mechanical data

Open side panel	Yes
-----------------	-----

Mechanical tests

Mechanical strength

Result	Test passed
--------	-------------

Attachment on the carrier

3270185

<https://www.phoenixcontact.com/us/products/3270185>

DIN rail/fixing support	NS 35
Test force setpoint	1 N
Result	Test passed

Test for conductor damage and slackening

Rotation speed	10 rpm
Revolutions	135
Conductor cross section/weight	0.14 mm ² / 0.2 kg
	1.5 mm ² / 0.4 kg
	2.5 mm ² / 0.7 kg
Result	Test passed

Environmental and real-life conditions

Aging

Temperature cycles	192
Result	Test passed

Needle-flame test

Time of exposure	30 s
Result	Test passed

Oscillation/broadband noise

Specification	DIN EN 50155 (VDE 0115-200):2008-03
Spectrum	Service life test category 2, bogie-mounted
Frequency	$f_1 = 5 \text{ Hz}$ to $f_2 = 250 \text{ Hz}$
ASD level	6.12 (m/s ²) ² /Hz
Acceleration	3.12g
Test duration per axis	5 h
Test directions	X-, Y- and Z-axis
Result	Test passed

Shocks

Specification	DIN EN 50155 (VDE 0115-200):2008-03
Pulse shape	Half-sine
Acceleration	30g
Shock duration	18 ms
Number of shocks per direction	3
Test directions	X-, Y- and Z-axis (pos. and neg.)
Result	Test passed

Ambient conditions

Ambient temperature (operation)	-60 °C ... 105 °C (max. short-term operating temperature RTI Elec.)
Ambient temperature (storage/transport)	-25 °C ... 60 °C (for a short time, not exceeding 24 h, -60 °C to +70 °C)
Ambient temperature (assembly)	-5 °C ... 70 °C

FTRV 4-FE /BKYE - Potential distributors



3270185

<https://www.phoenixcontact.com/us/products/3270185>

Ambient temperature (actuation)	-5 °C ... 70 °C
Permissible humidity (storage/transport)	30 % ... 70 %

Standards and regulations

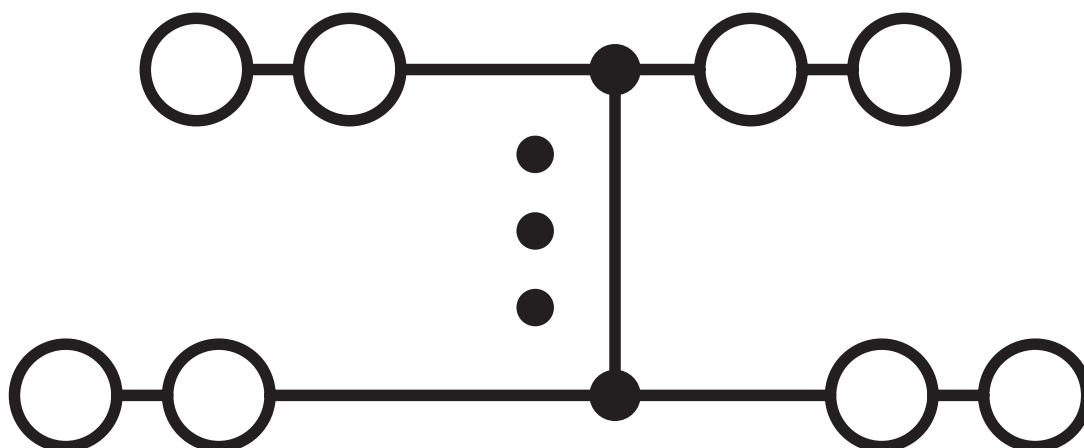
Connection in acc. with standard	IEC 60947-7-1
----------------------------------	---------------

Mounting

Mounting type	NS 35/7,5
	NS 35/15

Drawings

Circuit diagram



FTRV 4-FE /BKYE - Potential distributors



3270185

<https://www.phoenixcontact.com/us/products/3270185>

Classifications

ECLASS

ECLASS-11.0

27141120

ETIM

ETIM 8.0

EC000897

UNSPSC

UNSPSC 21.0

39121400

FTRV 4-FE /BKYE - Potential distributors



3270185

<https://www.phoenixcontact.com/us/products/3270185>

Environmental product compliance

EU RoHS

Fulfills EU RoHS substance requirements	Yes, No exemptions
-----------------------------------------	--------------------

China RoHS

Environment friendly use period (EFUP)	EFUP-E
	No hazardous substances above the limits

EU REACH SVHC

REACH candidate substance (CAS No.)	No substance above 0.1 wt%
-------------------------------------	----------------------------

FTRV 4-FE /BKYE - Potential distributors



3270185

<https://www.phoenixcontact.com/us/products/3270185>

Accessories

DP-PTRV 4 - Spacer plate

3270163

<https://www.phoenixcontact.com/us/products/3270163>



Spacer plate, depth: 54 mm, width: 8.3 mm, height: 63.6 mm, color: gray

CDC-PTRV - Retaining bracket

3270167

<https://www.phoenixcontact.com/us/products/3270167>



Retaining bracket, via four PTRV single modules, pitch: 8.3 mm, depth: 71.5 mm, width: 35.6 mm, height: 71.5 mm, color: gray

FTRV 4-FE /BKYE - Potential distributors

3270185

<https://www.phoenixcontact.com/us/products/3270185>



PT-IL - Mounting material

3208090

<https://www.phoenixcontact.com/us/products/3208090>

Operating decal for the push-in Technology



SZF 0-0,4X2,5 - Screwdriver

1204504

<https://www.phoenixcontact.com/us/products/1204504>



Actuation tool, for ST terminal blocks, also suitable for use as a bladed screwdriver, size: 0.4 x 2.5 x 75 mm, 2-component grip, with non-slip grip

FTRV 4-FE /BKYE - Potential distributors



3270185

<https://www.phoenixcontact.com/us/products/3270185>

ST-BW 0 - Actuation tool

1200135

<https://www.phoenixcontact.com/us/products/1200135>

Actuation tool, for all 1.5 mm² spring cages from PT 1,5/S and FT 1,5/S



RPS - Reducing plug

0201647

<https://www.phoenixcontact.com/us/products/0201647>

Reducing plug, number of positions: 1, color: gray



FTRV 4-FE /BKYE - Potential distributors

3270185

<https://www.phoenixcontact.com/us/products/3270185>

ZB 8,3:UNBEDRUCKT - Zack marker strip

0803444

<https://www.phoenixcontact.com/us/products/0803444>



Zack marker strip, Strip, white, unlabeled, can be labeled with: PLOTMARK, CMS-P1-PLOTTER, mounting type: snapped, for terminal block width: 8.3 mm, lettering field size: 10.5 x 8.3 mm

ZB 8,3,LGS:FORTL.ZAHLEN - Zack marker strip

0803480

<https://www.phoenixcontact.com/us/products/0803480>



Zack marker strip, Strip, white, labeled, can be labeled with: CMS-P1-PLOTTER, mounting type: snapped, for terminal block width: 8.3 mm, lettering field size: 10.5 x 8.3 mm

FTRV 4-FE /BKYE - Potential distributors



3270185

<https://www.phoenixcontact.com/us/products/3270185>

ZB 8,3,QR:FORTL.ZAHLEN - Zack marker strip

0803479

<https://www.phoenixcontact.com/us/products/0803479>



Zack marker strip, Strip, white, labeled, can be labeled with: CMS-P1-PLOTTER, mounting type: snapped, for terminal block width: 8.3 mm, lettering field size: 10.5 x 8.3 mm

ZB 8,3 CUS - Zack marker strip

8191573

<https://www.phoenixcontact.com/us/products/8191573>



Zack marker strip, Strip, white, labeled according to customer specifications, mounting type: snap into tall marker groove, for terminal block width: 8.3 mm, lettering field size: 10.5 x 8.3 mm

FTRV 4-FE /BKYE - Potential distributors

3270185

<https://www.phoenixcontact.com/us/products/3270185>

TM-PTRV 4,QR:1-4 - Marker for terminal blocks

0803464

<https://www.phoenixcontact.com/us/products/0803464>



Marker for terminal blocks, white, labeled, mounting type: snapped, for terminal block width: 4 mm, lettering field size: 2.4 x 9.2 mm

TM-PTRV 4,QR:4-1 - Marker for terminal blocks

0803465

<https://www.phoenixcontact.com/us/products/0803465>



Marker for terminal blocks, white, labeled, mounting type: snapped, for terminal block width: 4 mm, lettering field size: 2.4 x 9.2 mm

FTRV 4-FE /BKYE - Potential distributors

3270185

<https://www.phoenixcontact.com/us/products/3270185>

TM-PTRV 4,QR:A-D - Marker for terminal blocks

0803466

<https://www.phoenixcontact.com/us/products/0803466>



Marker for terminal blocks, white, labeled, mounting type: snapped, for terminal block width: 4 mm, lettering field size: 2.4 x 9.2 mm

TM-PTRV 4,QR:D-A - Marker for terminal blocks

0803467

<https://www.phoenixcontact.com/us/products/0803467>



Marker for terminal blocks, white, labeled, mounting type: snapped, for terminal block width: 4 mm, lettering field size: 2.4 x 9.2 mm

FTRV 4-FE /BKYE - Potential distributors

3270185

<https://www.phoenixcontact.com/us/products/3270185>

D-PTRV 4 WH - End cover

3270151

<https://www.phoenixcontact.com/us/products/3270151>

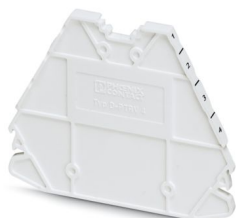


End cover, depth: 48.9 mm, width: 3.8 mm, height: 63.6 mm, color: white

D-PTRV 4 WH 1-4 - End cover

3270152

<https://www.phoenixcontact.com/us/products/3270152>



End cover, depth: 48.9 mm, width: 2.2 mm, height: 63.6 mm, color: white

FTRV 4-FE /BKYE - Potential distributors

3270185

<https://www.phoenixcontact.com/us/products/3270185>

D-PTRV 4 WH 1-4 LGS - End cover

3270234

<https://www.phoenixcontact.com/us/products/3270234>



End cover, depth: 48.9 mm, width: 2.2 mm, height: 63.6 mm, color: white

D-PTRV 4 WH 4-1 - End cover

3270236

<https://www.phoenixcontact.com/us/products/3270236>



End cover, depth: 48.9 mm, width: 2.2 mm, height: 63.6 mm, color: white

FTRV 4-FE /BKYE - Potential distributors



3270185

<https://www.phoenixcontact.com/us/products/3270185>

D-PTRV 4 WH 4-1 LGS - End cover

3270238

<https://www.phoenixcontact.com/us/products/3270238>

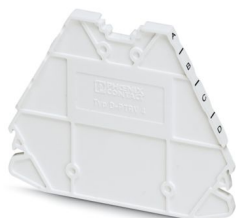


End cover, depth: 48.9 mm, width: 2.2 mm, height: 63.6 mm, color: white

D-PTRV 4 WH A-D - End cover

3270153

<https://www.phoenixcontact.com/us/products/3270153>



End cover, depth: 48.9 mm, width: 2.2 mm, height: 63.6 mm, color: white

FTRV 4-FE /BKYE - Potential distributors



3270185

<https://www.phoenixcontact.com/us/products/3270185>

D-PTRV 4 WH A-D LGS - End cover

3270235

<https://www.phoenixcontact.com/us/products/3270235>



End cover, depth: 48.9 mm, width: 2.2 mm, height: 63.6 mm, color: white

D-PTRV 4 WH D-A - End cover

3270237

<https://www.phoenixcontact.com/us/products/3270237>



End cover, depth: 48.9 mm, width: 2.2 mm, height: 63.6 mm, color: white

FTRV 4-FE /BKYE - Potential distributors

3270185

<https://www.phoenixcontact.com/us/products/3270185>



D-PTRV 4 WH D-A LGS - End cover

3270239

<https://www.phoenixcontact.com/us/products/3270239>



End cover, depth: 48.9 mm, width: 2.2 mm, height: 63.6 mm, color: white

NS 35/ 7,5 PERF 2000MM - DIN rail perforated

0801733

<https://www.phoenixcontact.com/us/products/0801733>



DIN rail perforated, Pack of 25 (50 m), acc. to EN 60715, material: Steel, galvanized, passivated with a thick layer, Standard profile, color: silver

FTRV 4-FE /BKYE - Potential distributors

3270185

<https://www.phoenixcontact.com/us/products/3270185>

NS 35/ 7,5 UNPERF 2000MM - DIN rail, unperforated

0801681

<https://www.phoenixcontact.com/us/products/0801681>



DIN rail, unperforated, Pack of 25 (50 m), acc. to EN 60715, material: Steel, galvanized, passivated with a thick layer, Standard profile, color: silver

NS 35/ 7,5 WH PERF 2000MM - DIN rail perforated

1204119

<https://www.phoenixcontact.com/us/products/1204119>



DIN rail perforated, Pack of 25 (50 m), acc. to EN 60715, material: Steel, Galvanized, white passivated, Standard profile, color: silver

FTRV 4-FE /BKYE - Potential distributors



3270185

<https://www.phoenixcontact.com/us/products/3270185>

NS 35/ 7,5 WH UNPERF 2000MM-VPE 10 - DIN rail, unperforated

1204122

<https://www.phoenixcontact.com/us/products/1204122>



DIN rail, unperforated, Pack of 10 (20 m), acc. to EN 60715, material: Steel, Galvanized, white passivated, Standard profile, color: silver

NS 35/ 7,5 AL UNPERF 2000MM - DIN rail, unperforated

0801704

<https://www.phoenixcontact.com/us/products/0801704>



DIN rail, unperforated, Pack of 25 (50 m), acc. to EN 60715, material: Aluminum, uncoated, Standard profile, color: silver

FTRV 4-FE /BKYE - Potential distributors



3270185

<https://www.phoenixcontact.com/us/products/3270185>

NS 35/ 7,5 ZN PERF 2000MM - DIN rail perforated

1206421

<https://www.phoenixcontact.com/us/products/1206421>



DIN rail perforated, Pack of 25 (50 m), acc. to EN 60715, material: Steel, galvanized, Standard profile, color: silver

NS 35/ 7,5 ZN UNPERF 2000MM - DIN rail, unperforated

1206434

<https://www.phoenixcontact.com/us/products/1206434>



DIN rail, unperforated, Pack of 25 (50 m), acc. to EN 60715, material: Steel, galvanized, Standard profile, color: silver

FTRV 4-FE /BKYE - Potential distributors

3270185

<https://www.phoenixcontact.com/us/products/3270185>



NS 35/ 7,5 CU UNPERF 2000MM-VPE 10 - DIN rail, unperforated

0801762

<https://www.phoenixcontact.com/us/products/0801762>



DIN rail, unperforated, Pack of 10 (20 m), acc. to EN 60715, material: Copper, uncoated, Standard profile, color: copper-colored

NS 35/ 7,5 CAP - End cap

1206560

<https://www.phoenixcontact.com/us/products/1206560>

DIN rail end piece, for DIN rail NS 35/7.5



FTRV 4-FE /BKYE - Potential distributors

3270185

<https://www.phoenixcontact.com/us/products/3270185>

CLIPFIX 35 - End bracket

3022218

<https://www.phoenixcontact.com/us/products/3022218>



Quick mounting end clamp for NS 35/7,5 DIN rail or NS 35/15 DIN rail, with marking option, width: 9.5 mm, color: gray

CLIPFIX 35-5 - End bracket

3022276

<https://www.phoenixcontact.com/us/products/3022276>



Quick mounting end clamp for NS 35/7,5 DIN rail or NS 35/15 DIN rail, with marking option, with parking option for FBS...5, FBS...6, KSS 5, KSS 6, width: 5.15 mm, color: gray

FTRV 4-FE /BKYE - Potential distributors

3270185

<https://www.phoenixcontact.com/us/products/3270185>

E/NS 35 N - End bracket

0800886

<https://www.phoenixcontact.com/us/products/0800886>

End clamp, width: 9.5 mm, color: gray



E/UK - End bracket

1201442

<https://www.phoenixcontact.com/us/products/1201442>

End bracket, Mounting on a DIN rail NS 32 or NS 35, material: PA, color: gray



FTRV 4-FE /BKYE - Potential distributors

3270185

<https://www.phoenixcontact.com/us/products/3270185>



E/UK 1 - End bracket

1201413

<https://www.phoenixcontact.com/us/products/1201413>



End clamps, for supporting the ends of double-level and three-level terminal blocks, width: 10 mm, color: gray

MPS-MT - Test plug

0201744

<https://www.phoenixcontact.com/us/products/0201744>



Test plug, with solder connection up to 1 mm² conductor cross section, number of positions: 1, color: gray

FTRV 4-FE /BKYE - Potential distributors



3270185

<https://www.phoenixcontact.com/us/products/3270185>

MPS-IH WH - Insulating sleeve

0201663

<https://www.phoenixcontact.com/us/products/0201663>

Insulating sleeve, color: white



MPS-IH RD - Insulating sleeve

0201676

<https://www.phoenixcontact.com/us/products/0201676>

Insulating sleeve, color: red



FTRV 4-FE /BKYE - Potential distributors



3270185

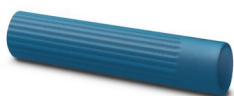
<https://www.phoenixcontact.com/us/products/3270185>

MPS-IH BU - Insulating sleeve

0201689

<https://www.phoenixcontact.com/us/products/0201689>

Insulating sleeve, color: blue



MPS-IH YE - Insulating sleeve

0201692

<https://www.phoenixcontact.com/us/products/0201692>

Insulating sleeve, color: yellow



FTRV 4-FE /BKYE - Potential distributors



3270185

<https://www.phoenixcontact.com/us/products/3270185>

MPS-IH GN - Insulating sleeve

0201702

<https://www.phoenixcontact.com/us/products/0201702>

Insulating sleeve, color: green



MPS-IH GY - Insulating sleeve

0201728

<https://www.phoenixcontact.com/us/products/0201728>

Insulating sleeve, color: gray



FTRV 4-FE /BKYE - Potential distributors



3270185

<https://www.phoenixcontact.com/us/products/3270185>

MPS-IH BK - Insulating sleeve

0201731

<https://www.phoenixcontact.com/us/products/0201731>

Insulating sleeve, color: black



Phoenix Contact 2024 © - all rights reserved

<https://www.phoenixcontact.com>

Phoenix Contact USA
586 Fulling Mill Road
Middletown, PA 17057, United States
(+717) 944-1300
info@phoenixcon.com