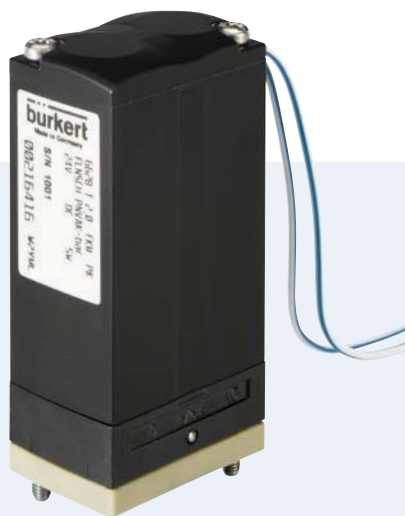




6628



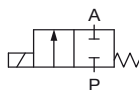
2/2- and 3/2-way Rocker Solenoid Valve

- 22 mm ultra compact design with orifices upto DN 3.0
- Isolating diaphragm for high chemical resistance
- Circuit function NC, NO and 3-way universal
- Back pressure tightness via rocker principle
- Minimal internal volume with excellent cleanability

Direct acting medium separated 2/2- and 3/2-way Rocker Solenoid Valve for control of aggressive fluids and gases in analytical medical applications, the food industry, and also the chemical industry for dosing, filling, mixing and distribution.

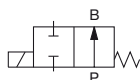
The medium is in contact with fluid housing and seal material solely through the isolating diaphragm. This valve with the new TwinPower-actuator, robust screw-in connection and 22 mm installation width, will fulfil the highest requirements. The established rocker solenoid technology is characterized through full back pressure tightness, good rinsing capability and low internal volume. Type 6628 is available in different technical versions and by virtue of several body options, it offers a perfect adaptation in fluid applications.

Circuit function A



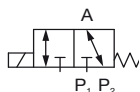
2/2-way valve,
direct acting,
normally closed

Circuit function B



2/2-way valve,
direct acting,
normally open

Circuit function T

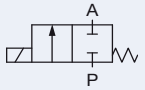
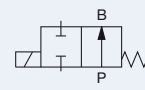
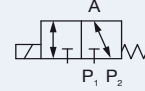


3/2-way valve,
direct acting,
universal function

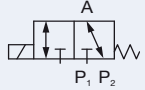
Other circuit functions on request.

Technical Data	
Orifice	DN 2.0 or 3.0 mm
Body material	PEEK or PPS (PVDF, PP on request)
Seal material	FFKM, FKM or EPDM
Medium	Resistant to neutral and aggressive gases and liquids acc. to our chemical resistance chart
Medium temperature	
FKM	0 to +55 °C
FFKM	+10 to +55 °C
EPDM	-10 to +55 °C
Ambient temperature	
FKM	0 to +55 °C
FFKM	+10 to +55 °C
EPDM	-10 to +55 °C
Internal volume	approx. 200 µl
Viscosity	max. ca. 21 mm ² /s
Port connection	<ul style="list-style-type: none"> ▪ Bürkert-Flange (22 x 35 mm) ▪ G 1/8 ▪ NPT 1/8 ▪ Barbed hose connector 4 mm (5/32") ▪ Push-in connector (tube's external diameter 6mm)
Electrical connection	<ul style="list-style-type: none"> ▪ PFA single flying leads, 0,5mm², 500mm ▪ Rectangular plug for cable plug Type 2505 ▪ Industry plug acc. to DIN 43650 Form B for cable plug Type 2507 on request ▪ circular connector M8 on request
Power supply	12 V DC, 24 V DC Other voltages on request
Voltage tolerance	±10%
Power consumption	5 W
Duty cycle	100 % continuous operation
Installation	As required, preferably with actuator upright
Protection class	IP 54 (IP40 with rectangular plug Type 2505)
Response times	Measurement at valve output with 2 bar and 20 °C acc. to DIN ISO 12238:2001
opening	25 ms (pressure build-up 0-10%)
closing	25 ms (pressure build-up 100-90%)
Manual override	on request

Ordering chart

Circuit function	Orifice [mm]	Port connection	Kv value water [m ³ /h]	Q ₁₀ value air [l/min]	Pressure range [bar]	Max. pressure difference [bar]	Seal material	Body material	Electrical connection	Voltage/Frequency [V/Hz]	Item no.		
 <p>2/2-way valve, direct acting, NC</p>	2	Bürkert-Flange	0.1	110	Vac-5	5	EPDM	PPS	Rectangular plug	24/DC	250 857		
									Flying leads, 500 mm	12/DC	251 614		
	3		Rectangular plug	0.17	180	Vac-3		3	PPS	241 727			
										Flying leads, 500mm	242 030		
			Hose connector	G 1/8	0.17	180		Vac-3	3	PEEK	Plug top	24/DC	251 643
											Flying leads, 500 mm	251 613	
	2	Bürkert-Flange	0.1	110	Vac-5	5	FKM	PPS	236 170	251 644			
									Flying leads, 500 mm	251 618			
	3	Rectangular plug	0.17	180	Vac-3	3	FKM	PPS	251 620				
									Flying leads, 500 mm	12/DC	246 382		
		Hose connector	G 1/8	0.17	180	Vac-3	3	PEEK	Rectangular plug	24/DC	248 017		
									Flying leads, 500mm	251 624			
									Plug top	238 616			
									Flying leads, 500 mm	251 628			
	2	Bürkert-Flange	0.1	110	Vac-5	5	FFKM	PPS	242 340	238 615			
									Flying leads, 500mm	251 650			
3	Hose connector	G 1/8	0.17	180	Vac-3	FFKM	PEEK	235 315	234 350				
								Rectangular plug	12/DC	235 316			
3	Push-in connection	G 1/8	0.17	180	Vac-3	FFKM	PEEK	Flying leads, 500 mm	24/DC	235 317			
								Flying leads, 500 mm	230 304				
3	G 1/8	G 1/8	0.17	180	Vac-3	FFKM	PEEK	235 318	235 319				
								235 319					
 <p>2/2-way valve, direct acting, normally open</p>	3	Bürkert-Flange	0.17	180	Vac-3	3	FFKM	PEEK	Flying leads, 500 mm	24/DC	251 686		
 <p>3/2-way valve, direct acting, Universal version</p>	2	Bürkert-Flange	0.1	110	Vac-5	5	EPDM	PPS	Rectangular plug	24/DC	250 859		
									Flying leads, 500 mm	12/DC	241 889		
	3		Rectangular plug	0.17	180	Vac-2		2	PPS	241 726			
										Flying leads, 500mm	251 616		
			Hose connector	G 1/8	0.17	180		Vac-2	2	PEEK	245 256		
											Plug top	24/DC	251 645
	2	Bürkert-Flange	0.1	110	Vac-5	5	FKM	PPS	Flying leads, 500 mm	24/DC	251 617		
									Plug top	245 205			
	3	Rectangular plug	0.17	180	Vac-2	2	FKM	PPS	251 647				
									Flying leads, 500 mm	12/DC	251 629		
		Hose connector	G 1/8	0.17	180	Vac-2	2	PEEK	251 630				
									Rectangular plug	251 633			
									Flying leads, 500mm	251 634			
									Plug top	24/DC	251 635		
	2	Bürkert-Flange	0.17	180	Vac-2	2	PEEK	PPS	Flying leads, 500 mm	24/DC	251 684		
									Plug top	251 637			
3	Hose connector	G 1/8	0.17	180	Vac-2	FFKM	PEEK	Flying leads, 500 mm	24/DC	251 638			
								Plug top	251 649				
3	Push-in connection	G 1/8	0.17	180	Vac-2	FFKM	PPS	Flying leads, 500mm	24/DC	251 685			
								Flying leads, 500mm	251 685				

Ordering chart, continued

Circuit function	Orifice [mm]	Port connection	Kv value water [m³/h]	Q _{yn} value air [l/min]	Pressure range [bar]	Max. pressure difference [bar]	Seal material	Body material	Electrical connection	Voltage/Frequency [V/Hz]	Item no.
T  3/2-way valve, direct acting, Universal version	2	Bürkert-Flange	0.1	110	Vac-5	5	FFKM	PEEK	Rectangular plug	24/DC	235 320
									Flying leads, 500 mm		12/DC
									Rectangular plug	24/DC	235 321
	Hose connector G 1/8	0.17	180	Vac-2	2	FFKM	PEEK	Flying leads, 500 mm	235 322		
								230 305			
								235 323			
235 325											

- Kv-value water [m³/h] max. flow rate for water measured at +20° C, 1 bar pressure to atmosphere
- Rectangular plug types delivered without plug (see ordering chart for accessories)

i Further versions on request



Electrical connection

Cable plug connection acc. to Form B (industrial standard)
Flying leads





Material


Other Body and Seal materials on request

Ordering chart for accessories

Rectangular plug Type 2505

	Accessories	Item no.
	Rectangular cable plug Type 2505 with 3 m cable	133 486
	Rectangular cable plug Type 2505 with 300 mm flying leads	644 068

Cable Plug Type 2507 according to Industrial standard Form B

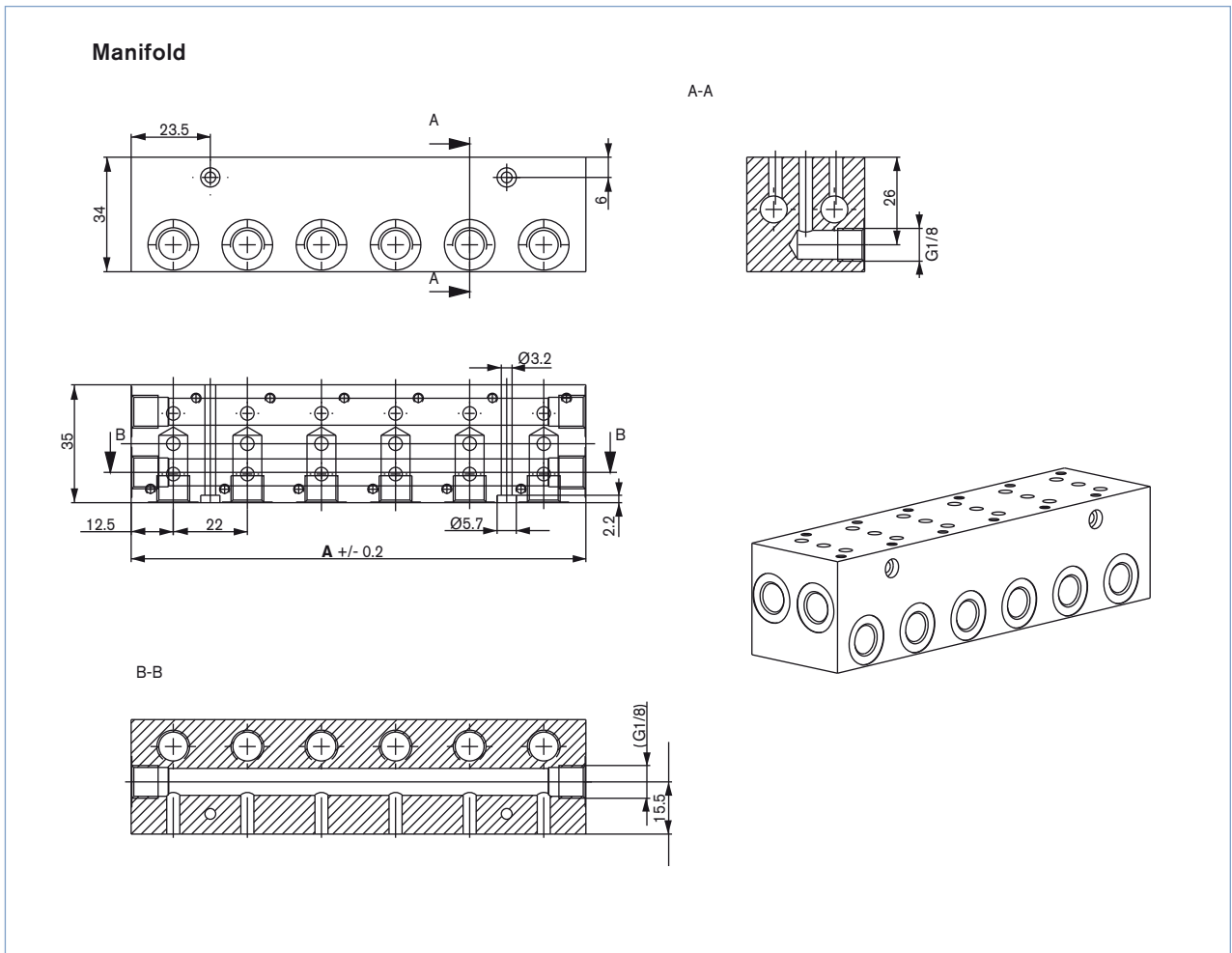
	Accessories	Version	Voltage	Item no.
	Cable Plug Type 2507	without Circuitry	0 ... 250 V AC/DC	423 845
		with LED	24 V AC/DC	423 849

Ordering chart for manifold

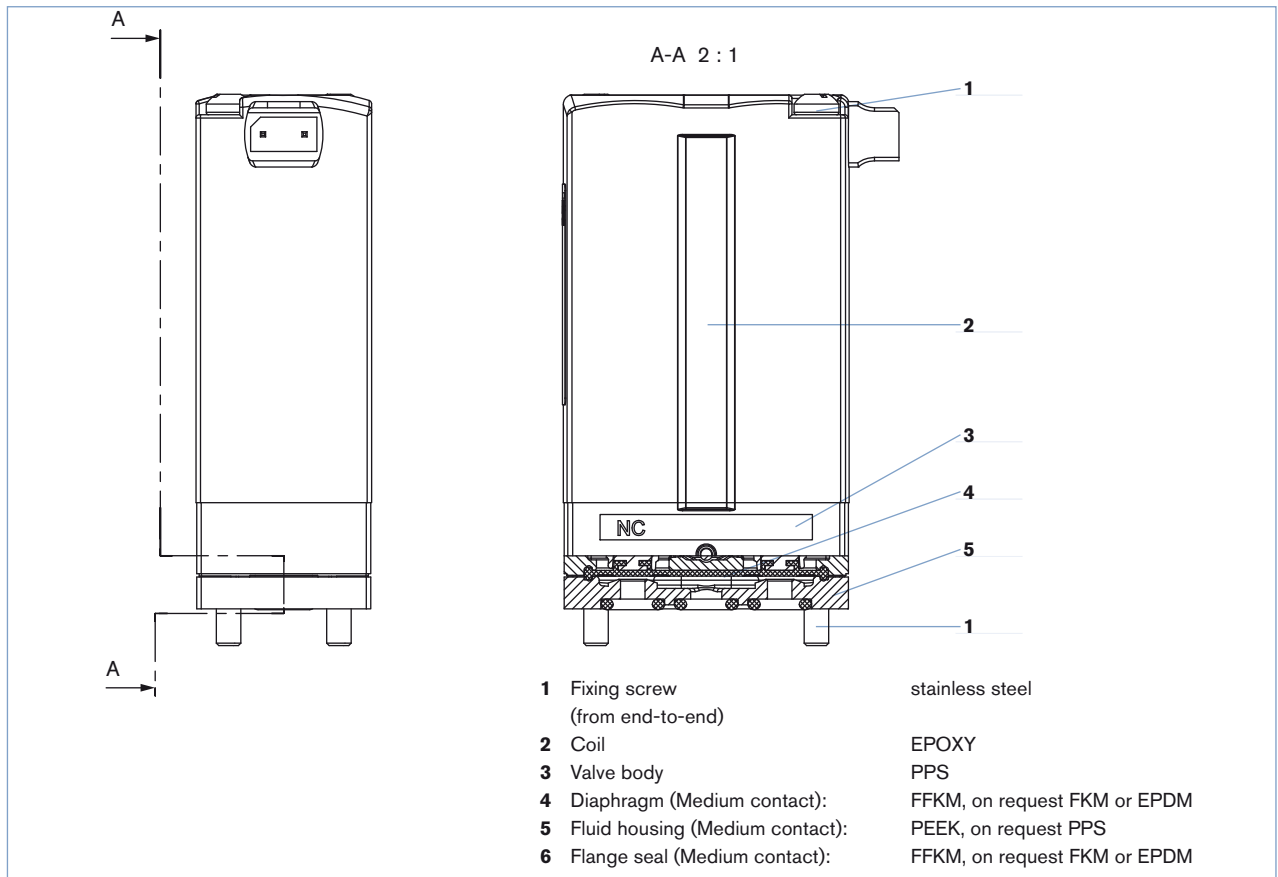
Multiple Manifolds with individual service port (G1/8) and diverter function on 2 common channels (G1/8);
Delivery without valves; Material: anodized aluminium

Manifold	A [mm]	Item no.
2-fold	47	669 571
3-fold	69	672 633
4-fold	91	669 572
5-fold	113	672 661
6-fold	135	669 570
10-fold	223	672 660

▪ Other versions on request.



Materials



Application examples

Flying leads valve with plug-in coupling



Rectangular plug with hose connector



Flying leads valve with threaded body



Rectangular plug with manual override and flange

