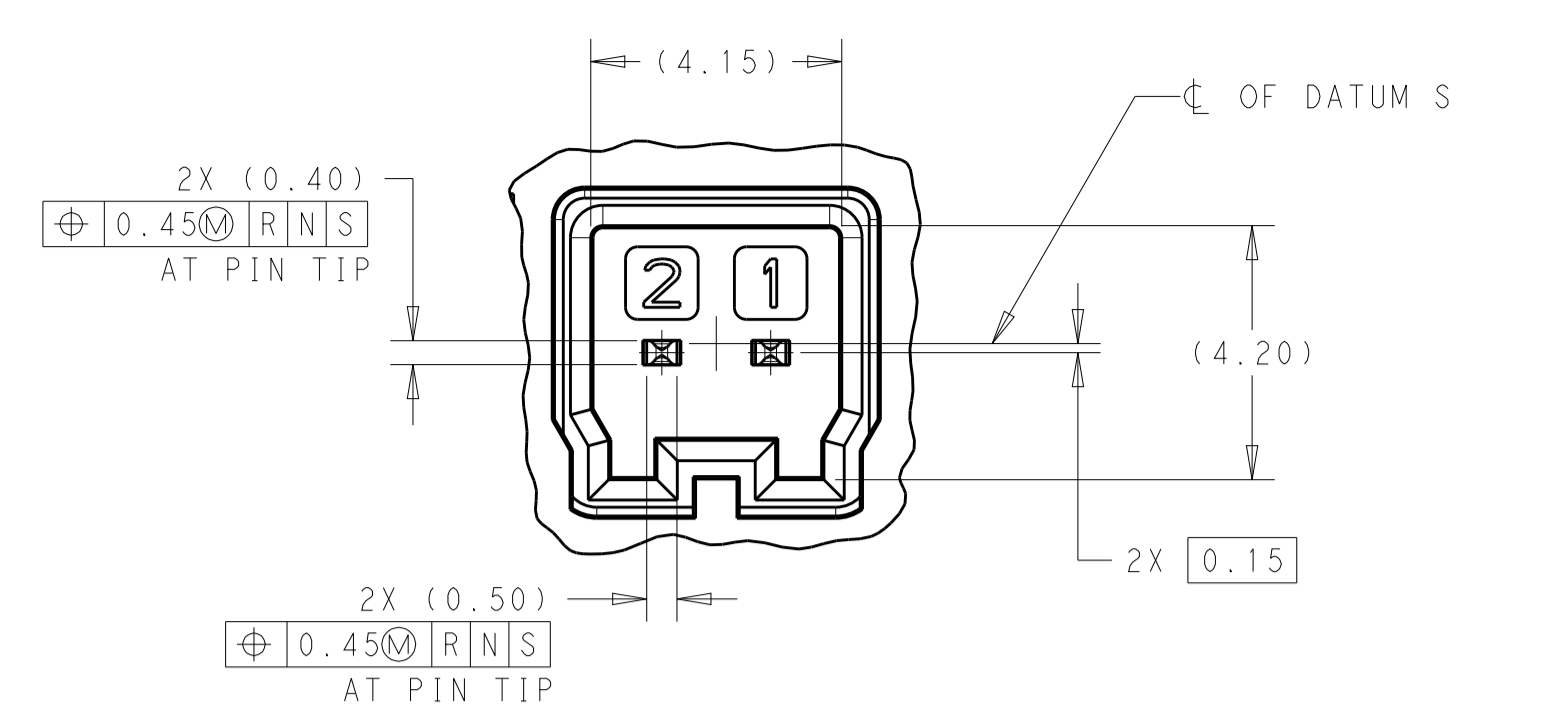
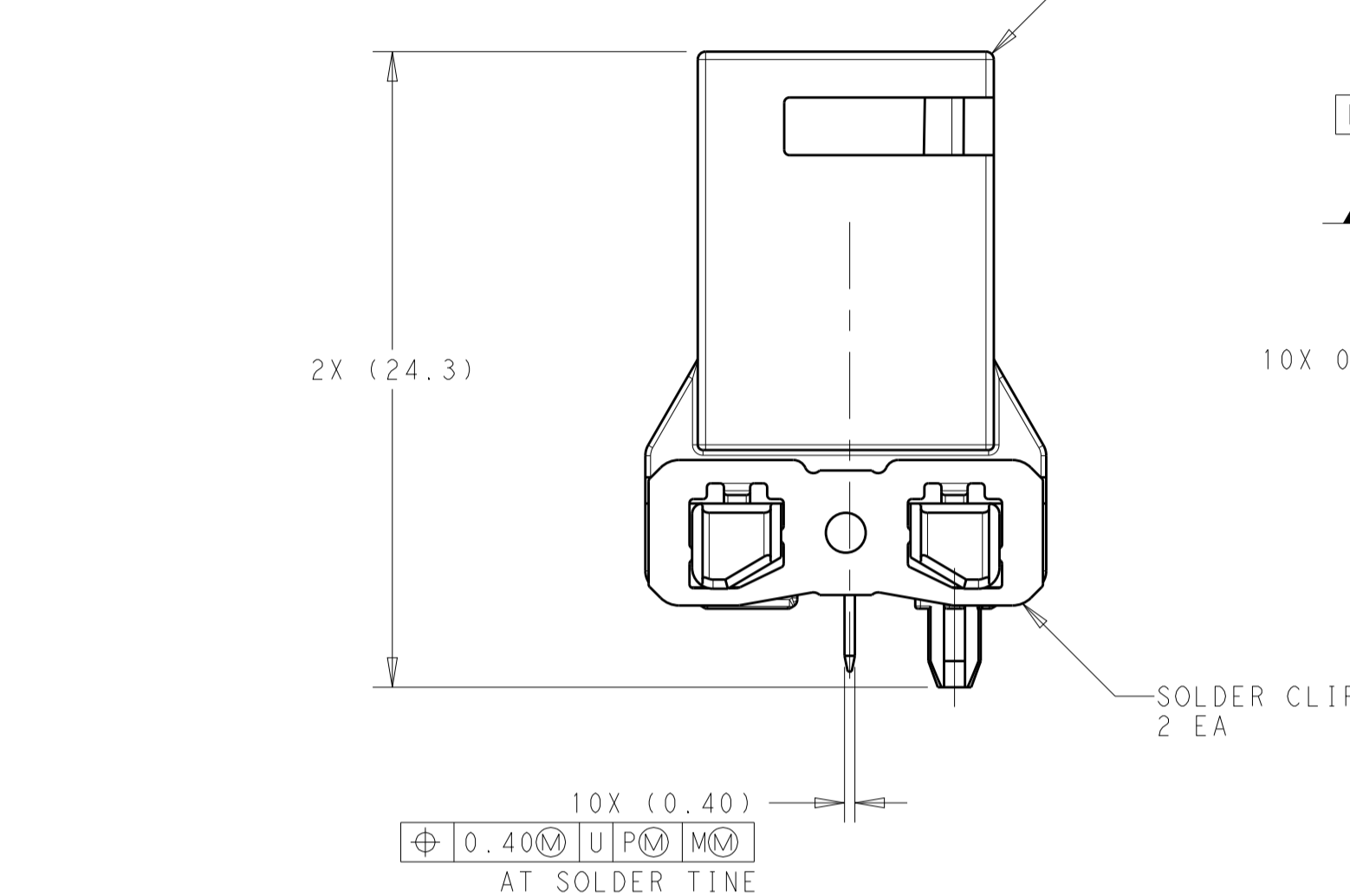


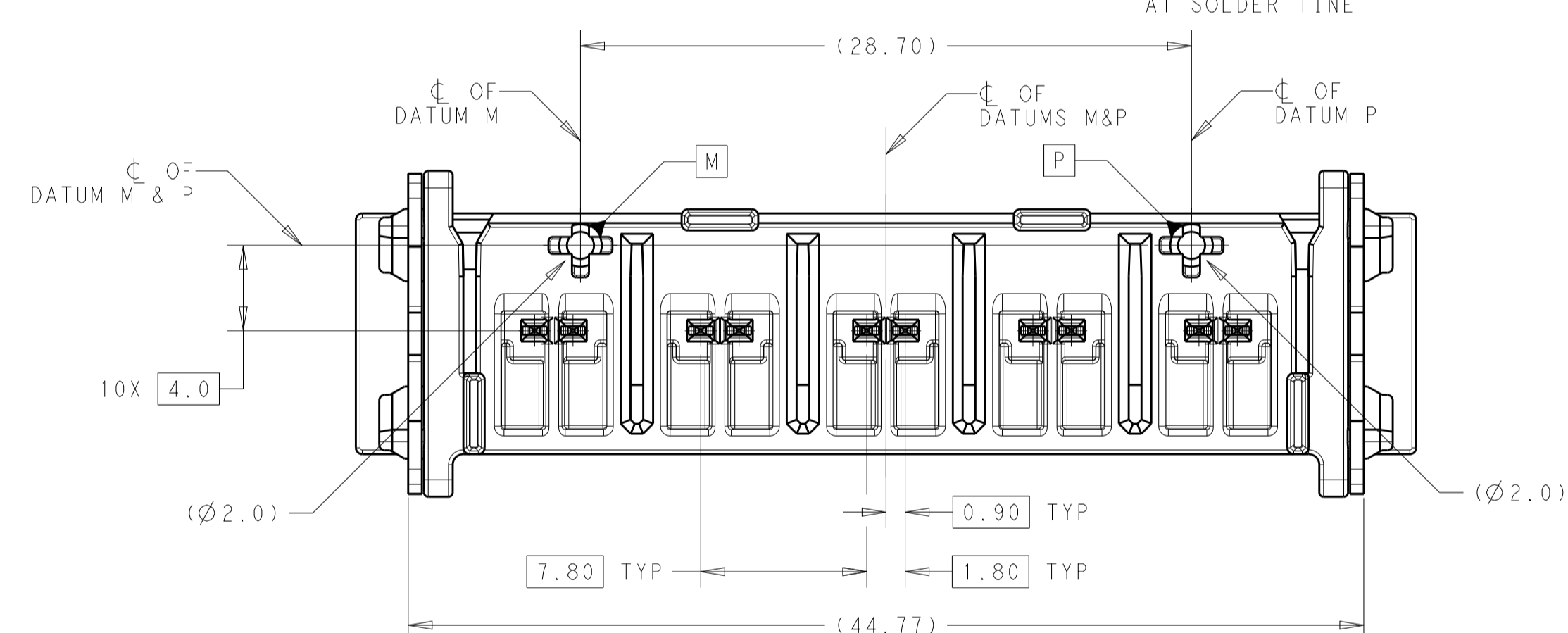
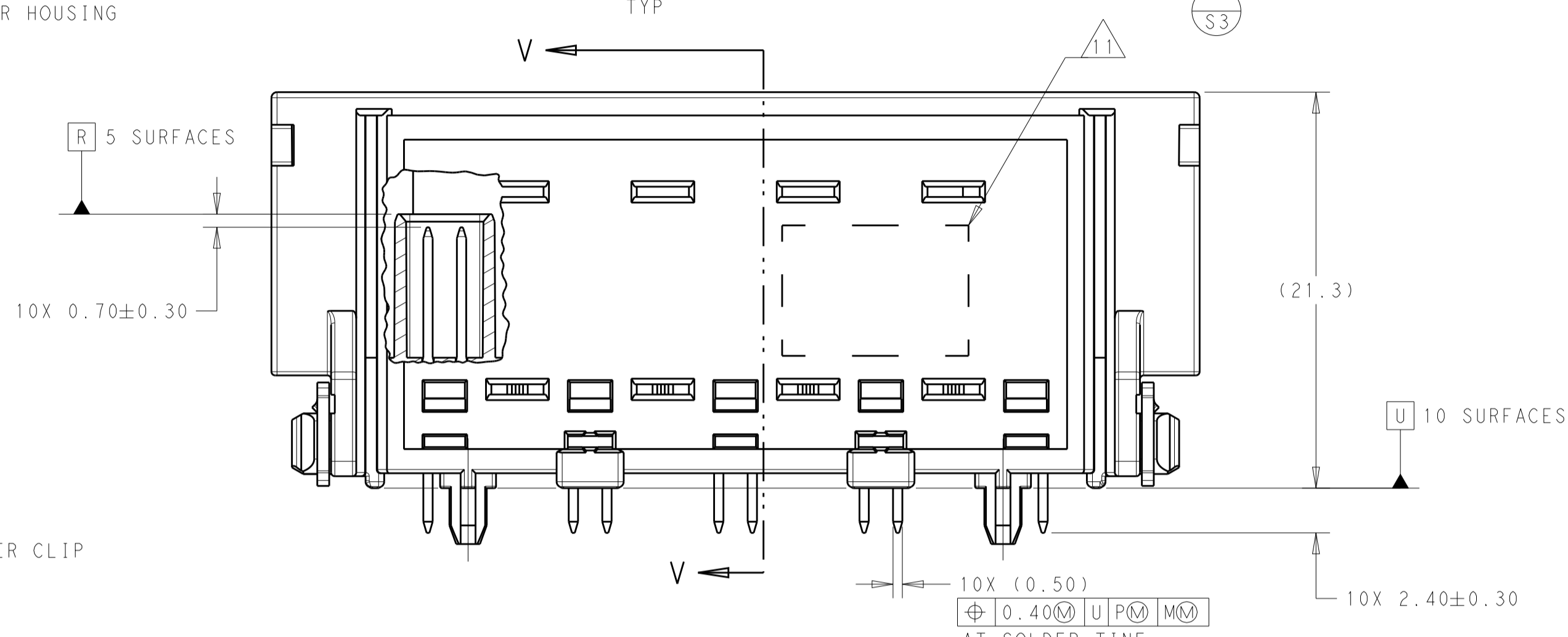
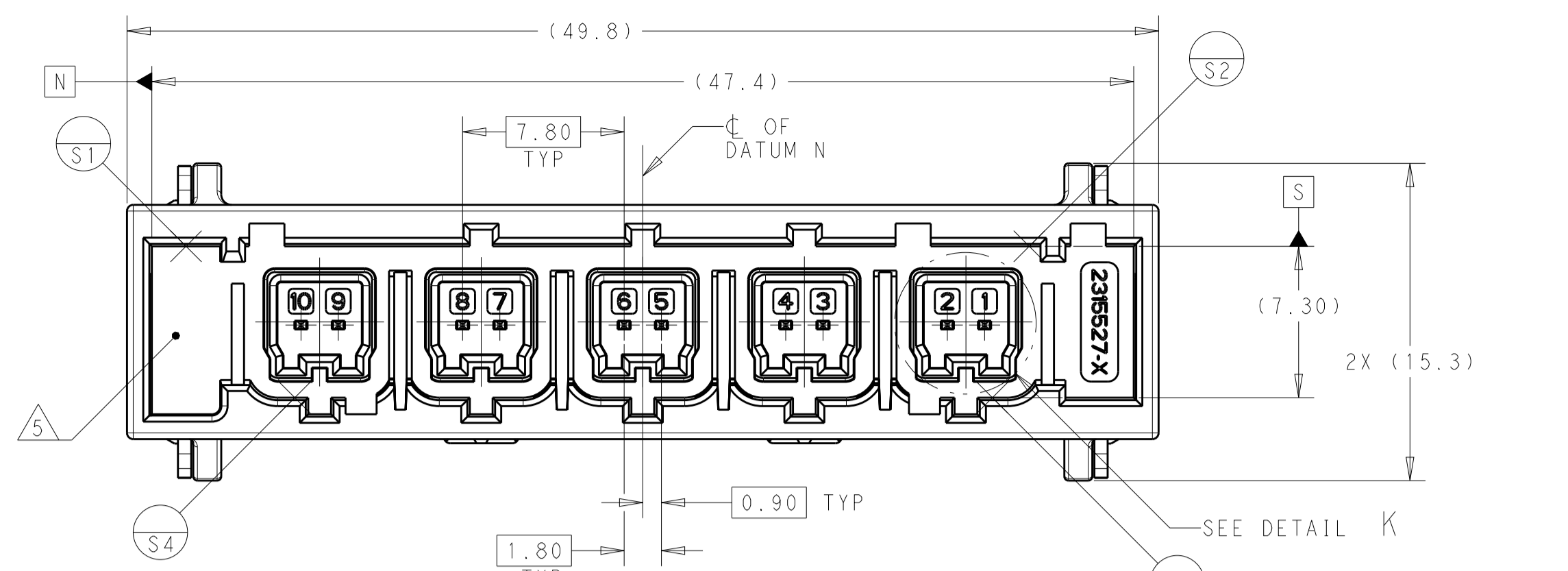
REVISIONS					
P.	LTM	DESCRIPTION	DATE	OWN	APVD
C2		REVISED PER ECO-20-013671	28SEP2020	DJH	DJH
C3		REVISED PER ECO-20-017813	16DEC2020	DJH	DJH



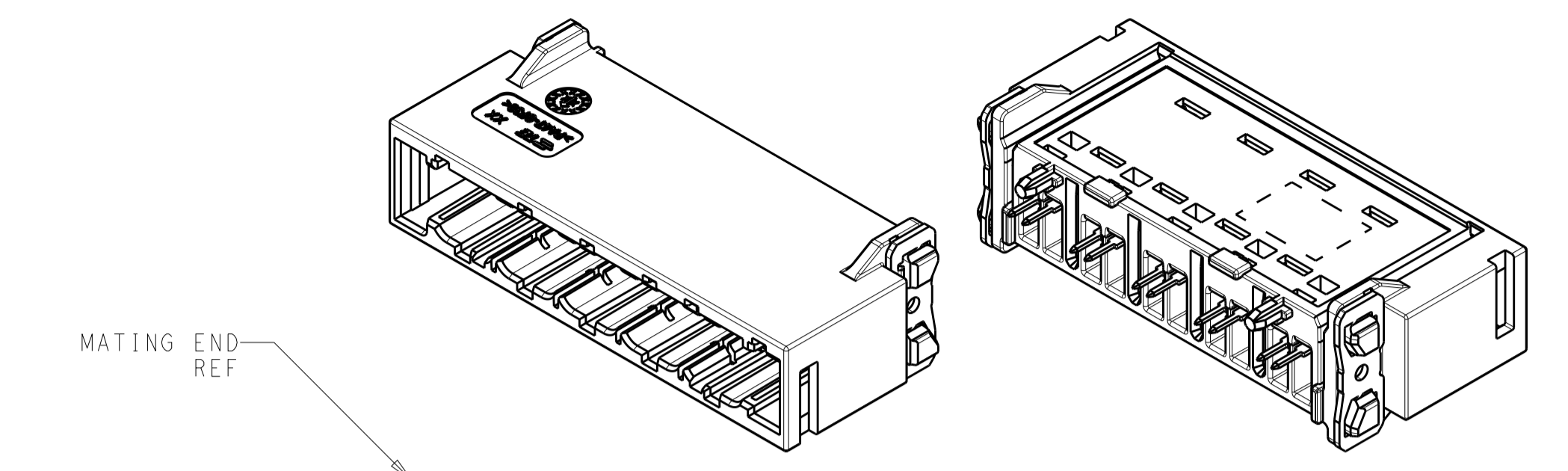
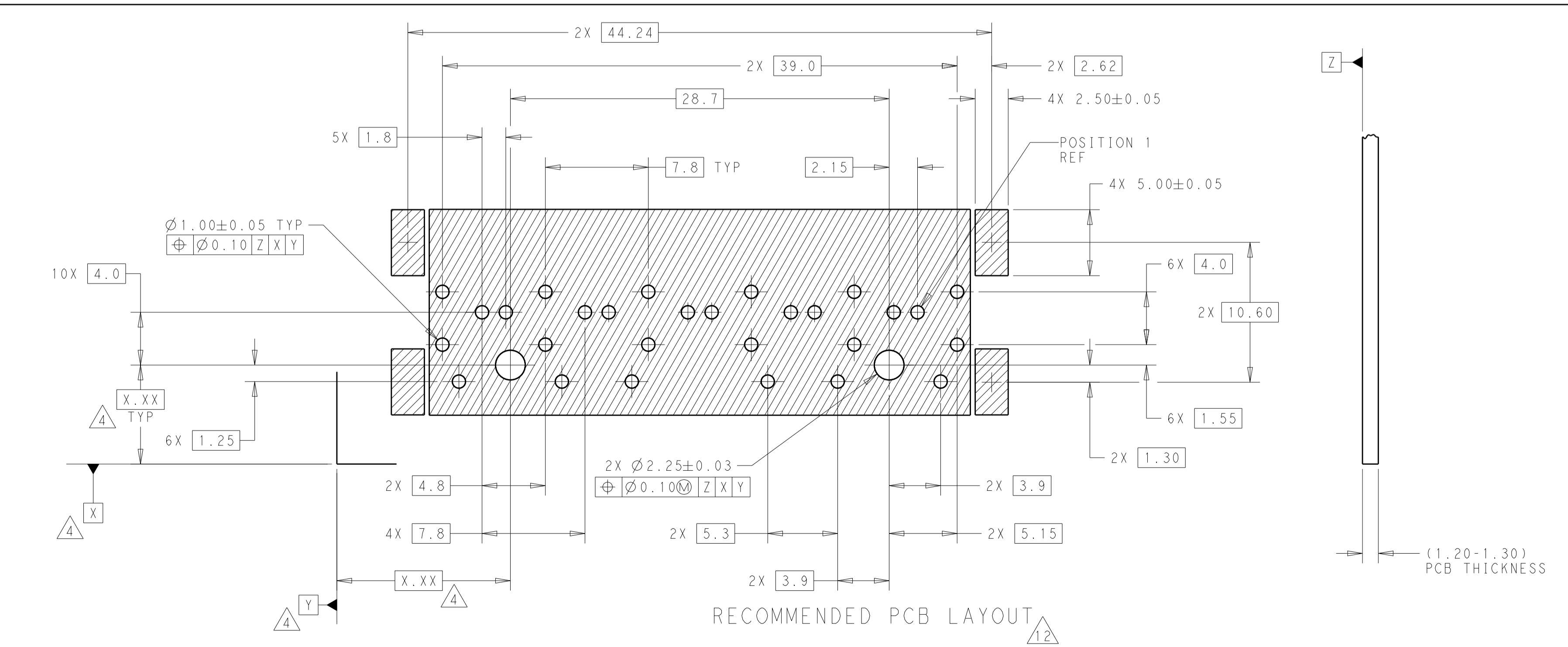
DETAIL K
SCALE 8:1
5 PLC INDIVIDUALLY



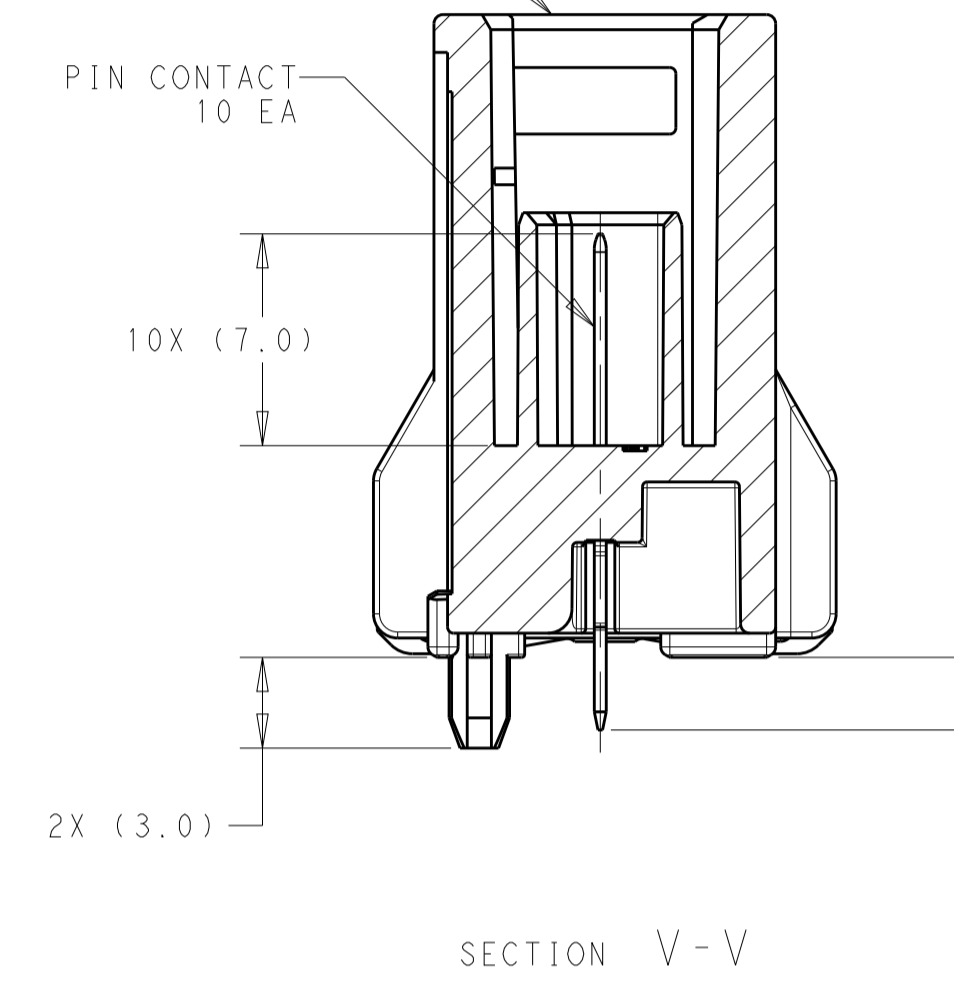
2315530-1 AS SHOWN



RECOMMENDED PCB LAYOUT



ISOMETRIC VIEWS
SCALE 2:1



SECTION V-V

- 1. HEADER HOUSING - NYLON, COLOR: SEE TABLE, 30% GLASS FILLED. PIN CONTACTS - COPPER ALLOY. BLADE AND SIDE SHIELDS - PHOSPHOR BRONZE. SOLDER CLIPS - BRASS.
- 2. PIN CONTACTS - PRE-PLATED 0.1µm MIN TIN. BLADE AND SIDE SHIELDS - 3.0µm MIN TIN IN LOCALIZED TIN PLATE AREA ALL OVER 2.0µm MIN NICKEL. SOLDER CLIPS - 3.8µm MIN TIN OVER 1.27µm MIN NICKEL.
- 3. PRESS OUT FORCE FOR PIN CONTACTS >15N WITH FEED RATE 25mm/min.
- 4. DATUMS AND BASIC DIMENSIONS ESTABLISHED BY CUSTOMER.
- 5. INTERFACE PER 208-160014-11, MATEnet 5-PORT HEADER VARIANT 1; WITHOUT ELECTRICAL CONNECTION OF WIRE SHIELDING. REQUIRED FOR 100 Mbit/s DATA TRANSMISSION RATES.
- 6. INTERFACE PER 208-160014-12, MATEnet 5-PORT HEADER VARIANT 2; WITH ELECTRICAL CONNECTION OF WIRE SHIELDING. REQUIRED FOR 1 Gbit/s DATA TRANSMISSION RATES.
- 7. PACKAGING: EXTRUDED TUBE.
- 8. TOLERANCES ACCORDING TO DIN EN ISO 8015, DIN EN ISO 14405-1. GENERAL TOLERANCES ACCORDING TO DIN 16742 TG5, EXCEPT ANGLE DIMENSIONS (SEE TITLE BLOCK).
- 9. SOLDERING PROCESS: LEAD-FREE REFLOW SOLDERING IN REFERENCE TO JEDEC J-STD-020D.
- 10. HEADER ASSEMBLY FULFILLS RF-REQUIREMENTS UP TO 1GHz ACCORDING TO 108-94509.
- 11. ASSEMBLY DATE CODE, ASSEMBLY PART NUMBER AND ASSEMBLY REVISION MARKED IN THIS APPROXIMATE LOCATION.
- 12. PC BOARD COPPER LAYER ACCORDING TO 114-94448 IS MANDATORY.
- 13. PRELIMINARY - NOT RELEASED FOR PRODUCTION.

PER SHEET 2 (SHIELDED)	NO	YES	PER DETAIL Z	WATER BLUE	Z	1-2315530-9	13
			PER DETAIL J	BEIGE	J	1-2315530-7	13
			PER DETAIL C	LIGHT BLUE	C	1-2315530-3	13
			PER DETAIL B	PURE WHITE	B	1-2315530-2	13
PER SHEET 1 (UNSHIELDED)	YES	NO	PER DETAIL A	BLACK	A	1-2315530-1	13
			PER DETAIL Z	WATER BLUE	Z	2315530-9	13
			PER DETAIL J	BEIGE	J	2315530-7	13
			PER DETAIL C	LIGHT BLUE	C	2315530-3	13
CONFIGURATION	SOLDER CLIPS	BLADE/SIDE SHIELDS	KEYING	HEADER HOUSING COLOR	CODING	PART NUMBER	

THIS DRAWING IS A CONTROLLED DOCUMENT.

OWN: J. HARDY 01MAR2017
CHK: G. CHALAS 01MAR2017
APVD: J. W. HALL 02MAR2017

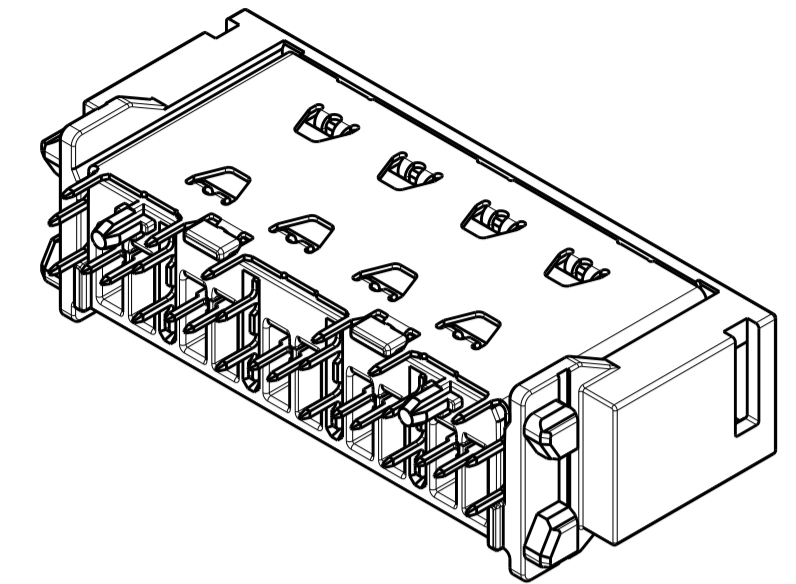
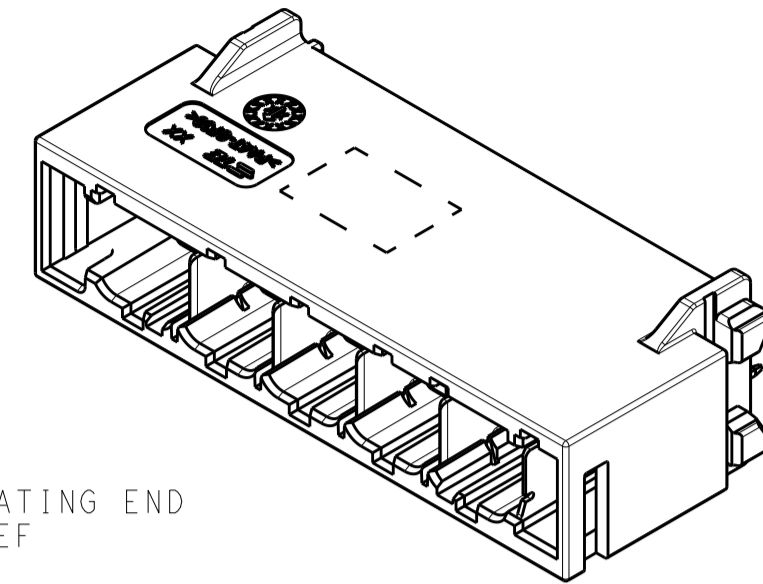
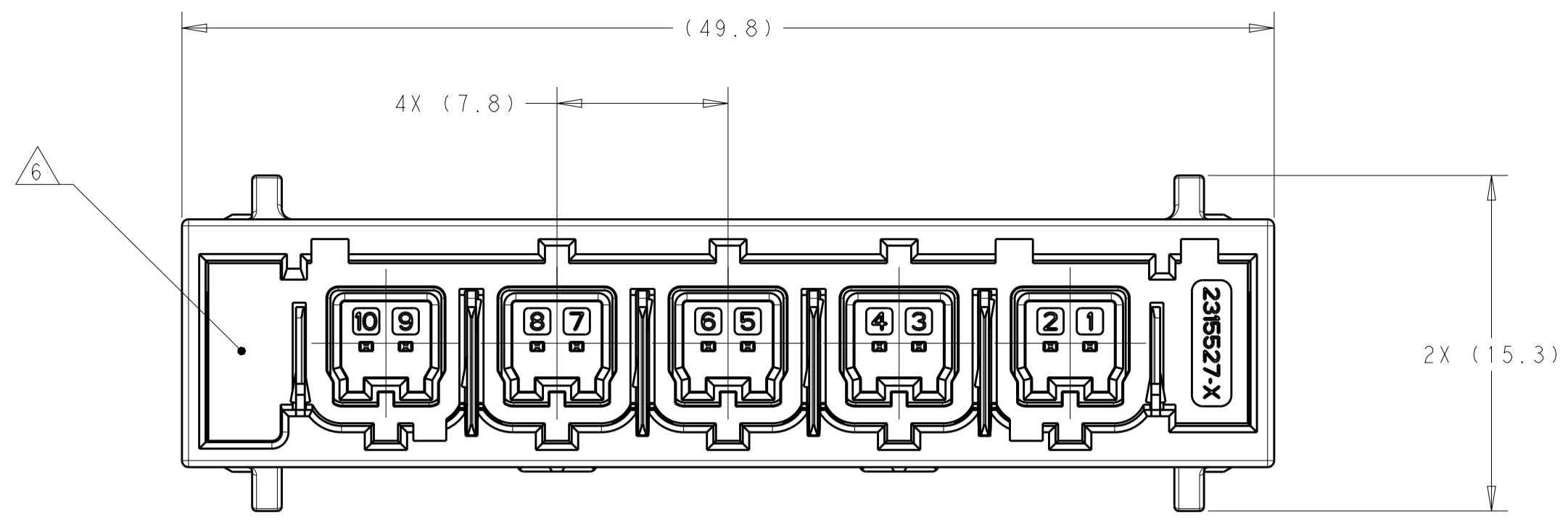
TE Connectivity

NAME: HEADER ASSEMBLY, 1x5-PORT, VERTICAL, MATEnet

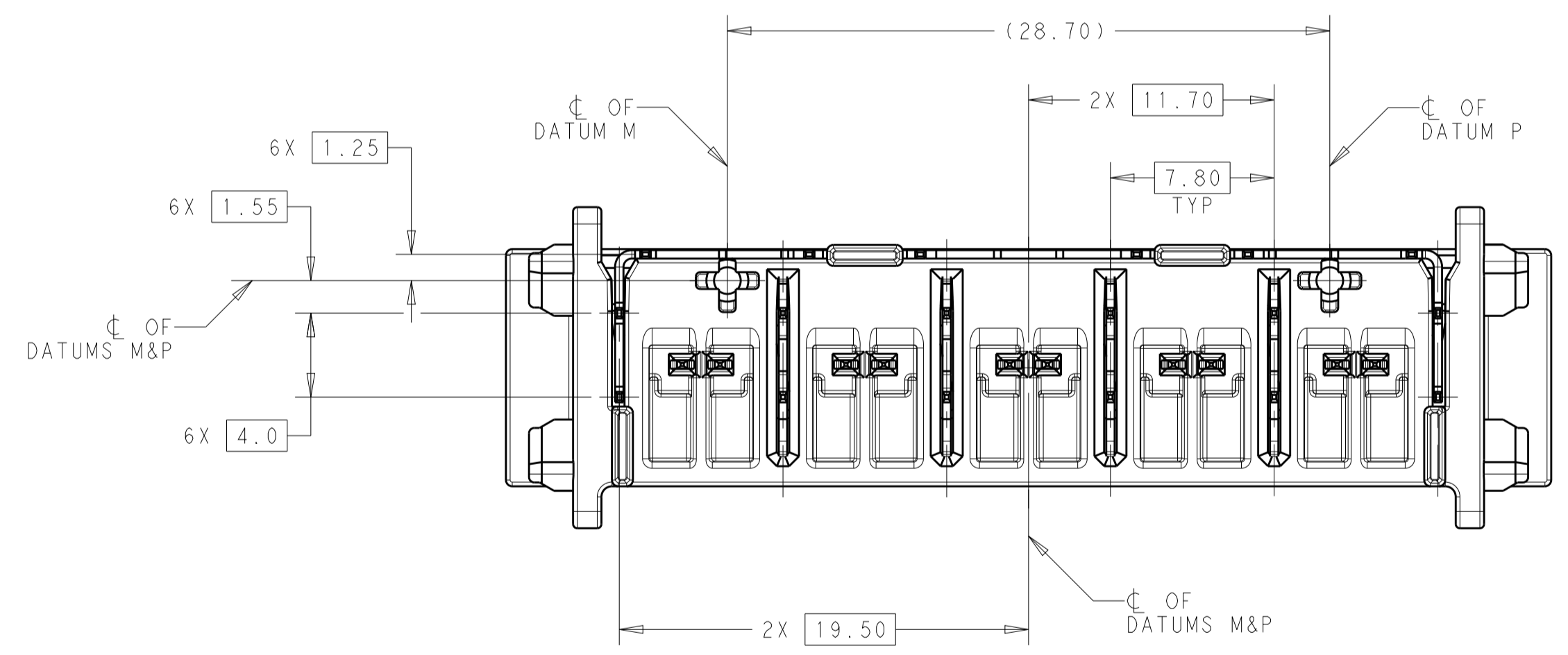
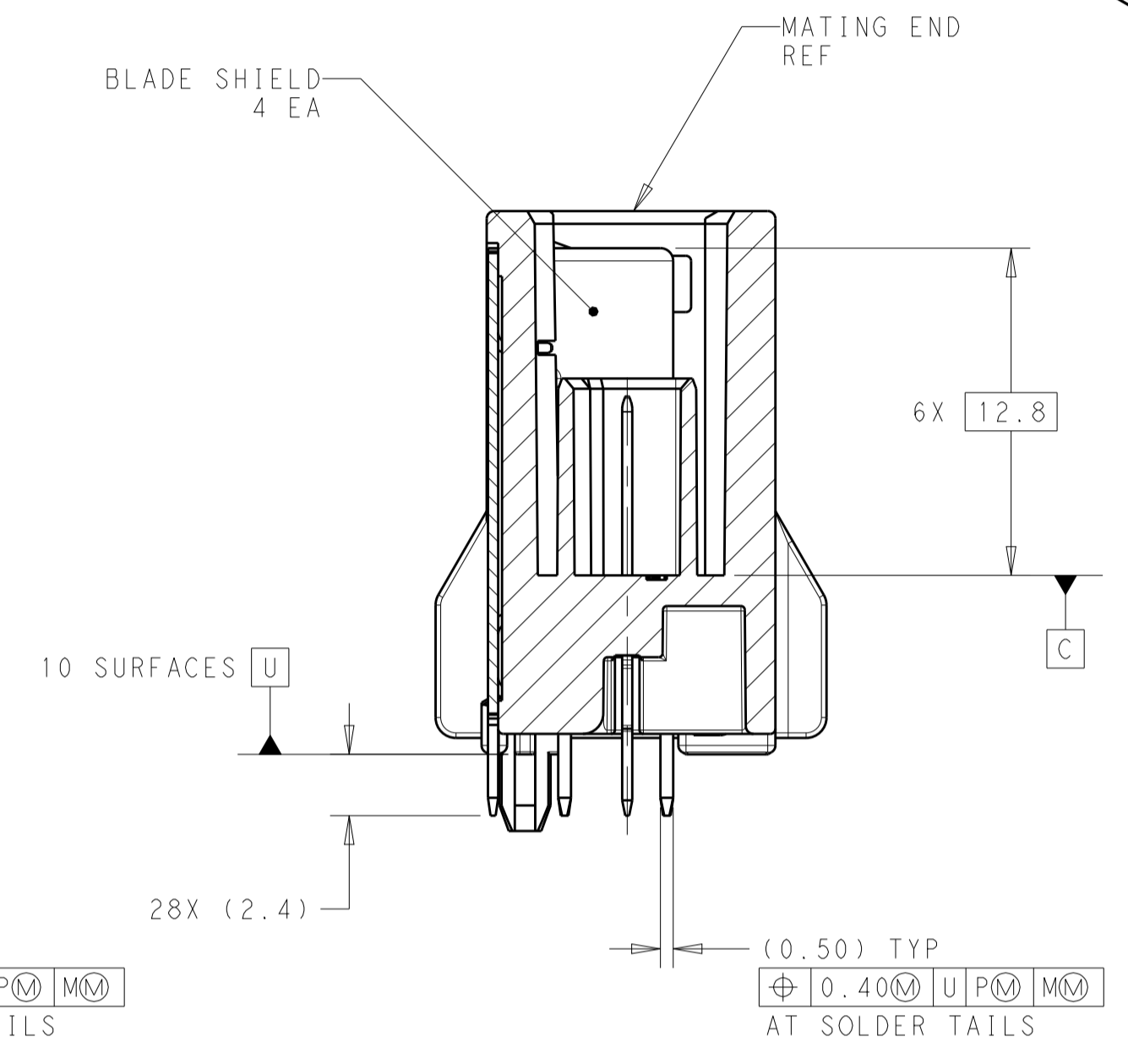
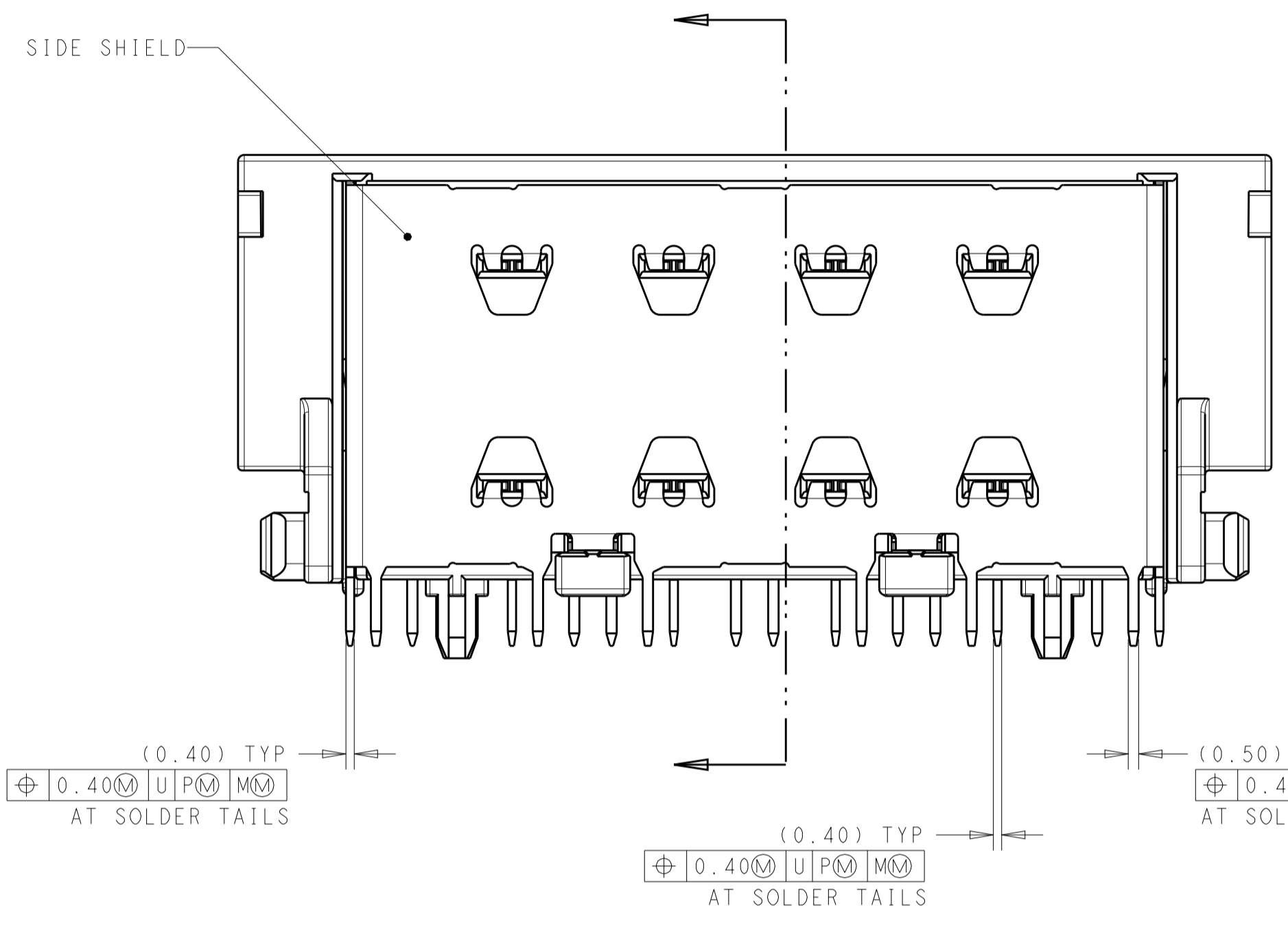
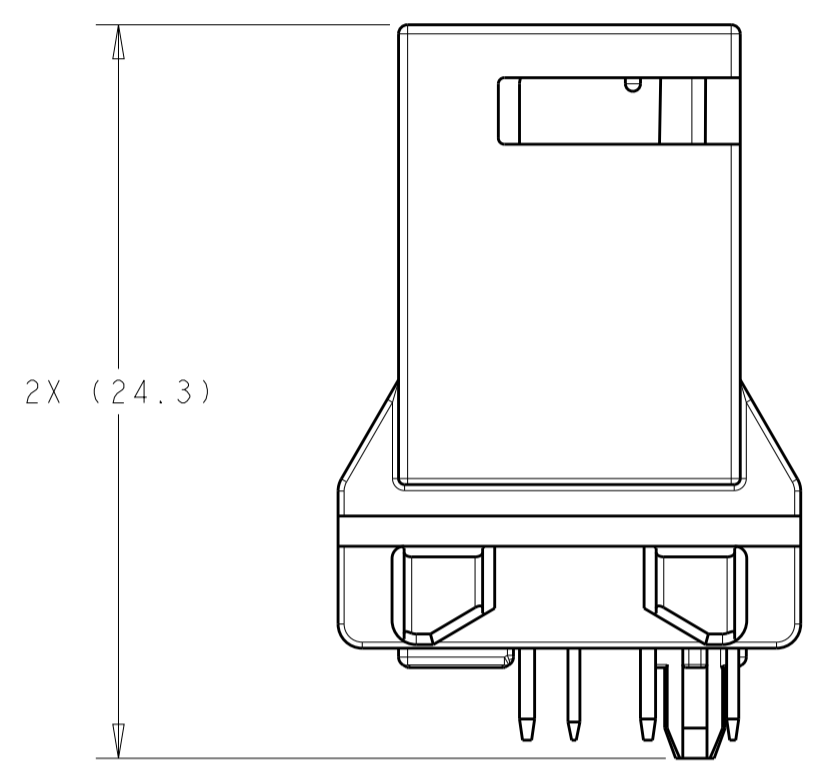
PRODUCT SPEC: 108-94568
APPLICATION SPEC: 114-94448

SIZE: A1
SCALE: 4:1
SHEET: 1 OF 3
REV: C3

REVISIONS				
P.	LTN	DESCRIPTION	DATE	APVD
-	-	SEE SHEET 1	-	-



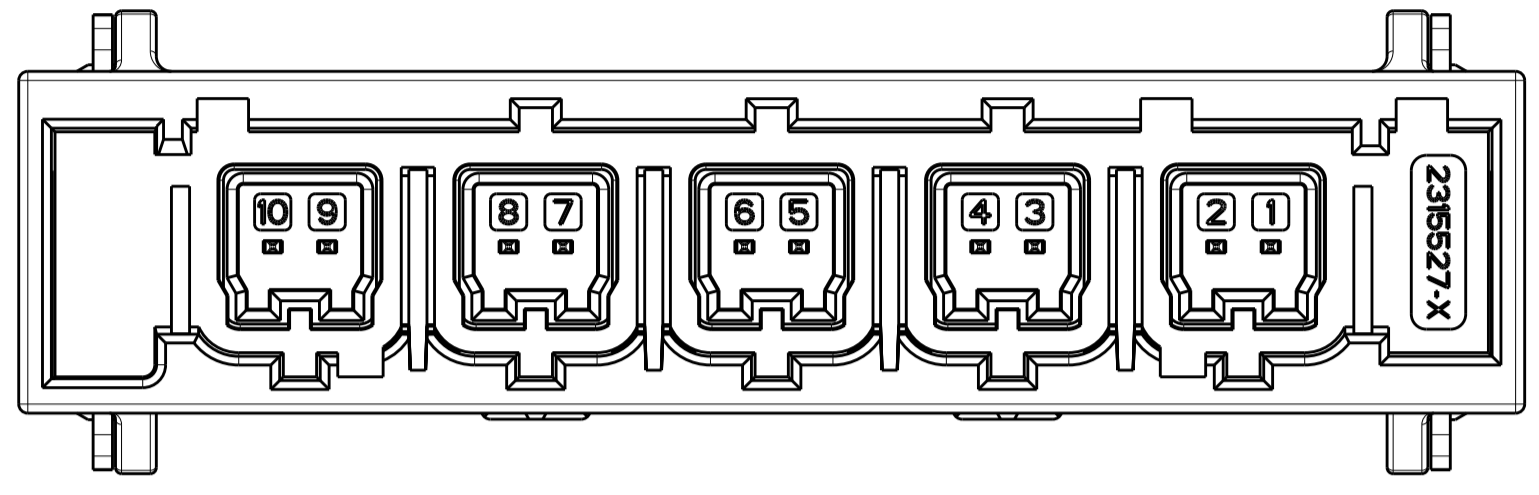
ISOMETRIC VIEWS
SCALE 2:1



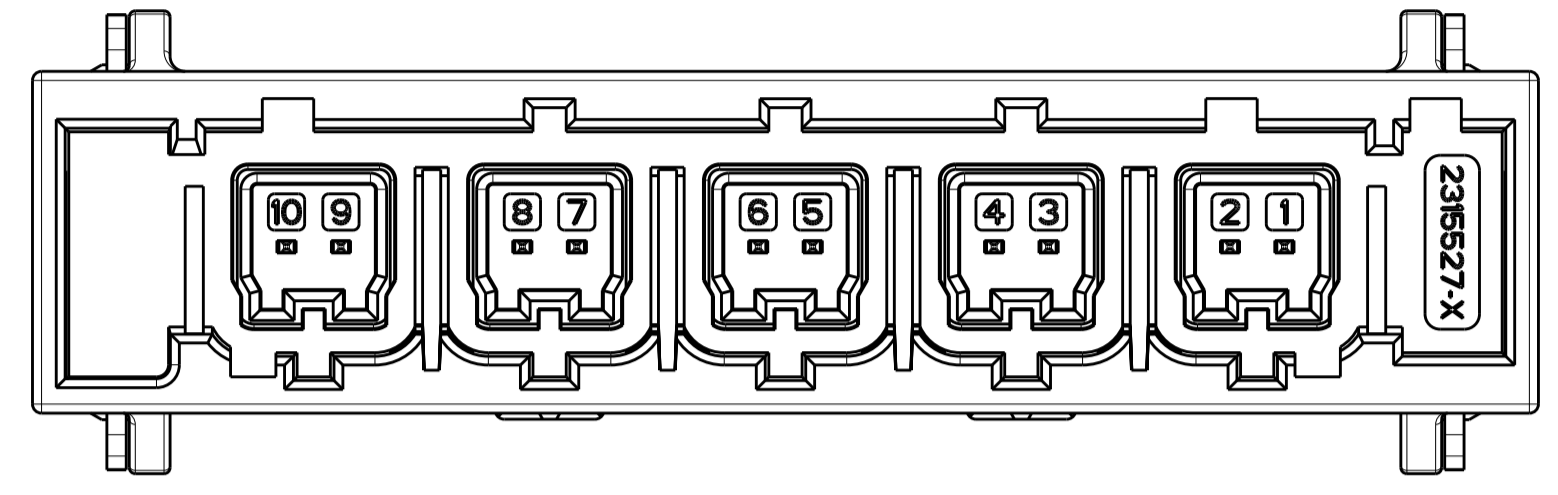
1-2315530-1 AS SHOWN

THIS DRAWING IS A CONTROLLED DOCUMENT.		OWN: D. J. HARDY 01MAR2017	TE Connectivity
DIMENSIONS: mm		CHK: G. CHALAS 01MAR2017	
TOLERANCES UNLESS OTHERWISE SPECIFIED:		APVD: J. W. HALL 02MAR2017	NAME: HEADER ASSEMBLY, 1x5-PORT, VERTICAL, MATEnet
0 PLC ±	1 PLC ±	PRODUCT SPEC	SIZE: A1
2 PLC ±	3 PLC ±	APPLICATION SPEC	CAGE CODE: -
4 PLC ±	ANGLES ±	114-94448	DRAWING NO: C=2315530
MATERIAL: -	FINISH: -	WEIGHT: -	RESTRICTED TO: -
CUSTOMER DRAWING		SCALE: 4:1	SHEET: 2 OF 3

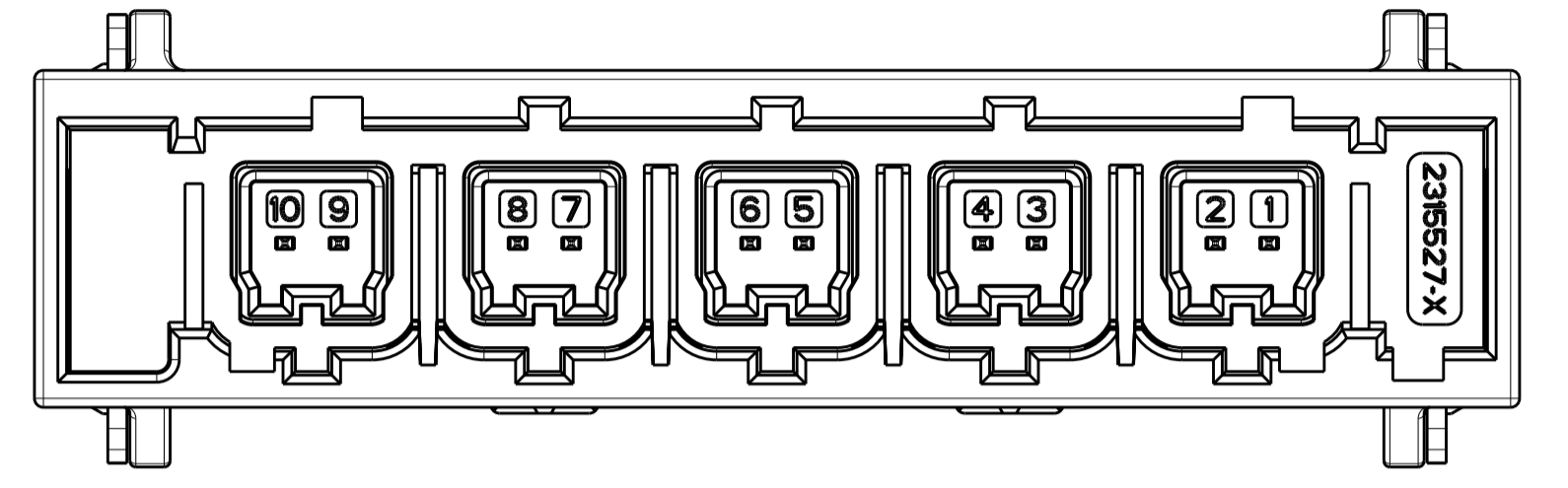
REVISIONS				
P.	LTN	DESCRIPTION	DATE	APVD
-	-	SEE SHEET 1	-	-



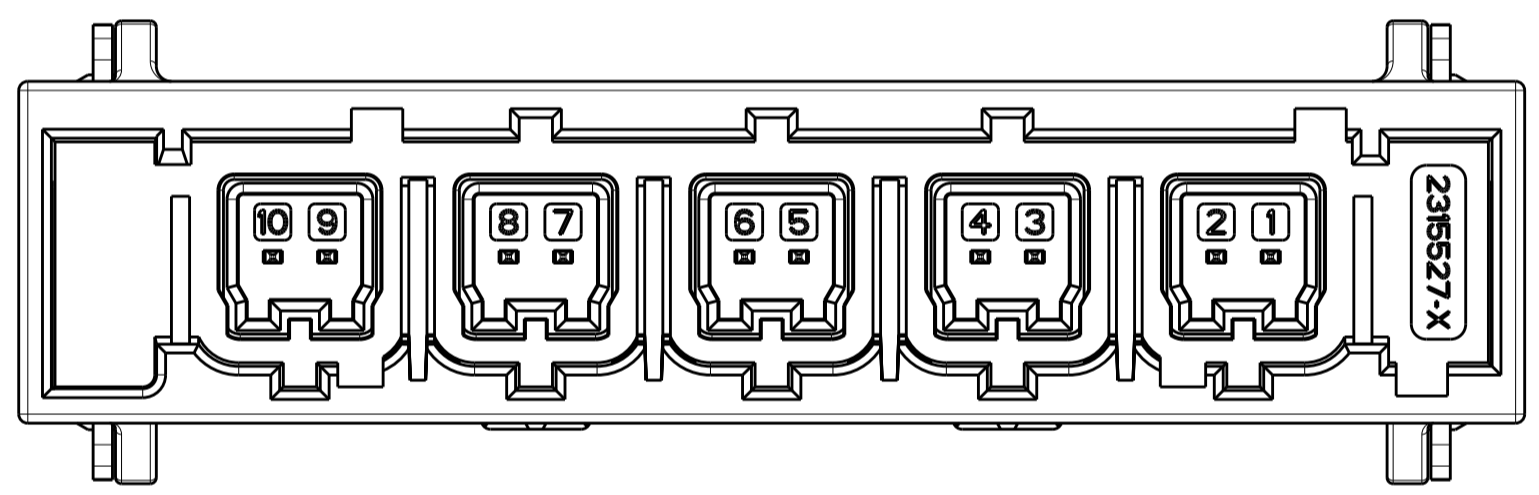
DETAIL A



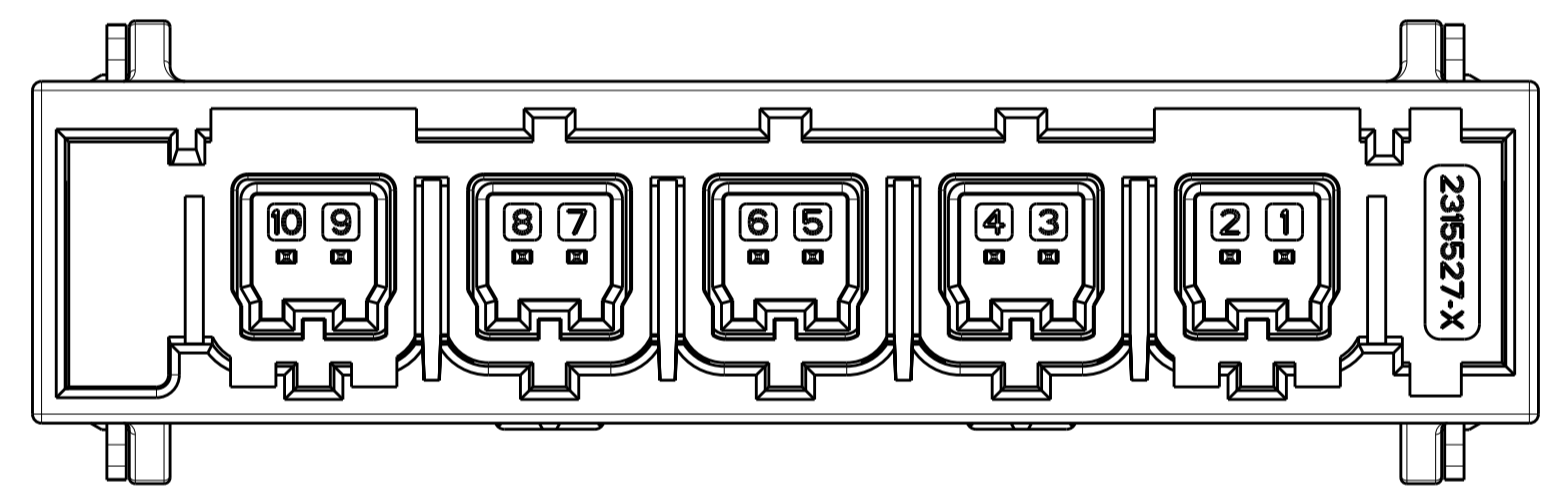
DETAIL B



DETAIL C



DETAIL J



DETAIL Z

THIS DRAWING IS A CONTROLLED DOCUMENT.		DWN: D. J. HARDY 01MAR2017 CHK: G. CHALAS 01MAR2017 APVD: J. W. HALL 02MAR2017	
DIMENSIONS: mm	TOLERANCES UNLESS OTHERWISE SPECIFIED: 0 PLC ± 1 PLC ± 2 PLC ± 3 PLC ± 4 PLC ± ANGLES ±1° FINISH	NAME: HEADER ASSEMBLY, 1x5-PORT, VERTICAL, MATEnet PRODUCT SPEC: APPLICATION SPEC: 114-94448 WEIGHT:	
MATERIAL: -		SIZE: A1 CAGE CODE: - DRAWING NO: 2315530 CUSTOMER DRAWING	RESTRICTED TO: - SCALE: 4:1 SHEET: 3 OF 3 REV: C.3