

NOTES:

1.  $\text{\textcircled{C}}$  REPRESENTS A CRITICAL DIMENSION.
2. MINIMUM PUSHOUT FORCE: .5 LB.
3. COPLANARITY: .004[0.10] = POS 05 THRU 26  
.006[0.15] = POS 27 THRU 50
4. TUBE ALL POSITIONS. PARTS TO BE TUBED WITH NOTCH GOING WITH ARROW.
5. PINS CAN BE ORIENTED IN ANY DIRECTION; BOTH ROWS MUST FACE SAME WAY.
6. SEE NOTCH FOR PROPER ORIENTATION.
7. MAXIMUM PIN HEIGHT VARIATION: .003[0.08].
8. DUE TO HIGH AMOUNT OF INSERTION FORCE NEEDED, THE -LC OPTION IS NOT COMPATIBLE WITH AUTO PLACEMENT. SAMTEC RECOMMENDS MANUAL PLACEMENT FOR ALL ASSEMBLIES WITH THE -LC OPTION.
9. MEASUREMENT TO BE TAKEN AT BEND.

SFC-1XX-XX-XX-D-XX

**NO. OF POSITIONS**  
ALL POSITIONS AVAILABLE  
-02 THRU -50

**LEAD STYLE**  
-T1: THROUGH HOLE  
(SEE FIG. 1, SHT. 1)  
-T2: SURFACE MOUNT  
(SEE FIG. 2, SHT. 2)

**OPTIONS**  
(LEAVE BLANK FOR STANDARD AND USE SFM-XX-D)  
-A: ALIGNMENT PIN (USE SFM-XX-D-A)  
(SEE FIG 4, SHT 2)  
-LC: LOCKING CLIP (SEE FIG 6, SHT 3 & NOTE 8)  
(USE SFM-XX-D-LC)  
-TR: TAPE & REEL (SEE SHT 3)  
-K: POLYIMIDE FILM PAD (.005[0.13] THICKNESS)  
(SEE FIG 3, SHT 2) (USE K-DOT-.157-.250-.005)

**BODY SPECIFICATION**  
-D: DOUBLE ROW

**PLATING SPECIFICATION**  
-F: 3 $\mu$ " FLASH SELECTIVE GOLD IN CONTACT AREA, MATTE TIN ON TAIL  
-L: 10 $\mu$ " LIGHT SELECTIVE GOLD IN CONTACT AREA, MATTE TIN ON TAIL  
-FM: 3 $\mu$ " FLASH SELECTIVE GOLD IN CONTACT AREA, MATTE TIN ON TAIL  
-LM: 10 $\mu$ " LIGHT SELECTIVE GOLD IN CONTACT AREA, MATTE TIN ON TAIL

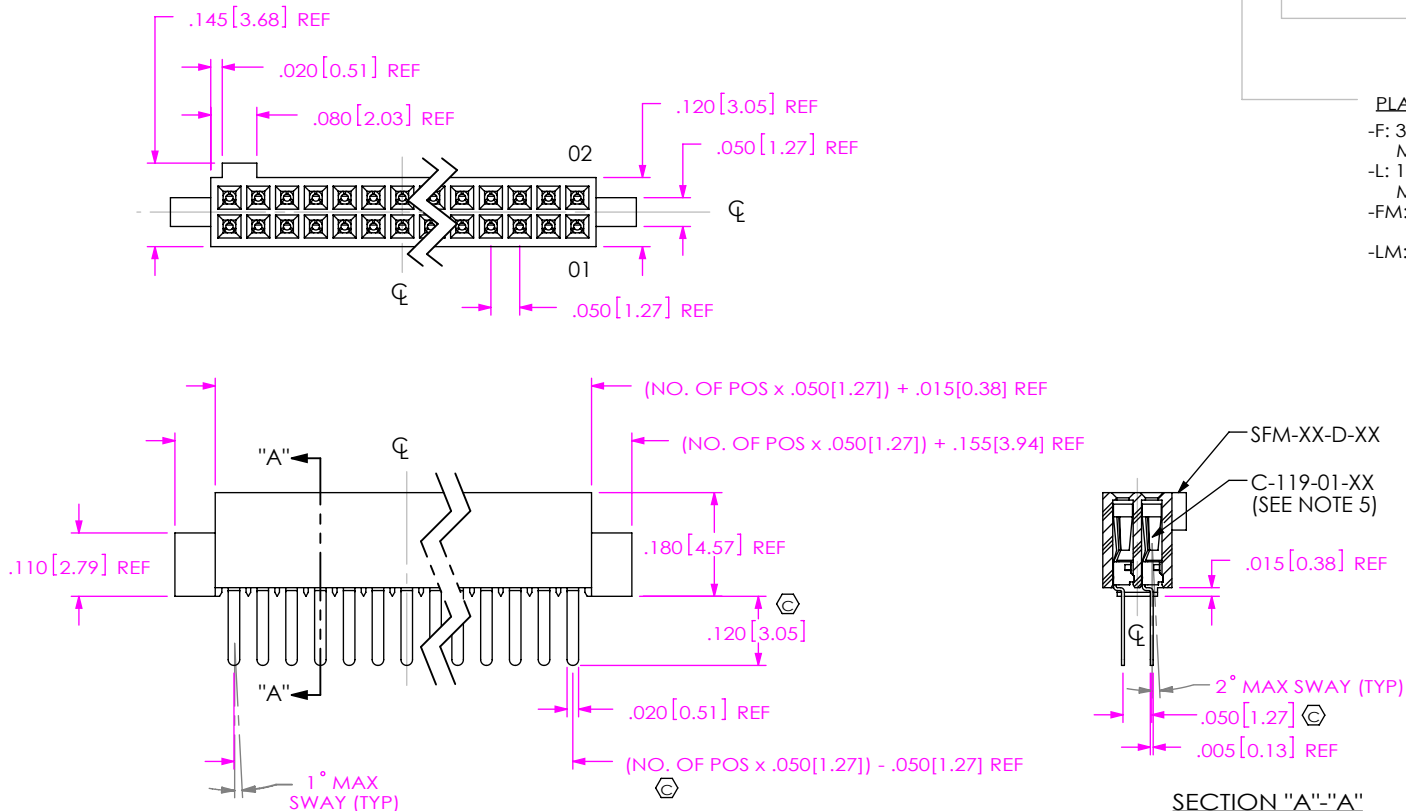


FIG 1  
THROUGH HOLE/STRAIGHT MODIFIED

UNLESS OTHERWISE SPECIFIED, DIMENSIONS ARE IN INCHES.  
TOLERANCES ARE:  
DECIMALS ANGLES  
.XX:  $\pm .01$  [ .3] 2°  
.XXX:  $\pm .005$  [ .13]  
.XXXX:  $\pm .0020$  [ .051]

**PROPRIETARY NOTE**  
\* THIS DOCUMENT CONTAINS CONFIDENTIAL AND PROPRIETARY INFORMATION AND ALL DESIGN, MANUFACTURING, REPRODUCTION, USE, PATENT RIGHTS AND SALES RIGHTS ARE EXPRESSLY RESERVED BY SAMTEC, INC. THIS DOCUMENT SHALL NOT BE DISCLOSED, IN WHOLE OR PART, TO ANY UNAUTHORIZED PERSON OR ENTITY NOR REPRODUCED, TRANSFERRED OR INCORPORATED IN ANY OTHER PROJECT IN ANY MANNER WITHOUT THE EXPRESS WRITTEN CONSENT OF SAMTEC, INC.



520 PARK EAST BLVD., NEW ALBANY, IN 47150  
PHONE: 812-944-6733 FAX: 812-948-5047  
e-Mail: info@SAMTEC.com code 55322

**MATERIAL:** DO NOT SCALE DRAWING SHEET SCALE: 3:1  
INSULATOR: LCP, COLOR: BLACK  
CONTACT: PHOSPHOR BRONZE

DESCRIPTION:  
.050 x .050 SOCKET STRIP DOUBLE ROW ASSEMBLY

DWG. NO.  
SFC-1XX-XX-XX-D-XX

BY: BRATCHER 5/25/01 SHEET 1 OF 3

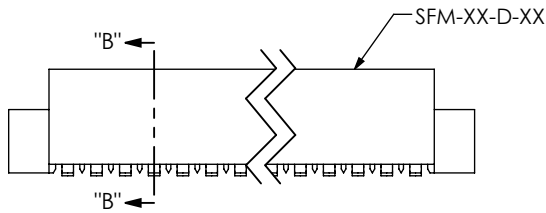
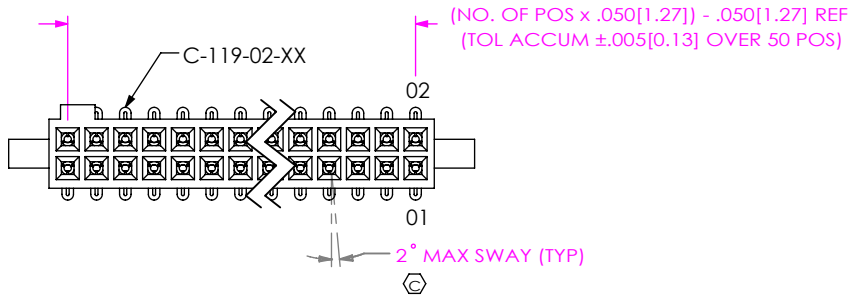
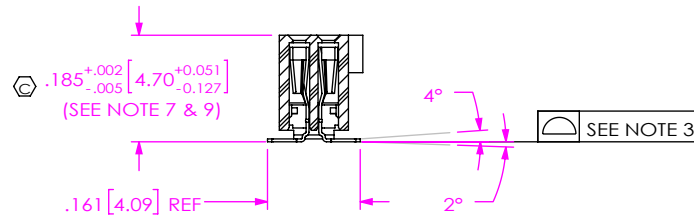
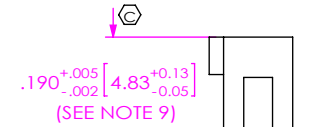


FIG 2  
-T2: SURFACE MOUNT  
(SAME AS FIG 1, DIFFERENT AS SHOWN)



SECTION "B"- "B"



IN-PROCESS  
-T2

FOR HAND FILL ONLY  
NOTE: DIMENSION APPLIES PRIOR TO RE-PRESS, SEE SECTION "B-B" FOR FINISHED DIMENSION

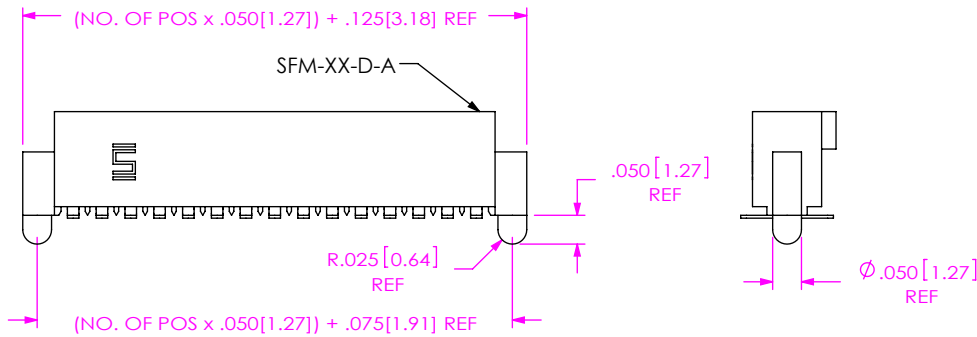


FIG 4  
-A: ALIGNMENT PIN  
(SAME AS FIG 2, DIFFERENT AS SHOWN)

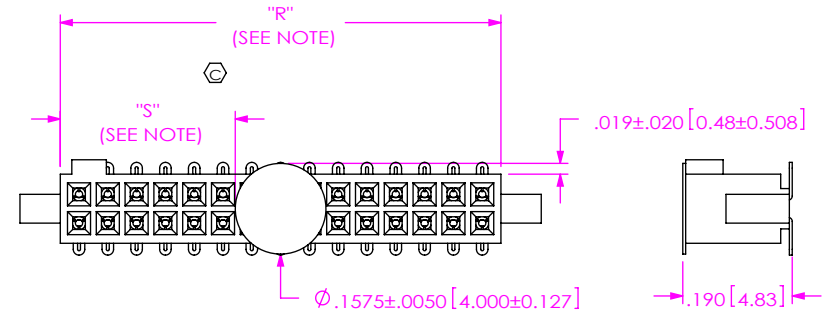


FIG 3  
-K: POLYIMIDE FILM PAD  
(SAME AS FIG 2, DIFFERENT AS SHOWN)  
NOTE: "R" = USED MEASURED DIMENSION REF  
"S" = {("R" - .1575[4.000])/2}±.020[0.51]

PROPRIETARY NOTE

THIS DOCUMENT CONTAINS CONFIDENTIAL AND PROPRIETARY INFORMATION AND ALL DESIGN, MANUFACTURING, REPRODUCTION, USE, PATENT RIGHTS AND SALES RIGHTS ARE EXPRESSLY RESERVED BY SAMTEC, INC. THIS DOCUMENT SHALL NOT BE DISCLOSED, IN WHOLE OR PART, TO ANY UNAUTHORIZED PERSON OR ENTITY NOR REPRODUCED, TRANSFERRED OR INCORPORATED IN ANY OTHER PROJECT IN ANY MANNER WITHOUT THE EXPRESS WRITTEN CONSENT OF SAMTEC, INC.



520 PARK EAST BLVD, NEW ALBANY, IN 47150  
PHONE: 812-944-6733 FAX: 812-948-5047  
e-Mail info@SAMTEC.com code 55322

DO NOT SCALE DRAWING

SHEET SCALE: 3:1

DESCRIPTION:  
.050 x .050 SOCKET STRIP DOUBLE ROW ASSEMBLY

DWG. NO.

SFC-1XX-XX-XX-D-XX

BY: BRATCHER 5/25/01

SHEET 2 OF 3

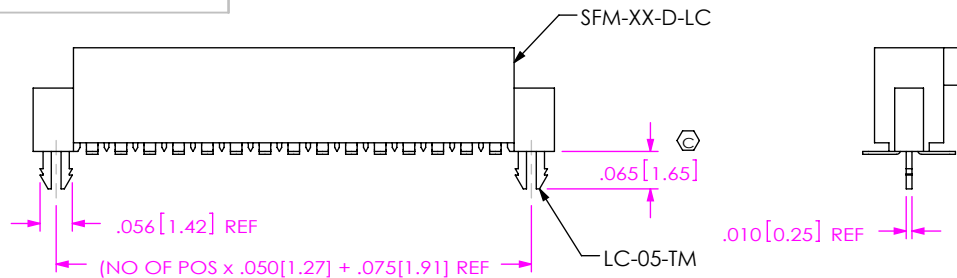
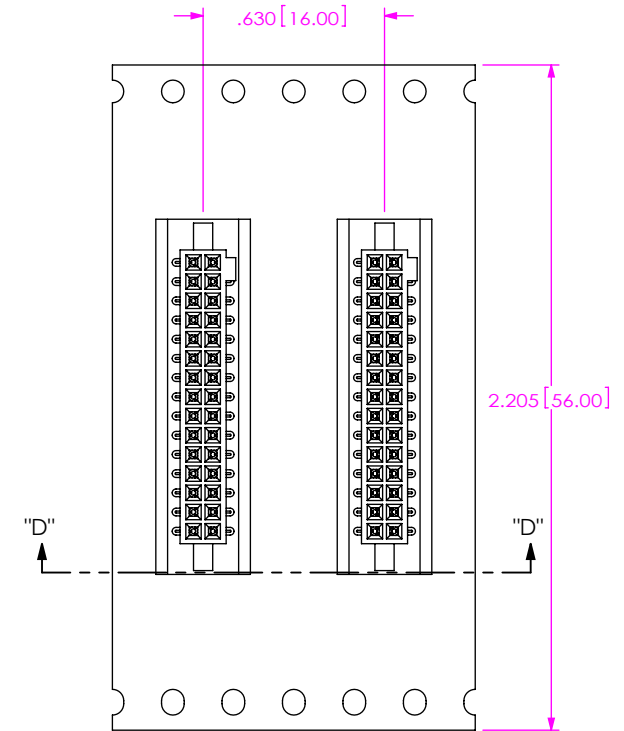
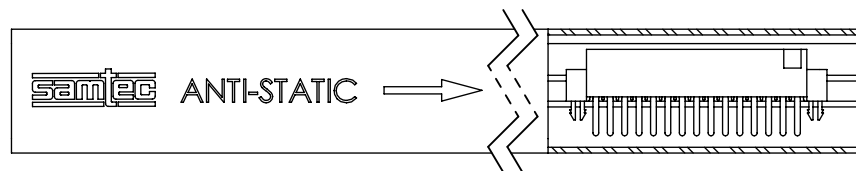
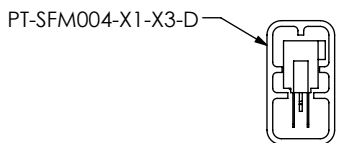
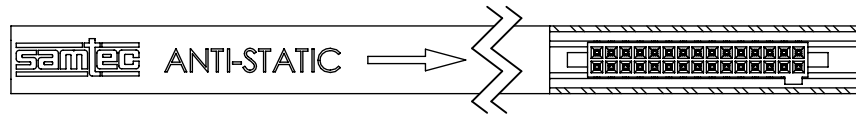
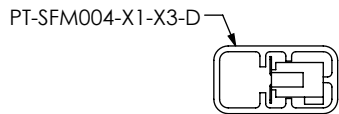
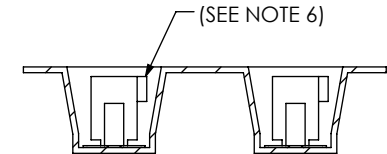


FIG 6  
-LC: LOCKING CLIP  
(SAME AS FIG 2, DIFFERENT AS SHOWN)



UNWINDING DIRECTION →



SECTION "D"-"D"  
SCALE 2 : 1  
PACKAGING VIEW  
-TR: TAPE AND REEL

LEAD STYLE	PACKAGING TUBE	PLUG
-105-T2-X-D, -105-T2-X-D-LC, -105-T2-D-A, -105-T2-D-K-LC	PT-1-24-14-09	TP-24-02
-T1-D, -T1-D-LC, -T1-D-A, -T1-D-K	PT-SFM004-X1-X3-D	TP-24-02
-T2-D, -T2-D-K, -T2-D-LC, -T2-D-A, -T2-D-K-A, -T2-D-LC-K	PT-SFM004-X1-X3-D	TP-24-02
-102-T1-D, -102-T1-D-LC, -102-T1-D-A, -102-T1-D-K	PT-1-24-15-09	TP-24-02

\*FOR MACHINE LOADING OF TUBES FOR PARTS W/O PADS USE PT-1-24-14-09, TP-24-02

5 POS -T1 LEAD STYLE MAY BE TUBED USING  
PT-1-24-15-09, TP-24-02

PROPRIETARY NOTE

THIS DOCUMENT CONTAINS CONFIDENTIAL AND PROPRIETARY INFORMATION AND ALL DESIGN, MANUFACTURING, REPRODUCTION, USE, PATENT RIGHTS AND SALES RIGHTS ARE EXPRESSLY RESERVED BY SAMTEC, INC. THIS DOCUMENT SHALL NOT BE DISCLOSED, IN WHOLE OR PART, TO ANY UNAUTHORIZED PERSON OR ENTITY NOR REPRODUCED, TRANSFERRED OR INCORPORATED IN ANY OTHER PROJECT IN ANY MANNER WITHOUT THE EXPRESS WRITTEN CONSENT OF SAMTEC, INC.

DO NOT SCALE DRAWING

SHEET SCALE: 3:1



520 PARK EAST BLVD, NEW ALBANY, IN 47150  
PHONE: 812-944-6733 FAX: 812-948-5047  
e-Mail info@SAMTEC.com code 55322

DESCRIPTION:  
.050 x .050 SOCKET STRIP DOUBLE ROW ASSEMBLY

DWG. NO.  
SFC-1XX-XX-XX-D-XX

BY: BRATCHER 5/25/01

SHEET 3 OF 3