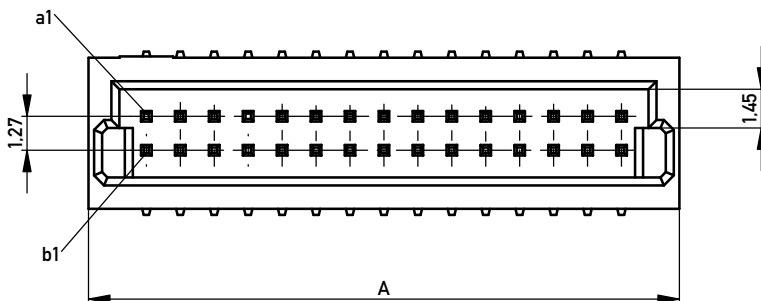
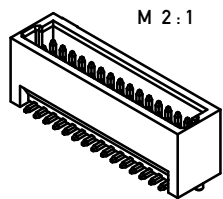
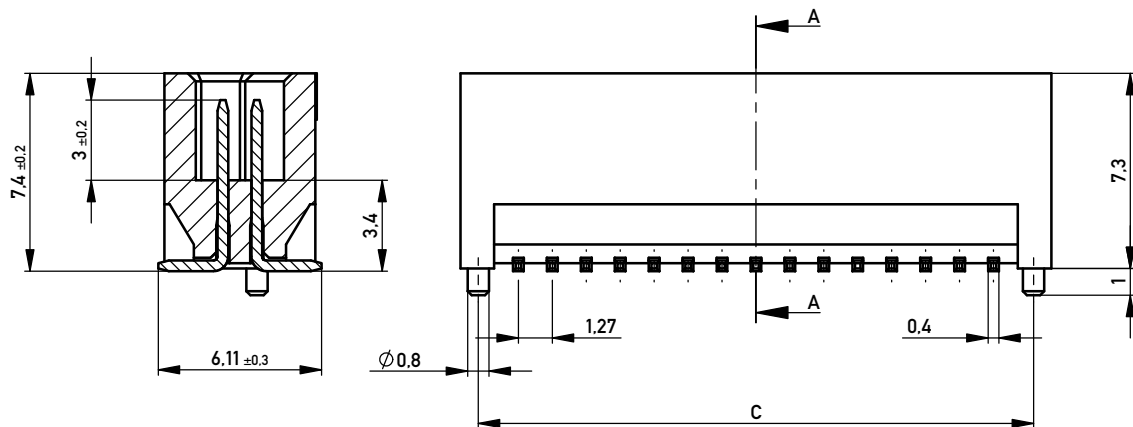
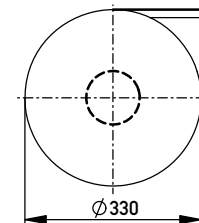


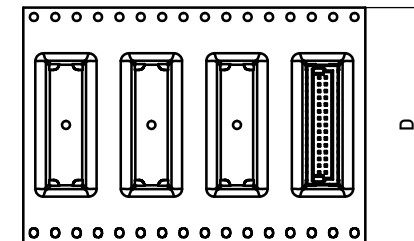
SCHNITT A-A



Verpackt in Gurtverpackung
Tape on Reel Packaging
Verpackungseinheit: 350 Stück
Packaging unit: 350pcs



Abspulrichtung - Reel off Direction

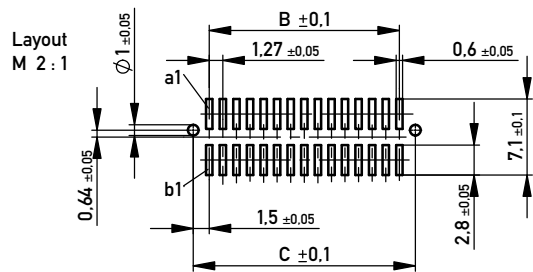


Verpackung Stange / Stange & Ansaughaube
packaging tube / tube & cap

100	9
80	11
70	12
60	14
50	17
40	21
30	27
20	38
10	64
Polzahl No. of positions	Stück / pieces

Masse und Toleranzen in Übereinstimmung mit ANSI Y15.5M-1994 / Interpret dimensions according to ANSI Y15.5M-1994

109109	109100	109091	109082	109073	109064	100	66.56	62.23	65.23	88
109108	109099	109090	109081	109072	109063	80	53.86	49.53	52.53	72
109107	109098	109089	109080	109071	109062	70	47.51	43.18	46.18	72
109106	109097	109088	109079	109070	109061	60	41.16	36.83	39.83	56
109105	109096	109087	109078	109069	109060	50	34.81	30.48	33.48	56
109104	109095	109086	109077	109068	109059	40	28.46	24.13	27.13	44
109103	109094	109085	109076	109067	109058	30	22.11	17.78	20.78	44
109102	109093	109084	109075	109066	109057	20	15.76	11.43	14.43	32
109101	109092	109083	109074	109065	109056	10	9.41	5.08	8.08	24
Id-Nr. tape&reel 100 mating- cycles	Id-Nr. tape&reel 10 mating- cycles	Id-Nr. tube&cap 100 mating- cycles	Id-Nr. tube&cap 10 mating- cycles	Id-Nr. tube 100 mating- cycles	Id-Nr. tube 10 mating- cycles	Polzahl no of positions	Mass A	Mass B	Mass C	Mass D



Bei Gurtverpackung ist Ansaughaube immer montiert.
Tape & reel packaging is always with assembly cap.

Copyright by ERNI GmbH
Proprietary notice pursuant to ISO 9006 to be observed.

Information:	Tolerances	Scale 5:1
All rights reserved. Only for Information. To ensure that this is the latest version of this drawing, please contact one of the ERNI companies before using.	Subject to modification without prior notice. Drawing will not be updated.	Designation
www.ERNI.com	www.ERNI.com	MiniMez Vertical Male SMT with locating pegs 3,4mm
Index	Date	109055
		1
		A3
		Class MINIMEZ