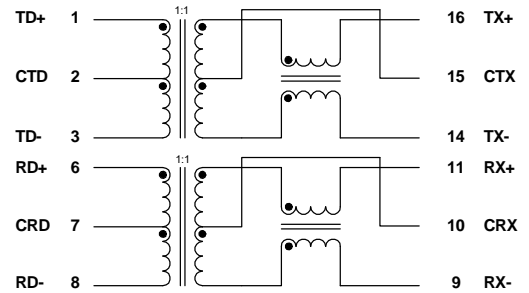
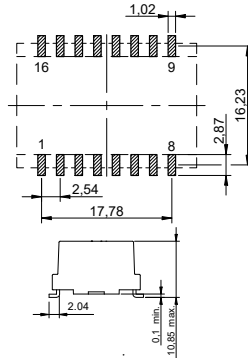
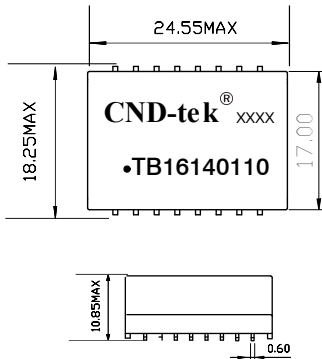


1. Compatible with various 10/100 Base-TX transceiver requiring 1:1 transmit and receive turns ratio
2. Compliant with IEEE 802.3ab standard including baseline wander compensation specification of $350\mu\text{H}$ OCL when Biased at 8mA
3. Low profile Surface Mount Packaging designed for Hi-Temp Reflow Process
4. Single channel interface for 10/100Mbps Ethernet applications with CMC's tuned to Enhance EMC system performance
5. Operating Temperature range: -40°C TO $+85^{\circ}\text{C}$
6. Storage temperature range: -40°C TO $+125^{\circ}\text{C}$



DIMENSIONS & SCHEMATICS

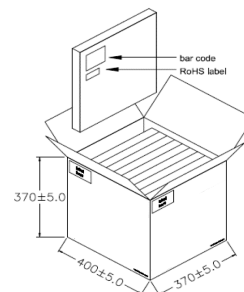
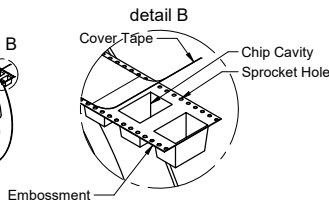
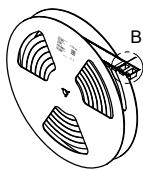


All 16 terminals must lie on a plane within .004mm of surface a after lead tinning

TECHNICAL SPECIFICATIONS

OCL :	350 μH Min. @ 100 KHz, 100mV with 8mA DC Bias
DCR:	1.20 Ω Max.
Turns Ratio($\pm 2\%$):	1CT:1CT(TX), 1CT:1CT(RX)
Insertion Loss:	-1.4dB Max. @ 0.5M-100MHz
Return Loss:	-12dB Min. @ 0.5M-30MHz -10dB Min. @ 30-45 MHz -9dB Min. @ 45-60 MHz -8dB Min. @ 60-80 MHz
Cross Talk:	-40 dB Min. @ 1-100 MHz
DCMR:	-33dB Min. @ 1-100MHz
Isolation HI-POT:	4000Vrms 1mA 60Second

PACKING SPECIFICATION



1. units/reel:250PCS
2. reel/carton:3PCS
3. units/carton :750PCS