



MICROCHIP

BM70 EVB User's Guide

Note the following details of the code protection feature on Microchip devices:

- Microchip products meet the specification contained in their particular Microchip Data Sheet.
- Microchip believes that its family of products is one of the most secure families of its kind on the market today, when used in the intended manner and under normal conditions.
- There are dishonest and possibly illegal methods used to breach the code protection feature. All of these methods, to our knowledge, require using the Microchip products in a manner outside the operating specifications contained in Microchip's Data Sheets. Most likely, the person doing so is engaged in theft of intellectual property.
- Microchip is willing to work with the customer who is concerned about the integrity of their code.
- Neither Microchip nor any other semiconductor manufacturer can guarantee the security of their code. Code protection does not mean that we are guaranteeing the product as "unbreakable."

Code protection is constantly evolving. We at Microchip are committed to continuously improving the code protection features of our products. Attempts to break Microchip's code protection feature may be a violation of the Digital Millennium Copyright Act. If such acts allow unauthorized access to your software or other copyrighted work, you may have a right to sue for relief under that Act.

Information contained in this publication regarding device applications and the like is provided only for your convenience and may be superseded by updates. It is your responsibility to ensure that your application meets with your specifications. MICROCHIP MAKES NO REPRESENTATIONS OR WARRANTIES OF ANY KIND WHETHER EXPRESS OR IMPLIED, WRITTEN OR ORAL, STATUTORY OR OTHERWISE, RELATED TO THE INFORMATION, INCLUDING BUT NOT LIMITED TO ITS CONDITION, QUALITY, PERFORMANCE, MERCHANTABILITY OR FITNESS FOR PURPOSE. Microchip disclaims all liability arising from this information and its use. Use of Microchip devices in life support and/or safety applications is entirely at the buyer's risk, and the buyer agrees to defend, indemnify and hold harmless Microchip from any and all damages, claims, suits, or expenses resulting from such use. No licenses are conveyed, implicitly or otherwise, under any Microchip intellectual property rights unless otherwise stated.

Trademarks

The Microchip name and logo, the Microchip logo, dsPIC, FlashFlex, flexPWR, JukeBlox, KEELOQ, KEELOQ logo, Kleer, LANCheck, MediaLB, MOST, MOST logo, MPLAB, OptoLyzer, PIC, PICSTART, PIC³² logo, RightTouch, SpyNIC, SST, SST Logo, SuperFlash and UNI/O are registered trademarks of Microchip Technology Incorporated in the U.S.A. and other countries.

The Embedded Control Solutions Company and mTouch are registered trademarks of Microchip Technology Incorporated in the U.S.A.

Analog-for-the-Digital Age, BodyCom, chipKIT, chipKIT logo, CodeGuard, dsPICDEM, dsPICDEM.net, ECAN, In-Circuit Serial Programming, ICSP, Inter-Chip Connectivity, KleerNet, KleerNet logo, MiWi, motorBench, MPASM, MPF, MPLAB Certified logo, MPLIB, MPLINK, MultiTRAK, NetDetach, Omniscient Code Generation, PICDEM, PICDEM.net, PICkit, PICtail, RightTouch logo, REAL ICE, SQI, Serial Quad I/O, Total Endurance, TSHARC, USBCheck, VariSense, ViewSpan, WiperLock, Wireless DNA, and ZENA are trademarks of Microchip Technology Incorporated in the U.S.A. and other countries.

SQTP is a service mark of Microchip Technology Incorporated in the U.S.A.

Silicon Storage Technology is a registered trademark of Microchip Technology Inc. in other countries.

GestIC is a registered trademark of Microchip Technology Germany II GmbH & Co. KG, a subsidiary of Microchip Technology Inc., in other countries.

All other trademarks mentioned herein are property of their respective companies.

© 2015, Microchip Technology Incorporated, Printed in the U.S.A., All Rights Reserved.

ISBN:978-1-63277-899-4

**QUALITY MANAGEMENT SYSTEM
CERTIFIED BY DNV
= ISO/TS 16949 =**

Microchip received ISO/TS-16949:2009 certification for its worldwide headquarters, design and wafer fabrication facilities in Chandler and Tempe, Arizona; Gresham, Oregon and design centers in California and India. The Company's quality system processes and procedures are for its PIC[®] MCUs and dsPIC[®] DSCs, KEELOQ[®] code hopping devices, Serial EEPROMs, microperipherals, nonvolatile memory and analog products. In addition, Microchip's quality system for the design and manufacture of development systems is ISO 9001:2000 certified.



BM70 EVB USER'S GUIDE

Object of Declaration
BM70 EVB Development Kit

EU Declaration of Conformity

Manufacturer: Microchip Technology Inc.
2355 W. Chandler Blvd.
Chandler, Arizona, 85224-6199
USA

This declaration of conformity is issued by the manufacturer.

The development/evaluation tool is designed to be used for research and development in a laboratory environment. This development/evaluation tool is not a Finished Appliance, nor is it intended for incorporation into Finished Appliances that are made commercially available as single functional units to end users under EU EMC Directive 2004/108/EC and as supported by the European Commission's Guide for the EMC Directive 2004/108/EC (8th February 2010).

This development/evaluation tool complies with EU RoHS2 Directive 2011/65/EU.

This development/evaluation tool, when incorporating wireless and radio-telecom functionality, is in compliance with the essential requirement and other relevant provisions of the R&TTE Directive 1999/5/EC and the FCC rules as stated in the declaration of conformity provided in the module datasheet and the module product page available at www.microchip.com.

For information regarding the exclusive, limited warranties applicable to Microchip products, please see Microchip's standard terms and conditions of sale, which are printed on our sales documentation and available at www.microchip.com.

Signed for and on behalf of Microchip Technology Inc. at Chandler, Arizona, USA


Derek Carlson
VP Development Tools

12-Sep-14
Date

BM70 EVB User's Guide

NOTES:



Table of Contents

Chapter 1. Introduction

1.1 Kit Contents 13
1.2 BM70BLES1FC2 Functionality 13
1.3 BM70 BLES1FC2 Components 14
1.4 USB to UART Converter DUT 16

Chapter 2. Hardware Description

2.1 Hardware Features 17

Chapter 3. Flash Programming Procedure

3.1 Flash Programming 21

Chapter 4. UI Configuration and Download

4.1 UI Configuration 25
4.2 Downloading UI Parameters 29

Chapter 5. UART Command Tool Environment Setting

5.1 Auto-Pattern Test Tool SET UP 31
5.2 Manual Test Tool 33
A.1 Block Diagram 35

BM70 EVB User's Guide

NOTES:

Preface

NOTICE TO CUSTOMERS

All documentation becomes dated, and this manual is no exception. Microchip tools and documentation are constantly evolving to meet customer needs, so some actual dialogs and/or tool descriptions may differ from those in this document. Please refer to our web site (www.microchip.com) to obtain the latest documentation available.

Documents are identified with a “DS” number. This number is located on the bottom of each page, in front of the page number. The numbering convention for the DS number is “DSXXXXXXXXA”, where “XXXXXXXX” is the document number and “A” is the revision level of the document.

For the most up-to-date information on development tools, see the MPLAB® X IDE online help. Select the Help menu, and then Topics to open a list of available online help files.

INTRODUCTION

This chapter contains general information that will be useful to know before using the BM70BLES1FC2 Evaluation Board (EVB). Items discussed in this chapter include:

- [Document Layout](#)
- [Conventions Used in this Guide](#)
- [Recommended Reading](#)
- [The Microchip Web Site](#)
- [Development Systems Customer Change Notification Service](#)
- [Customer Support](#)
- [Document Revision History](#)

DOCUMENT LAYOUT

This document describes how to use the BM70BLES1FC2 Evaluation Board (EVB), (also referred to as “Evaluation kit”) as a development tool to emulate and debug firm-ware on a target board. This user's guide is composed of the following chapters:

- **Chapter 1. “Introduction”** provides an overview of the BM70BLES1FC2 EVB and its features.
- **Chapter 2. “Hardware”** provides hardware details of the BM70BLES1FC2 EVB.
- **Chapter 3. “Flash Programming Procedure”** provides information about various steps involved in downloading the Flash code of the BM70BLES1FC2 EVB.
- **Chapter 4. “UI Configuration and Download”** describes UI settings and UI table download procedures of the BM70BLES1FC2 EVB.
- **Chapter 5. “UART Command Tool Environment Setting”** provides information about the Auto Pattern Test and Manual Test tools of the BM70BLES1FC2 EVB.
- **Appendix A. “Reference Schematics”** provides information about the EVB circuits of the BM70 BLES1FC2 EVB.

BM70 EVB User's Guide

CONVENTIONS USED IN THIS GUIDE

This manual uses the following documentation conventions:

DOCUMENTATION CONVENTIONS

Description	Represents	Examples
Italic characters	Referenced books	<i>MPLAB IDE User's Guide</i>
	Emphasized text	...is the <i>only</i> compiler...
Initial caps	A window	the Output window
	A dialog	the Settings dialog
	A menu selection	select Enable Programmer
Quotes	A field name in a window or dialog	"Save project before build"
Underlined, italic text with right angle bracket	A menu path	<u>File > Save</u>
Bold characters	A dialog button	Click OK
	A tab	Click the Power tab
Text in angle brackets < >	A key on the keyboard	Press <Enter>, <F1>
Plain Courier New	Sample source code	#define START
	Filenames	autoexec.bat
	File paths	c:\mcc18\h
	Keywords	_asm, _endasm, static
	Command-line options	-Opa+, -Opa-
	Bit values	0, 1
	Constants	0xFF, 'A'
<i>Italic Courier New</i>	A variable argument	<i>file.o</i> , where <i>file</i> can be any valid filename
Square brackets []	Optional arguments	mcc18 [options] <i>file</i> [options]
Curly brackets and pipe character: { }	Choice of mutually exclusive arguments; an OR selection	errorlevel {0 1}
Ellipses...	Replaces repeated text	var_name [, var_name...]
	Represents code supplied by user	void main (void) { ... }
Notes	A Note presents information that we want to re-emphasize, either to help you avoid a common pitfall or to make you aware of operating differences between some device family members. A Note can be in a box, or when used in a table or figure, it is located at the bottom of the table or figure.	Note: This is a standard note box.
		CAUTION This is a caution note. Note 1: This is a note used in a table.

RECOMMENDED READING

This user's guide describes how to use the Evaluation kit. The following Microchip document is available and recommended as supplemental reference resources.

BM70/BM71 Data Sheet (DS60001372)

Refer to this document for detailed information on BM70 devices. Reference information found in this data sheet includes:

- BM70 Module features and pin configurations
- Electrical Specifications
- Reference Circuits

THE MICROCHIP WEB SITE

Microchip provides online support via our web site at: <http://www.microchip.com>. This web site makes files and information easily available to customers. Accessible by most Internet browsers, the web site contains the following information:

- **Product Support** – Data sheets and errata, application notes and sample programs, design resources, user's guides and hardware support documents, latest software releases and archived software
- **General Technical Support** – Frequently Asked Questions (FAQs), technical support requests, online discussion groups, Microchip consultant program member listings
- **Business of Microchip** – Product selector and ordering guides, latest Microchip press releases, listings of seminars and events; and listings of Microchip sales offices, distributors and factory representatives

BM70 EVB User's Guide

DEVELOPMENT SYSTEMS CUSTOMER CHANGE NOTIFICATION SERVICE

Microchip's customer notification service helps keep customers current on Microchip products. Subscribers will receive e-mail notification whenever there are changes, updates, revisions or errata related to a specified product family or development tool of interest.

To register, access the Microchip web site at www.microchip.com, click on Customer Change Notification and follow the registration instructions.

The Development Systems product group categories are:

- **Compilers** – The latest information on Microchip C compilers and other language tools
- **Emulators** – The latest information on the Microchip in-circuit emulator, MPLAB REAL ICE™
- **In-Circuit Debuggers** – The latest information on the Microchip in-circuit debugger, MPLAB ICD 3
- **MPLAB X IDE** – The latest information on Microchip MPLAB X IDE, the Windows® Integrated Development Environment for development systems tools
- **Programmiers** – The latest information on Microchip programmers including the PICkit™ 3 development programmer

CUSTOMER SUPPORT

Users of Microchip products can receive assistance through several channels:

- Distributor or Representative
- Local Sales Office
- Field Application Engineer (FAE)
- Technical Support

Customers should contact their distributor, representative or Field Application Engineer (FAE) for support. Local sales offices are also available to help customers. A listing of sales offices and locations is included in the back of this document.

Technical support is available through the web site at: <http://support.microchip.com>.

DOCUMENT REVISION HISTORY

Revision A (October 2015)

This is the initial released version of this document.

Revision B (October 2015)

This revision includes the following updates:

- Added [Figure 2-1](#), [Table 2-1](#) through [Table 2-10](#)
- Updated [Figure A-1](#), [Figure 3-4](#).

Minor updates to text and formatting were incorporated throughout the document.

BM70 EVB User's Guide

NOTES:

Chapter 1. Introduction

Thank you for purchasing a BM70BLES1FC2 Evaluation Kit. This document describes a detailed information about the Microchip Technology BM70BLES1FC2 Evaluation Board (EVB).

The BM70BLES1FC2 EVB is designed to emulate the functions of the Microchip BM70 BLE module. It also enables the customer to evaluate and demonstrate the capabilities of the Microchip BM70 BLE module.

This chapter includes the following topics:

1.1 “Kit Contents”

1.2 “BM70BLES1FC2 Functionality”

1.3 “BM70 BLES1FC2 Components”

1.4 “USB to UART Converter DUT”

The BM70BLES1FC2 EVB includes an integrated configuration and programming interface for plug-and-play capability. It also provides an integrated test environment for all functions supported in the BM70BLES1FC2 EVB.

1.1 KIT CONTENTS

The Evaluation kit contains the following items:

- A BM70BLES1FC2 module
- A BM70BLES1FC2 Evaluation Board

<p>Note: If you are missing any part of the kit, contact a Microchip sales office for assistance. A list of Microchip offices for sales and service is provided on the back page of this document.</p>

1.2 BM70BLES1FC2 FUNCTIONALITY

The following are key features of the BM70BLES1FC2 Evaluation Board.

- Optional power source between USB, button cell battery and PICtail™ interface
- Connection interface between module UART and MCU Evaluation board
- Connection and test interface between the BM70 module and PC Tool (UART Command Tool)
- Update Flash code or UI table using the USB port (micro-USB)
- Modes configuration for Application mode or Test mode
- LED, push button, I²C and serial Flash test interface

BM70 EVB User's Guide

1.3 BM70 BLES1FC2 COMPONENTS

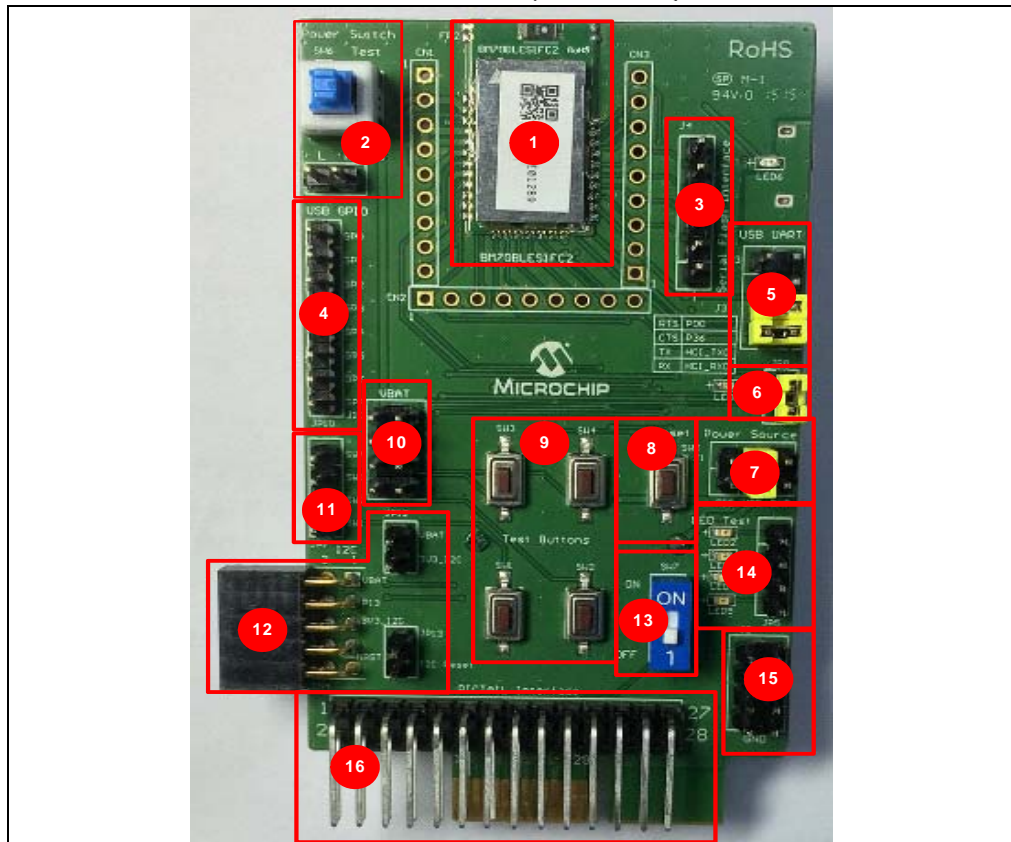
Representations of the layout of the BM70BLES1FC2 Evaluation Board are shown in [Figure 1-1](#) and [Figure 1-2](#)

The top assembly of the board includes these key components, as indicated in [Figure 1-1](#):

1. BM70BLES1FC2 Module.
2. Power Switch Test Button.
3. Serial Flash Interface.
4. USB GPIO interface.
5. USB UART interface.
6. Default LED display.
7. Power Source Connector (Jumper J1).
8. Reset Button.
9. Test buttons (Push-Low).
10. VBAT connector.
11. Test buttons connector (Jumper J7).
12. I²C Interface.
13. DIP Switch SW7.
14. LED test interface.
15. GND test pads.
16. PICtail Interface.

For details on these features, refer to the [Chapter 2. "Hardware Description"](#).

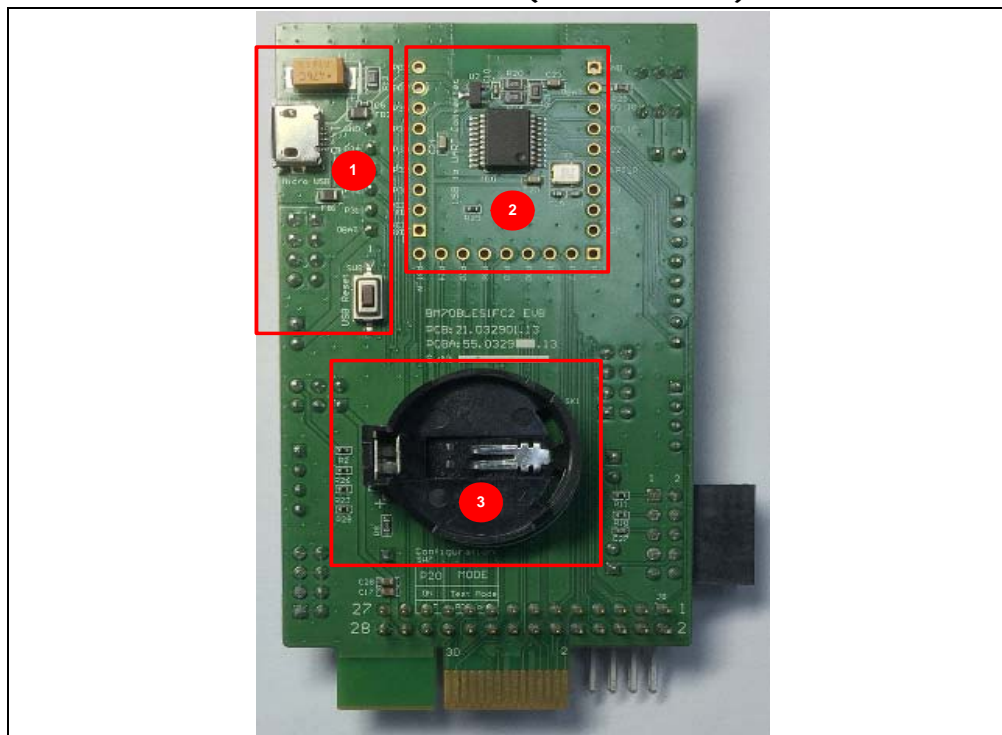
FIGURE 1-1: BM70BLES1FC2 EVB (TOP VIEW)



The bottom assembly of the board includes these key components, as indicated in [Figure 1-2](#):

1. USB to UART converter. Switch SW8 is the USB Reset button.
2. Module pads.
3. Provision for coin cell battery.

FIGURE 1-2: BM70BLES1FC2 EVB (BOTTOM VIEW)

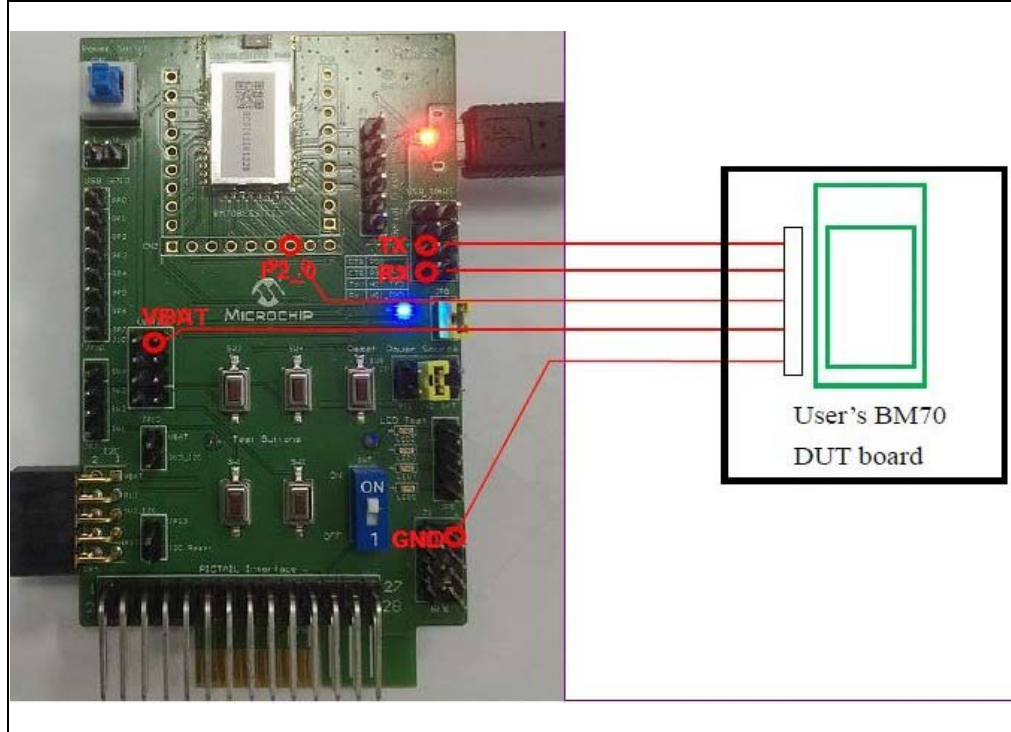


BM70 EVB User's Guide

1.4 USB TO UART CONVERTER DUT

The USB to UART converter circuit can be used independently to connect to the BM70BLES1FC2 Device Under Test (DUT) board by connecting the UART configuration interface, see [Figure 1-3](#). The VBAT, P2_0, Tx, Rx and GND can be connected to the BM70 DUT board for emulation. The user need to configure the BM70BLES1FC2 EVB to Test mode and then connect the USB cable to the PC to power-up the test connection.

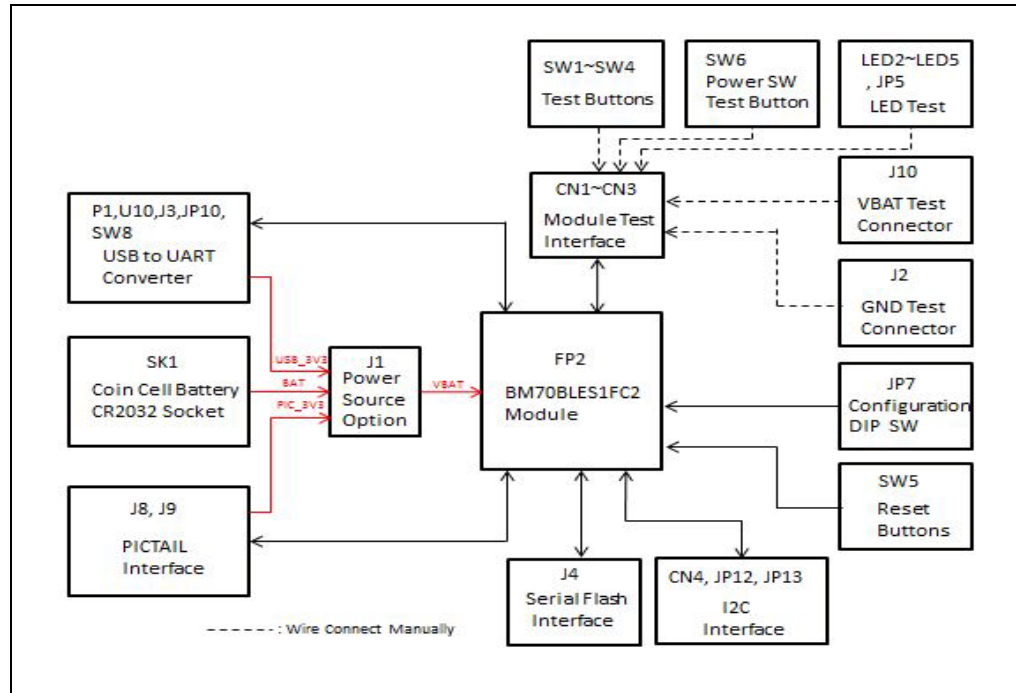
FIGURE 1-3: USB TO UART CONVERTER CONNECTED TO DUT



Chapter 2. Hardware

The BM70BLES1FC2 board includes a range of peripheral features, see [Figure 2-1](#). This chapter describes the hardware features of the BM70BLES1FC2 board.

FIGURE 2-1: BM70 EVB BLOCK DIAGRAM



2.1 HARDWARE FEATURES

The following key features of the BM70 BLES1FC2 board are provided in the order given in [1.3 “BM70 BLES1FC2 Components”](#). Refer to [Figure 1-1](#) and [Figure 1-2](#) for their locations on the board.

2.1.1 Power Supply

There are three ways to supply power to the board:

- Button Cell Battery (SK1)
- USB_3V3
- PICtail 3V3

2.1.2 USB connectivity

The BM70 EVB provides micro-USB cable connectivity.

BM70 EVB User's Guide

2.1.3 Switches

Push-button switches provide the following functionalities:

- SW1, SW2, SW3 and SW4 – Test buttons.
- SW5 – Reset button
- SW6 – Power switch test button, which includes Push-High and Push-Low header J6
- SW7 – DIP switch
- SW8 – USB Reset button

2.1.4 LEDs

The six LEDs, LED1 through LED6, are connected to the BM70BLES1FC2 board.

- LED1 – Default LED, connected to P0_2
- LED2, LED3, LED4, and LED5 – Test LEDs
- LED6 – USB connection indicator. This LED will turn ON when USB 5V input is connected.

2.1.5 Jumpers

The following 12 jumpers are available on the BM70BLES1FC2 board. [Table 2-1](#) through [Table 2-12](#) provide the pin and signal details of the jumpers.

TABLE 2-1: POWER SOURCE OPTION CONNECTOR

Part Number	Pin	Signal	Description
J1	1	PIC_3V3	Power Source from PICTail™ 3.3V, enabled by jumper connection to J1 pin 2
	2	VBAT	BM70 Power source input
	3	USB_3V3	Power Source from USB 5V ~ 3.3V LDO output enables by jumper connection to J1 pin 4
	4	VBAT	BM70 Power source input
	5	BAT	Power source from Coin-Cell Battery enabled by connection to J1 pin 6
	6	VBAT	BM70 Power source input

TABLE 2-2: GROUND TEST CONNECTOR

Part Number	Pin	Signal	Remarks
J2	1	GND	Ground Test Pin
	2	GND	Ground Test Pin
	3	GND	Ground Test Pin
	4	GND	Ground Test Pin
	5	GND	Ground Test Pin
	6	GND	Ground Test Pin
	7	GND	Ground Test Pin
	8	GND	Ground Test Pin

TABLE 2-3: USB UART INTERFACE U10

Part Number	Pin	Signal	Remarks
J3	1	RTS	U10MCP2200RTS pin
	2	P0_0	BM70 GPIO P0_0 (Pin 15) Configured as CTS and connected to J3 pin1 by jumper
	3	CTS	U10MCP2200 CTS pin
	4	P3_6	BM70 GPIO P3_6 (Pin 17) Configured as RTS and connected to J3 pin 3 by jumper
	5	Tx	U10MCP2200 Rx pin
	6	HCI_TXD	BM70 HCI_TXD (Pin 23) Connected to J3 pin 5 by jumper
	7	Rx	U10MCP2200 Tx pin
	8	HCI_RXD	BM70 HCI_RXD (Pin 22) Connected to J3 pin 7 by jumper

TABLE 2-4: SERIAL FLASH INTERFACE

Part Number	Pin	Signal	Remark
J4	1	VBAT	BM70 Power Source input
	2	P3_1	Configured as SPI_NCS
	3	P3_2	Configured as SPI_MISO
	4	P3_3	Configured as SPI_MOSI
	5	P3_4	Configured as SPI_SCLK
	6	GND	Ground Pin

TABLE 2-5: VBAT TEST CONNECTOR

Part Number	Pin	Signal	Remark
J10	1	VBAT	VBAT Test Pin
	2	VBAT	VBAT Test Pin
	3	VBAT	VBAT Test Pin
	4	VBAT	VBAT Test Pin
	5	VBAT	VBAT Test Pin
	6	VBAT	VBAT Test Pin
	7	VBAT	VBAT Test Pin
	8	VBAT	VBAT Test Pin

TABLE 2-6: JUMPER CONNECTOR J10

Part Number	Pin	Signal	Remark
JP10	1 to 8	GP0 to GP7	USB GPIO Interface

BM70 EVB User's Guide

TABLE 2-7: JUMPER CONNECTOR JP12

Part Number	Pin	Signal	Remark
JP12	1	VBAT	VBAT Test Pin
	2	3V3_I ² C	3V3 voltage of I ² C interface, short to VBAT for voltage supply

TABLE 2-8: JUMPER CONNECTOR JP13

Part Number	Pin	Signal	Remark
JP13	1	nRST	I ² C reset pin, wire connect to configured GPIO Reset pin
	2	NC	No Connect

TABLE 2-9: JUMPER CONNECTOR J5

Part Number	Pin	Signal	Remark
J5	1 to 4	LED2 to LED5	Test LED interface (PullLow enable), wire connect to test the GPIO pin

TABLE 2-10: JUMPER CONNECTOR JP6

Part Number	Pin	Signal	Remark
JP6	1	PushHigh	Latching switch SW6 PushHigh test pin, wire connect to test GPIO
	2	PushLow	Latching switch SW6 PushLow test pin, wire connect to test GPIO

TABLE 2-11: JUMPER CONNECTOR JP7

Part Number	Pin	Signal	Remark
JP7	1 to 4	SW1 to SW4	PushLow test buttons, Wire connect to test GPIO

TABLE 2-12: JUMPER CONNECTOR JP8

Part Number	Pin	Signal	Remark
JP8	1	LED	Connected to status LED (LED1)
	2	VBAT	Power Source of LED1, short to JP8 pin1 to enable status LED function

Chapter 3. Flash Programming Procedure

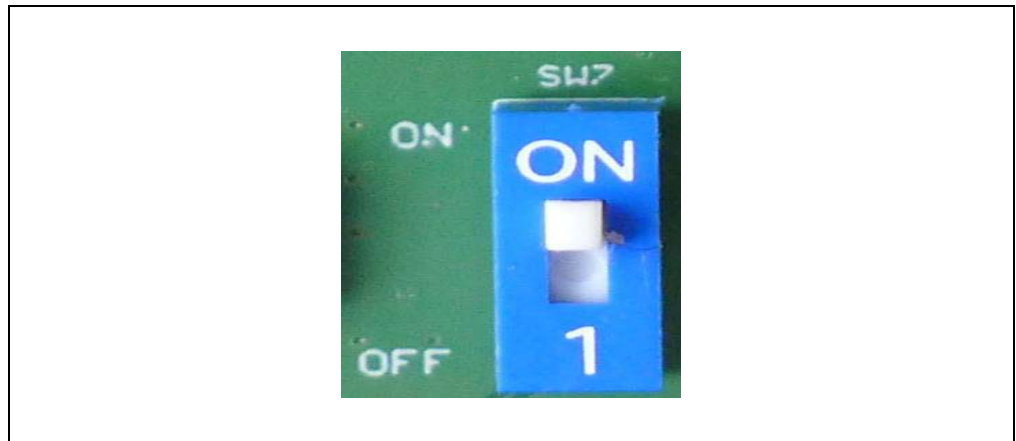
This chapter describes the Flash programming procedure using the BM70 EVB.

3.1 FLASH PROGRAMMING

To perform Flash programming, follow these steps:

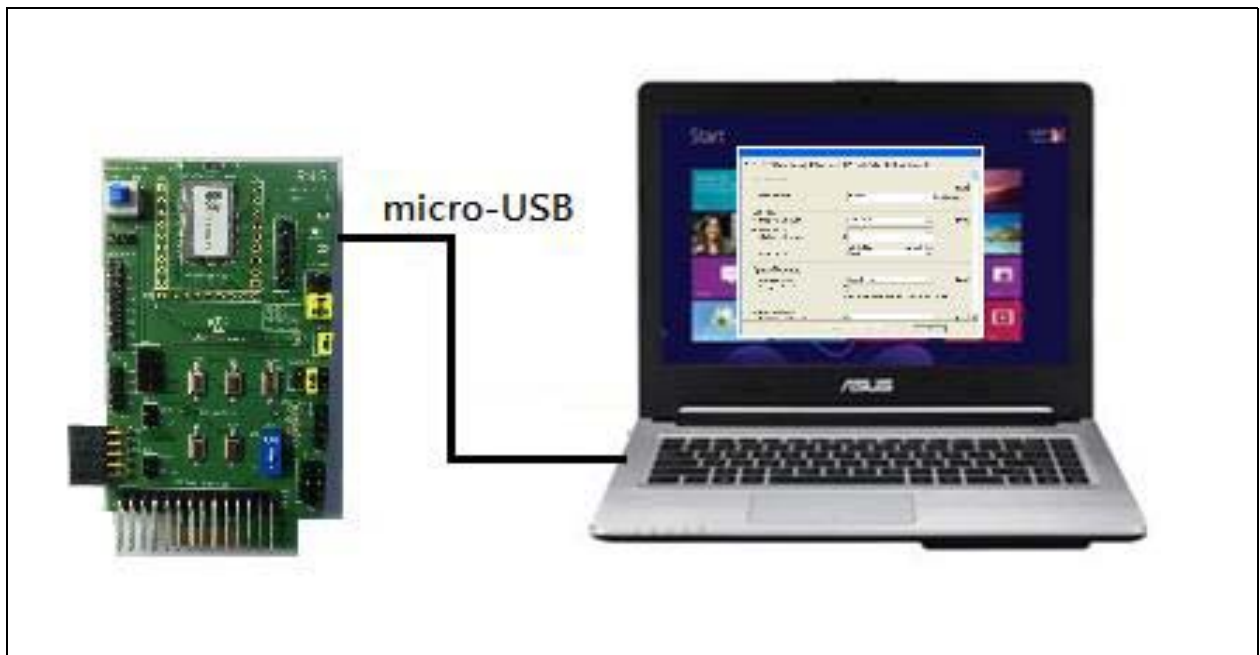
1. Set the switch SW7 to ON (Test Mode).

FIGURE 3-1: SW7 IN TEST MODE



2. Connect the BM70 EVB to a PC using the micro-USB cable.

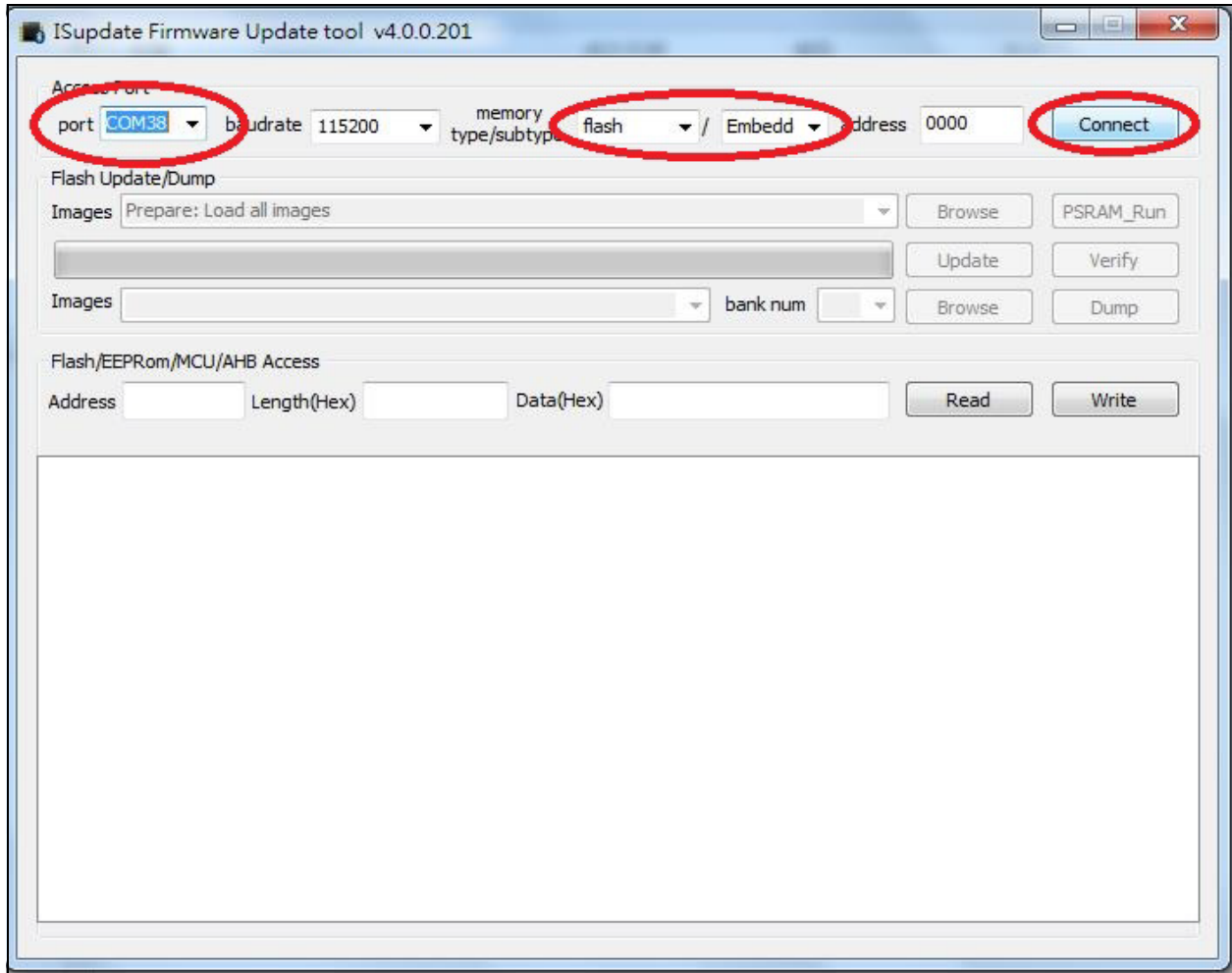
FIGURE 3-2: FLASH PROGRAMMING SETUP



BM70 EVB User's Guide

3. From the ISupdate.exe firmware update tool select the port, baud rate, memory, and address. The ISupdate.exe is available for download from the Microchip web site at <http://www.microchip.com/bm-70-pictail>.
4. Click **Connect**.

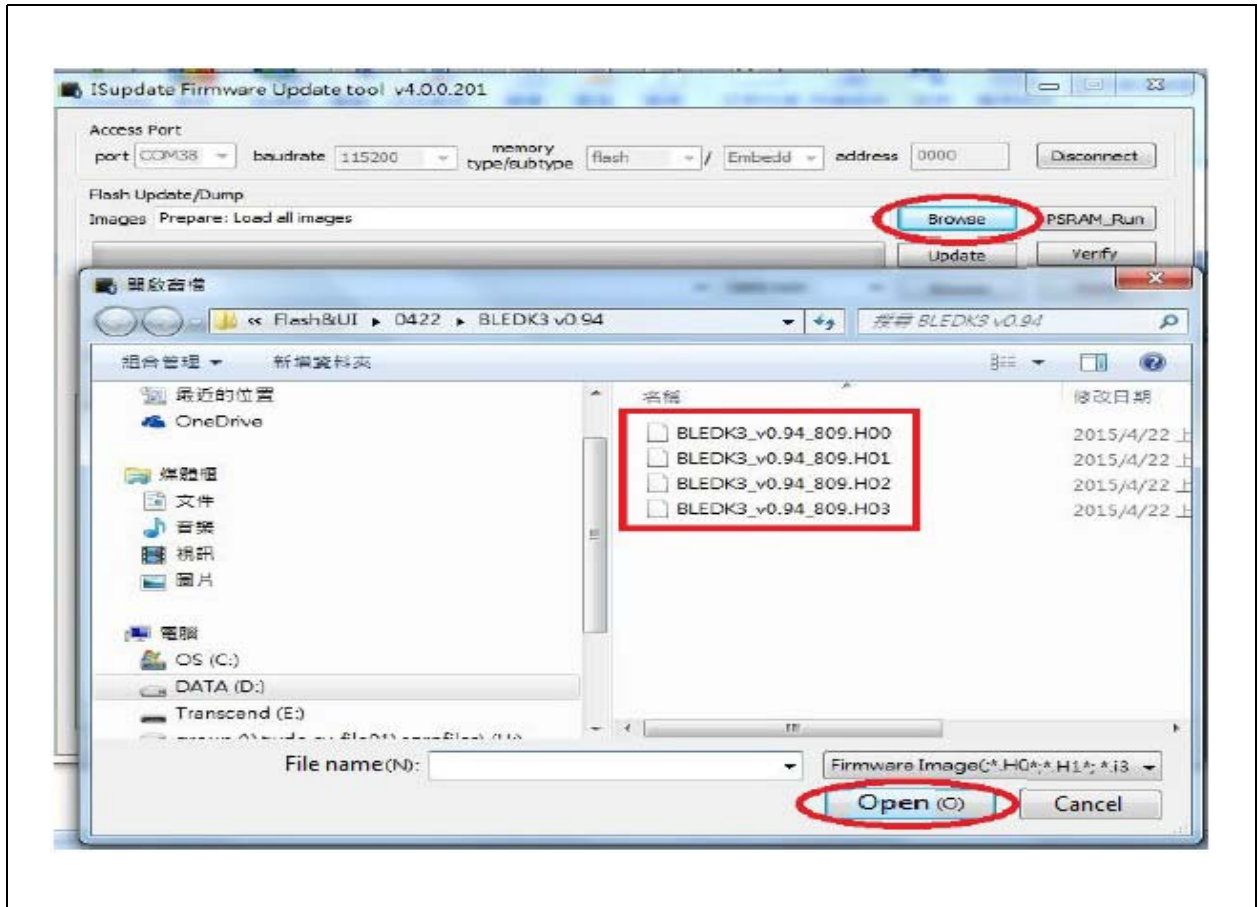
FIGURE 3-3: FIRMWARE UPDATE TOOL



Flash Programming Procedure

5. Click **Browse**. An Open window is displayed.
6. Select the Flash code file, and click **Open**.

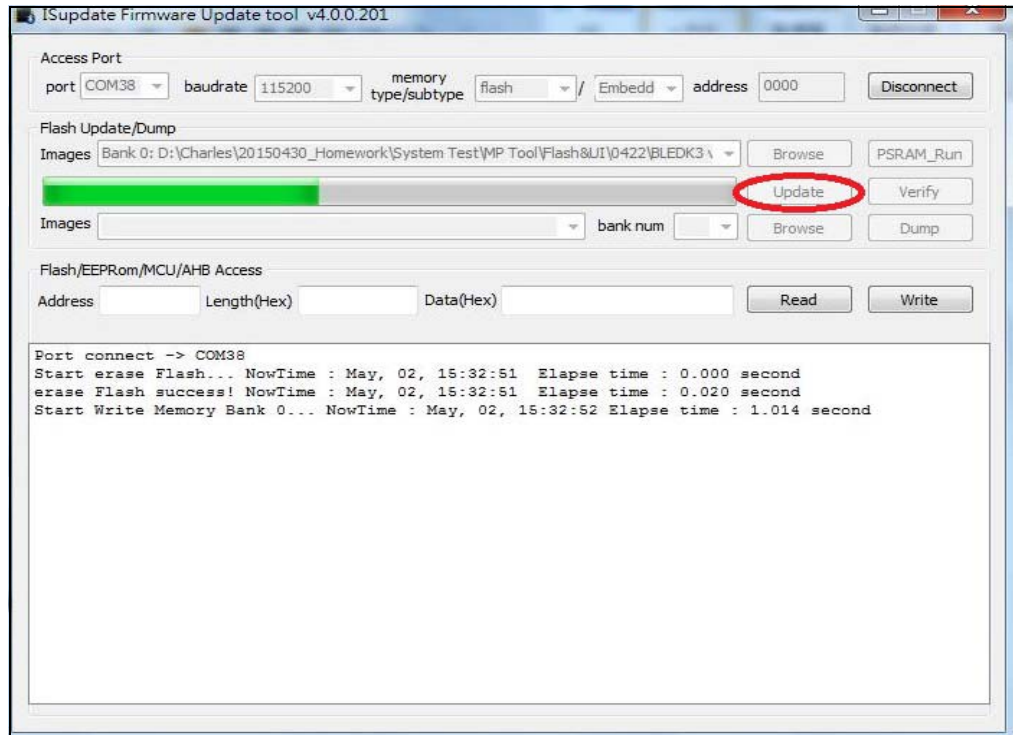
FIGURE 3-4: SELECTING THE FIRMWARE IMAGE



BM70 EVB User's Guide

7. From the `isupdate.exe` firmware update tool, click **Update**.

FIGURE 3-5: FIRMWARE UPDATE



8. The `isupdate.exe` firmware update tool will start downloading the selected Flash code.
9. Once the firmware update process is completed, reboot the BM70 EVB.

Chapter 4. UI Configuration and Download

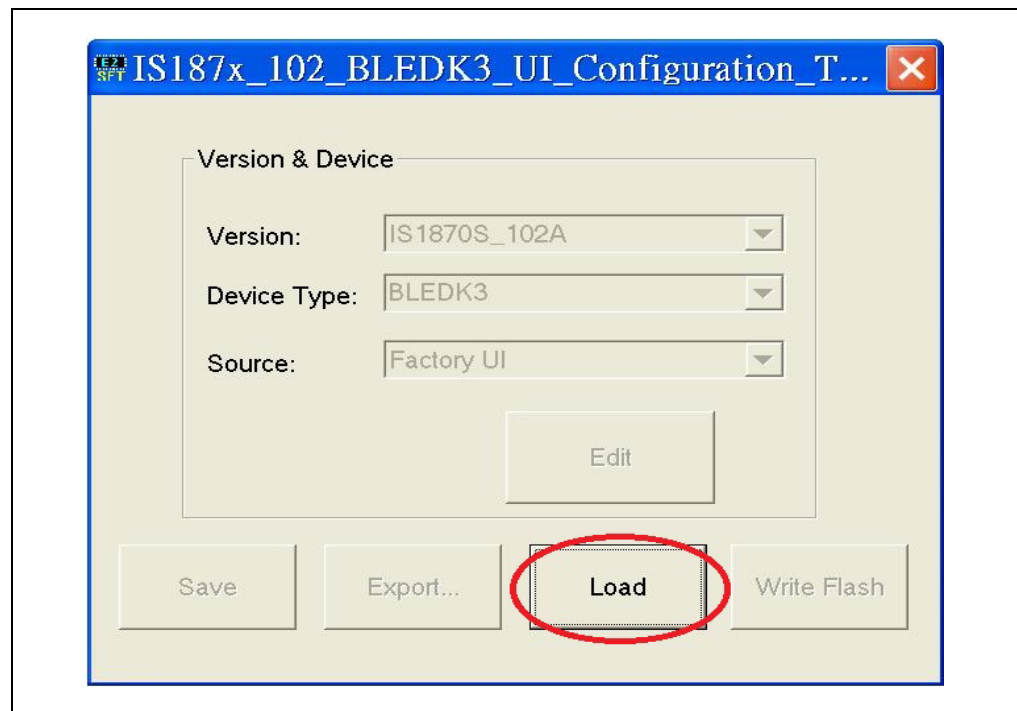
This chapter describes how to configure and download UI parameters using the UI configuration tools. Users must download the Flash codes before updating the UI parameters.

4.1 UI CONFIGURATION

To set up UI configuration, perform these actions:

1. From the UI tool, click **Load**. For demo purpose BLEDK3 UI configuration tool is used.

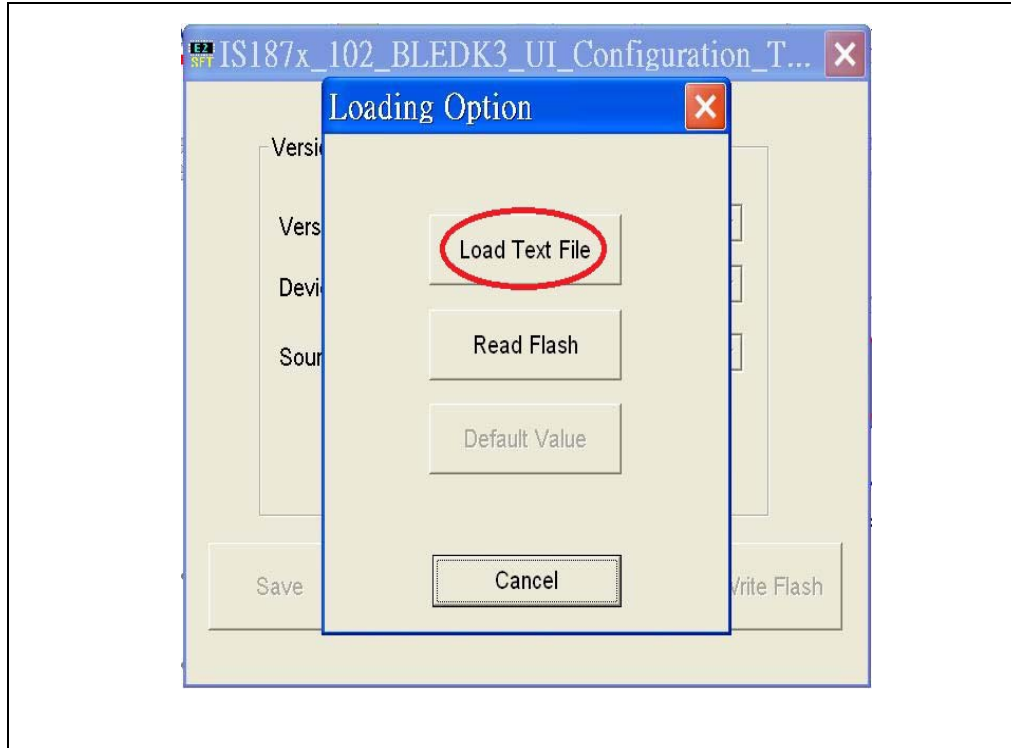
FIGURE 4-1: BLEDK3 UI CONFIGURATION TOOL



BM70 EVB User's Guide

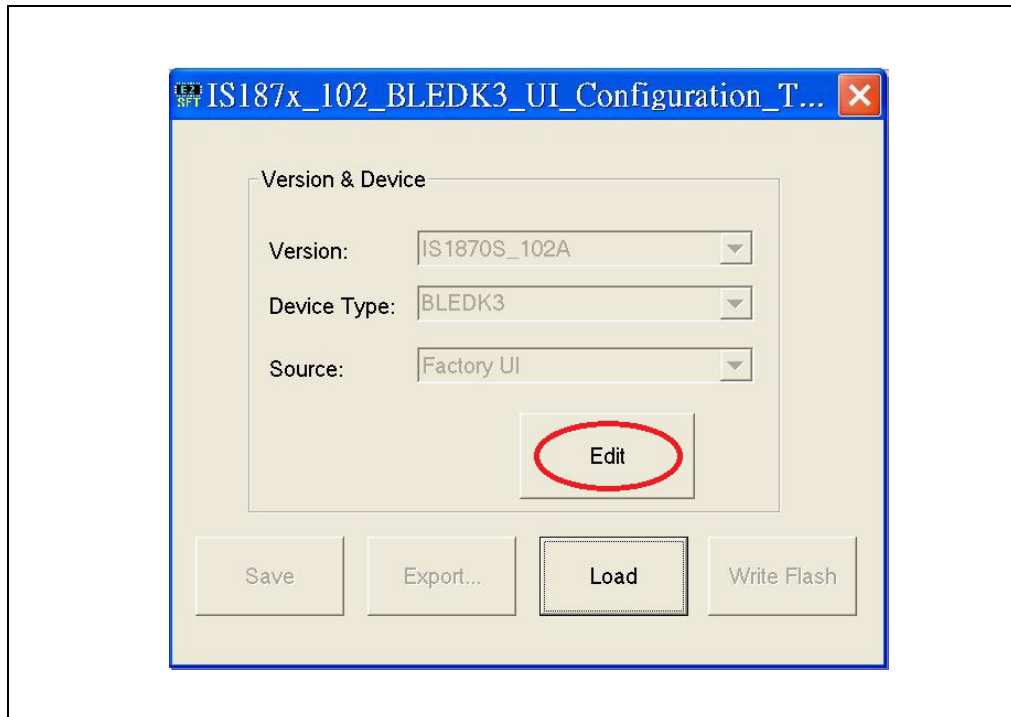
- From the Loading Option, click **Load Text File** to load UI parameters.

FIGURE 4-2: LOADING UI PARAMETERS



- Verify UI parameters and click **Edit**.

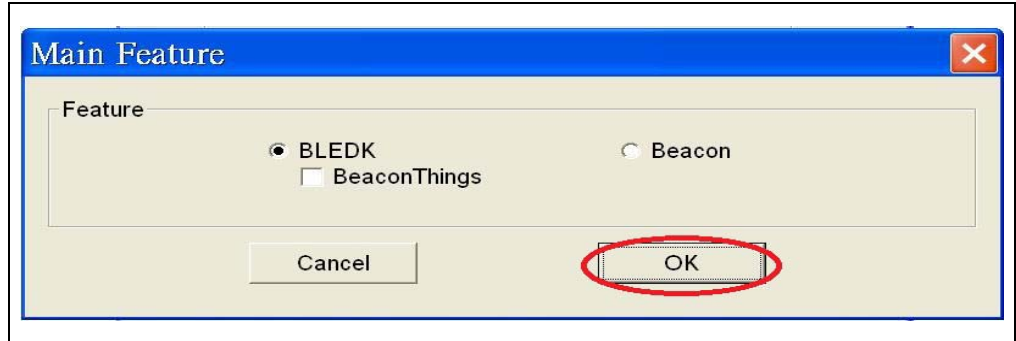
FIGURE 4-3: EDITING UI PARAMETERS



UI Configuration and Download

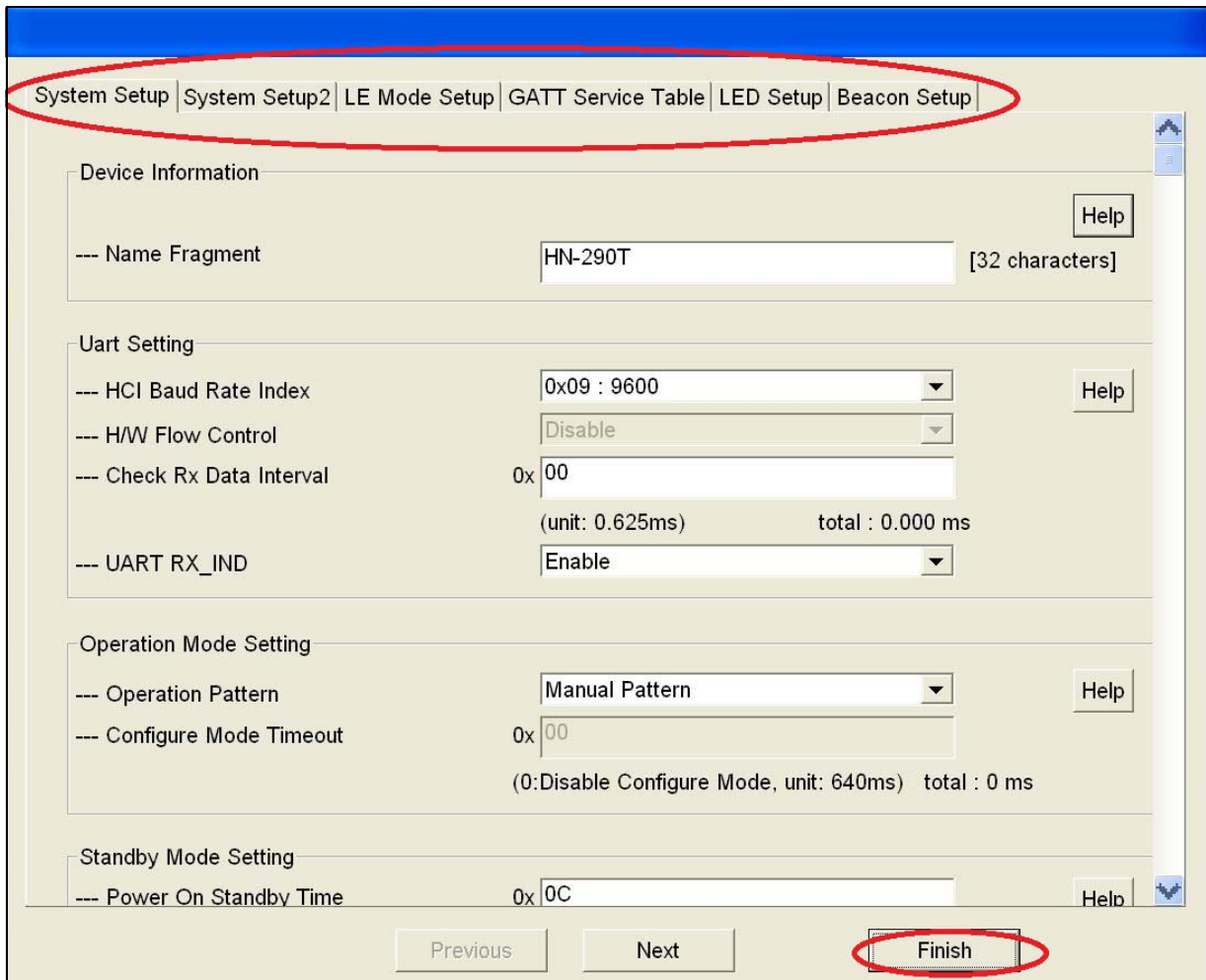
- From the Main Feature window, select the feature and click **OK**.

FIGURE 4-4: SELECTING MAIN FEATURE



- Click **Help** to display complete Device Information.

FIGURE 4-5: CONFIGURE UI PARAMETERS

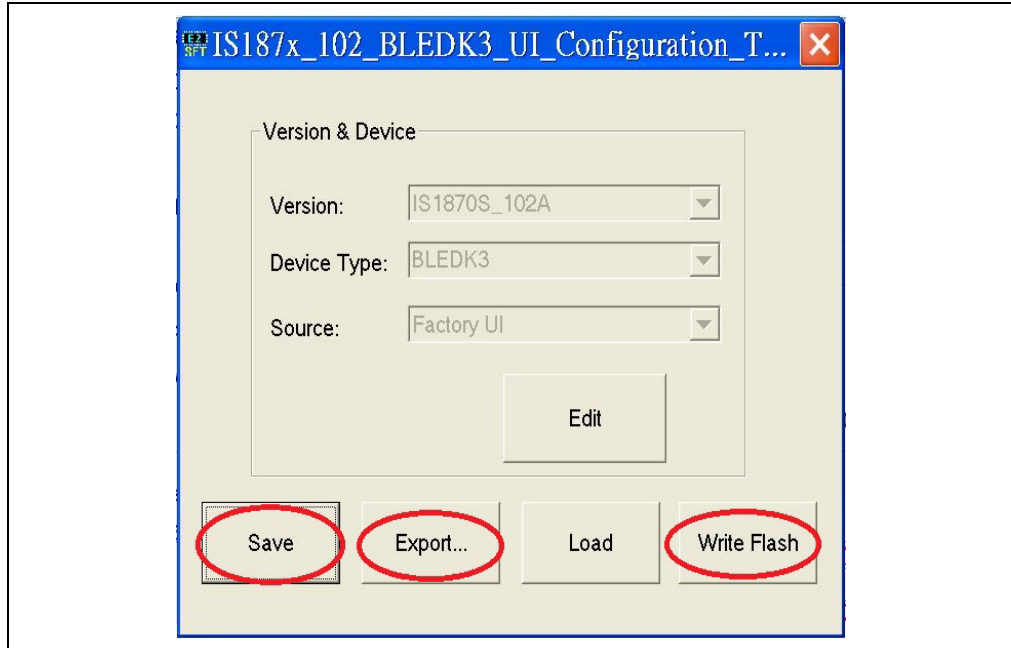


- Select required information and then click **Finish**. Firmware UI Configuration window will be displayed.

BM70 EVB User's Guide

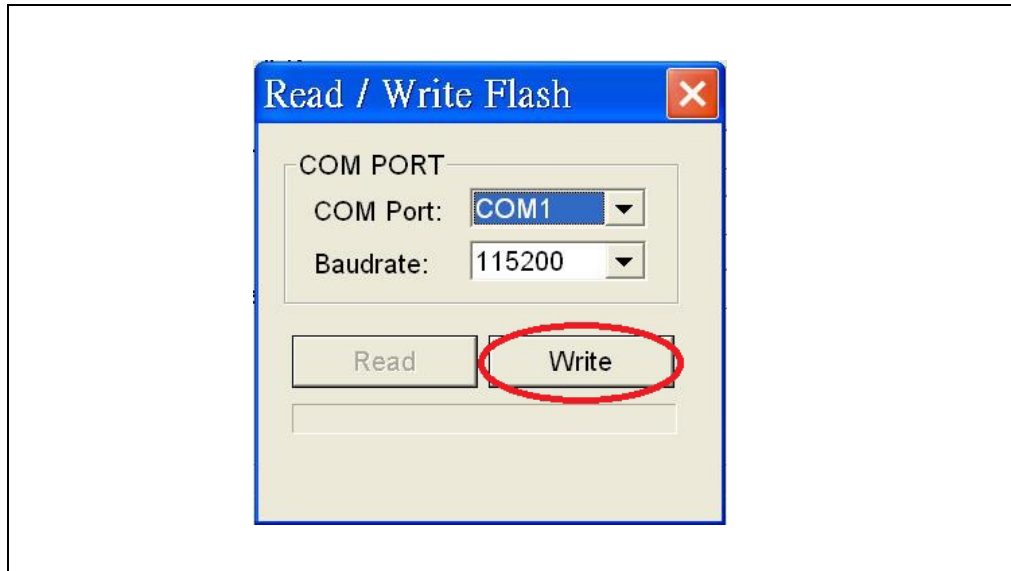
7. From the UI configuration window, users can perform any one these actions:
 - Click **Save** to save the selected UI parameters as .txt and .hex files for mass production.
 - Click **Export** to export the UI log .txt file.
 - Click **Write Flash** to download UI parameters to Flash.

FIGURE 4-6: SELECT VERSION AND DEVICE



8. Click **Write Flash**, the Read/Write Flash window will be displayed.

FIGURE 4-7: DOWNLOAD UI PARAMETERS



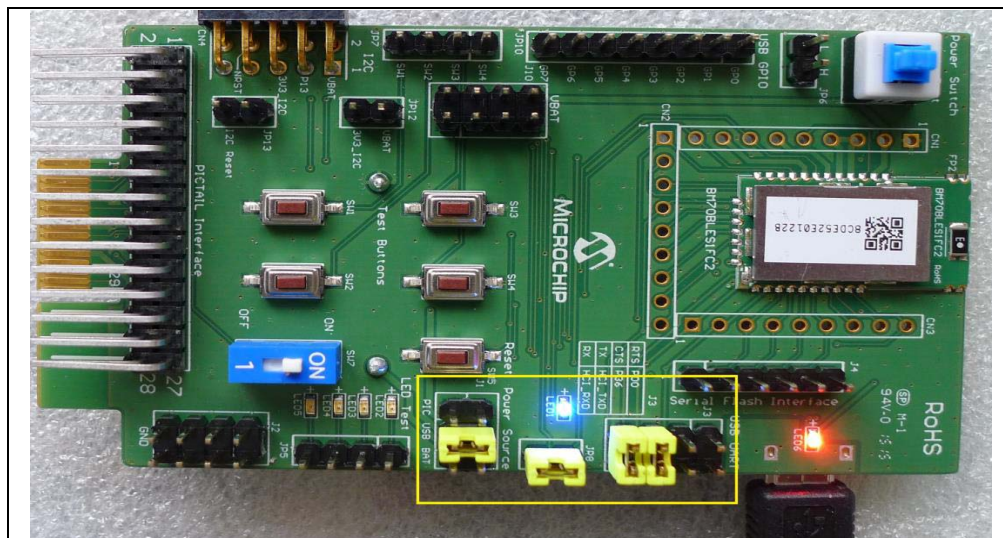
9. Click **Write** to download UI parameters to Flash.

4.2 DOWNLOADING UI PARAMETERS

To download UI parameters, perform the following actions:

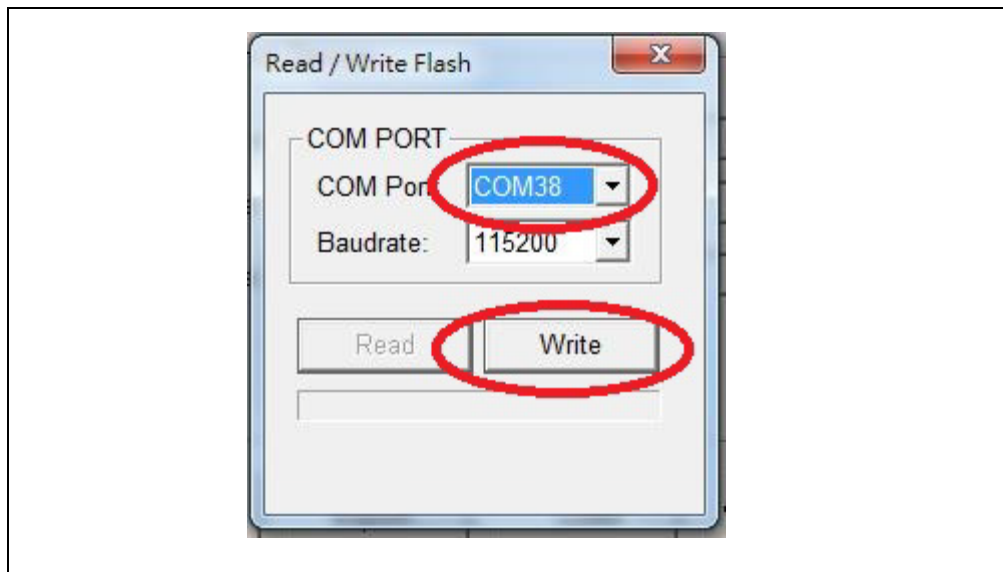
1. Set the switch SW7 to ON (Test mode), see [Figure 3-1](#).
2. Connect the BM70 EVB board to a PC using the micro-USB cable, see [Figure 3-2](#).
3. Ensure that the jumpers on the J1, J8 and J3 are connected. Connect the USB port of the EVB P1 and PC using the micro-USB cable.
4. On connection, the LED1 (blue) on the BM70 EVB board will starts glowing.

FIGURE 4-8: JUMPER CONNECTION



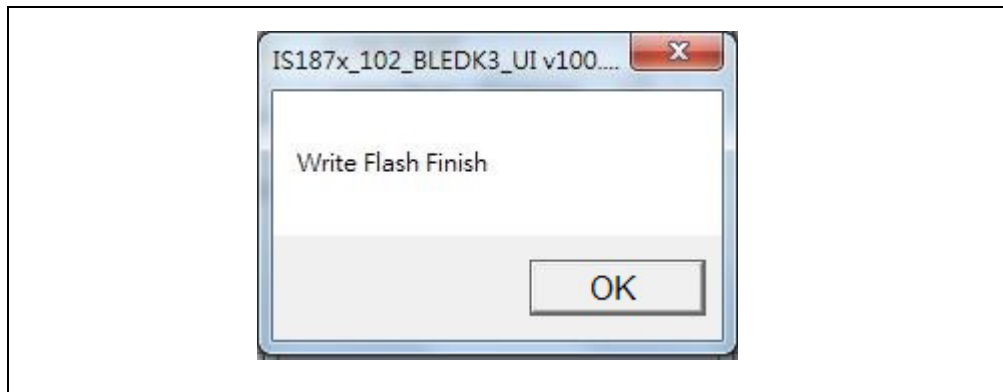
5. To download the edited UI parameters from the Read/Write Flash window, choose the COM port and baud rate values, and then click **Write**.

FIGURE 4-9: READ/WRITE PAGE



6. On completion, the Write Flash window is displayed.
7. Click **OK** to download UI parameters.

FIGURE 4-10: WRITE FLASH FINISH WINDOW



Chapter 5. UART Command Tool Environment Setting

This chapter describes how to set up the UART command tool environment using the BLEDK3 Auto Pattern Test Tool and BLEDK3 Manual Test Tool.

The following topics included in this chapter:

[Section 5.1 “Auto-Pattern Test Tool SET UP”](#)

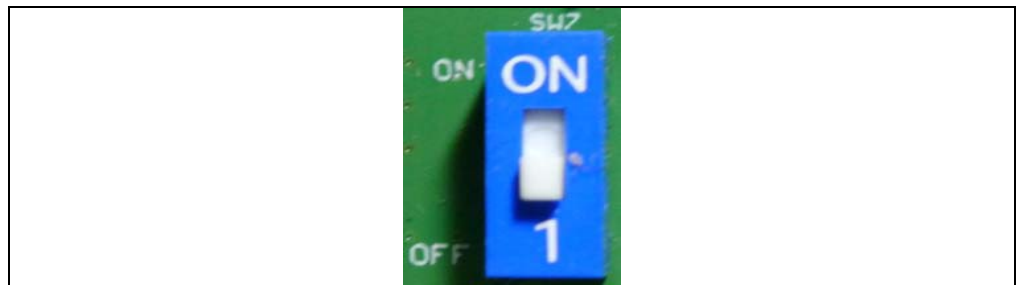
[Section 5.2 “Manual Test Tool”](#)

5.1 AUTO-PATTERN TEST TOOL SET UP

To set up the Auto Pattern Test Tool, perform the following actions:

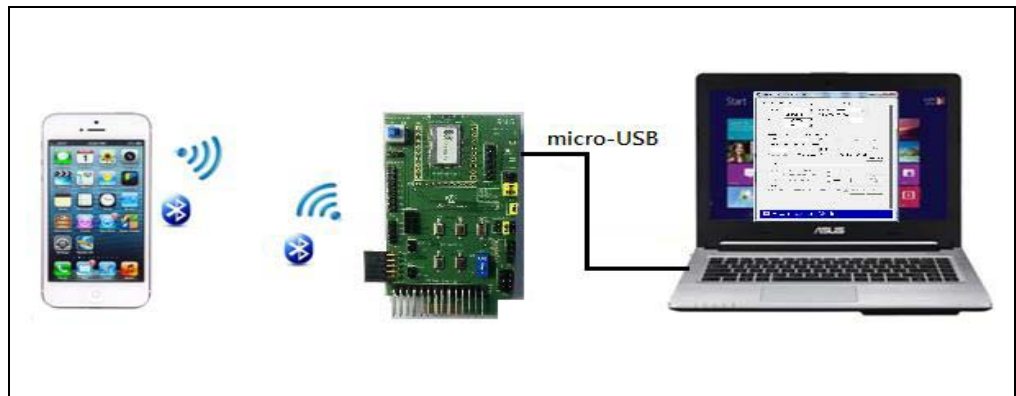
1. Set the switch SW7 to OFF (Application mode).

FIGURE 5-1: SW7 IS OFF: APPLICATION MODE



2. Connect the BM70 EVB to a PC using the micro-USB cable and make a connection to the BLEDK3 application using a smart phone.

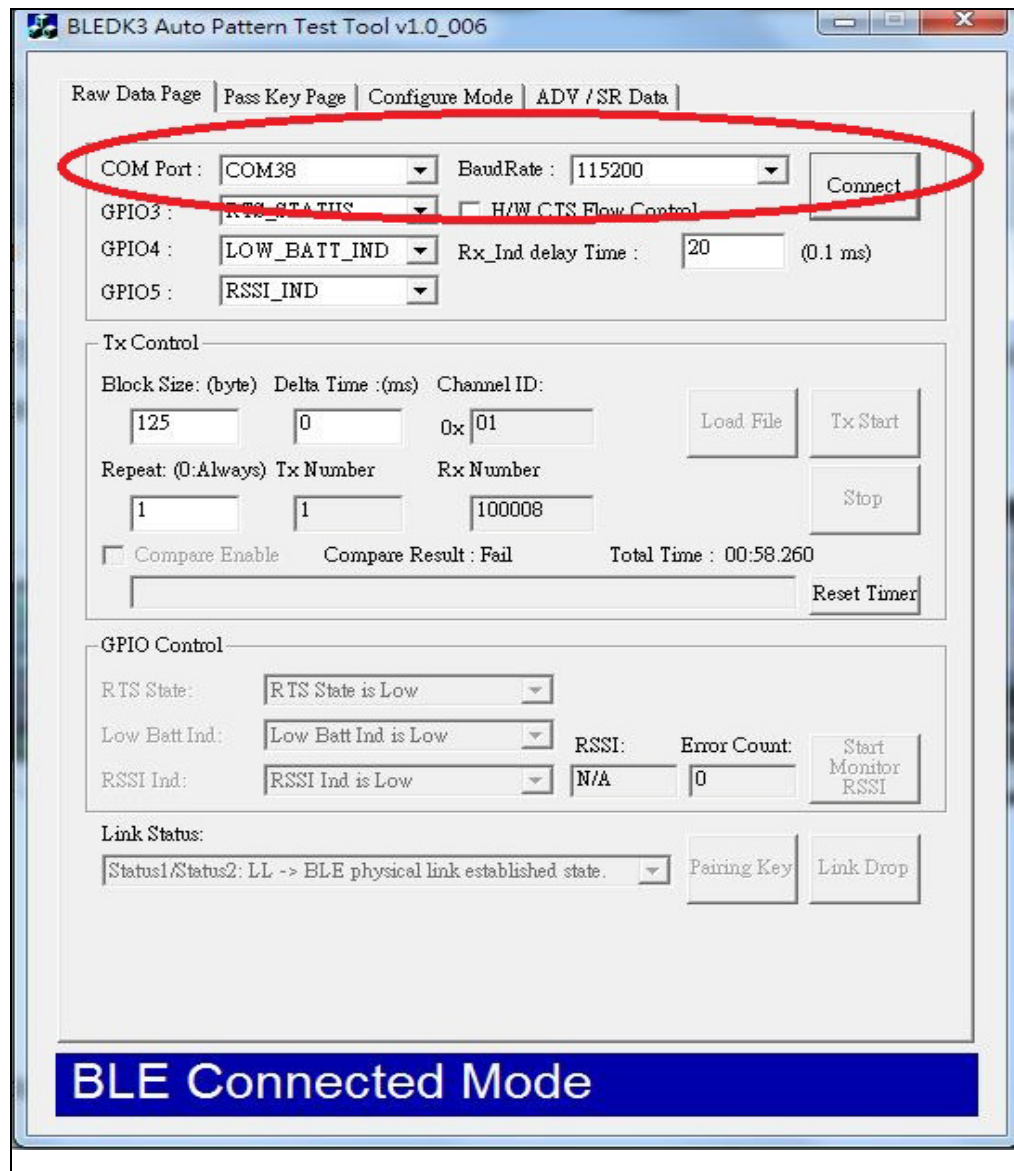
FIGURE 5-2: AUTO-PATTERN TEST SETUP



BM70 EVB User's Guide

3. Open the Auto Pattern Test Tool in the PC.
4. Set up the COM Port and Baud Rate by selecting the appropriate values, and then click **Connect** to establish the connection with the device.

FIGURE 5-3: BLEDK3 AUTO PATTERN TEST TOOL



5. The Auto Pattern Test functions are performed by the tool to control the BM70 module. Refer to the "*BM70 BLEDK3 Application Note*" for additional information.

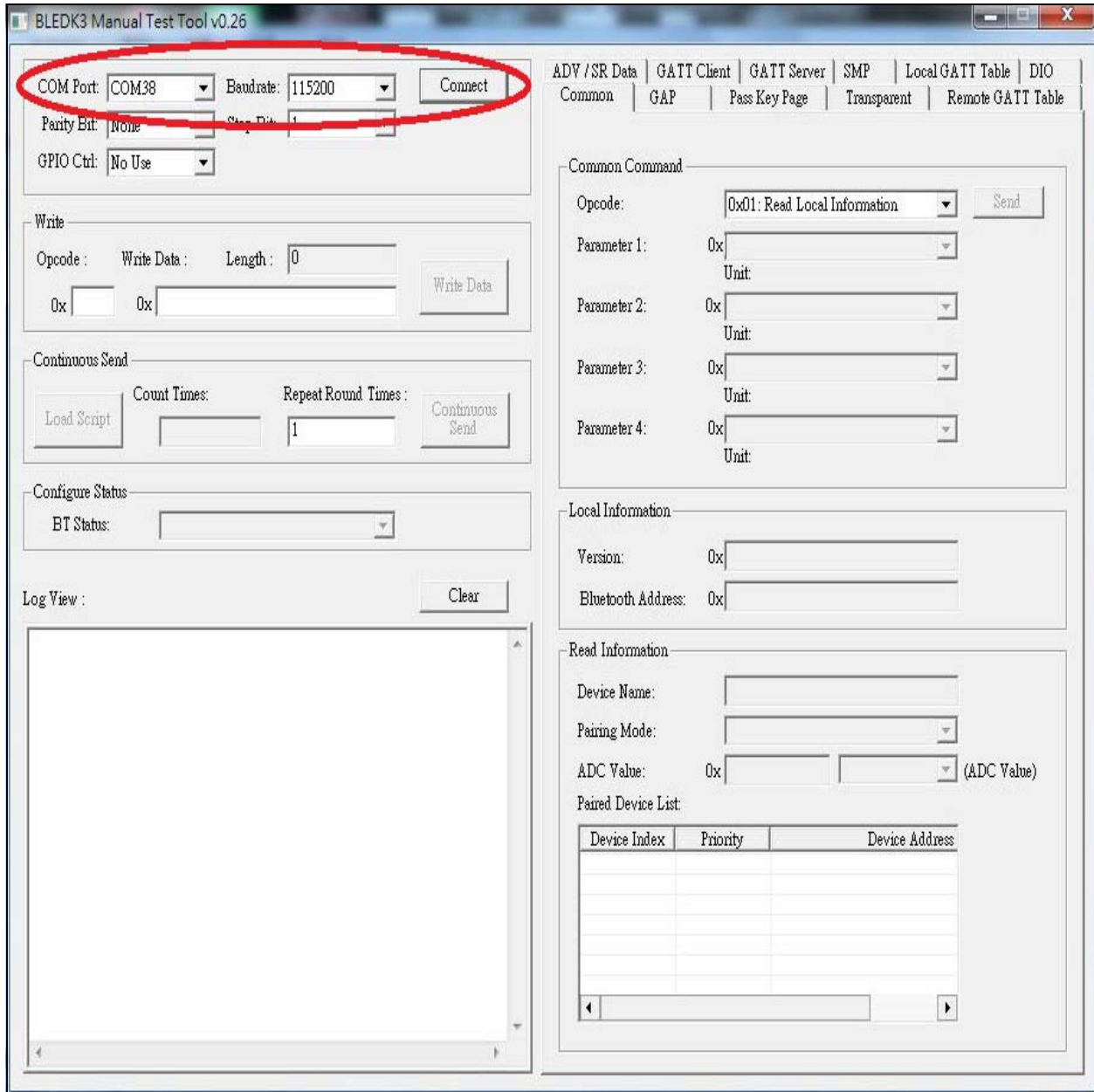
UART Command Tool Environment Setting

5.2 MANUAL TEST TOOL

To set up the Manual Test Tool, perform the following actions:

1. Set the switch SW7 to OFF (Application mode), see [Figure 5-1](#).
2. Connect the BM70 Evaluation board to a PC using the micro-USB cable, and make a connection to the BLEDK3 application using a smart phone, see [Figure 5-2](#).
3. Set up the COM Port and Baud Rate, and then click **Connect** to establish the connection with the device.

FIGURE 5-4: BLEDK3 MANUAL PATTERN TEST TOOL



4. Perform the Manual Test Tool functions to control the BM70 module. Refer to the “*BM70 BLEDK3 Application Note*” for additional information.

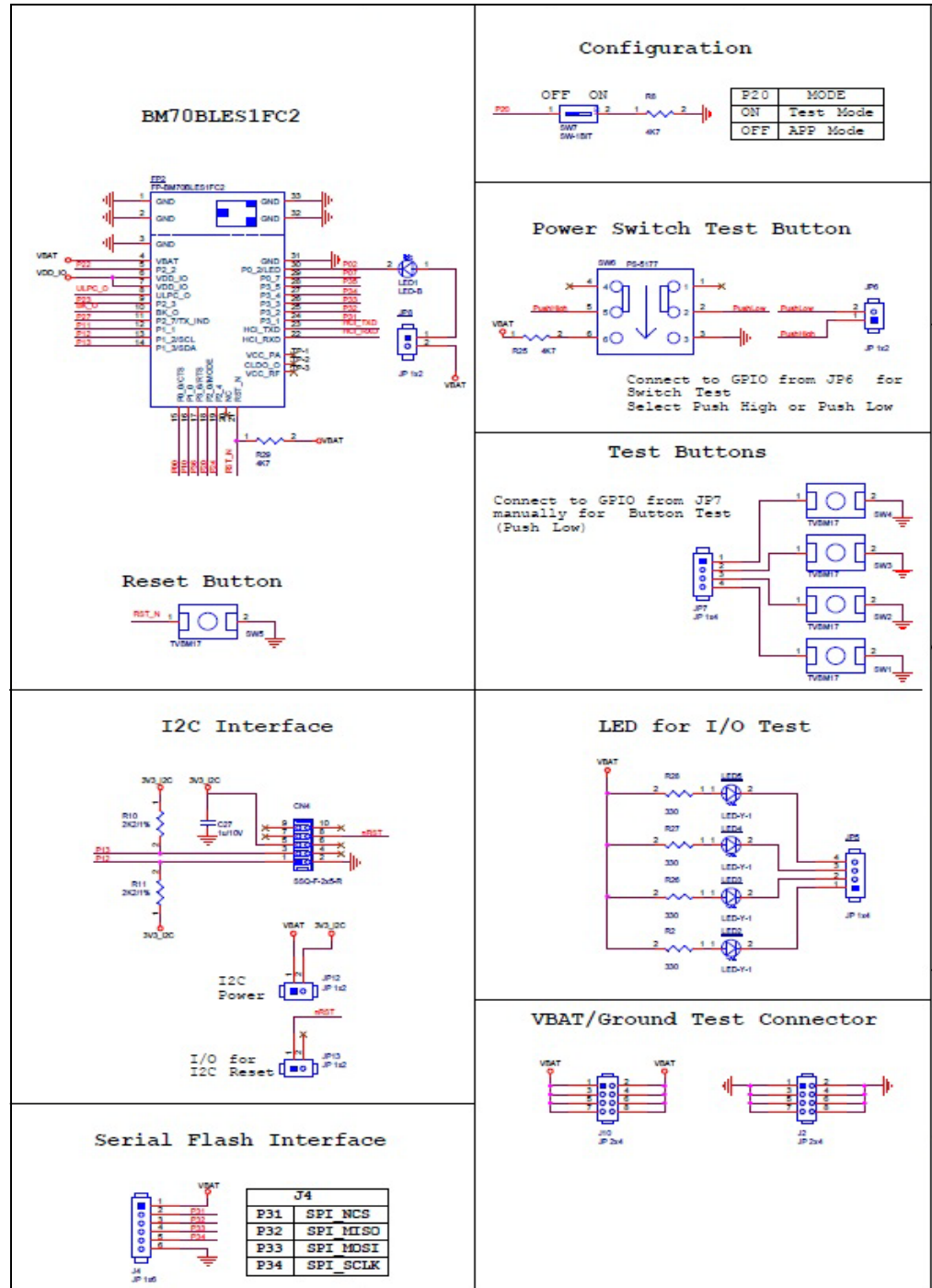
BM70 EVB User's Guide

NOTES:

Appendix A. Schematics

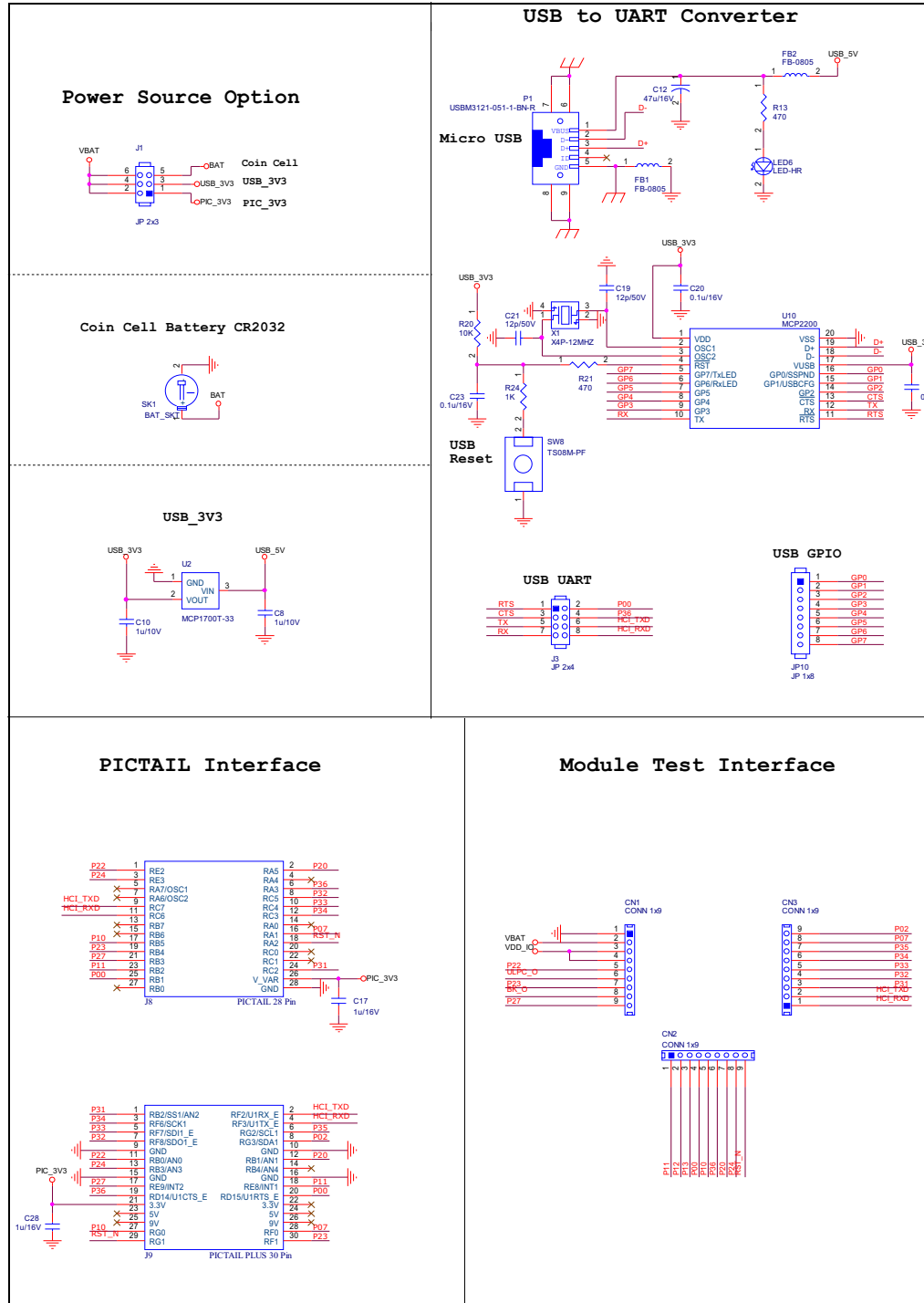
A.1 BLOCK DIAGRAM

FIGURE A-1: BM70 EVB SCHEMATICS



BM70 EVB User's Guide

FIGURE A-2: BM70 EVB SCHEMATIC



NOTES:



MICROCHIP

Worldwide Sales and Service

AMERICAS

Corporate Office
2355 West Chandler Blvd.
Chandler, AZ 85224-6199
Tel: 480-792-7200
Fax: 480-792-7277
Technical Support:
<http://www.microchip.com/support>
Web Address:
www.microchip.com

Atlanta
Duluth, GA
Tel: 678-957-9614
Fax: 678-957-1455

Austin, TX
Tel: 512-257-3370

Boston
Westborough, MA
Tel: 774-760-0087
Fax: 774-760-0088

Chicago
Itasca, IL
Tel: 630-285-0071
Fax: 630-285-0075

Cleveland
Independence, OH
Tel: 216-447-0464
Fax: 216-447-0643

Dallas
Addison, TX
Tel: 972-818-7423
Fax: 972-818-2924

Detroit
Novi, MI
Tel: 248-848-4000

Houston, TX
Tel: 281-894-5983

Indianapolis
Noblesville, IN
Tel: 317-773-8323
Fax: 317-773-5453

Los Angeles
Mission Viejo, CA
Tel: 949-462-9523
Fax: 949-462-9608

New York, NY
Tel: 631-435-6000

San Jose, CA
Tel: 408-735-9110

Canada - Toronto
Tel: 905-673-0699
Fax: 905-673-6509

ASIA/PACIFIC

Asia Pacific Office
Suites 3707-14, 37th Floor
Tower 6, The Gateway
Harbour City, Kowloon

Hong Kong
Tel: 852-2943-5100
Fax: 852-2401-3431

Australia - Sydney
Tel: 61-2-9868-6733
Fax: 61-2-9868-6755

China - Beijing
Tel: 86-10-8569-7000
Fax: 86-10-8528-2104

China - Chengdu
Tel: 86-28-8665-5511
Fax: 86-28-8665-7889

China - Chongqing
Tel: 86-23-8980-9588
Fax: 86-23-8980-9500

China - Dongguan
Tel: 86-769-8702-9880

China - Hangzhou
Tel: 86-571-8792-8115
Fax: 86-571-8792-8116

China - Hong Kong SAR
Tel: 852-2943-5100
Fax: 852-2401-3431

China - Nanjing
Tel: 86-25-8473-2460
Fax: 86-25-8473-2470

China - Qingdao
Tel: 86-532-8502-7355
Fax: 86-532-8502-7205

China - Shanghai
Tel: 86-21-5407-5533
Fax: 86-21-5407-5066

China - Shenyang
Tel: 86-24-2334-2829
Fax: 86-24-2334-2393

China - Shenzhen
Tel: 86-755-8864-2200
Fax: 86-755-8203-1760

China - Wuhan
Tel: 86-27-5980-5300
Fax: 86-27-5980-5118

China - Xian
Tel: 86-29-8833-7252
Fax: 86-29-8833-7256

ASIA/PACIFIC

China - Xiamen
Tel: 86-592-2388138
Fax: 86-592-2388130

China - Zhuhai
Tel: 86-756-3210040
Fax: 86-756-3210049

India - Bangalore
Tel: 91-80-3090-4444
Fax: 91-80-3090-4123

India - New Delhi
Tel: 91-11-4160-8631
Fax: 91-11-4160-8632

India - Pune
Tel: 91-20-3019-1500

Japan - Osaka
Tel: 81-6-6152-7160
Fax: 81-6-6152-9310

Japan - Tokyo
Tel: 81-3-6880-3770
Fax: 81-3-6880-3771

Korea - Daegu
Tel: 82-53-744-4301
Fax: 82-53-744-4302

Korea - Seoul
Tel: 82-2-554-7200
Fax: 82-2-558-5932 or
82-2-558-5934

Malaysia - Kuala Lumpur
Tel: 60-3-6201-9857
Fax: 60-3-6201-9859

Malaysia - Penang
Tel: 60-4-227-8870
Fax: 60-4-227-4068

Philippines - Manila
Tel: 63-2-634-9065
Fax: 63-2-634-9069

Singapore
Tel: 65-6334-8870
Fax: 65-6334-8850

Taiwan - Hsin Chu
Tel: 886-3-5778-366
Fax: 886-3-5770-955

Taiwan - Kaohsiung
Tel: 886-7-213-7828

Taiwan - Taipei
Tel: 886-2-2508-8600
Fax: 886-2-2508-0102

Thailand - Bangkok
Tel: 66-2-694-1351
Fax: 66-2-694-1350

EUROPE

Austria - Wels
Tel: 43-7242-2244-39
Fax: 43-7242-2244-393

Denmark - Copenhagen
Tel: 45-4450-2828
Fax: 45-4485-2829

France - Paris
Tel: 33-1-69-53-63-20
Fax: 33-1-69-30-90-79

Germany - Dusseldorf
Tel: 49-2129-3766400

Germany - Karlsruhe
Tel: 49-721-625370

Germany - Munich
Tel: 49-89-627-144-0
Fax: 49-89-627-144-44

Italy - Milan
Tel: 39-0331-742611
Fax: 39-0331-466781

Italy - Venice
Tel: 39-049-7625286

Netherlands - Druen
Tel: 31-416-690399
Fax: 31-416-690340

Poland - Warsaw
Tel: 48-22-3325737

Spain - Madrid
Tel: 34-91-708-08-90
Fax: 34-91-708-08-91

Sweden - Stockholm
Tel: 46-8-5090-4654

UK - Wokingham
Tel: 44-118-921-5800
Fax: 44-118-921-5820

07/14/15