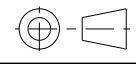
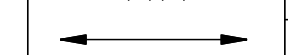
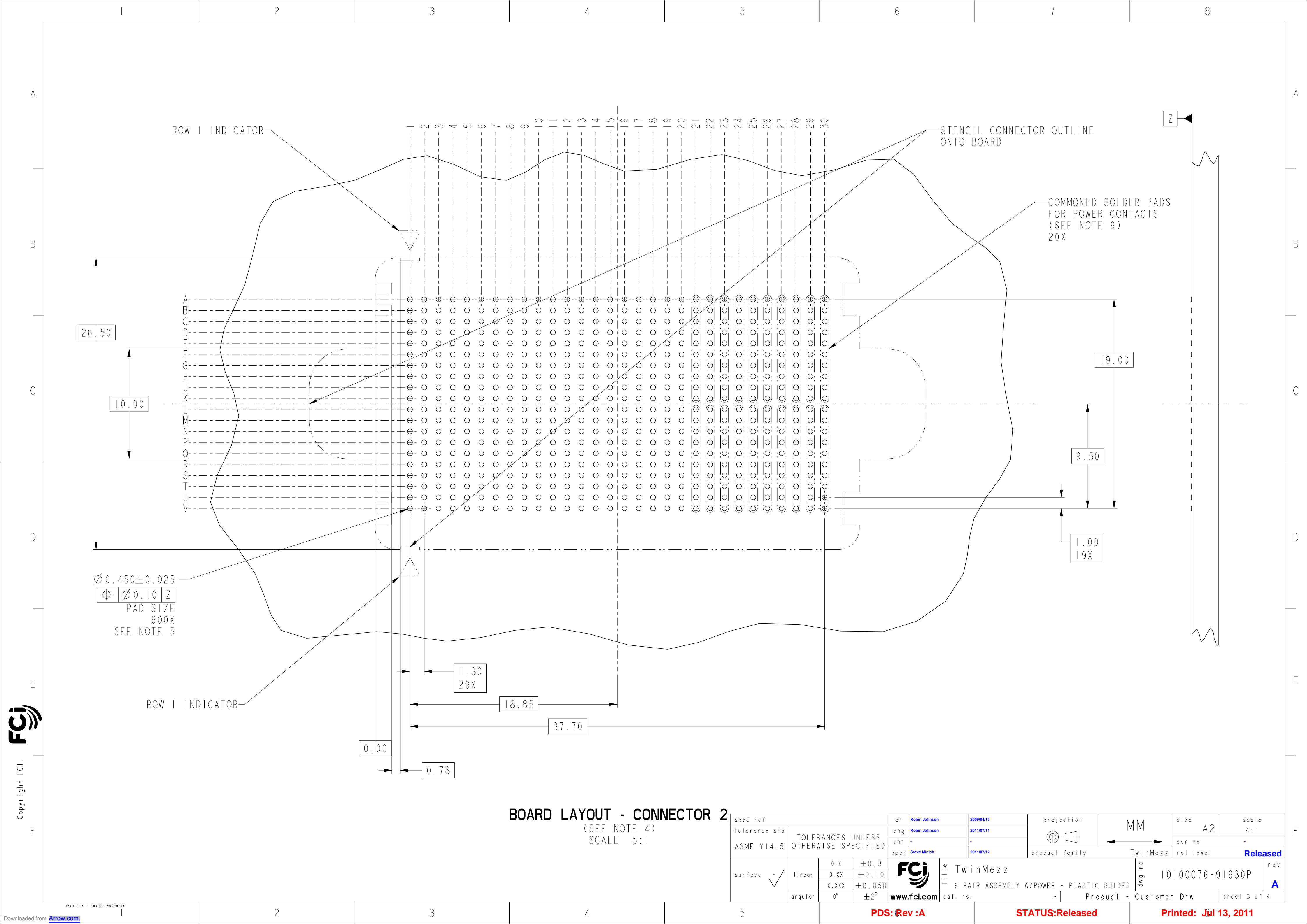


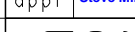


BOARD LAYOUT - CONNECTOR 1
(SEE NOTE 4)
SCALE 5:1

spec ref				dr		Robin Johnson		2009/04/15		projection		MM		size		A2		scale		4:1			
tolerance std				eng		Robin Johnson		2011/07/11						ecn no		-		rel level		Released			
ASME Y14.5				chr		-		-															
				appr		Steve Minich		2011/07/12														product family	
TOLERANCES UNLESS OTHERWISE SPECIFIED																							
				surface		- / ✓		linear		0.X ±0.3		FCI		title		TwinMezz		dwg no		10100076-91930P		rev	
								0.XX ±0.10						6 PAIR ASSEMBLY W/POWER - PLASTIC GUIDES								A	
								0.XXX ±0.050															
								angular		0° ±2°		www.fci.com		cat. no.		-		Product - Customer Drw				sheet 2 of 4	



BOARD LAYOUT - CONNECTOR 2
(SEE NOTE 4)
SCALE 5:1

spec ref		dr		Robin Johnson	2009/04/15	<div>projection</div> <div></div> <div>MM</div> <div></div>	size	A2	scale	4:1		
tolerance std		eng		Robin Johnson	2011/07/11		ecn no	-				
ASME Y14.5		chr		-	-							
		appr		Steve Minich	2011/07/12		product family		TwinMezz		rel level	Released
surface	<div>✓</div>	linear	0.X	±0.3	<div></div>	title	TwinMezz	dwg no	10100076-91930P		rev	A
			0.XX	±0.10								
			0.XXX	±0.050								
		angular	0°	±2°								

1		2	3	4	5	6	7	8
PRODUCT NUMBER	SOLDER BALL							
10100076-91930P	SnPb							
10100076-91930PLF	SnAgCu LEADFREE ⑦							

NOTES:

I. MATERIAL:
HOUSING: HIGH TEMPERATURE THERMOPLASTIC
UL RATING: 94 V-0

PICK-UP CAP: HIGH TEMPERATURE THERMOPLASTIC
UL RATING: 94 V-0

CONTACT: COPPER ALLOY

PLATING (CONTACT): PERFORMANCE BASED, CAPABLE OF MEETING THE
REQUIREMENTS OF FCI PRODUCT SPECIFICATION GS-12-558

SOLDER BALL: (SEE TABLE) EUTECTIC SnPb OR LEADFREE 95.5 Sn/4Ag/0.5Cu

② SOLDER BALLS WILL NOT BE A PERFECT SPHERICAL SHAPE DUE TO REFLOW ATTACHMENT.

③ DUE TO THE HERMAPHRODITIC DESIGN OF THIS CONNECTOR, A ROW 1 POSITION MARKER WILL BE LASER MARKED ONTO BOTH SIDES OF THE CONNECTOR HOUSING FOR ORIENTATION.

④ DUE TO THE HERMAPHRODITIC DESIGN OF THIS CONNECTOR, TWO BOARD LAYOUTS HAVE BEEN GIVEN AS EXAMPLES TO SHOW THE PIN NUMBERING DESIGNATIONS FOR CONNECTOR NUMBER 1 AND MATING CONNECTOR NUMBER 2.

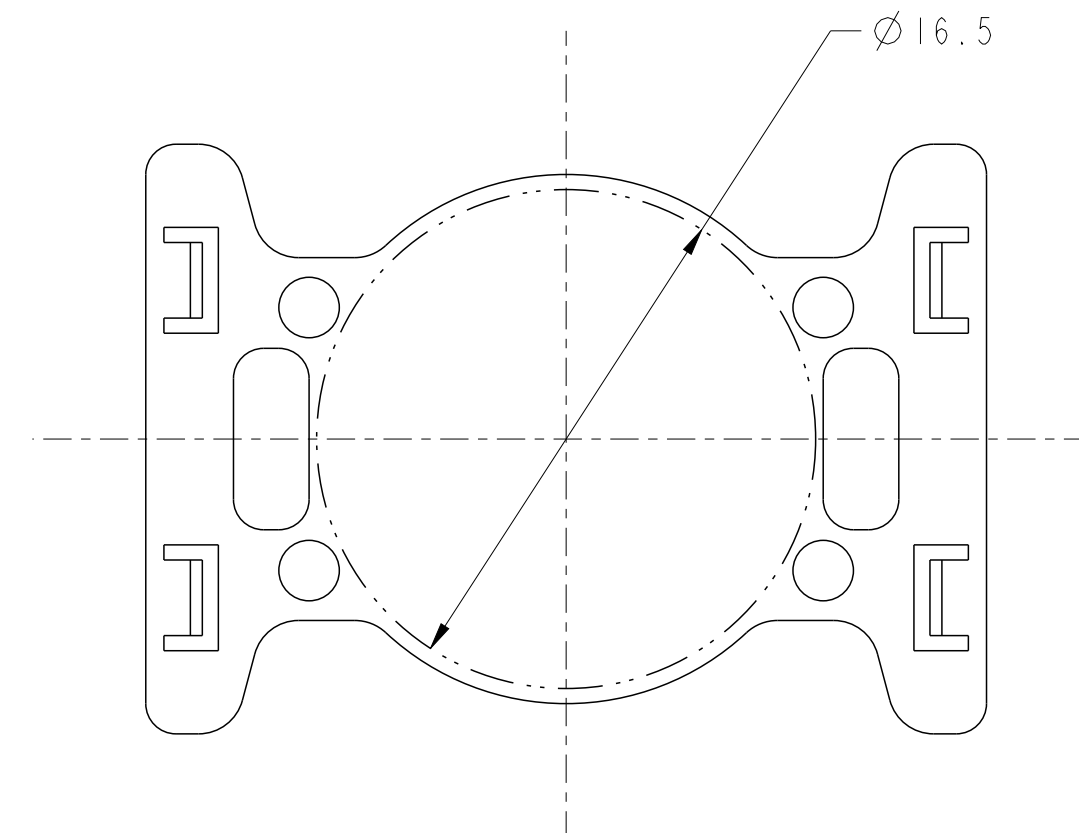
⑤ SPECIFIED POSITIONAL TOLERANCE DEFINES PAD TO PAD LOCATION WITHIN LAND PATTERN. POSITIONAL TOLERANCE OF LAND PATTERN TO FUDICIAL MARKS OR PCB DATUMS SHALL BE DEFINED BY CUSTOMER. FOR RECOMMENDED PRODUCT APPLICATION AND PCB DESIGN DETAILS, SEE DOC. NO. GS-20-108.

6. PRODUCT SPECIFICATION: GS-12-558
APPLICATION SPECIFICATION: GS-20-108

⑦ THIS PRODUCT MEETS THE EUROPEAN UNION DIRECTIVES AND OTHER COUNTRY REGULATIONS AS DESCRIBED IN GS-22-008. PRODUCT MEETING WITH THIS DIRECTIVE IS IDENTIFIED IN THE LOT CODE NUMBER MARKED ON EACH PART BY HAVING AN "X" IN THE SEVENTH CHARACTER POSITION.

8. THE HOUSING WILL WITHSTAND EXPOSURE TO 260°C PEAK TEMPERATURE FOR 40 SECONDS IN A CONVECTION, INFRA-RED OR VAPOR PHASE REFLOW OVEN.

⑨ POSITIONS "A" THRU "K" AND POSITIONS "L" THRU "V" ARE TO BE COMMONED TOGETHER FOR POWER CONTACTS LOCATED IN ROWS 21 THRU 30.







FLAT AREA PICK-UP CAP
SCALE 4:1

IMLA LOADING TABLE

[illegible]

IMLA TYPES:

S = SIGNAL IMLA
P = POWER IMLA

spec ref				dr	Robin Johnson	2009/04/15	<div>projection</div> <div></div>	<div>MM</div> <div></div>	size	A2	scale	4:1
tolerance std	TOLERANCES UNLESS OTHERWISE SPECIFIED		eng	Robin Johnson	2011/07/11	ecn no			-			
ASME Y14.5			chr	-	-	product family			TwinMezz			
				appr	Steve Minich	2011/07/12				Released		
surface <div></div>	linear	0.X	±0.3		title	TwinMezz			dwg no	10100076-91930P		rev
		0.XXX	±0.10									
		0.XXX	±0.050									
		angular	0°	±2°	www.fci.com	cat. no.	-	Product - Customer Drw			sheet 4 of 4	