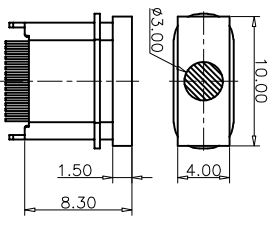
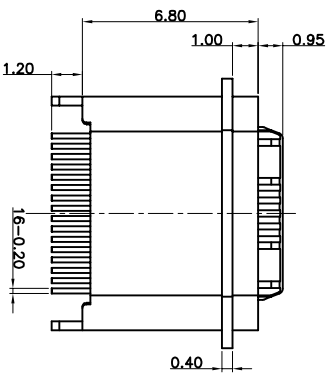
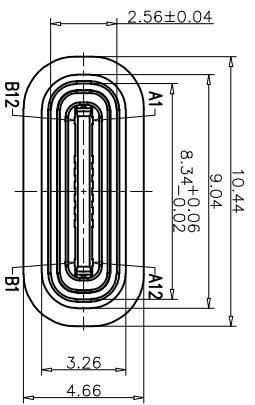


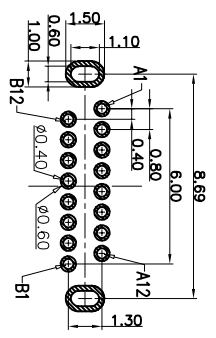


CUSTOMER

REV.	ECN NO.	DESCRIPTION	DATE	DESIGN

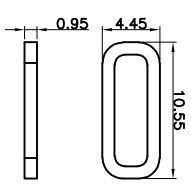
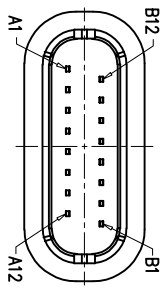
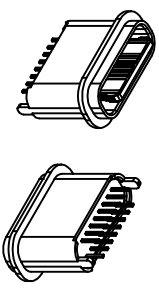
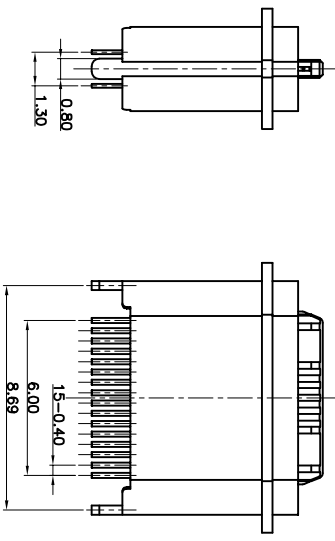


装前塞示意图



RECOMMEND P.C.B LAYOUT  
TOLERANCE UNSPECIFIED ±0.05mm

- NOTES:
- SPECIFICATION:
1. CURRENT RATING: 3.0 A
  2. VOLTAGE RATING: 3.0 V
  3. VBUS & GND PINS AND OTHER PINS: 40m/PIN MAX SHIELD: 50mΩ/MAX LCR MAX: CHANGE OF ALL PINS: 100m
  4. INSULATION RESISTANCE: 100MΩ MIN
  5. DIELECTRIC WITHSTAND VOLTAGE AC 100V FOR 1MINUTE
  6. INSERTION FORCE: 0.5~2.0kgf
  7. UNMATING FORCE: 0.8~2.0kgf
  8. DURABILITY: 10000 CYCLES
  9. OPERATING TEMPERATURE: -35°C~+85°C
  10. THE PEAK TEMPERATURE ON THE BOARD SHALL BE MAINTAINED FOR 10 SECONDS AT 210~230°C
  11. WATERPROOF: IP-X7.



防水圈图示

USB TYPE C PIN ASSIGNMENTS

PIN NUMBER	SIGNAL NAME	PIN NUMBER	SIGNAL NAME	NO	PART	QTY	Material
A1	GND	B12	GND	1	SHELL	1	ZINC ALLOY/NI30U <sup>2</sup> MIN PLATED
A4	VBUS	B9	VBUS	2	CONTACT	16	C7025,TIN80U <sup>2</sup> /AU3U <sup>2</sup> /NI30U <sup>2</sup> PLATED
A5	CC1	B8	SBU2	3	MID PLATE	1	SUS301,NO PLATING
A6	DP1	B7	DN2	4	HOUSING	1	LCP(E130) UL94 V-0 BLACK
A7	DN1	B6	CC2	5	CAP	1	UL94 V-0 BLACK
A8	SBU1	B5	CC2	6	WATERPROOF RING	1	SILICONE(SI/50-65A) UL94 V-0 BLACK
A9	VBUS	B4	VBUS				
A12	GND	B1	GND				

TOLERANCE

NAME:(INTENDED USE)

CUSTOMER DRAWING

X.X	±0.30	X:	±10°	PART NO.	TITLE:	
.XX	±0.20	.X:	± 8°	FY23-0107C161F368-02	TYPE C 16P防水母座立插6. 8H	
.XXX	±0.10	.XX:	± 5°	DESIGN: ZXM	DRAWG NO.	FY23-0107C161F368-01
UNITS	mm				SCALE	1:1
MATERILA	---				SHEET	1/2
FINISH	---			APPD:	REV.	A

