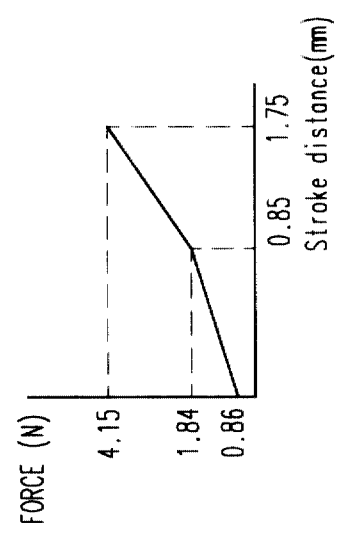
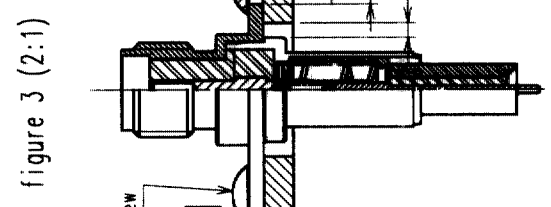
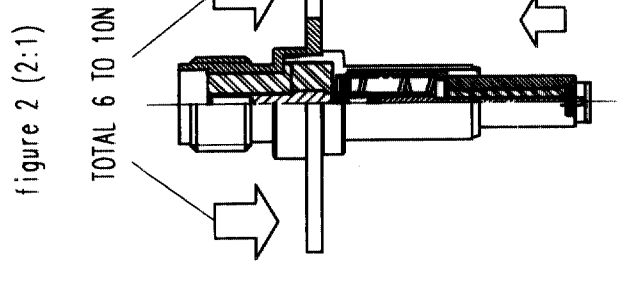
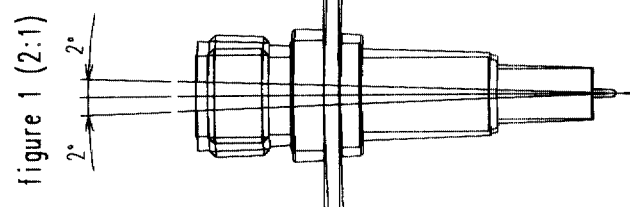
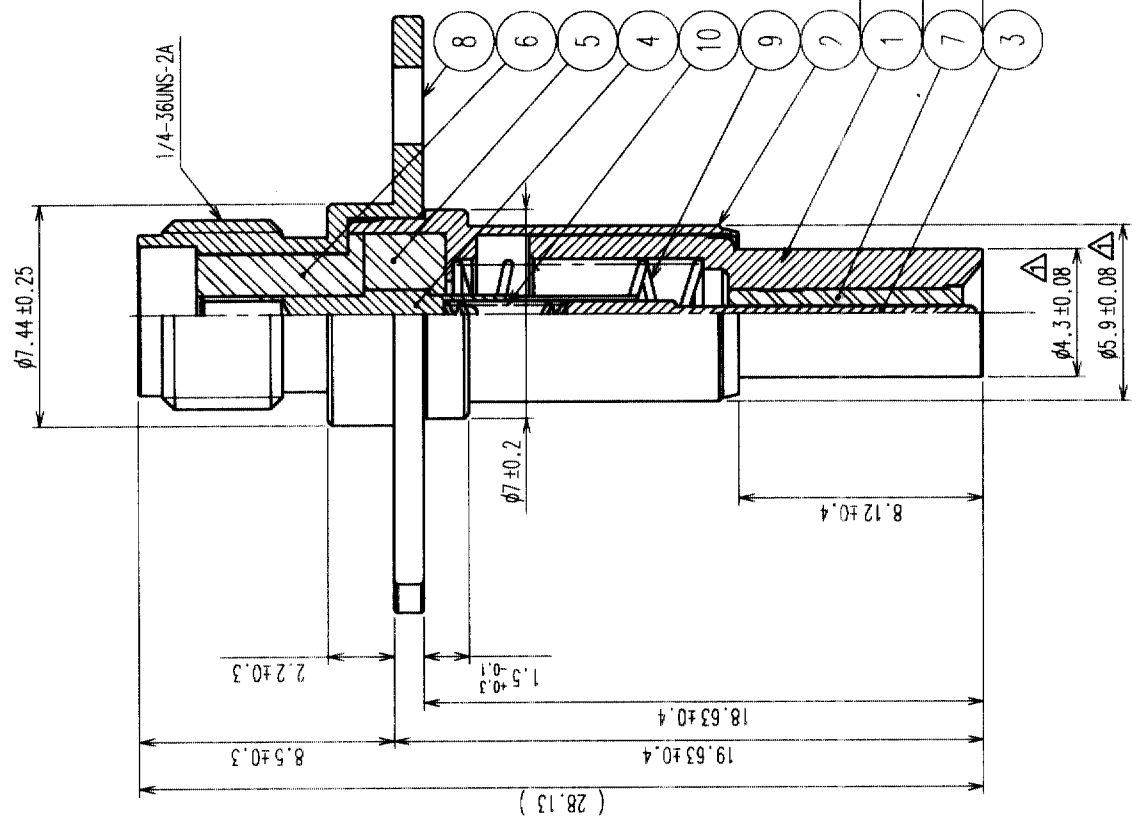
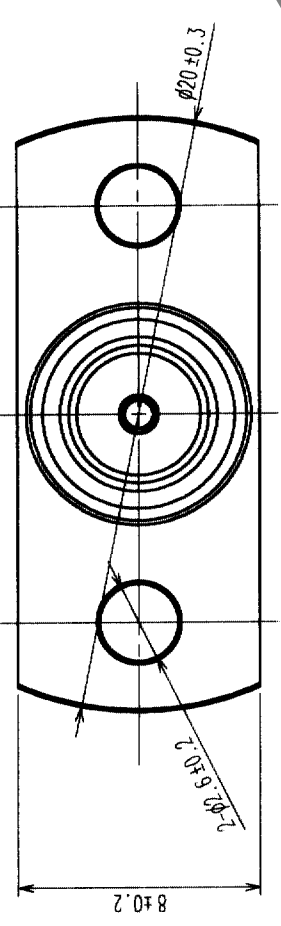


COUNT	DESCRIPTION OF REVISIONS	BY	CHKD	DATE	COUNT	DESCRIPTION OF REVISIONS	BY	CHKD	DATE
2	RE-J-01958	K.HIDA	K.K.	02.11.25					



MATED CONDITION

NO.	MATERIAL	FINISH	REMARKS	NO.	MATERIAL	FINISH	REMARKS
5	PIFE			10	STAINLESS	GOLD	
4	BERYLLIUM COPPER	GOLD		9	STAINLESS		
3	BERYLLIUM COPPER	GOLD		8	STAINLESS	PASSIVATE	
2	BERYLLIUM COPPER	GOLD		7	PIFE		
1	BERYLLIUM COPPER	GOLD		6	PIFE		

- NOTE 1. This adaptor must be pushed on the receptacle (MS-156) with 6 to 10N. (refer to figure 2)
 2. Mating angle must be less than ±2 degree. (refer to figure 1)
 3. This product should not be fixed completely so that it keep space to align for connection. If your jig have alignment structure, it is not needed.
 4. Recommended setting configuration is shown in figure 3.

TO	
RFD	

DRAWING NO.	EDC3-180317	PART NO.	MS-156-HRMJ-6
SCALE	4 : 1	CODE NO.	CL358-0181-9
UNITS	MM		

DESIGNED	K.HIDA	APPROVED	Y.MIYAKE
CHECKED	K.KAWAMURA	RELEASED	
DRAWN	K.HIDA		
	'02.11.1		'02.11.5