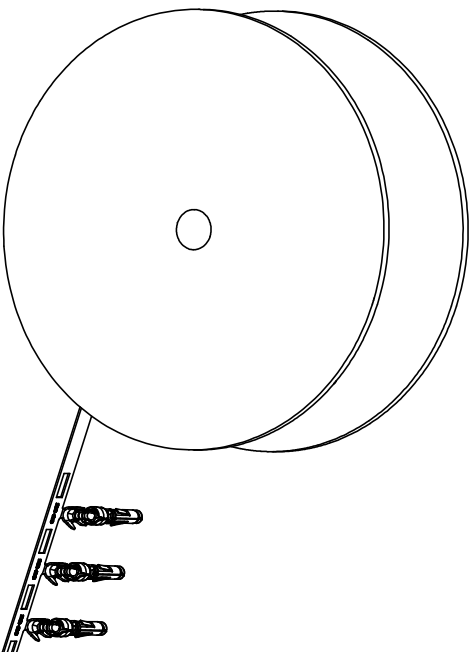


REVISIONS				
REV	ECO	DESCRIPTION	DATE	BY APPR
A1	-	RELEASED DRAWING	Nov-9-17	Rookie Tommy
A2	-	ADD THE GS PART NUMBER	Jan-28-19	Blink Tommy
A3	-	CHANGE HAND CRIMPER	Nov-8-19	Flan Tommy

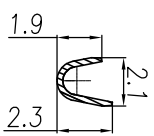
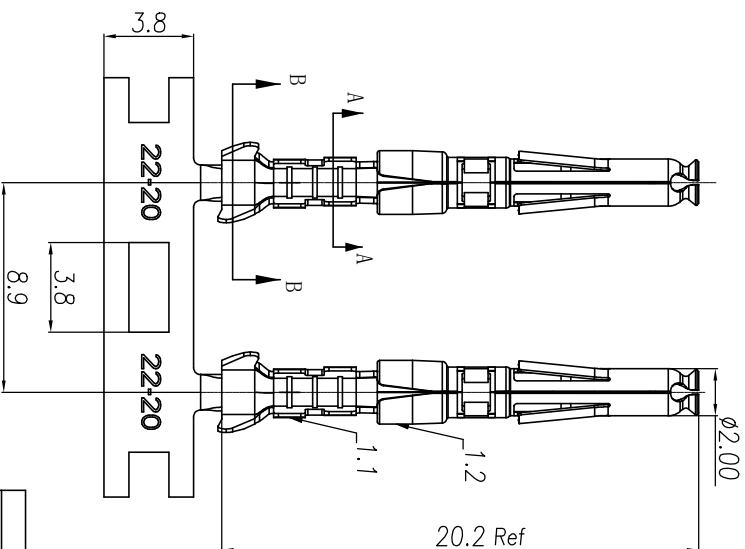
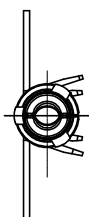


CONTACT ORIENTATION ON ROLL

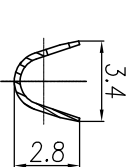
NOTES: (UNLESS OTHERWISE SPECIFIED)

- MATERIAL:
  - CONTACT BODY: COPPER ALLOY.
  - OUTER SPRING: STAINLESS STEEL.
- SPECIFICATIONS:
  - CURRENT RATING: 5A MAX.
  - TERMINATION TYPE: CRIMPING.
  - WIRE RANGE: 22~20AWG.
  - WIRE INSULATION DIA(MAX):  $\varnothing 2.6\text{mm}$ .
- RHS COMPLIANT.
- ALL DIMENSIONS ARE FOR REFERENCE USE ONLY.
- AVAILABLE TOOLS:
  - HAND CRIMPER: MFX-3958. <sup>(A3)</sup>
  - CRIMP APPLICATOR: MFX-3957.
  - EXTRACTION TOOL: QXRT20.

P/N	CONTACT PLATING(MATING AREA)
SS20W2T	TIN PLATING OVER NICKEL.
SS20W2N	NICKEL PLATING OVER COPPERIZE.
SS20W2F	GOLD FLASH PLATING OVER NICKEL.
SS20W2G5	5 $\mu$ " GOLD PLATING OVER NICKEL.
SS20W2G10	10 $\mu$ " GOLD PLATING OVER NICKEL.
SS20W2G15	15 $\mu$ " GOLD PLATING OVER NICKEL.
SS20W2G30	30 $\mu$ " GOLD PLATING OVER NICKEL.



SECTION A-A



SECTION B-B

QUANTITY	PART NUMBER	DESCRIPTION	ITEM

**MATERIALS LIST**

UNLESS OTHERWISE SPECIFIED		
1) All dimensions are in millimeters.	<b>SIGNATURES</b>	<b>DATE</b>
2) Tolerances are as follows:	DRWN: <b>Flan</b>	Nov-8-19
3) Pl. DEC 2019	CHKD: <b>Flan</b>	Nov-8-19
4) Pl. DEC 2019	ENGR: <b>Tommy</b>	Nov-8-19
5) Note reference =	APPRV: <b>Tommy</b>	Nov-8-19
MATERIAL SPECIFICATIONS		
PROCESS SPECIFICATIONS		
NEXT ASBY		

SIZE	TYPE	DWG NO	REVISION
B	C-	SS20W2XX	A3
SCALE: NONE			
SHEET 1 OF 1			

ECO-MATE SOCKET CONTACT,  
STAMPED, 20-22AWG, SIZE 20

**Amphenol**

Sine Systems - www.amphenol-sine.com  
44724 Monty Drive  
Clinton Township, MI 48038