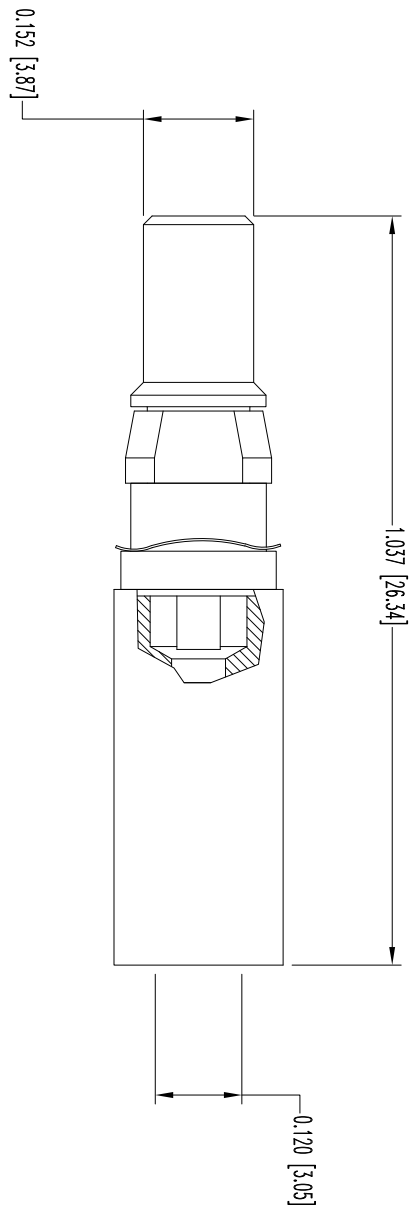


THIS DRAWING CONTAINS INFORMATION PROPRIETARY TO POSITRONIC AND ITS SUBSIDIARIES. POSITRONIC BELIEVES THIS DRAWING IS ORIGINAL WORK AND IS NOT A REPRODUCTION OF TECHNICAL INFORMATION IS GIVEN FREE OF CHARGE. THE USER EMPLOYER'S SUCH INFORMATION AT HIS OWN DISCRETION AND RISK. POSITRONIC ASSUMES NO RESPONSIBILITY FOR ANY ERRORS OR OMISSIONS THAT MAY OCCUR FROM USE OF SUCH INFORMATION IN WHOLE OR IN PART.

DATE	REV	REVISION/RECORD	APP	DR	OK
11-11	NC	ECO 347225	COLE	BE	COLE
10-31	A	ECO 41218	TK	BE	COLE
9-19	B	ECO 52585	COLE	AC	COLE

SK13123



NOTES:

1. MATERIALS AND FINISHES:
CONTACT: PRECISION MACHINED COPPER ALLOY, GOLD FLASH OVER NICKEL
SPRING WASHER: BERYLLIUM COPPER, GOLD FLASH OVER NICKEL.
RETENTION RING: POLYETHERIMIDE, COLOR BLACK.
2. DETAILED PRODUCT, ELECTRICAL, AND MECHANICAL INFORMATION IS AVAILABLE IN THE LATEST STANDARD DENSITY COMBO-D PRODUCT PUBLICATION. VISIT CONNECTPOSITRONIC.COM/PRODUCTS/1/STANDARDENSITYCOMBO-D OR CONNECTPOSITRONIC.COM.
3. CONTACTS ARE COMPLIANT TO THE CURRENT ROHS DIRECTIVE.
4. DIMENSIONS ARE IN INCHES [MILLIMETERS].

		POSITRONIC INDUSTRIES INC. www.connectpositronic.com		FSCM 28198	
DECIMAL TOL. ± 0.015 [0.38]	ANGULAR TOL. $\pm 5^\circ$	CBD SERIES	SCALE N.T.S.	DRAWN BY B. EVANS	APPROVED BY COLE
DATE 11-11-11		DRAWING NUMBER MCC4104D/AA		REV. B	