



Part Number : [1301510016](#)

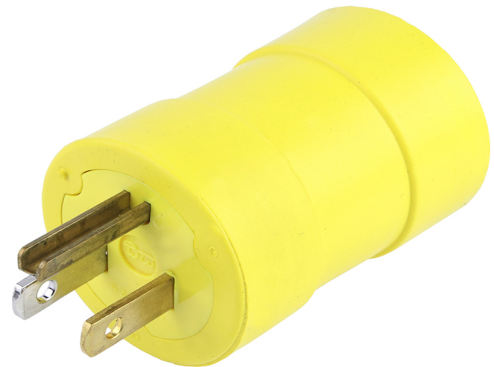
Product Description : Super-Safeway Adapter
Non-NEMA Receptacle - Female End,
15A/125V, NEMA 5-15 Plug - Male End,
15A/125V

Series Number : 130151

Status : Active

Product Category : Wiring Devices

Engineering Number : 1708



Product Environment Compliance

Compliance

GADSL/IMDS	Not Relevant
China RoHS	
EU ELV	Not Relevant
Low-Halogen Status	Not Reviewed per IEC 61249-2-21
REACH SVHC	Not Reviewed per D(2024)4144-DC (27 June 2024)
EU RoHS	Compliant per EU 2015/863

Multiple Part Product Compliance Statements

- Eu RoHS
- REACH SVHC
- Low-Halogen

Multiple Part Industry Compliance Documents

- IPC 1752A Class C
- IPC 1752A Class D
- Molex Product Compliance Declaration
- IEC-62474
- chemSHERPA (xml)

EU RoHS Certificate of Compliance

Part Details

General

Status	Active
Category	Wiring Devices
Series	130151
Description	Super-Safeway Adapter Non-NEMA Receptacle - Female End, 15A/125V, NEMA 5-15 Plug - Male End, 15A/125V
IP Rating	N/A
NEMA Configuration	NEMA 5-15
Product Family	Heavy-Duty Industrial Wiring Devices
Product Name	Super-Safeway
Specialty	N/A
Type	Adapter
UPC	78678875009

Agency

CSA	LR6837
-----	--------

Electrical

Current - Maximum per Contact	50.0A
GFCI	No
Voltage - Maximum	125V

Physical

Cord Type	N/A
Flange	No
Flip Lid	No
Gender	Male-Female
Length	N/A
Lighted Connector	No
Locking Blade	No
Net Weight	75.749/g
Poles	2-pole/3-wire
Receptacle Type	N/A

This document was generated on Sep 25, 2024