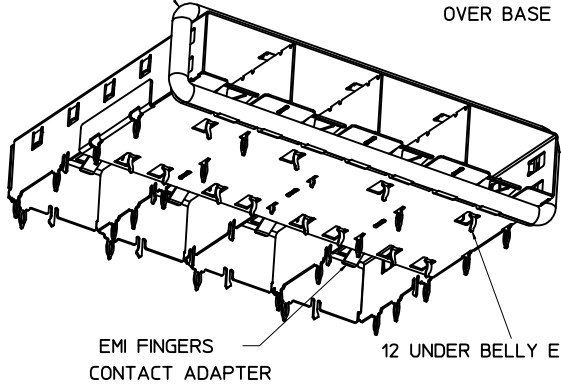
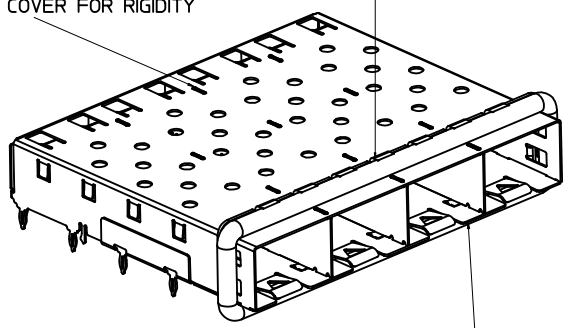


360° ELASTOMER GASKET COMPLIES WITH (SFP) MSA BOARD AND BEZEL LOCATIONS

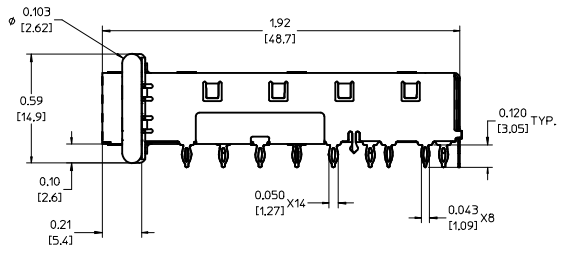
GASKET SEAM LOCATED ON TOP OF CAGE



EMI FINGERS CONTACT ADAPTER  
12 UNDER BELLY EMI PINS



INNER WALL TABS ARE COINED OVER BASE AND COVER FOR RIGIDITY  
DIMENSIONS OF EACH INNER CAGE DESIGNED TO FUNCTION WITH SMALL FORM-FACTOR PLUGGABLE (SFP) TRANSCEIVER

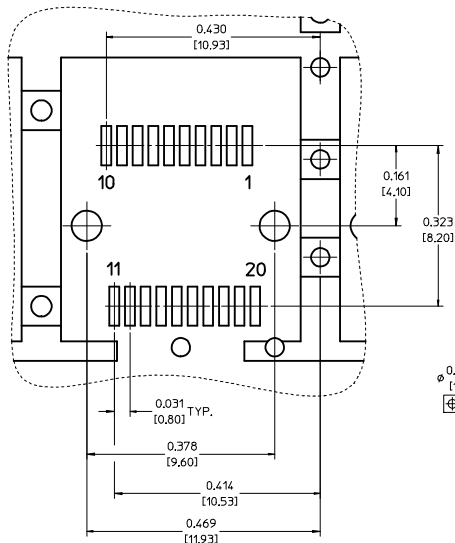


- NOTES:
- PRESS FIT LEGS 0.120" LONG- 0.062 [1.57] MINIMUM PCB THICKNESS. FOR SINGLE SIDED USE ONLY.
  - MATERIAL: COPPER ALLOY. PLATING: PRE-PLATED NICKEL
  - REFERENCE DOCUMENTS:  
PRODUCT SPECIFICATION: PS-74728-000  
COSMETIC SPECIFICATIONS: WI-HP-7-2774 AND WI-HPA-7-0093  
TEST SUMMARY: TS-74728-0415
  - MATES WITH SERIES 74728, LIGHT PIPE COVER ASSEMBLY.
  - THIS PART MEETS THE RESTRICTION OF HAZARDOUS SUBSTANCES IN ELECTRICAL AND ELECTRONIC EQUIPMENT (ROHS) DIRECTIVE (2002/95/EC).

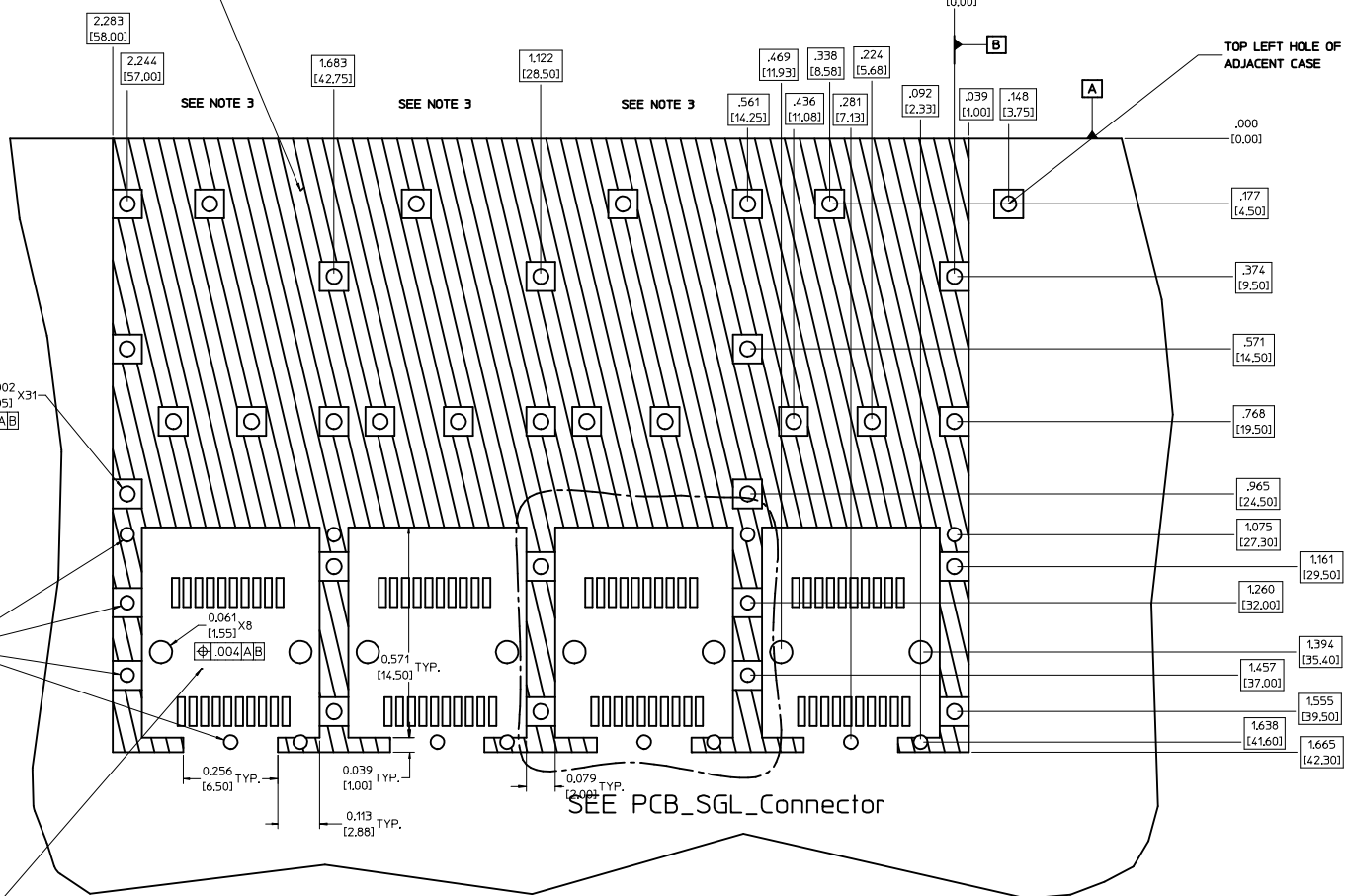
CHGD TOL ON SHIT3 EC NO: USY2007-0426 DRWN:CCOX 2007/04/20 CHKD: 2007/04/25 APPR: RMAHMO007/04/30 D REV	QUALITY SYMBOLS	GENERAL TOLERANCES (UNLESS SPECIFIED)	SCALE 3:1	DESIGN UNITS METRIC	THIRD ANGLE PROJECTION	REVISE ON CAD ONLY
	-0 -0	4 PLACES ± --- ± --- 3 PLACES ± --- ± 0.05 2 PLACES ± 0.13 ± 0.01 1 PLACE ± 0.25 ± --- ANGULAR ± 1°	DIMENSION STYLE IN/MM		TITLE	
			DRAWN BY KSIMONSO DATE 2005/07/09 CHECKED BY BRUSSELL DATE 2005/07/09 APPROVED BY BRUSSELL DATE 2005/07/09		1X4 SFP CAGE ASSEMBLY W/ PRESS FIT PINS, PRE-PLATED	
	DRAFT WHERE APPLICABLE MUST REMAIN WITHIN DIMENSIONS		MATERIAL NO. 747280420		DOCUMENT NO. SD-74728-420	SHEET NO. 1 OF 4
THIS DRAWING CONTAINS INFORMATION THAT IS PROPRIETARY TO MOLEX INCORPORATED AND SHOULD NOT BE USED WITHOUT WRITTEN PERMISSION						

### PCB LAYOUT FOR SINGLE SIDE MOUNTING

PCB\_SGL\_Connector  
SCALE 8:1



CROSS-HATCHED AREA DENOTES  
COMPONENT AND TRACE KEEP-OUT  
(EXCEPT CHASSIS GROUND)



$\phi .037 \pm .002$   
 $[0.95 \pm 0.05]$   
 $\Phi .004 [A/B]$   
X16  
SMALLER HOLE ON  
THESE FOUR ROWS ONLY

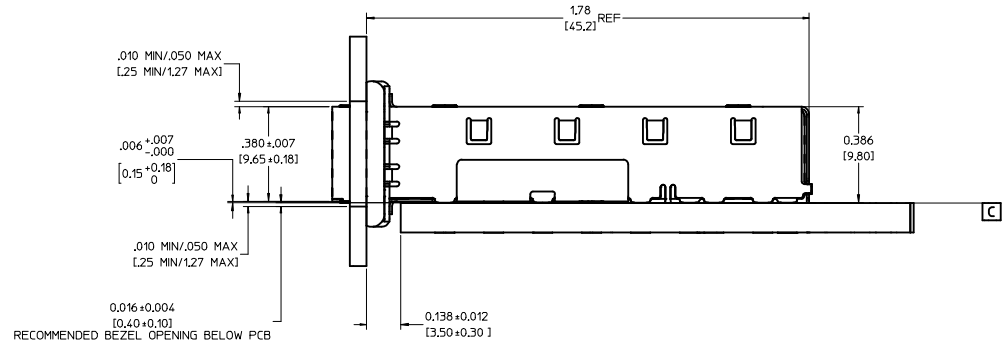
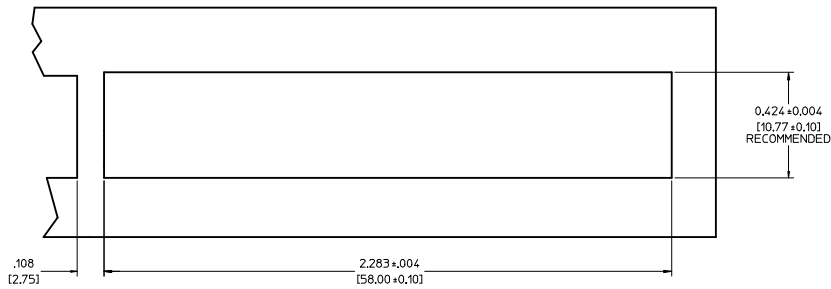
THIS AREA DENOTES  
COMPONENT KEEP-OUT  
(TRACES ALLOWED)

- NOTES:**
1. PADS AND VIAS GO TO CHASSIS GROUND, (34 PLACES).  
RECOMMENDED PADS TO BE 2mm SQUARE.
  2. PLATING OPTIONAL FOR THROUGH HOLES, (12 PLACES).
  3. HOLE PATTERN REPEATS FOR EACH PORT,  
SPACING BETWEEN PORTS IS 14.25mm.

CHGD TOL ON SH13 EC NO: USY2007-0426 DRW:CCOX 2007/04/20 CHKD: 2007/04/25 APPR: RMAHMO007/04/30	QUALITY SYMBOLS	GENERAL TOLERANCES (UNLESS SPECIFIED)	SCALE 6:1	DESIGN UNITS METRIC	THIRD ANGLE PROJECTION	REVISE ON CAD ONLY
	0 0	4 PLACES ± --- ± --- 3 PLACES ± --- ± .005 2 PLACES ± 0.13 ± .01 1 PLACE ± 0.25 ± --- ANGULAR ± 1 °	DIMENSION STYLE IN/MM		TITLE	
			DRAWN BY KSIMONSO DATE 2005/07/09		1X4 SFP CAGE ASSEMBLY W/ PRESS FIT PINS, PRE-PLATED	
	DRAFT WHERE APPLICABLE MUST REMAIN WITHIN DIMENSIONS		APPROVED BY BRUSSELL DATE 2005/07/09		MATERIAL NO. 747280420	
		THIS DRAWING CONTAINS INFORMATION THAT IS PROPRIETARY TO MOLEX INCORPORATED AND SHOULD NOT BE USED WITHOUT WRITTEN PERMISSION		SHEET NO. 2 OF 4		

20 | 19 | 18 | 17 | 16 | 15 | 14 | 13 | 12 | 11 | 74728 | 9 | 8 | 7 | 6 | 5 | 4 | 3 | 2 | 1

BEZEL AND BOARD POSITION DIMENSIONS FOR SINGLE SIDE MOUNTING

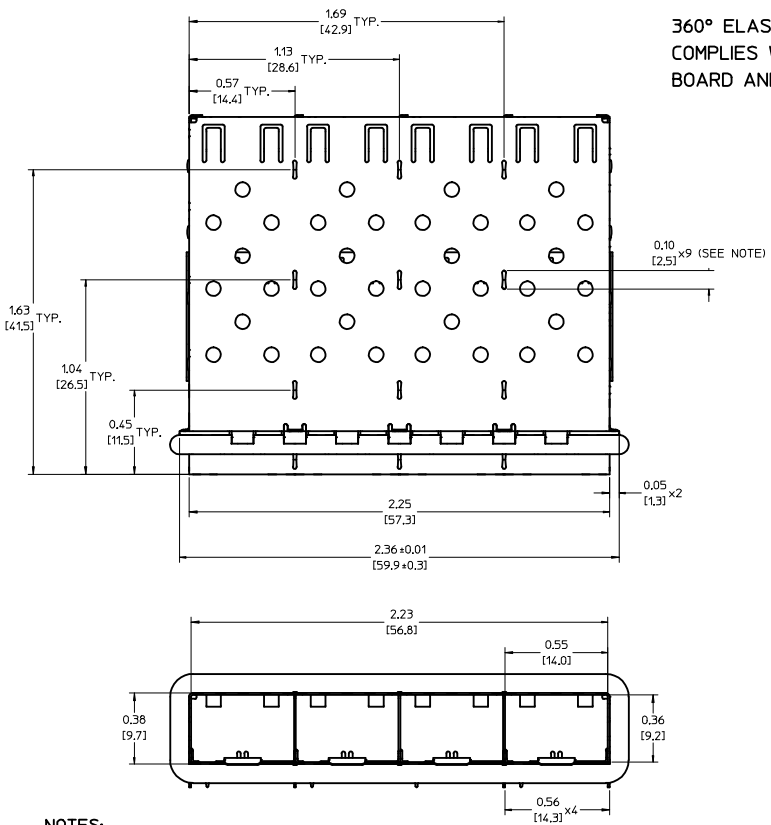


CHGD TOL ON SH13 EC NO: USY2007-0426 DRWN:CCOX 2007/04/20 CHKD: 2007/04/25 APPR: RIMAHMOO007/04/30 D	QUALITY SYMBOLS ▽-0 ▽-0 DESCRIPTION REV	GENERAL TOLERANCES (UNLESS SPECIFIED)		SCALE 4:1	DESIGN UNITS METRIC	THIRD ANGLE PROJECTION REVISE ON CAD ONLY	TITLE 1X4 SFP CAGE ASSEMBLY W/ PRESS FIT PINS, PRE-PLATED	
		4 PLACES ± --- ± --- 3 PLACES ± --- ± .005 2 PLACES ± 0.13 ± .01 1 PLACE ± 0.25 ± ---	DIMENSION STYLE IN/MM	DRAWN BY KSIMONSO	DATE 2005/07/09			
		ANGULAR ± 1 °		CHECKED BY BRUSSELL	DATE 2005/07/09	MATERIAL NO. 747280420	DOCUMENT NO. SD-74728-420	SHEET NO. 3 OF 4
		DRAFT WHERE APPLICABLE MUST REMAIN WITHIN DIMENSIONS		APPROVED BY BRUSSELL	DATE 2005/07/09			
THIS DRAWING CONTAINS INFORMATION THAT IS PROPRIETARY TO MOLEX INCORPORATED AND SHOULD NOT BE USED WITHOUT WRITTEN PERMISSION								

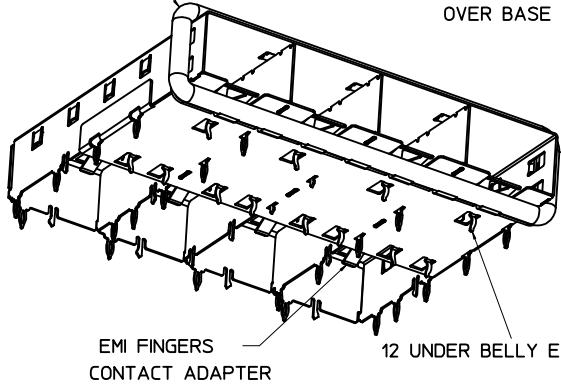
19 | 18 | 17 | 16 | 15 | 14 | 13 | 12 | 11 | 10 | 9 | 8 | 7 | 6 | 5 | 4 | 3 | 2 | 1

DATE	REV	CHANGES
2005/07/09	A	INITIAL RELEASE
2006/08/07	B	ADDED NOTE IDENTIFYING HOLE ON ADJACENT CASE
2007/04/10	C	[1] ON SHT3 DELETED F9(.073); [2] ON SHT3 CHG'D F7(.138) TOLERANCE FROM ±.012 TO ±.035; [3] IDENTIFIED ALL VIEWS WITH DISTINCT NAMES.
2007/04/20	D	[1] ON SHT3 CHG'D F7(.138) TOLERANCE FROM ±.035 TO ±.012.

CHGD TOL ON SHT3 EC NO: USY2007-0426 DRAWN:CCOX 2007/04/20 CHKD: 2007/04/25 APPR: RMAHMOO007/04/30 D	QUALITY SYMBOLS	GENERAL TOLERANCES (UNLESS SPECIFIED)	SCALE 1:1	DESIGN UNITS METRIC	THIRD ANGLE PROJECTION	REVISE ON CAD ONLY															
	▽-0	<table border="1"> <thead> <tr> <th></th> <th>mm</th> <th>INCH</th> </tr> </thead> <tbody> <tr> <td>4 PLACES</td> <td>± ---</td> <td>± ---</td> </tr> <tr> <td>3 PLACES</td> <td>± ---</td> <td>±.005</td> </tr> <tr> <td>2 PLACES</td> <td>± 0.13</td> <td>± .01</td> </tr> <tr> <td>1 PLACE</td> <td>± 0.25</td> <td>± ---</td> </tr> </tbody> </table>		mm	INCH	4 PLACES	± ---	± ---	3 PLACES	± ---	±.005	2 PLACES	± 0.13	± .01	1 PLACE	± 0.25	± ---	DIMENSION STYLE IN/MM	TITLE 1X4 SFP CAGE ASSEMBLY W/ PRESS FIT PINS, PRE-PLATED	MOLEX INCORPORATED	
		mm	INCH																		
	4 PLACES	± ---	± ---																		
3 PLACES	± ---	±.005																			
2 PLACES	± 0.13	± .01																			
1 PLACE	± 0.25	± ---																			
▽-0	ANGULAR ± 1 °	DRAFT WHERE APPLICABLE MUST REMAIN WITHIN DIMENSIONS	DRAWN BY: KSIMONSO DATE: 2005/07/09 CHECKED BY: BRUSSELL DATE: 2005/07/09 APPROVED BY: BRUSSELL DATE: 2005/07/09	MATERIAL NO.: 747280420 DOCUMENT NO.: SD-74728-420	SHEET NO. 4 OF 4																
DESCRIPTION	THIS DRAWING CONTAINS INFORMATION THAT IS PROPRIETARY TO MOLEX INCORPORATED AND SHOULD NOT BE USED WITHOUT WRITTEN PERMISSION																				

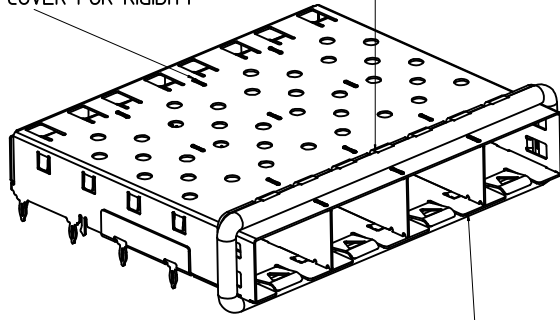


360° ELASTOMER GASKET COMPLIES WITH (SFP) MSA BOARD AND BEZEL LOCATIONS

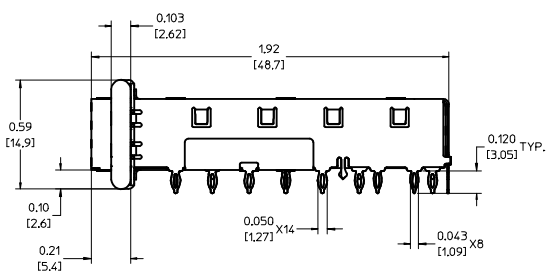


GASKET SEAM LOCATED ON TOP OF CAGE

INNER WALL TABS ARE COINED OVER BASE AND COVER FOR RIGIDITY



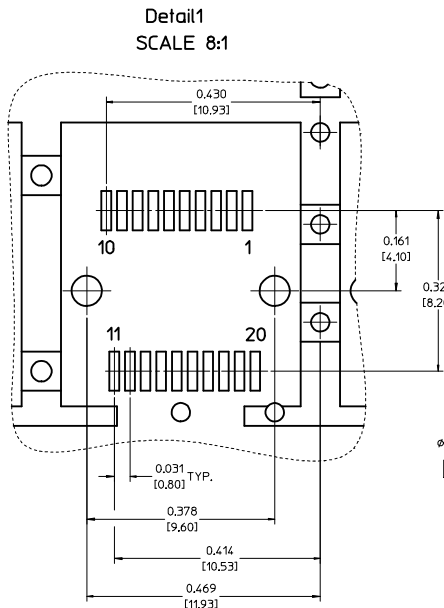
DIMENSIONS OF EACH INNER CAGE DESIGNED TO FUNCTION WITH SMALL FORM-FACTOR PLUGGABLE (SFP) TRANSCEIVER



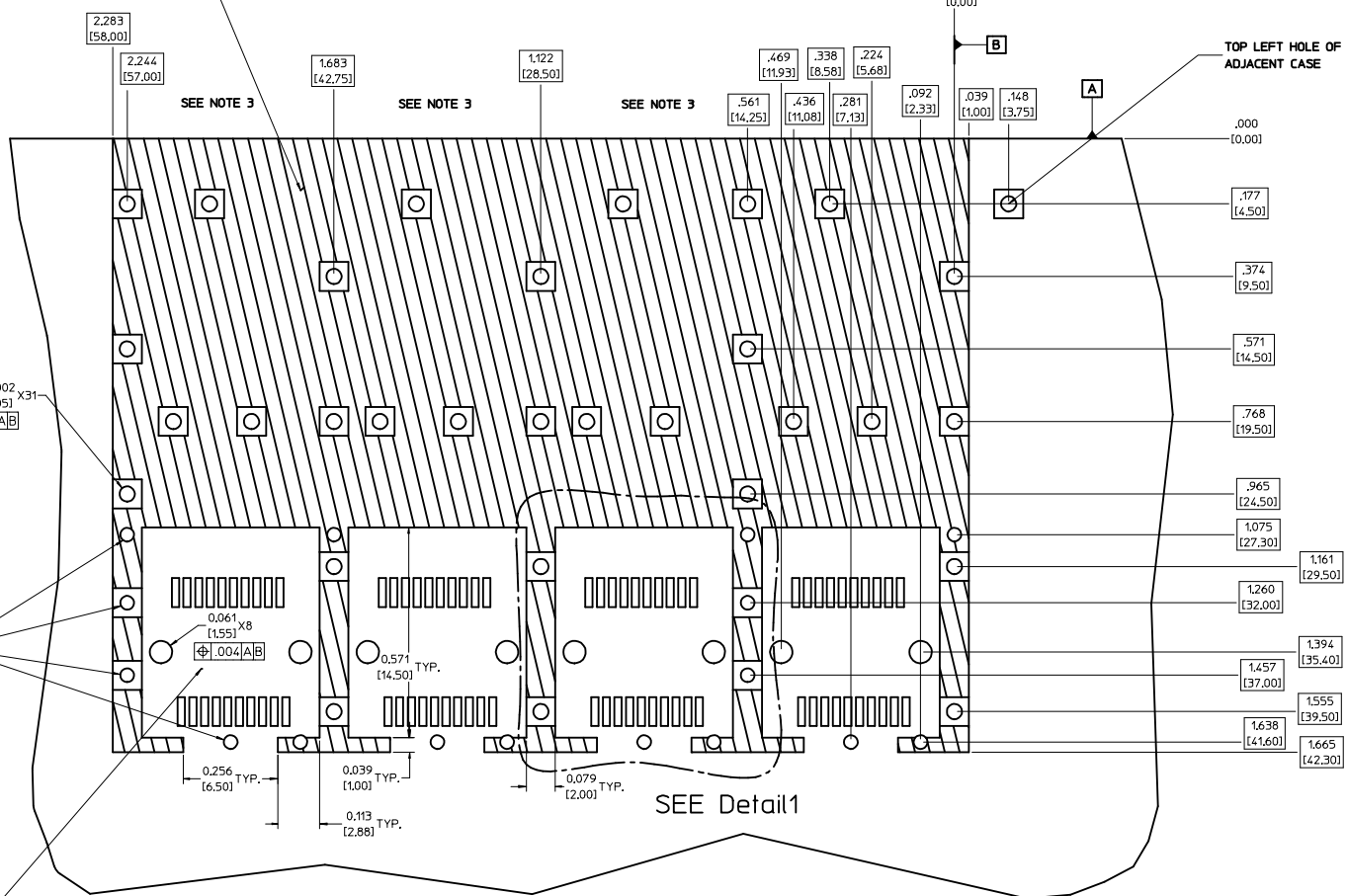
- NOTES:
- PRESS FIT LEGS 0.120" LONG- 0.062 [1.57] MINIMUM PCB THICKNESS. FOR SINGLE SIDED USE ONLY.
  - MATERIAL: COPPER ALLOY. PLATING: PRE-PLATED NICKEL
  - REFERENCE DOCUMENTS:  
 PRODUCT SPECIFICATION: PS-74728-000  
 COSMETIC SPECIFICATIONS: WI-HP-7-2774 AND WI-HPA-7-0093  
 TEST SUMMARY: TS-74728-0415
  - MATES WITH SERIES 74728, LIGHT PIPE COVER ASSEMBLY.
  - THIS PART MEETS THE RESTRICTION OF HAZARDOUS SUBSTANCES IN ELECTRICAL AND ELECTRONIC EQUIPMENT (ROHS) DIRECTIVE (2002/95/EC).

EC NO: 2006/08/01 DRWN:CCOX CHKD: 2006/08/07 APPR:BRUSSELL 2006/08/15 B	QUALITY SYMBOLS -0 -0	GENERAL TOLERANCES (UNLESS SPECIFIED) .mm INCH		SCALE 3:1 DESIGN UNITS METRIC	THIRD ANGLE PROJECTION REVISE ON CAD ONLY	
		4 PLACES ± --- ± --- 3 PLACES ± --- ± .005 2 PLACES ± .13 ± .01 1 PLACE ± 0.25 ± ---	DIMENSION STYLE IN/MM		DRAWN BY KSIMONSO DATE 2005/07/09	TITLE 1X4 SFP CAGE ASSEMBLY W/ PRESS FIT PINS, PRE-PLATED
		ANGULAR ± 1°		CHECKED BY BRUSSELL DATE 2005/07/09	MOLEX INCORPORATED	
		DRAFT WHERE APPLICABLE MUST REMAIN WITHIN DIMENSIONS		APPROVED BY BRUSSELL DATE 2005/07/09	MATERIAL NO. 747280420 DOCUMENT NO. SD-74728-420 SHEET NO. 1 OF 4	

### PCB LAYOUT FOR SINGLE SIDE MOUNTING



CROSS-HATCHED AREA DENOTES COMPONENT AND TRACE KEEP-OUT (EXCEPT CHASSIS GROUND)



$\phi .037 \pm .002$  X16  
 $\phi .004$  [A/B]  
SMALLER HOLE ON THESE FOUR ROWS ONLY

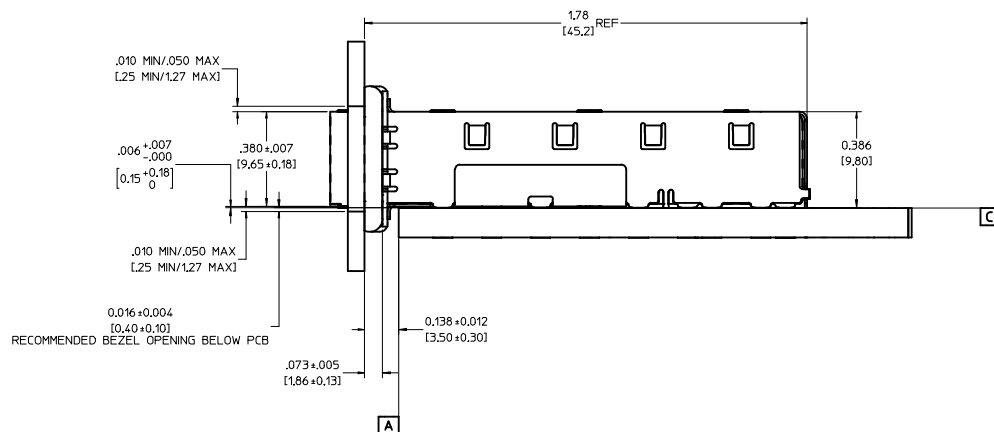
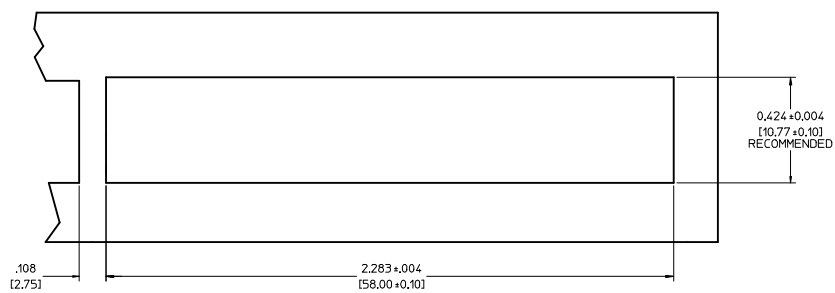
THIS AREA DENOTES COMPONENT KEEP-OUT (TRACES ALLOWED)

- NOTES:**
- PADS AND VIAS GO TO CHASSIS GROUND, (34 PLACES). RECOMMENDED PADS TO BE 2mm SQUARE.
  - PLATING OPTIONAL FOR THROUGH HOLES, (12 PLACES).
  - HOLE PATTERN REPEATS FOR EACH PORT, SPACING BETWEEN PORTS IS 14.25mm.

EC NO: 2006/08/07 DRW: CCOX CHKD: 2006/08/07 APPR: BRUSSELL 2006/08/15 REV: B	QUALITY SYMBOLS	GENERAL TOLERANCES (UNLESS SPECIFIED)	SCALE: 6:1	DESIGN UNITS: METRIC	THIRD ANGLE PROJECTION	REVISE ON CAD ONLY
	0 0	4 PLACES ± --- ± --- 3 PLACES ± --- ± .005 2 PLACES ± 0.13 ± .01 1 PLACE ± 0.25 ± --- ANGULAR ± 1°	DIMENSION STYLE: IN/MM		TITLE: 1X4 SFP CAGE ASSEMBLY W/ PRESS FIT PINS, PRE-PLATED	
			DRAWN BY: KSIMONSO DATE: 2005/07/09		MATERIAL NO. MOLEX INCORPORATED	
	DRAFT WHERE APPLICABLE MUST REMAIN WITHIN DIMENSIONS		APPROVED BY: BRUSSELL DATE: 2005/07/09		DOCUMENT NO. 747280420	
THIS DRAWING CONTAINS INFORMATION THAT IS PROPRIETARY TO MOLEX INCORPORATED AND SHOULD NOT BE USED WITHOUT WRITTEN PERMISSION						

20 | 19 | 18 | 17 | 16 | 15 | 14 | 13 | 12 | 11 | 74728 | 9 | 8 | 7 | 6 | 5 | 4 | 3 | 2 | 1

BEZEL AND BOARD POSITION DIMENSIONS FOR SINGLE SIDE MOUNTING



EC NO: 2006/08/01 DRWN:CCOX CHKD: 2006/08/07 APPR:BRUSSELL2006/08/15 B	QUALITY SYMBOLS ▽-0 ▽-0	GENERAL TOLERANCES (UNLESS SPECIFIED)		SCALE 4:1	DESIGN UNITS METRIC	THIRD ANGLE PROJECTION	REVISE ON CAD ONLY	
		DIMENSION STYLE IN/MM		DRAWN BY KSIMONSO	DATE 2005/07/09	TITLE 1X4 SFP CAGE ASSEMBLY W/ PRESS FIT PINS, PRE-PLATED		
		4 PLACES ±.005 3 PLACES ±.005 2 PLACES ±0.13 1 PLACE ±0.25		CHECKED BY BRUSSELL	DATE 2005/07/09			
		ANGULAR ± 1°		APPROVED BY BRUSSELL		DATE 2005/07/09	MATERIAL NO. 747280420	DOCUMENT NO. SD-74728-420
DRAFT WHERE APPLICABLE MUST REMAIN WITHIN DIMENSIONS		THIS DRAWING CONTAINS INFORMATION THAT IS PROPRIETARY TO MOLEX INCORPORATED AND SHOULD NOT BE USED WITHOUT WRITTEN PERMISSION						

20 | 19 | 18 | 17 | 16 | 15 | 14 | 13 | 12 | 11 | 74728 | 9 | 8 | 7 | 6 | 5 | 4 | 3 | 2 | 1

DATE	REV	CHANGES	COMMENTS
2005/06/09	1	PRELIMINARY DOCUMENT	N/A
2005/07/09	A	INITIAL RELEASE	N/A
2006/08/07	B	ADDED NOTE IDENTIFYING HOLE ON ADJACENT CASE	N/A

EC NO: 2006/08/07 DRAWN: COX CHKD: 2006/08/07 APPR: BRUSSELL 2006/08/15 B	QUALITY SYMBOLS ▽-0 ▽-0 DESCRIPTION REV	GENERAL TOLERANCES (UNLESS SPECIFIED)		SCALE <b>1:1</b>	DESIGN UNITS <b>METRIC</b>	THIRD ANGLE PROJECTION REVISE ON CAD ONLY	TITLE <b>1X4 SFP CAGE ASSEMBLY          W/ PRESS FIT PINS,          PRE-PLATED</b>		
		DIMENSION STYLE <b>IN/MM</b>		DRAWN BY DATE KSIMONSO 2005/07/09					
		4 PLACES ± --- ± --- 3 PLACES ± --- ±.005 2 PLACES ± 0.13 ±.01 1 PLACE ± 0.25 ± ---		CHECKED BY DATE BRUSSELL 2005/07/09		APPROVED BY DATE BRUSSELL 2005/07/09		MATERIAL NO. <b>747280420</b>	DOCUMENT NO. <b>SD-74728-420</b>
		ANGULAR ± 1 ° DRAFT WHERE APPLICABLE MUST REMAIN WITHIN DIMENSIONS		SHEET NO. <b>4 OF 4</b>					
THIS DRAWING CONTAINS INFORMATION THAT IS PROPRIETARY TO MOLEX INCORPORATED AND SHOULD NOT BE USED WITHOUT WRITTEN PERMISSION									

19 | 18 | 17 | 16 | 15 | 14 | 13 | 12 | 11 | 10 | 9 | 8 | 7 | 6 | 5 | 4 | 3 | 2 | 1