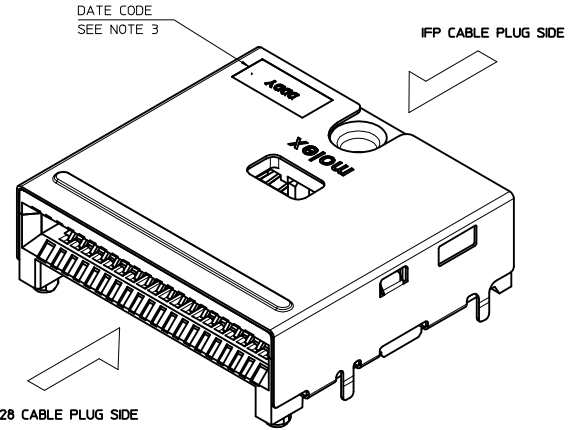
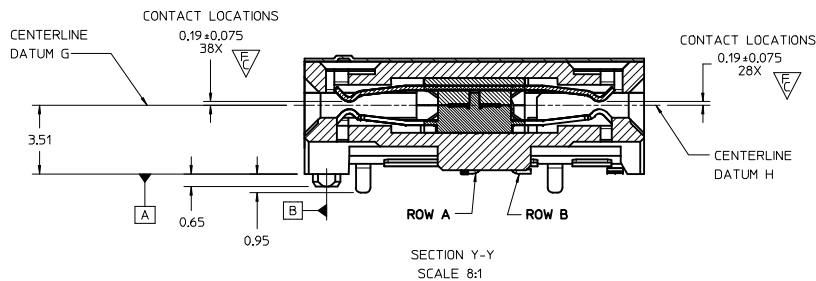
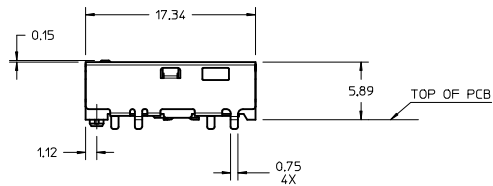


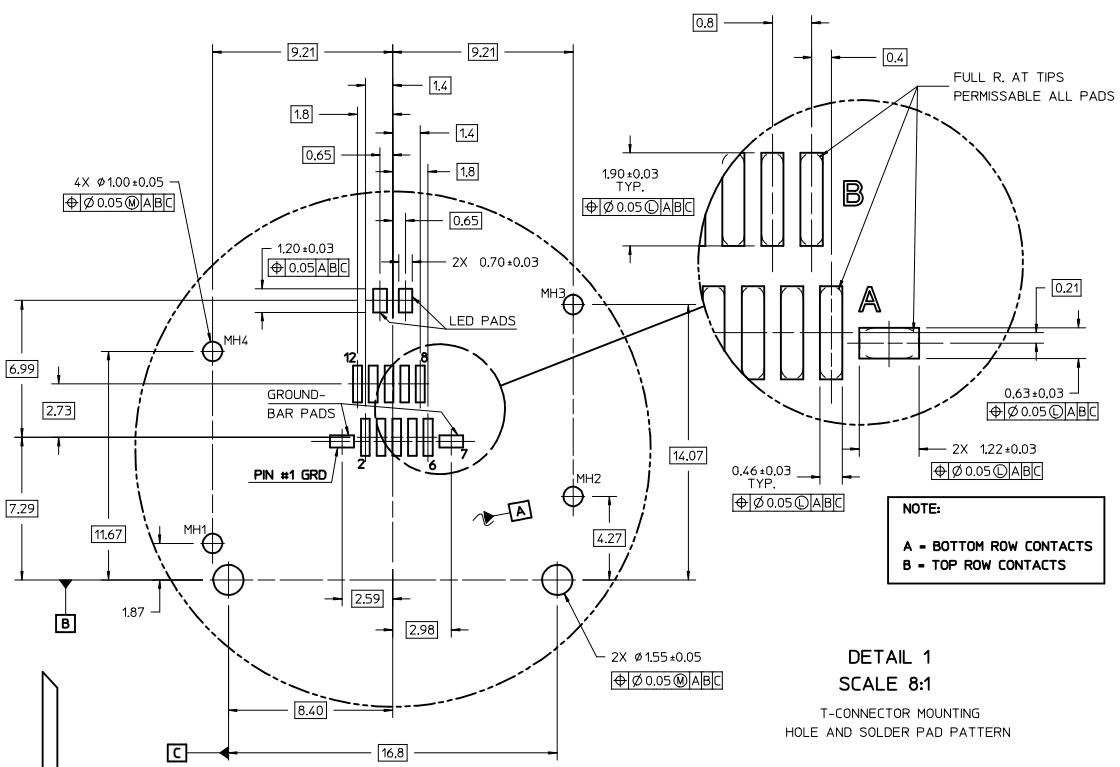
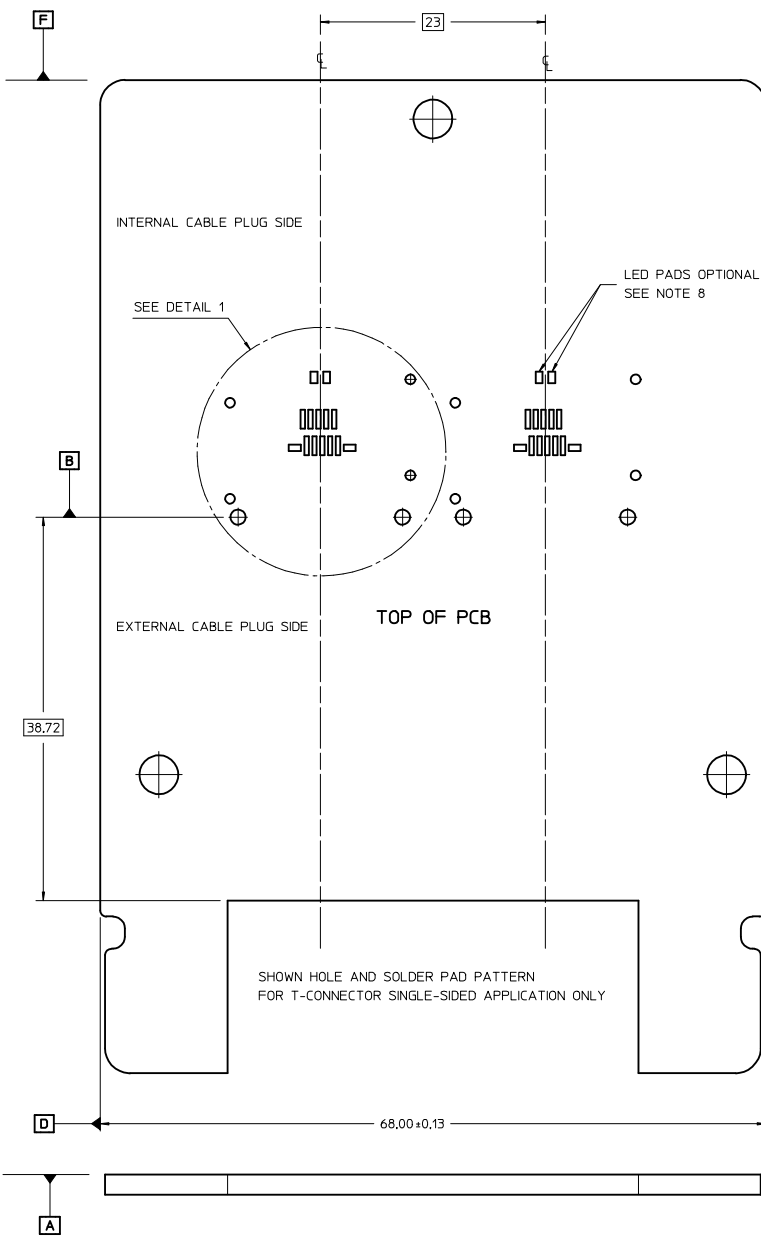
DETAIL 5  
SCALE 10:1



NOTES:

- MATERIAL -  
HOUSING - HALOGEN FREE GLASS FILLED, LCP  
UL 94V-0, COLOR: BLACK  
SHELLS: 0.15 THICK NICKEL-SILVER ALLOY, UNPLATED  
TERMINALS - HIGH PERFORMANCE COPPER ALLOY
- PLATING -  
CONTACT AREA - 0.76 µm MIN GOLD OVER 2.54 µm NICKEL  
SOLDER AREA - 2.54 -5.09 µm TIN OVER 2.54 µm MIN NICKEL
- DATE CODE: 4 DIGIT (3 DIGIT DAY, 1 DIGIT YEAR)
- CONFORMS TO PRODUCT SPECIFICATION: RESTRICTED-PS-172604-0001
- CONNECTOR ASSEMBLY IS RoHS AND LOW HALOGEN COMPLIANT
- DIMENSIONS AND TOLERANCES CONFORM TO AMSE Y14.5 2009
- LED IS OPTIONAL, RECOMMENDED LED PACKAGE: 1608/0603 0.4mm HIGH MAX.
- PACKAGING: TAPE AND REEL, PER PK-172604-9001.
- CONNECTOR TO BE USED IN CONJUNCTION WITH EMI CAGES SHOWN ON DRAWING SD-172604-2100
- IFP CABLE PLUG TO HAVE 1.0mm THICK PCB.

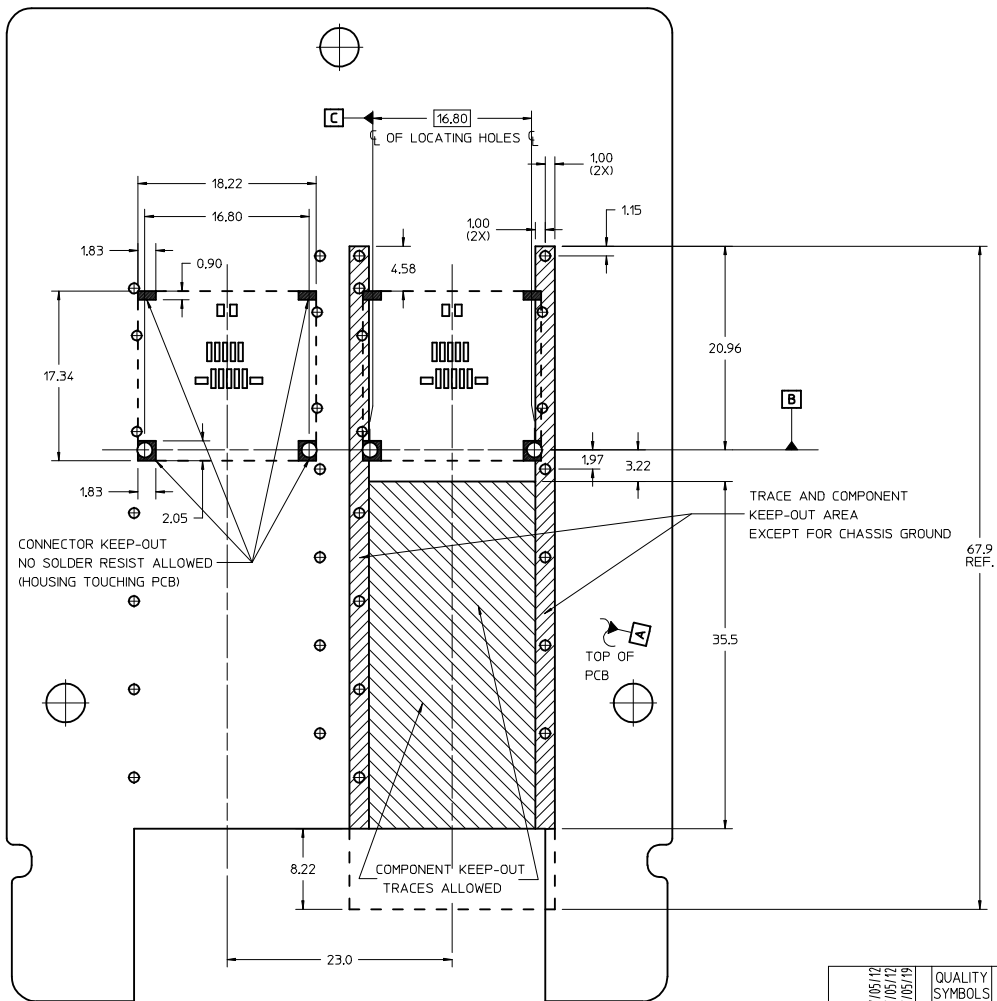
UPDATE PACKAGING IEC NO. UCP2017-2046 DRAWN BY: MWOLFE 2017/05/12 CHECKED BY: CHYKBARKER 2017/05/12 APPR: SMILLER 2017/05/19 REV DESCRIPTION	QUALITY SYMBOLS	GENERAL TOLERANCES (UNLESS SPECIFIED)	DIMENSION STYLE	SCALE	DESIGN UNITS	THIRD ANGLE PROJECTION	
	▽=0	mm INCH	MM ONLY	4:1	METRIC	☉	
	▽=3	4 PLACES ± --- ± --- 3 PLACES ± --- ± --- 2 PLACES ± 0.13 ± --- 1 PLACE ± 0.25 ± --- 0 PLACE ± --- ± ---	DRAWN BY DATE MWOLFE 2017/01/05	CHECKED BY DATE	T-PATH CONNECTOR HARDTOP ASSEMBLY		
	▽=0	ANGULAR ±1/2° DRAFT WHERE APPLICABLE MUST REMAIN WITHIN DIMENSIONS	APPROVED BY DATE SMILLER 2017/05/19				
		MATERIAL NO. 472604-0003	DOCUMENT NO. SD-172604-0003	molex SHEET NO. 1 OF 3			



PCB LAYOUT FOR T-PATH CONNECTOR MOUNTING

FRONT OF CONNECTOR  
(PLUG MODULE SIDE)

SEE SHEET 1 IEC NO: UCP2017-2046 DRAWN BY: MWOLFE 2017/05/12 CHECKED BY: CHYD BARKER 2017/05/12 APPR: SMILLER 2017/05/19	QUALITY SYMBOLS	GENERAL TOLERANCES (UNLESS SPECIFIED)	DIMENSION STYLE	SCALE	DESIGN UNITS	THIRD ANGLE PROJECTION	
	$\nabla=0$	mm INCH	MM ONLY	4:1	METRIC		
	$\nabla=0$	4 PLACES ± --- ± ---	DRAWN BY DATE	TITLE			
	$\nabla=0$	3 PLACES ± --- ± ---	MWOLFE 2017/01/05	T-PATH CONNECTOR HARDTOP ASSEMBLY			
$\nabla=0$	2 PLACES ± 0.13 ± ---	CHECKED BY DATE	MATERIAL NO. DOCUMENT NO.				
$\nabla=0$	1 PLACE ± 0.25 ± ---	APPROVED BY DATE	472604-0003 SD-172604-0003				
$\nabla=0$	0 PLACE ± --- ± ---	SMILLER 2017/05/19	SHEET NO. 2 OF 3				
DRAFT WHERE APPLICABLE MUST REMAIN WITHIN DIMENSIONS		THIS DRAWING CONTAINS INFORMATION THAT IS PROPRIETARY TO MOLEX INCORPORATED AND SHOULD NOT BE USED WITHOUT WRITTEN PERMISSION					



T-PATH CONNECTOR AND EMI CAGE  
KEEP-OUT ZONES

<b>SEE SHEET 1</b> IEC NO: UCP2017-2046 DRAWN BY: MWOLFE 2017/05/12 CHECKED BY: CHYD BARKER 2017/05/12 APPR: SMILLER 2017/05/19	QUALITY SYMBOLS	GENERAL TOLERANCES (UNLESS SPECIFIED)	DIMENSION STYLE	SCALE	DESIGN UNITS	THIRD ANGLE PROJECTION
	$\nabla=0$ $\nabla=0$ $\nabla=0$	mm INCH 4 PLACES ± --- ± --- 3 PLACES ± --- ± --- 2 PLACES ± 0.13 ± --- 1 PLACE ± 0.25 ± --- 0 PLACE ± --- ± ---	MM ONLY	4:1	METRIC	DRAWN BY: MWOLFE DATE: 2017/01/05 CHECKED BY: SMILLER DATE: 2017/05/19
ANGULAR ±1/2° DRAFT WHERE APPLICABLE MUST REMAIN WITHIN DIMENSIONS		SIZE D		THIS DRAWING CONTAINS INFORMATION THAT IS PROPRIETARY TO MOLEX INCORPORATED AND SHOULD NOT BE USED WITHOUT WRITTEN PERMISSION		