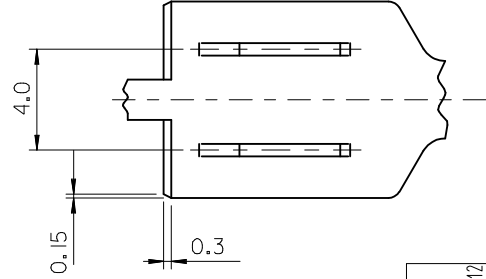
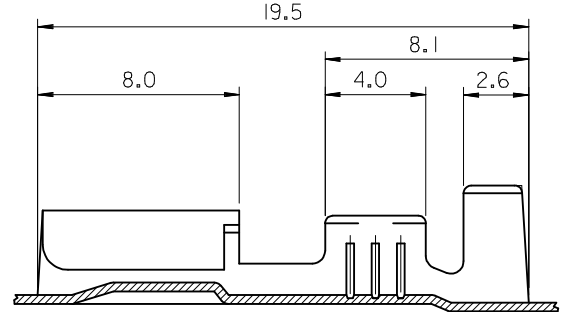
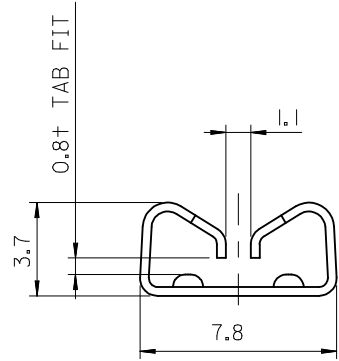


SECTION A-A

SECTION B-B



PART NO.	a	b	Rc	d	e	Rf	WIRE RANGE (mmSQ)	Q'TY/REEL	FINISH	REMARK (OPTION)	
35427-9700									UNPLATED	---	
-9702	S	2.8	2.8	0.9	3.8	3.8	1.5	0.3 ± 0.5	5000	PLATED	---
-9710									UNPLATED	MARK "H"	
35427-9800									UNPLATED	---	
-9802	M	3.0	3.5	1.2	5.0	5.0	2.0	0.85 ± 1.25	5000	PLATED	---
-9810									UNPLATED	MARK "H"	
35427-9900									UNPLATED	---	
-9902	L	5.2	4.6	2.0	6.3	6.3	2.5	2.0 ± 3.0	4000	PLATED	---
-9910									UNPLATED	MARK "H"	

NOTES

- MATERIAL : BRASS (C2600), THICK = 0.35mm
- TENSION (35427-970\*,980\*,990\*)
  - INSERTION FORCE(INITIAL) : 0.9 ~ 1.2 kgf
  - WITHDRAWAL FORCE(6 TIMES) : 0.4 kgf MIN.
- TENSION (35427-971\*,981\*,991\*) "H" MARK
  - INSERTION FORCE(INITIAL) : 1.5 ~ 2.0 Kgf
  - WITHDRAWAL FORCE(6 TIMES) : 0.8Kg f MIN.

<b>CHANGED NOTE #2</b> EC NO: KTR2013-0047 DRWN: HIMOON 2013/06/12 CHKD: CHKD: APPR: JYCHO1 2013/07/29	QUALITY SYMBOLS	GENERAL TOLERANCES (UNLESS SPECIFIED)	DIMENSION STYLE	SCALE	DESIGN UNITS	THIRD ANGLE PROJECTION
	▼=0 C=0	mm INCH 4 PLACES ± --- ± --- 3 PLACES ± --- ± --- 2 PLACES ± 0.3 ± --- 1 PLACE ± 0.3 ± --- ANGULAR ± 3 °	MM ONLY	5:1	METRIC	
	DESCRIPTION	DRAWN BY DATE	TITLE	POWERMATE FEMALE TERM. (S,M,L)		
	REV	CHECKED BY DATE	APPROVED BY DATE	MOLEX INCORPORATED		
	DRAFT WHERE APPLICABLE MUST REMAIN WITHIN DIMENSIONS	MATERIAL NO.	DOCUMENT NO.	SD-35427-002		
		SIZE	THIS DRAWING CONTAINS INFORMATION THAT IS PROPRIETARY TO MOLEX INCORPORATED AND SHOULD NOT BE USED WITHOUT WRITTEN PERMISSION			