

# Modular Electric Actuators OSP-E

ORIGA SYSTEM PLUS

aerospace  
climate control  
electromechanical  
filtration  
fluid & gas handling  
hydraulics  
**pneumatics**  
process control  
sealing & shielding



ENGINEERING YOUR SUCCESS.

# Clevis Mounting

Size 25, 32, 50



- **OSP-E..B**  
Belt actuator with internal plain bearing guide
- **OSP-E..SB**  
Ball screw actuator with internal plain bearing guide
- **OSP-E..ST**  
Trapezoidal screw actuator with internal plain bearing guide

When external guides are used, parallelism deviations can lead to mechanical strain on the piston. This can be avoided by the use of a Compensation.

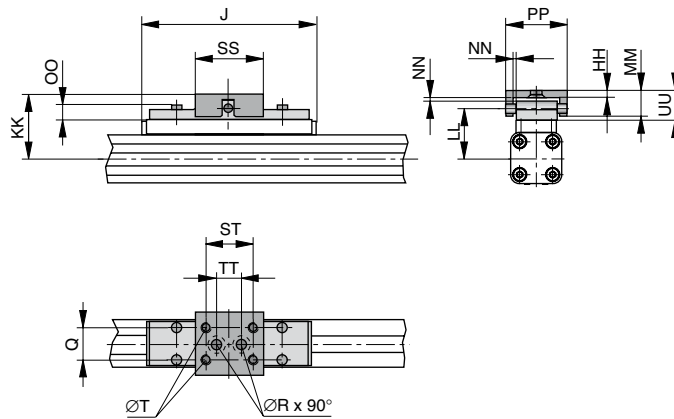
Freedom of movement is provided as follows:

- **Tilting in direction of movement**
- **Vertical compensation**
- **Tilting sideways**
- **Horizontal compensation**

A stainless steel version is also available.

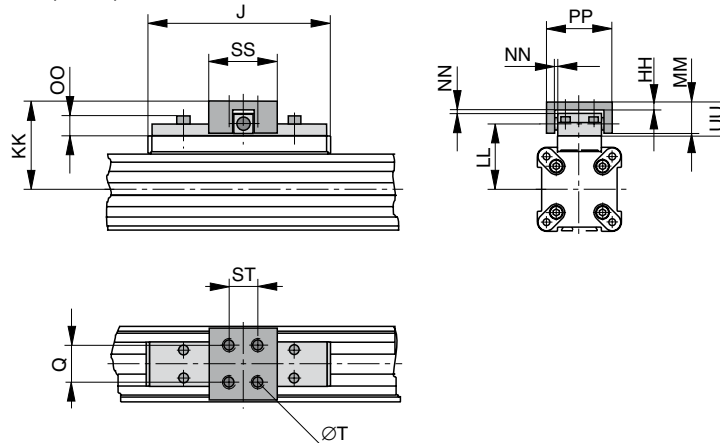
## Series OSP-E25 to E32

### OSP-E..B, ..SB, ..ST



## Series OSP-E50

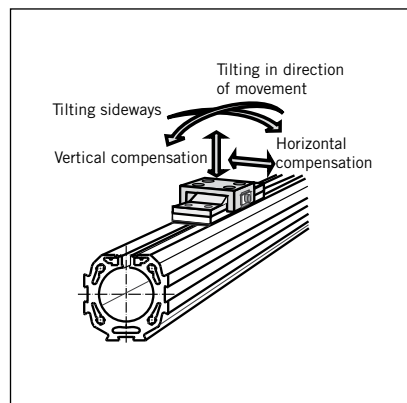
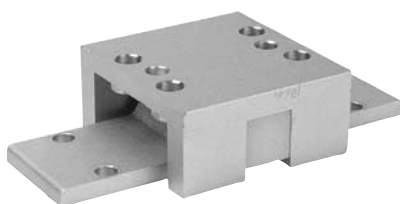
### OSP-E..B, ..SB, ..ST



## Dimension Table [mm] and Order Instructions

Series	J	Q	T	øR	HH	KK	LL	MM	NN*	OO	PP	SS	ST	TT	UU	Order No.	
																Standard	Stainless
<b>OSP-E25</b>	117	16	M5	5.5	3.5	52	39	19	2	9	38	40	30	16	21	<b>20005</b>	<b>20092</b>
<b>OSP-E32</b>	152	25	M6	6.6	6	68	50	28	2	13	62	60	46	40	30	<b>20096</b>	<b>20094</b>
<b>OSP-E50</b>	200	25	M6	-	6	79	61	28	2	13	62	60	46	-	30	<b>20097</b>	<b>20095</b>

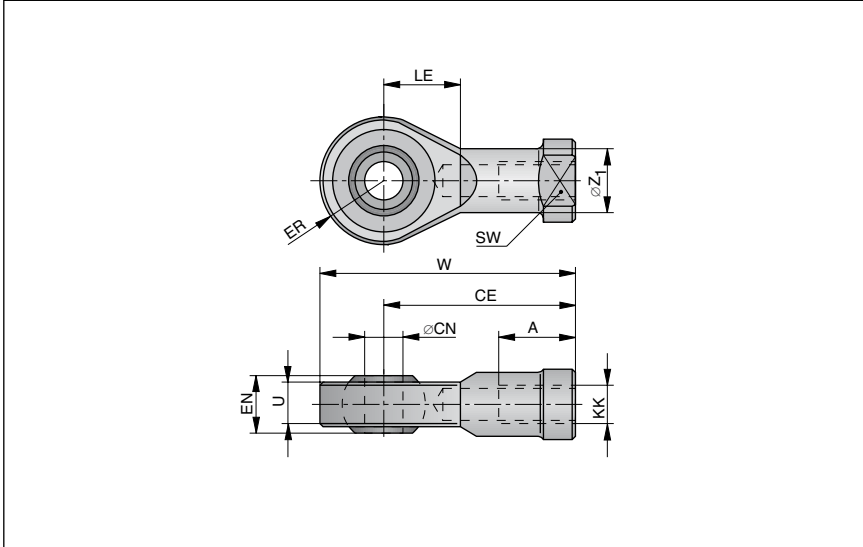
\* Dimension NN gives the possible plus and minus play in horizontal and vertical movement, which also makes tilting sideways possible.



### Please note:

When using additional inversion mountings, take into account the dimensions on pages 22, 44, 58, 72 ff.

**Piston Rod Eye according to ISO 8139 (CETOP RP103 P)**  
**Type: GA-..**



**Order Instructions, Dimension Table [mm], Weight**

Series	Type	A	CE	$\phi$ CN	EN	ER	KK	LE	SW	U	W	$\phi Z_1$	Weight [kg]	Order No.
OSP-E25SBR, STR	GA-M10x1.25	20	43	10	14	14	M10x1.25	15	17	10.5	57	15	0.072	KY6147
OSP-E32SBR, STR	GA-M10x1.25	20	43	10	14	14	M10x1.25	15	17	10.5	57	15	0.072	KY6147
OSP-E50SBR, STR	GA-M16x1.5	28	64	16	21	21	M16x1.5	22	22	15	85	22	0.21	KY6150

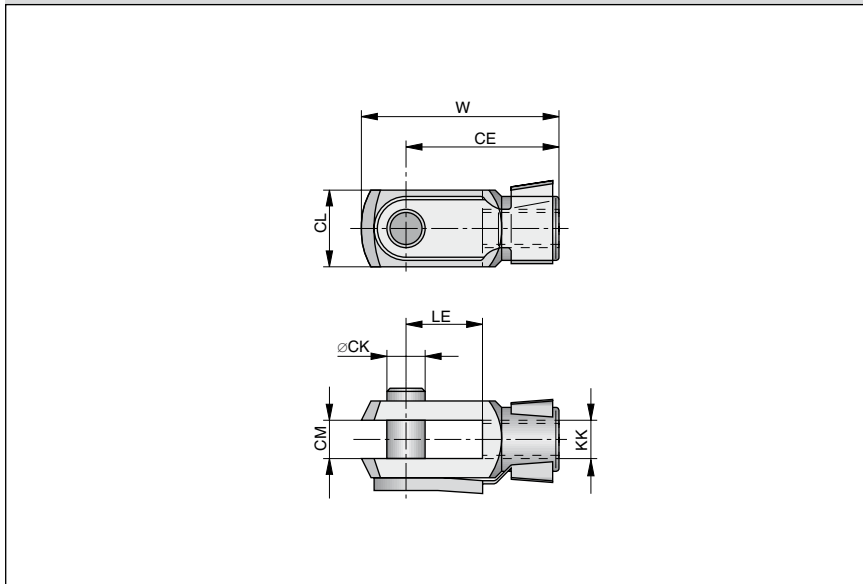
# Piston Rod Eye according to ISO 8139



- **OSP-E..SBR**  
Ball screw actuator with internal plain bearing guide and piston rod
- **OSP-E..STR**  
Trapezoidal screw actuator with internal plain bearing guide and piston rod



**Piston Rod Clevis according to ISO 8140 (CETOP RP102P)**  
**Type: GK-..**



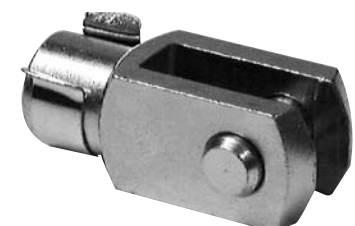
**Order Instructions, Dimension Table [mm], Weight**

Series	Type	$\phi$ CK	CE	CL	CM	KK	LE	W	Weight[kg]	Order No.
OSP-E25SBR, STR	GK-M10x1.25	10	40	20	10	M10x1.25	20	52	0.08	KY6135
OSP-E32SBR, STR	GK-M10x1.25	10	40	20	10	M10x1.25	20	52	0.08	KY6135
OSP-E50SBR, STR	GK-M16x1.5	16	64	32	16	M16x1.5	32	83	0.30	KY6139

# Piston Rod Clevis according to ISO 8140



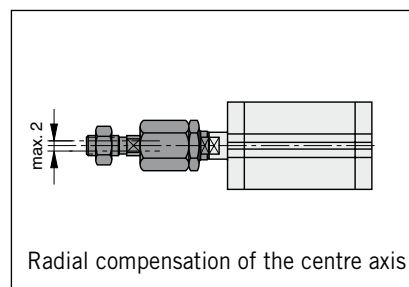
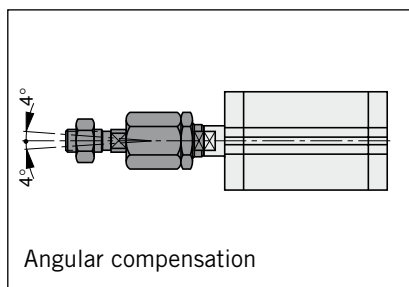
- **OSP-E..SBR**  
Ball screw actuator with internal plain bearing guide and piston rod
- **OSP-E..STR**  
Trapezoidal screw actuator with internal plain bearing guide and piston rod



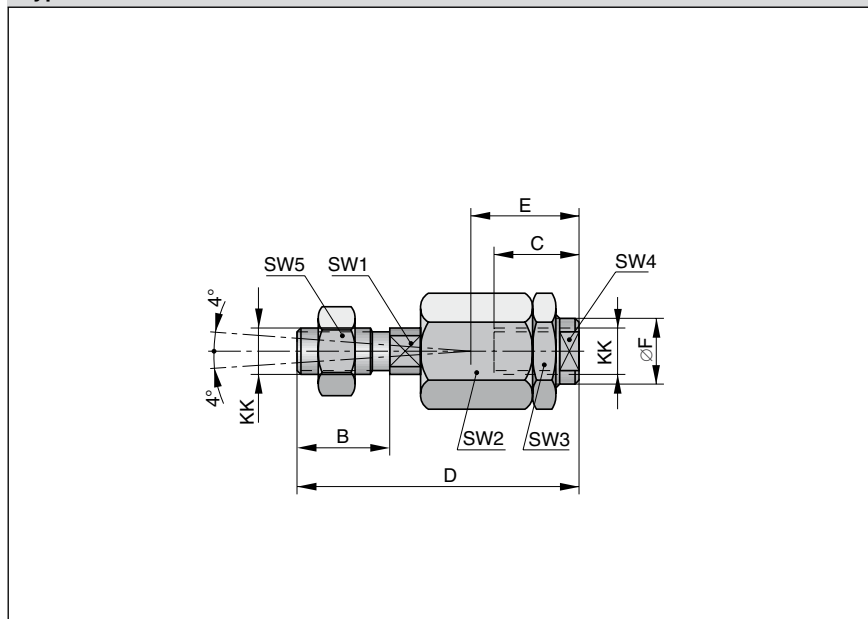
# Piston Rod Compensating Coupling



- Series OSP-E..SBR, ..STR
- OSP-E..SBR  
Ball screw actuator with internal plain bearing guide and piston rod
- OSP-E..STR  
Trapezoidal screw actuator with internal plain bearing guide and piston rod



## Piston Rod compensating coupling Type: AK-..



### Order Instructions, Dimension Table [mm], Weight

Series	Type	B	C	D $\pm$ 2	E	ØF	KK	SW1	SW2	SW3	SW4	SW5	Weight [kg]	Order No.
OSP-E25SBR, STR	AK-M 10x1.25	20	23	73	31	21,5	M10x1.25	12	30	30	19	17	0.218	KY 1129
OSP-E32SBR, STR	AK-M 10x1.25	20	23	73	31	21,5	M10x1.25	12	30	30	19	17	0.218	KY 1129
OSP-E50SBR, STR	AK-M 16x1.5	40	32	108	45	33,5	M16x1.5	19	41	41	30	30	0.637	KY 1133