

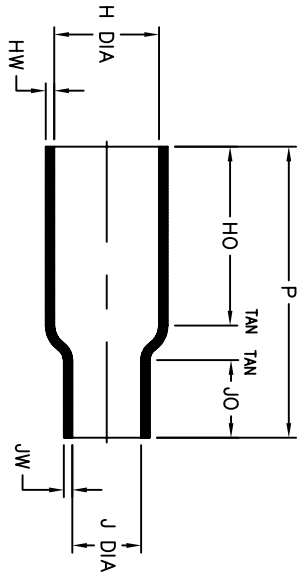
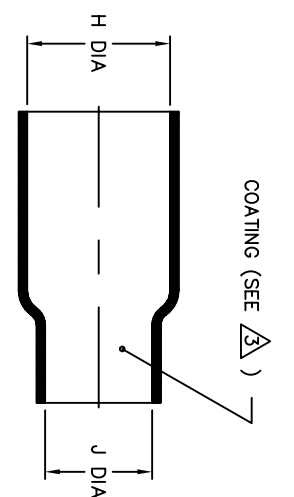
NOTES

- ALL DIMENSIONS ARE IN INCHES [MILLIMETERS]
- DIMENSIONS APPEARING IN TABLE ARE AS FOLLOWS:
 - a - AS SUPPLIED
 - b - AFTER UNRESTRICTED RECOVERY
- COATING (ADHESIVE): IS OPTIONAL AS SUPPLIED DIMENSIONS APPEARING IN TABLE ARE FOR UNCOATED PARTS. WHEN COATING IS ADDED, ENTRY DIAMETER WILL BE REDUCED BY .06 MAX.
- ORDERING INFORMATION:

BASE PART NUMBER 202E334 -XX -XX /XXX -0

MATERIAL DASH NUMBER
 -50 FLEXIBLE VITON (RT-1313)
 -51 FLEXIBLE EPB (RT-1321)
 -71 FLEXIBLE POLYOLEFIN (RT-1316)
 -770 NBCCS (RT-770 TYPE II)
 -780 NBCCS (RT-780 TYPE II)

ADHESIVE SLASH NUMBER
 SEE COMPATIBILITY CHART BELOW
 COLOR DESIGNATOR



AS SUPPLIED | AFTER UNRESTRICTED RECOVERY

TABLE OF DIMENSIONS

| PART DESCRIPTION | H | | J | | P | HO | JO | HW | JW |
|------------------|---------------|---------------|---------------|--------------|----------------|----------------|---------------|---------------|---------------|
| | MIN | MAX | MIN | MAX | | | | | |
| 202E334 | .50 [12.7] | .42 [10.7] | .44 [11.2] | .11 [2.8] | 2.50 [63.5] | 1.62 [41.1] | .62 [15.7] | .06 [1.52] | .06 [1.52] |
| 202E336 | .82 [20.8] | .42 [10.7] | .81 [20.6] | .21 [5.3] | 2.50 [63.5] | 1.62 [41.1] | .65 [16.5] | .06 [1.52] | .06 [1.52] |
| 202E344 | .87 [22.1] | .74 [18.8] | .44 [11.2] | .10 [2.5] | 2.10 [53.3] | 1.10 [27.9] | .62 [15.7] | .09 [2.29] | .06 [1.52] |
| 202E346 | .87 [22.1] | .74 [18.8] | .81 [20.6] | .31 [7.9] | 2.10 [53.3] | 1.10 [27.9] | .55 [14.0] | .09 [2.29] | .06 [1.52] |

CUSTOMER DRAWING

COMPATIBILITY CHART

| MATERIAL DASH NO. | ADHESIVE (COATING) SLASH NO. | ADHESIVE (COATING) S NO. |
|-------------------|------------------------------|--------------------------|
| -50 | N/A | N/A |
| -51 | /86; /164; /180 | S-1048; S-1124; S-1030 |
| -71 | /42; /86; /180 | S-1017; S-1048; S-1030 |
| -770 | N/A | N/A |
| -780 | N/A | N/A |

UNLESS OTHERWISE SPECIFIED, DIMENSIONS ARE IN INCHES, METRIC DIMENSIONS ARE IN BRACKETS. DECIMAL TOLERANCES

| | |
|-------------|-----------|
| XXX ± 0.005 | (0.13 mm) |
| XX ± 0.01 | (0.25 mm) |
| X ± 0.1 | (0.50 mm) |

ANGLE TOLERANCE: X ± 1 DEG.

TWO ELECTRONICS RESERVES THE RIGHT TO AMEND THIS DRAWING AT ANY TIME. USERS OF THIS DRAWING ARE ADVISED TO CHECK THE PRODUCT FOR THEIR APPLICATION.

© 2008-2009 Tyco Electronics Corporation. All rights reserved.

THIRD ANGLE PROJECTION

APPROVED: YUNGU YEN

STRAN

SIZE: B

CODE IDENT. NO.: 06090

DWG. NO.: 202E334thr346

DO NOT SCALE THIS DRAWING.

SHEET 1 OF 1

Tyco Electronics

Roychem Molded Parts
 305 Constitution Dr
 Menlo Park, CA 94025

BOOT, STRAIGHT

REVISIONS

| LTR | DESCRIPTION | DATE |
|-----|---------------|------------|
| T | ECO-09-016592 | 07/15/2009 |