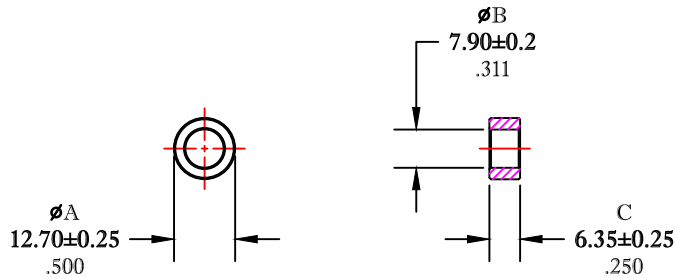


\*\* Not all features are shown in this drawing. For more detailed information, please contact your Fair-Rite representative.

UNCONTROLLED ~CATALOG~ DRAWING

SIZE	PART NO.	REV.
B	5975001101	~



DIMENSIONS  
**BOLD NUMBERS ARE IN MILLIMETERS**  
 LIGHT NUMBERS ARE IN INCHES

ELECTRICAL SPECIFICATIONS						
$\Sigma L/A(\text{mm}^{-1})$	$l_e$ (mm)	$A_e$ (mm <sup>2</sup> )	$V_e$ (mm <sup>3</sup> )	$L_o$ (nH)	$A_L$ (nH) @10kHz <10gauss	$\tan \delta/\mu_i$ @100kHz 1gauss
2.0842	31.2	15.0	466	0.603	3000±20%	≤20X10E-6

- NOTES:
- 1 - BURNISH TO REMOVE SHARP EDGES.
  - 2 - ELECTRICAL TESTING TO BE PERFORMED AS PER FAIR-RITE PRODUCTS CORP. SOP# ELC-45.

FR# 75

<b>FAIR-RITE PRODUCTS CORP.</b>					
TITLE TOROID					
DRAWN BY J.SERENCSICS	DATE 07-17-2018	SIZE	PART NO.	REV.	
CHKD BY		B	5975001101	~	
APPRVD BY		SCALE	NONE	SHEET 1 of 1	