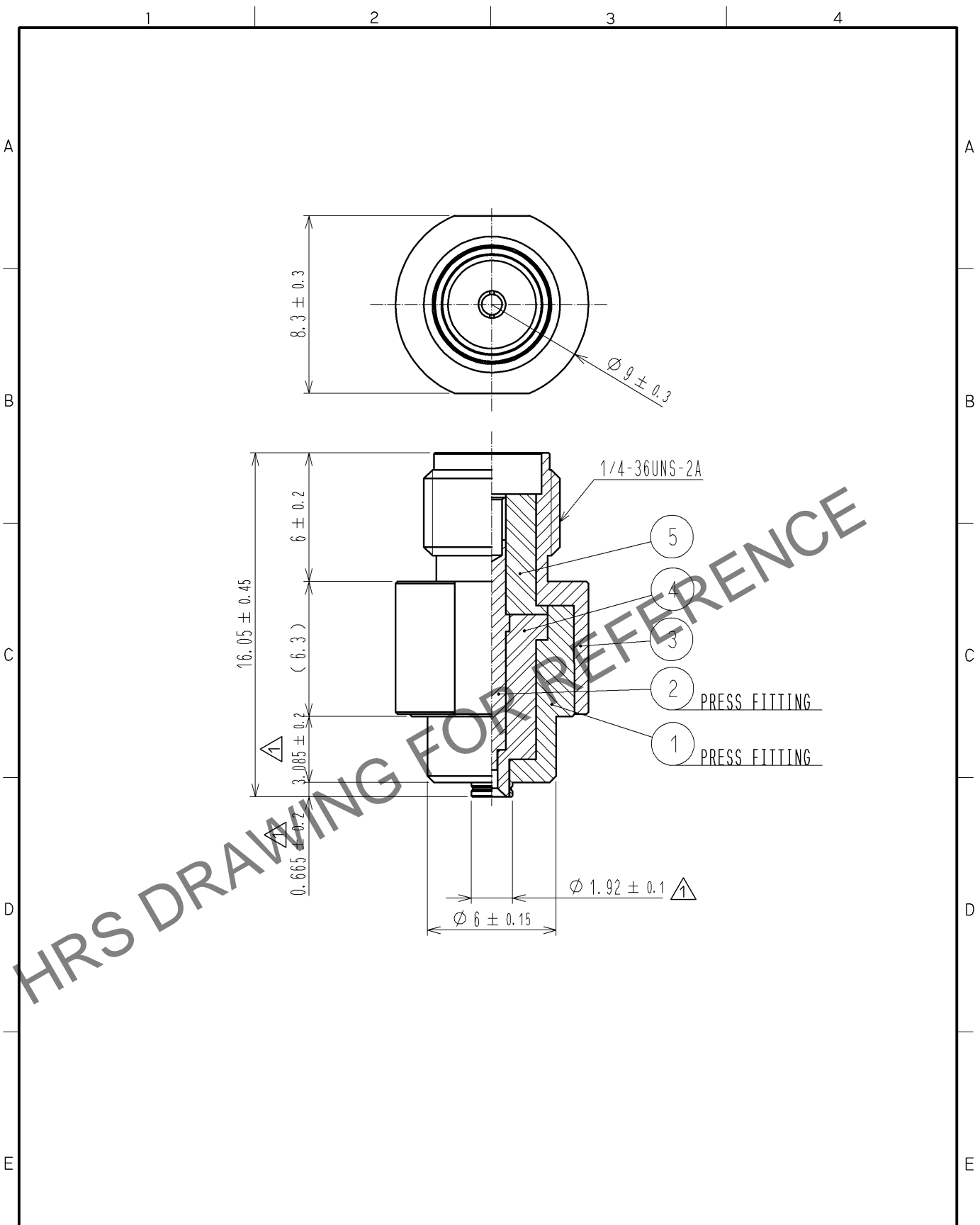


Jul.1.2024 Copyright 2024 HIROSE ELECTRIC CO., LTD. All Rights Reserved.  
 In case of consideration for using Automotive equipment / device which demand high reliability, kindly contact our sales window correspondents.



NO.	MATERIAL	FINISH	REMARKS	NO.	MATERIAL	FINISH	REMARKS
3	STAINLESS	PASSIVATE		5	PTFE		
2	BERYLLIUM COPPER	GOLD PLATING		4	PTFE		
1	STAINLESS	PASSIVATE					

UNITS	SYMBOLS	SCALE	COUNT	DESCRIPTION OF REVISIONS	DESIGNED	CHECKED	DATE
mm		4 : 1	3	DIS-J-001163	RI. SATO	TY. OZAKI	10.07.20

<b>HIROSE ELECTRIC CO., LTD.</b>	APPROVED : KJ. KAWAMURA	05.01.05	DRAWING NO.	EDC4-180354-00
	CHECKED : RZ. KANO	05.01.05	PART NO.	MS-156R-HRMJ-1
	DESIGNED : KH. HIDA	05.01.05	CODE NO.	CL358-0188-8-00
	DRAWN : KH. HIDA	05.01.05		