



CDF600-2100

Connection Device Fieldbus

4DPROCONNECTIVITY

SICK
Sensor Intelligence.



Ordering information

Type	Part no.
CDF600-2100	1058965

Other models and accessories → www.sick.com/Connection_Device_Fieldbus



Detailed technical data

Features

Brief description	Fieldbus proxy/gateway for connecting identification sensors to PROFIBUS-DP networks (PROFIBUS interface: 2 x M12, male connector/female connector, 5-pin)
Supported products	Lector® series CLV61x - CLV65x CLV69x RFID read/write device Mobile handheld scanners
Cloning module support (CMC)	Integrated
Supports display module (CMD)	No
Supports power supply module (CMP)	No
Supports fieldbus gateway (CMF)	No

Mechanics/electronics

Connection type	1 x 15-pin D Sub HD female connector (DEVICE) 1 x 5-pin M12 male connector (POWER) 1 x 5-pin M12 female connector (EXT. IN1) 1 x 5-pin M12 male connector (PB IN) 1 x 5-pin M12 female connector (PB OUT) 1 x USB female connector micro B (AUX)
Supply voltage	(10 V DC ... 30 V DC)
Power consumption	< 5 W, if no sensor is connected and the digital input is not connected
Housing	Aluminum (unpainted)
Housing color	Aluminum (unpainted)
Enclosure rating	IP65
Protection class	III
Weight	+ 385 g
Dimensions (L x W x H)	207 mm x 49.5 mm x 40.7 mm
Scanner connection	RS-232

Interfaces

Serial	✓, RS-232
Function	AUX
Data transmission rate	57.6 kBaud

CAN		✓
	Remark	Depending on sensor connected
PROFIBUS DP		✓, DPV0
	Function	Slave DPV0
	Data transmission rate	9.6 kbit/s ... 12 Mbit/s, Automatic detection
Digital inputs		1
Digital outputs		0
Optical indicators		4 LEDs
Configuration software		SOPAS ET

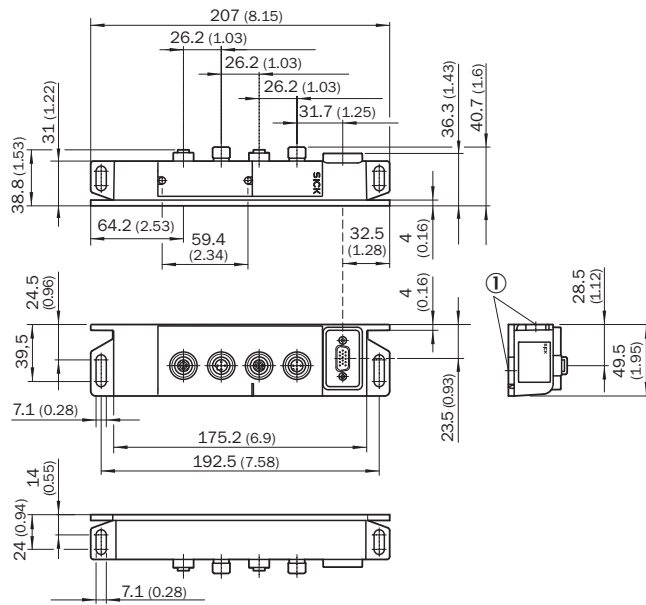
Ambient data

Electromagnetic compatibility (EMC)	EN 61000-6-3/A1:2011-03 / EN 61000-6-2:2005-08
Vibration resistance	EN 60068-2-6:2008-02
Shock resistance	EN 60068-2-27:2009-05
Ambient operating temperature	-35 °C ... +50 °C
Storage temperature	-35 °C ... +70 °C
Permissible relative humidity	< 90 %, Non-condensing

Classifications

eCl@ss 5.0	27242208
eCl@ss 5.1.4	27242608
eCl@ss 6.0	27242608
eCl@ss 6.2	27242608
eCl@ss 7.0	27242608
eCl@ss 8.0	27242608
eCl@ss 8.1	27242608
eCl@ss 9.0	27242608
eCl@ss 10.0	27242608
eCl@ss 11.0	27242608
eCl@ss 12.0	27242608
ETIM 5.0	EC001604
ETIM 6.0	EC001604
ETIM 7.0	EC001604
ETIM 8.0	EC001604
UNSPSC 16.0901	32151705

Dimensional drawing (Dimensions in mm (inch))



① For cylinder head screw M6 x 12

Recommended accessories

Other models and accessories → www.sick.com/Connection_Device_Fieldbus

	Brief description	Type	Part no.
Plug connectors and cables			
	Head A: Flying leads Head B: Flying leads Cable: PROFIBUS DP, PUR, shielded	LTG-2102-MW	6021355
	Head A: female connector, M12, 5-pin, straight, A-coded Head B: Flying leads Cable: Sensor/actuator cable, PUR, halogen-free, shielded, 5 m	YF2A25-050UB6XLEAX	2095733
	Head A: male connector, USB-A Head B: male connector, Micro-B Cable: USB 2.0, unshielded, 2 m	USB cable	6036106
	Head A: female connector, M12, 17-pin, straight Head B: male connector, D-Sub-HD, 15-pin, straight Cable: Power, serial, CAN, digital I/Os, shielded, 3 m	YF2Z1D-030XXMHDAC	2055420

SICK AT A GLANCE

SICK is one of the leading manufacturers of intelligent sensors and sensor solutions for industrial applications. A unique range of products and services creates the perfect basis for controlling processes securely and efficiently, protecting individuals from accidents and preventing damage to the environment.

We have extensive experience in a wide range of industries and understand their processes and requirements. With intelligent sensors, we can deliver exactly what our customers need. In application centers in Europe, Asia and North America, system solutions are tested and optimized in accordance with customer specifications. All this makes us a reliable supplier and development partner.

Comprehensive services complete our offering: SICK LifeTime Services provide support throughout the machine life cycle and ensure safety and productivity.

For us, that is “Sensor Intelligence.”

WORLDWIDE PRESENCE:

Contacts and other locations –www.sick.com