



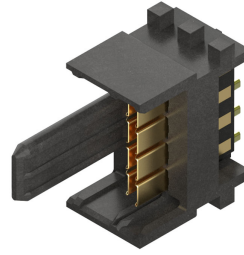
Part Number : [2033879011](#)

Product Description : Impel Test Cable Assembly, Crossover, 0.70m Length

Series Number : 203387

Status : Active

Product Category : High-Speed I/O Cable Assemblies



Documents & Resources

Drawings

[Drawing_2033879011_sd.pdf](#)

Product Environment Compliance

Compliance

GADSL/IMDS	Not Relevant
China RoHS	Not Relevant
EU ELV	Not Relevant
Low-Halogen Status	Not Relevant
REACH SVHC	Not Relevant
EU RoHS	Compliant per EU 2015/863

Multiple Part Product Compliance Statements

- Eu RoHS
- REACH SVHC
- Low-Halogen

Multiple Part Industry Compliance Documents

- IPC 1752A Class C
- IPC 1752A Class D
- Molex Product Compliance Declaration
- IEC-62474
- chemSHERPA (xml)

EU RoHS Certificate of Compliance

Part Details

General

Status	Active
Category	High-Speed I/O Cable Assemblies
Series	203387
Description	Impel Test Cable Assembly, Crossover, 0.70m Length
Assembly Configuration	Dual Ended Connectors
Connector to Connector	Impel-to-Impel
Product Name	Impel
Type	Pluggable
UPC	191128750714

Physical

Cable Bundling	None
Cable Length	0.70m
Circuits (Loaded)	16
Circuits (maximum)	16
Color - Resin	Black
Gender	Male-Male
Material - Metal	Copper Alloy
Material - Plating Mating	Gold
Material - Resin	Liquid Crystal Polymer
Net Weight	5.850/g
Packaging Type	Bag
Release Style	N/A
Single Ended	No
Wire/Cable Type	Twinax
Wire Size (AWG)	30