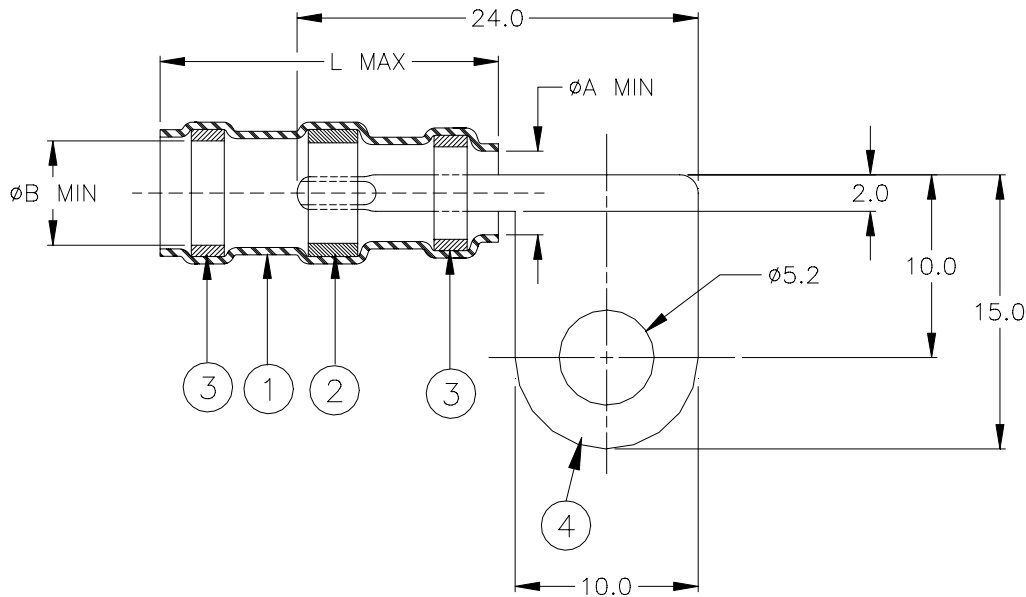


## SPECIFICATION CONTROL DRAWING



Product Revision		Product Dimensions			Cable Dimensions		
Product Name		ØA min	ØB min	L max	ØE min	ØG max	J±0.5 (J±0.020)
B-150-05-F	B	4.3 (0.169)	4.8 (0.189)	18.5 (0.728)	2.0 (0.078)	4.3 (0.169)	6.5 (0.256)
B-150-07-F	B	6.8 (0.267)	7.3 (0.287)	21.0 (0.827)	3.3 (0.130)	6.8 (0.267)	8.0 (0.315)

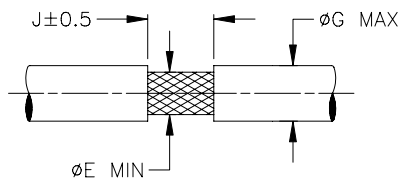
### MATERIALS

1. INSULATION SLEEVE: Heat-shrinkable, transparent clear, radiation cross-linked modified polyolefin.
2. SOLDER PREFORM WITH FLUX.  
SOLDER: TYPE Cd18 per ANSI-J-STD-006.  
FLUX: TYPE ROM1 per ANSI-J-STD-004.
3. MELTABLE SEALING RINGS: Thermally stabilized thermoplastic.
4. GROUNDING BAR: Tin plated brass alloy.

### APPLICATION

1. These controlled soldering, grounding devices are designed for termination of a bare or tin plated copper shield on a cable having an insulation rated for at least +85°C.
2. Temperature range: -55°C to +125°C.
3. For installation procedure and application equipment, consult RPIP-688-02.

For best results, prepare the cable as shown:



<b>Raychem</b>		<b>THERMOFIT DEVICES</b>	Raychem Corporation 300 Constitution Drive Menlo Park, CA 94025 USA	TITLE: <b>SOLDERSLEEVE WITH FLAG TERMINAL</b>			
UNLESS OTHERWISE SPECIFIED DIMENSIONS ARE IN MILLIMETERS. INCHES DIMENSIONS ARE BETWEEN BRACKETS.				DOCUMENT NO: <b>B-150-XX-F</b>			
TOLERANCES: 0.00 N/A 0.0 N/A 0 N/A	ANGLES: N/A  ROUGHNESS IN MICRON	Raychem reserves the right to amend this drawing at any time. Users should evaluate the suitability of the product for their application.		DCR NUMBER: <b>D990885</b>		REPLACES: <b>D990628</b>	
PREPARED BY: <b>M. FORONDA</b>	DATE: <b>10/20/99</b>	REV. <b>SEE TABLE</b>	DOC ISSUE: <b>1</b>	SCALE: <b>None</b>	SIZE: <b>A</b>	SHEET: <b>1 of 1</b>	

If this document is printed it becomes uncontrolled. Check for the latest revision.