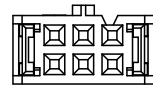
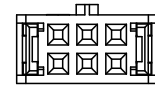
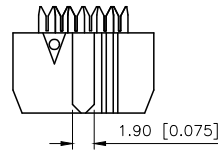
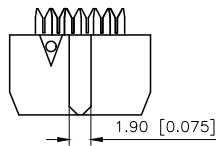
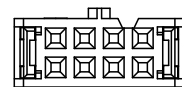
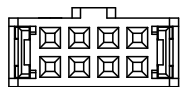
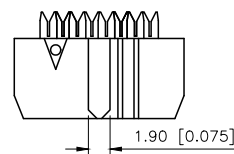
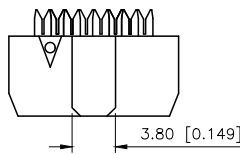


REVISIONS					
REV.	ECN NO.	LOCATION	DESCRIPTION	DATE	DESIGN
A0	N/A		INITIAL RELEASE	/	/
A1	N/A		图面升级整理图面	2024.12.17	阿树



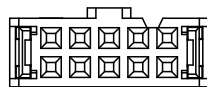
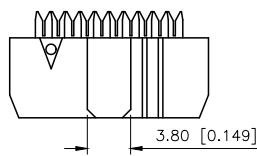
2x03Pin 小鼻、无槽
Type A

2x03Pin 小鼻、单槽
Type B

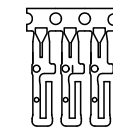


2x04Pin 大鼻、无槽
Type A

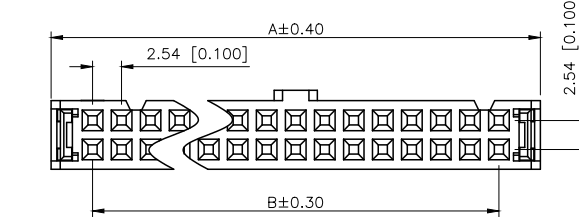
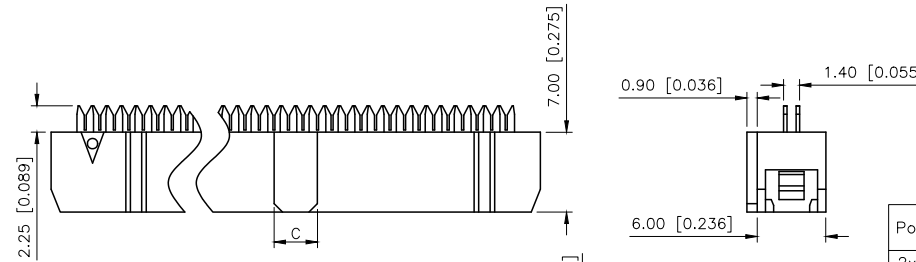
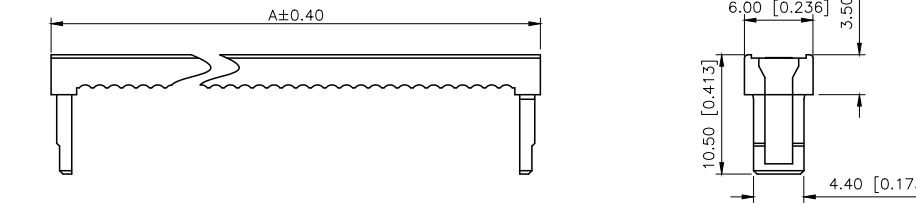
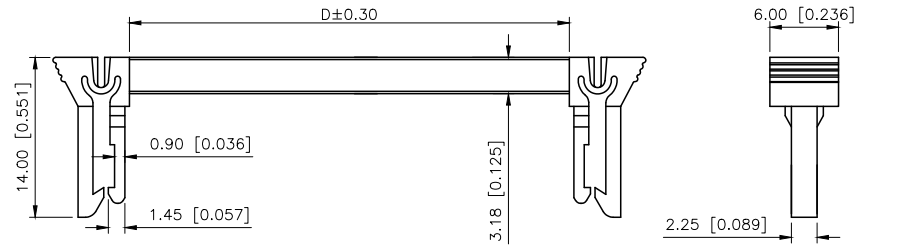
2x04Pin 小鼻、单槽
Type B



2x05~2x06Pin
大鼻、单槽



一般型端子



2x07~2x32Pin 双槽

Specifications:

规格:

- Voltage rating: 250V AC/DC
- 额定电压: 250V AC/DC
- Current rating: 1A AC/DC
- 额定电流: 1A AC/DC
- Withstanding voltage: 500V AC/minute
- 耐受电压: 500V AC/分钟
- Temperature range: -40°C +125°C
- 温度范围: -40°C +125°C
- Insulation resistance: 1000MΩ min
- 绝缘电阻: 1000MΩ Min
- Contact resistance: 20mΩ Max
- 接触电阻: 20mΩ Max

PART NO.:

X9555 H3-2xXX X-PT V01
① ② ③ ④ ⑤ ⑥

- ① Series No
- ② Category: H3—Two piece with bow button
- ③ Row No—Pin No: 2xXX—2x03P~2x32P
- ④ Special No: Type A or Type B
Blank—Except for special Pin bits
- ⑤ Material: PT—PBT UL94V-0
- ⑥ Plating: V01—Gold Flash over Nickel

Poles	Dimensions(mm)				Poles	Dimensions(mm)			
	A	B	C	D		A	B	C	D
2x03	12.32	5.08	1.90	8.02	2x13	37.72	30.48		33.42
2x04	14.86	7.62	1.9/3.8	10.56	2x15	42.80	35.56		38.50
2x05	17.40	10.16	3.80	13.10	2x17	47.88	40.64		43.58
2x06	19.94	12.70		15.64	2x18	50.42	43.18		/
2x07	22.48	15.24		18.18	2x20	55.50	48.26	3.80	51.20
2x08	25.02	17.78		20.72	2x22	60.58	53.34		/
2x09	27.56	20.32		/	2x25	68.20	60.96		/
2x10	30.10	22.86		25.80	2x30	80.90	73.66		/
2x11	32.64	25.40		/	2x32	85.98	78.74		/
2x12	35.18	27.94		30.88					/

X9555H3-2xXX-PTV01	PBT	Brass	X9555W-A
X9555H3-2xXXX-PTV01			
PART NO	Material	Material(Pin)	Suitable XKB Wafer

AuGLAR	±5°
X.	±0.40
X.x	±0.30
X.xx	±0.20
X.xxx	±0.15
UNSPECIFIED TOLERANCES	



DESIGN	阿树	VIEW:		MODEL TYPE:	2.54mm Crimp Style Connector
CHECKED		UNIT:	mm/in	PART NO.:	X9555H3-2xXX-PTV01
APPROVED		SIZE:	A4	DWG NO.:	

XKB INDUSTRIAL PRECISION CO., LIMITED

SCALE	PAGE	REVISION
N/A	1/1	A1