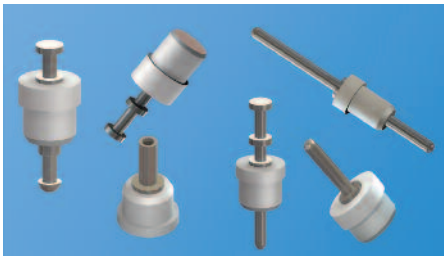


# PTFE INSULATED TERMINALS & PINS

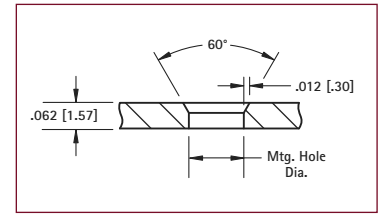


- Space saving design for high density packaging
- Outstanding Electrical, Mechanical, Thermal and Chemical properties
- Provides greater pull-out strength and high torque resistance
- Ideal for high quality terminal and connector applications
- Custom PTFE jacks manufactured to your specifications
- Other platings and bushing colors available upon request

## SPECIFICATIONS

**Terminal:** Brass, Tin Plate  
**Bushing:** White PTFE

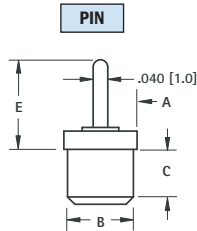
### Mounting Detail



## PINS



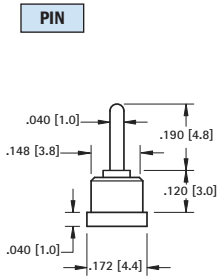
Top Mount



CAT. NO.	A	B	C	E	Mtg. Hole Dia.
<b>11065</b>	.125 (3.2)	.104 (2.6)	.089 (2.3)	.161 (4.1)	.091 (2.3)
<b>11066</b>	.125 (3.2)	.093 (2.4)	.100 (2.5)	.925 (23.5)	.086 (2.2)
<b>11067</b>	.172 (4.4)	.148 (3.8)	.100 (2.5)	.150 (3.8)	.136 (3.5)
<b>11068</b>	.172 (4.4)	.148 (3.8)	.075 (1.9)	.185 (4.7)	
<b>11069</b>	.172 (4.4)	.148 (3.8)	.050 (1.3)	.260 (6.6)	
<b>11070</b>	.172 (4.4)	.148 (3.8)	.075 (1.9)	.260 (6.6)	
<b>11071</b>	.172 (4.4)	.148 (3.8)	.100 (2.5)	.250 (6.4)	
<b>11072</b>	.172 (4.4)	.148 (3.8)	.160 (4.1)	.250 (6.4)	
<b>11073</b>	.172 (4.4)	.148 (3.8)	.100 (2.5)	.490 (12.4)	
<b>11074</b>	.172 (4.4)	.148 (3.8)	.100 (2.5)	.585 (14.9)	

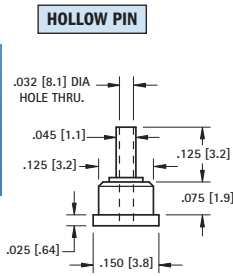


Bottom Mount



**CAT. NO. 11075**

Mtg. Hole  
.136 (3.5) Dia.

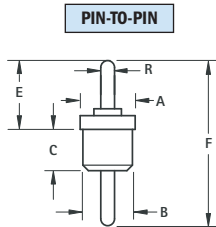


**CAT. NO. 11076**

Mtg. Hole  
.113 (2.9) Dia.



Feed-Thru

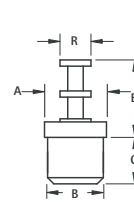


CAT. NO.	A	B	C	E	F	R	Mtg. Hole Dia.
<b>11150</b>	.093 (2.4)	.075 (1.9)	.100 (2.5)	.315 (8.0)	.550 (13.9)	.030 (7.6)	.069 (1.8)
<b>11151</b>	.125 (3.2)	.093 (2.4)	.100 (2.5)	.196 (5.0)	.453 (11.5)	.040 (1.0)	.086 (2.2)
<b>11152</b>	.125 (3.2)	.093 (2.4)	.100 (2.5)	.250 (6.4)	.515 (13.1)	.040 (1.0)	.086 (2.2)
<b>11153</b>	.125 (3.2)	.093 (2.4)	.100 (2.5)	.250 (6.4)	.443 (11.3)	.040 (1.0)	.113 (2.9)
<b>11154</b>	.150 (3.8)	.125 (3.2)	.100 (2.5)	.250 (6.4)	.443 (11.3)	.040 (1.0)	.113 (2.9)
<b>11155</b>	.172 (4.4)	.148 (3.8)	.100 (2.5)	.250 (6.4)	.515 (13.1)	.040 (1.0)	.136 (3.5)
<b>11156</b>	.172 (4.4)	.148 (3.8)	.110 (2.8)	.260 (6.6)	.535 (13.6)	.040 (1.0)	.136 (3.5)
<b>11157</b>	.172 (4.4)	.148 (3.8)	.250 (6.4)	.250 (6.4)	.710 (18.0)	.040 (1.0)	.136 (3.5)
<b>11158</b>	.172 (4.4)	.148 (3.8)	.250 (6.4)	.303 (7.7)	.719 (18.3)	.040 (1.0)	.136 (3.5)
<b>11159</b>	.172 (4.4)	.148 (3.8)	.160 (4.1)	.250 (6.4)	.725 (18.4)	.040 (1.0)	.136 (3.5)
<b>11160</b>	.172 (4.4)	.148 (3.8)	.170 (4.3)	.250 (6.4)	.630 (16.0)	.040 (1.0)	.136 (3.5)

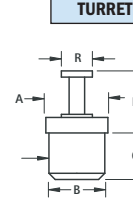
## SOLDER TERMINALS



Top Mount



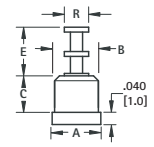
**FIG. 1**



**FIG. 2**



Bottom Mount



**FIG. 3**

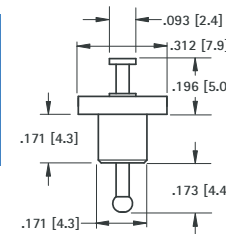
CAT. NO.	FIG.	A	B	C	E	R	Mtg. Hole Dia.
<b>11300</b>	1	.125 (3.2)	.093 (2.4)	.100 (2.5)	.210 (5.3)	.060 (1.5)	.086 (2.2)
<b>11301</b>	1	.125 (3.2)	.093 (2.4)	.080 (2.0)	.250 (6.4)	.080 (2.0)	.086 (2.2)
<b>11302</b>	1	.125 (3.2)	.093 (2.4)	.100 (2.5)	.250 (6.4)	.080 (2.0)	.086 (2.2)
<b>11303</b>	1	.172 (4.4)	.148 (3.8)	.140 (3.6)	.194 (4.9)	.093 (2.4)	.136 (3.5)
<b>11304</b>	1	.172 (4.4)	.148 (3.8)	.110 (2.8)	.250 (6.4)	.080 (2.0)	.136 (3.5)
<b>11305</b>	1	.172 (4.4)	.148 (3.8)	.125 (3.2)	.303 (7.7)	.080 (2.0)	.136 (3.5)
<b>11306</b>	1	.172 (4.4)	.148 (3.8)	.165 (4.2)	.290 (7.4)	.093 (2.4)	.136 (3.5)
<b>11307</b>	1	.172 (4.4)	.148 (3.8)	.250 (6.4)	.290 (7.4)	.093 (2.4)	.136 (3.5)
<b>11308</b>	1	.172 (4.4)	.148 (3.8)	.165 (4.2)	.437 (11.1)	.093 (2.4)	.136 (3.5)
<b>11320</b>	2	.172 (4.4)	.148 (3.8)	.100 (2.5)	.150 (3.8)	.080 (2.0)	.136 (3.5)
<b>11321</b>	2	.187 (4.8)	.164 (4.2)	.150 (3.8)	.370 (9.4)	.090 (2.3)	.152 (3.9)
<b>11322*</b>	2	.150 (3.8)	.125 (3.2)	.110 (2.8)	.180 (4.6)	.090 (2.3)	.113 (2.9)
<b>11310</b>	3	.125 (3.2)	.093 (2.4)	.100 (2.5)	.170 (4.3)	.060 (1.5)	.086 (2.2)
<b>11311</b>	3	.172 (4.4)	.148 (3.8)	.100 (2.5)	.210 (5.3)	.080 (2.0)	.136 (3.5)
<b>11312</b>	3	.187 (4.8)	.171 (4.3)	.155 (3.9)	.210 (5.3)	.080 (2.0)	.158 (4.0)

\*Hollow Turret

### TURRET-TO-TURRET



Feed-Thru

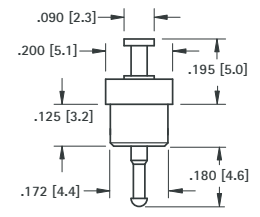


**CAT. NO. 11250**

Mtg. Hole  
.158 (4.0) Dia.



Feed-Thru



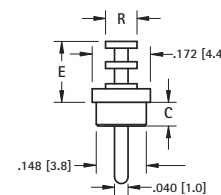
**CAT. NO. 11251**

Mtg. Hole  
.158 (4.0) Dia.

### TURRET-TO-PIN



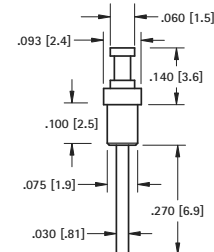
Feed-Thru



CAT. NO.	C	E	R	Mtg. Hole Dia.
<b>11216</b>	.100 (2.5)	.250 (6.4)	.080 (2.0)	.136 (3.5)
<b>11217</b>	.230 (5.8)	.375 (9.5)	.093 (2.4)	.136 (3.5)



Feed-Thru



**CAT. NO. 11218**

Mtg. Hole  
.066 (1.7) Dia.

PTFE INSULATED TERMINALS & PINS