



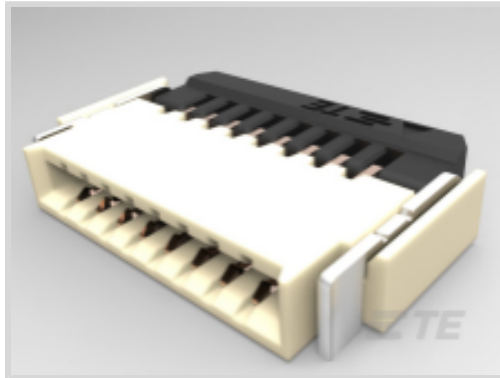
FPC

TE Internal #: 1-2328702-0

.5 mm Centerline, Zero Insertion Force (ZIF), Right Angle, Surface Mount, Back Flip-Lock Actuator, Gold Flash, 10 Position, FPC Connectors

[View on TE.com >](#)

Connectors > PCB Connectors > Wire-to-Board Connectors > FFC, FPC & Ribbon Connectors > FPC Connectors



Centerline (Pitch): .5 mm

Mating Retention Type: **Zero Insertion Force (ZIF)**

PCB Mount Orientation: **Right Angle**

Contact Mating Location: **Dual Side**

Termination Method to PCB: **Surface Mount**

Features

Product Type Features

| | |
|-----------------------------------|-----------------------|
| PCB Connector Assembly Type | PCB Mount Receptacle |
| Connector Product Type | Connector Assembly |
| Connector System | Wire-to-Board |
| Connector & Contact Terminates To | Printed Circuit Board |
| FPC Actuator Type | Back Flip-Lock |

Configuration Features

| | |
|-----------------------------------|-------------|
| Compatible With Wire & Cable Type | FFC, FPC |
| Number of Rows | 1 |
| PCB Mount Orientation | Right Angle |
| Number of Positions | 10 |

Electrical Characteristics

| | |
|-------------------|--------|
| Operating Voltage | 50 VAC |
|-------------------|--------|

Body Features

| | |
|-----------------------|---------|
| Actuator Color | Black |
| Primary Product Color | Natural |

Contact Features

| | |
|----------------|--------|
| Contact Layout | Inline |
|----------------|--------|



| | |
|----------------------|---------------|
| Contact Shape & Form | Standard Flat |
|----------------------|---------------|

| | |
|---|------|
| PCB Contact Termination Area Plating Material | Gold |
|---|------|

| | |
|-----------------------|--------------|
| Contact Base Material | Copper Alloy |
|-----------------------|--------------|

| | |
|------------------------------|------|
| Contact Current Rating (Max) | .5 A |
|------------------------------|------|

| | |
|-------------------------|-----------|
| Contact Mating Location | Dual Side |
|-------------------------|-----------|

| | |
|--------------------------------------|------------|
| Contact Mating Area Plating Material | Gold Flash |
|--------------------------------------|------------|

Termination Features

| | |
|---------------------------|---------------|
| Termination Method to PCB | Surface Mount |
|---------------------------|---------------|

Mechanical Attachment

| | |
|------------------|------|
| Mating Alignment | With |
|------------------|------|

| | |
|-----------------------|----------------------------|
| Mating Retention Type | Zero Insertion Force (ZIF) |
|-----------------------|----------------------------|

Housing Features

| | |
|------------------|------------------------------|
| Housing Material | LCP (Liquid Crystal Polymer) |
|------------------|------------------------------|

| | |
|--------------------|-------|
| Centerline (Pitch) | .5 mm |
|--------------------|-------|

Dimensions

| | |
|------------------|------|
| Connector Length | 7 mm |
|------------------|------|

| | |
|------------------------------|---------------|
| Accepts Flex Cable Thickness | .3 mm[.01 in] |
|------------------------------|---------------|

| | |
|------------------|---------------|
| Connector Height | 1 mm[.039 in] |
|------------------|---------------|

Usage Conditions

| | |
|-----------------------------|---------------------------|
| Operating Temperature Range | -40 – 85 °C[-40 – 185 °F] |
|-----------------------------|---------------------------|

Packaging Features

| | |
|------------------|-------------|
| Packaging Method | Tape & Reel |
|------------------|-------------|

Product Compliance

[For compliance documentation, visit the product page on TE.com>](#)

| | |
|------------------------------|-----------|
| EU RoHS Directive 2011/65/EU | Compliant |
|------------------------------|-----------|

| | |
|-----------------------------|-----------|
| EU ELV Directive 2000/53/EC | Compliant |
|-----------------------------|-----------|

| | |
|---|---|
| China RoHS 2 Directive MIIT Order No 32, 2016 | No Restricted Materials Above Threshold |
|---|---|

| | |
|--|---|
| EU REACH Regulation (EC) No. 1907/2006 | Current ECHA Candidate List: JUNE 2024 (241) Candidate List Declared Against: JUNE 2024 (241) Does not contain REACH SVHC |
|--|---|



| | |
|---------------------------|---|
| Halogen Content | Low Halogen - Br, Cl, F, I < 900 ppm per homogenous material. Also BFR/CFR/PVC Free |
| Solder Process Capability | Not reviewed for solder process capability |

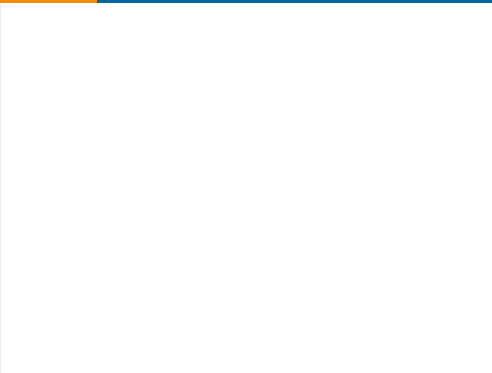
Product Compliance Disclaimer

This information is provided based on reasonable inquiry of our suppliers and represents our current actual knowledge based on the information they provided. This information is subject to change. The part numbers that TE has identified as EU RoHS compliant have a maximum concentration of 0.1% by weight in homogenous materials for lead, hexavalent chromium, mercury, PBB, PBDE, DBP, BBP, DEHP, DIBP, and 0.01% for cadmium, or qualify for an exemption to these limits as defined in the Annexes of Directive 2011/65/EU (RoHS2). Finished electrical and electronic equipment products will be CE marked as required by Directive 2011/65/EU. Components may not be CE marked. Additionally, the part numbers that TE has identified as EU ELV compliant have a maximum concentration of 0.1% by weight in homogenous materials for lead, hexavalent chromium, and mercury, and 0.01% for cadmium, or qualify for an exemption to these limits as defined in the Annexes of Directive 2000/53/EC (ELV). Regarding the REACH Regulation, the information TE provides on SVHC in articles for this part number is based on the latest European Chemicals Agency (ECHA) 'Guidance on requirements for substances in articles' posted at this URL: <https://echa.europa.eu/guidance-documents/guidance-on-reach>

Compatible Parts



TE Part # 1-1734592-0
FPC CONN. 0.5MM PITCH B/C, 10P



TE Part # 5-2328702-0
50 PIN 0.5MMP FPC CONN, BACK FLIP LOCK

Customers Also Bought



TE Part #6609117-6
6EGS1-2=F7860 S0



TE Part #5745354-4
37 PLUG RA/MS STD



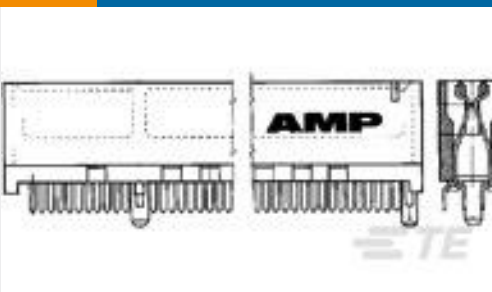
TE Part #4-1609155-1
PE0S0DM6E=C7105



TE Part #5-5530843-3
CONN SEC II 17 POS 100C/L



TE Part #5532600-4
CONN SEC II 31 POS 100 C/L R/A



TE Part #5650090-1
STANDARD EDGE .050 SERIES 56 DUAL ASSY



TE Part #2-2328724-5
25PIN 0.3MMP FPC CONNECTOR, FRONT FLIP



TE Part #2176364-7
RQ 0402 5K36 0.1% 10PPM 5K RL



Documents

CAD Files

[3D PDF](#)

3D

Customer View Model

[ENG_CVM_CVM_1-2328702-0_A.2d_dxf.zip](#)

English

Customer View Model

[ENG_CVM_CVM_1-2328702-0_A.3d_igs.zip](#)

English

Customer View Model

[ENG_CVM_CVM_1-2328702-0_A.3d_stp.zip](#)

English

By downloading the CAD file I accept and agree to the [Terms and Conditions](#) of use.

Datasheets & Catalog Pages

[1-1773959-7-FPC-Connectors-CN](#)

English

Product Specifications

[Product Specification](#)

English