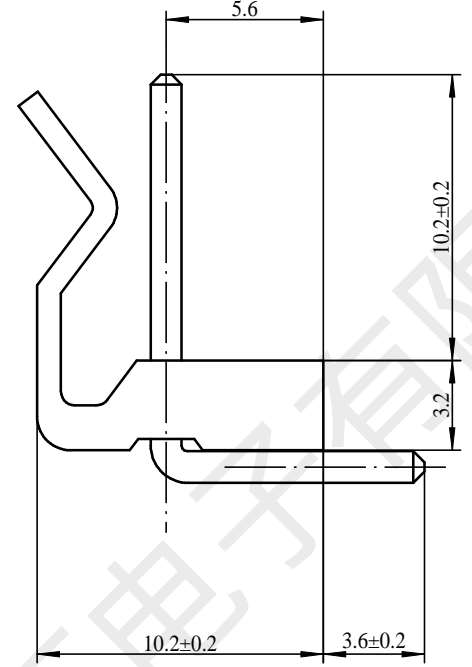
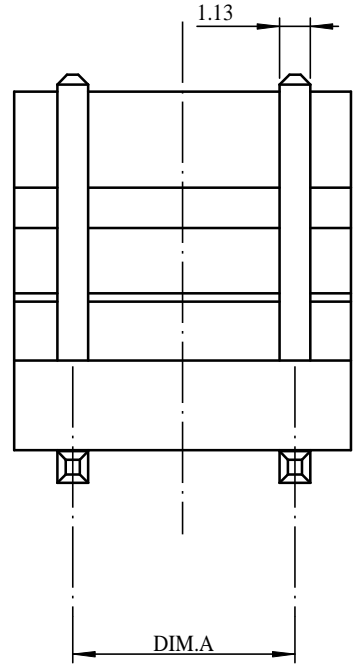
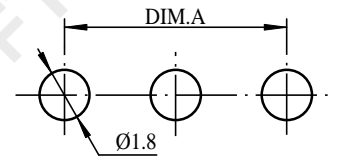
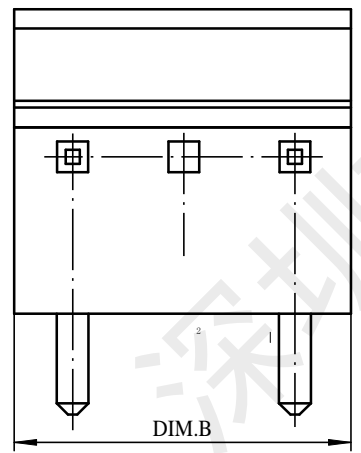


REV.	EC#	DESCRIPTION	DATE	DRAWN	CHECK	APPROVED
1.00		初版发行				



NUMBER OF PINS	DIM A	DIM B
11P	39.6	43.56
8P	27.72	31.68
7P	23.76	27.72
6P	19.8	23.76
5P	15.84	19.8
4P	11.88	15.84
3P	7.92	11.88
2P	3.96	7.92



PCB LAYOUT

GENERAL TOLERANCES			
DIM	TOL	DIM	DEG
X.		X°	±3.00°
X.X	±0.35	X.X°	±2.00°
X.XX	±0.25	X.XX°	±1.00°
X.XXX	±0.15	X.XXX°	

技术要求:

- 1) 材质:见附表;
- 2) 电镀:见附表;
- 3) 塑件表面平整、光洁、无毛刺、气泡、烧焦、变形、浇口无拉伤、多料或缺料等不良现象;
- 4) 端子表面无氧化、电镀不良等现象。

适应基板厚度: 1.2mm~1.6mm  
 温度范围: -25℃~85℃  
 额定电压: 250V AC/DC  
 额定电流: 7A  
 接触电阻: <0.01Ω  
 绝缘电阻: >1000MΩ  
 耐压: 1500V AC/minute

2	PIN	n PCS	材质:黄铜,电镀:镀亮锡60u"MIN
1	Housing	1 PCS	材质:PA66 (UL94V-0),颜色:本色
NO.	NAME	Q'TY	DESCRIPTION

**深圳市韩下电子有限公司**

DRAW :	黄彬	2018-04-22	TITLE:	针座	DRAW NAME:	
DESIGN:			SERIES:	1501 SERIES	HX CH3. 96-2P WZ	
CHECK:	张伟	2018-04-22	P/N:		DRAW NO.	
APPROVED	罗小春	2018-04-22	CUSTOMER DRAWING	REV. 1.00	SCALE	N/A
			UNIT:	mm	SHEET:	1/1