

TLF50201EL & TLF50211EL

2.2 MHz Step-Down Regulator 500 mA
Low quiescent current.

Application Board

16.07.2014



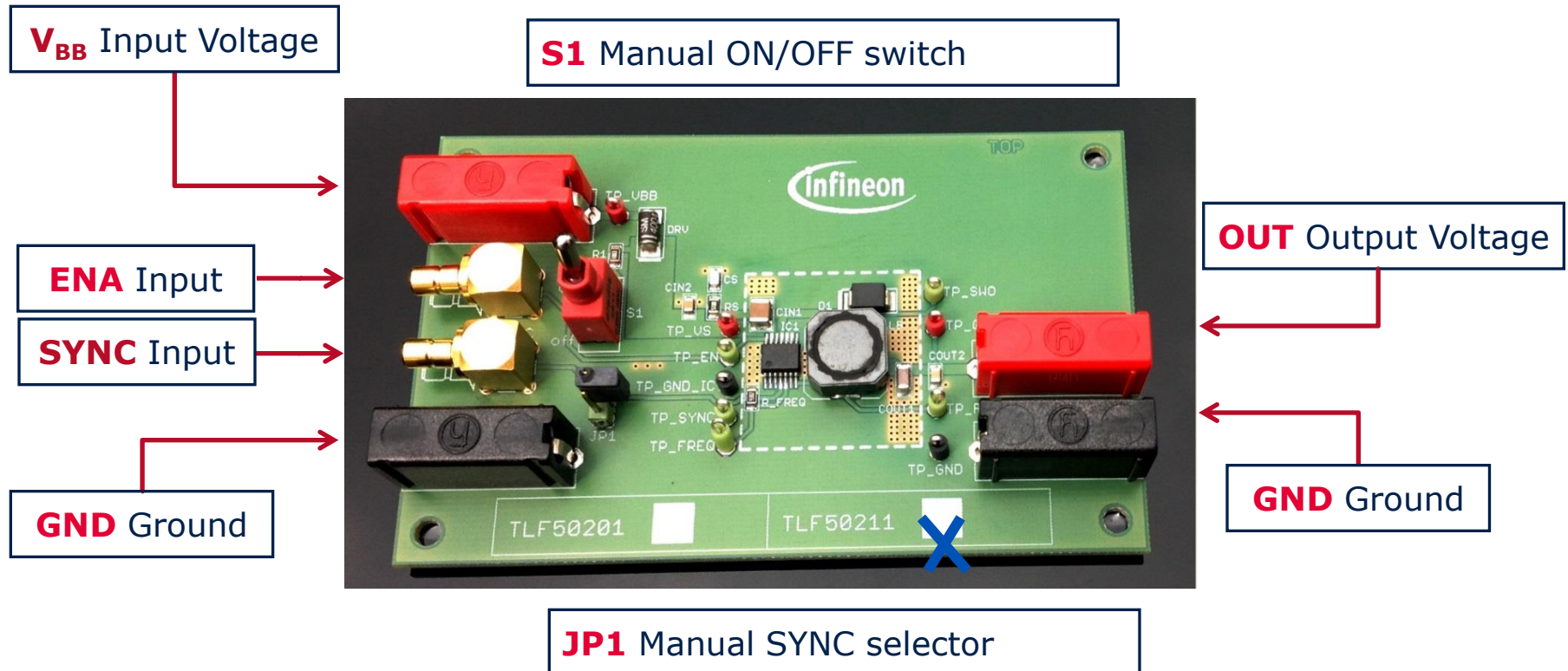
TLF50201EL & TLF50211EL Application Board Introduction



- This application board shall enable You to test the performance of the TLF50201EL and of the TLF50211EL
- 2.2 MHz Step-Down Regulator 500 mA, low quiescent current
- It is equipped with a TLF50211EL with fixed output voltage (5 V)
- The board offers the possibility to modify the schematic
- (please refer to datasheet)

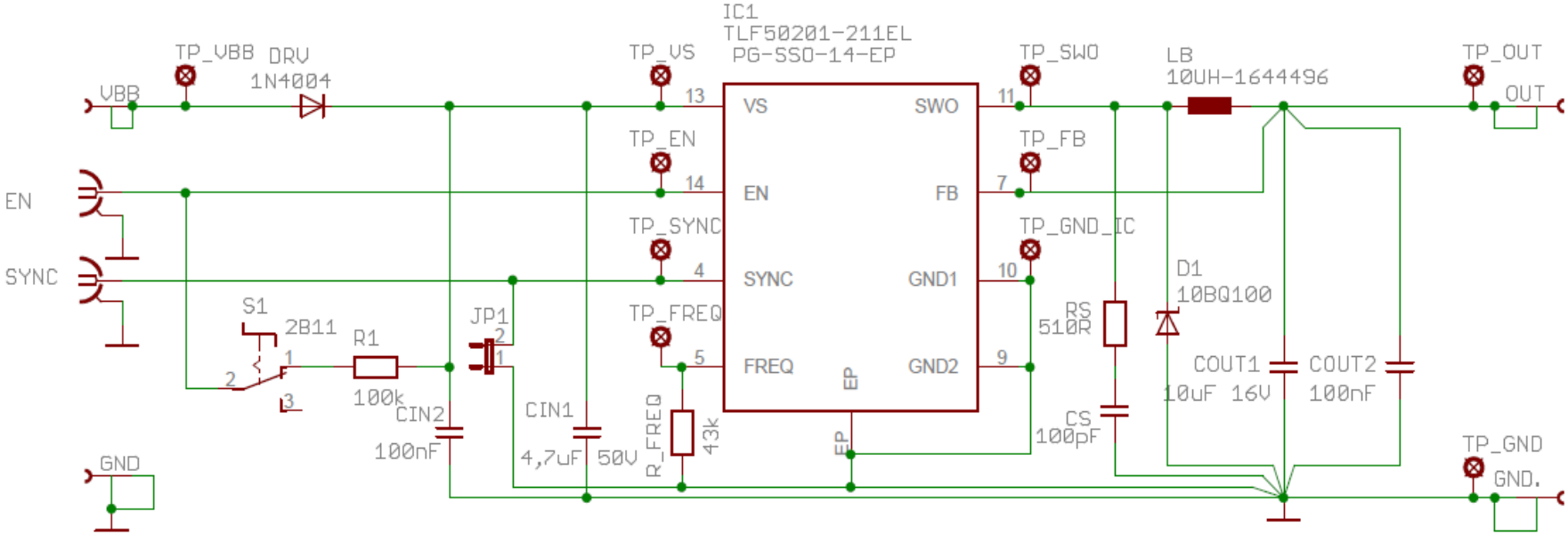
TLF50201EL & TLF50211EL Application Board: How to start

- Connect the Application Board as shown below for a basic Test:

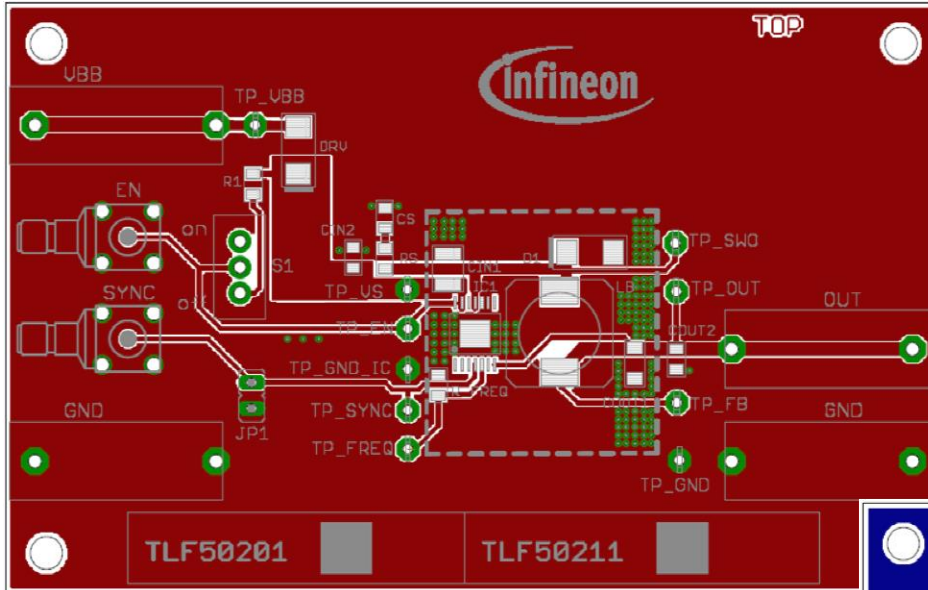


Application board ordering code: **SP000949234**

TLF50201EL & TLF50211EL Application Board Schematic

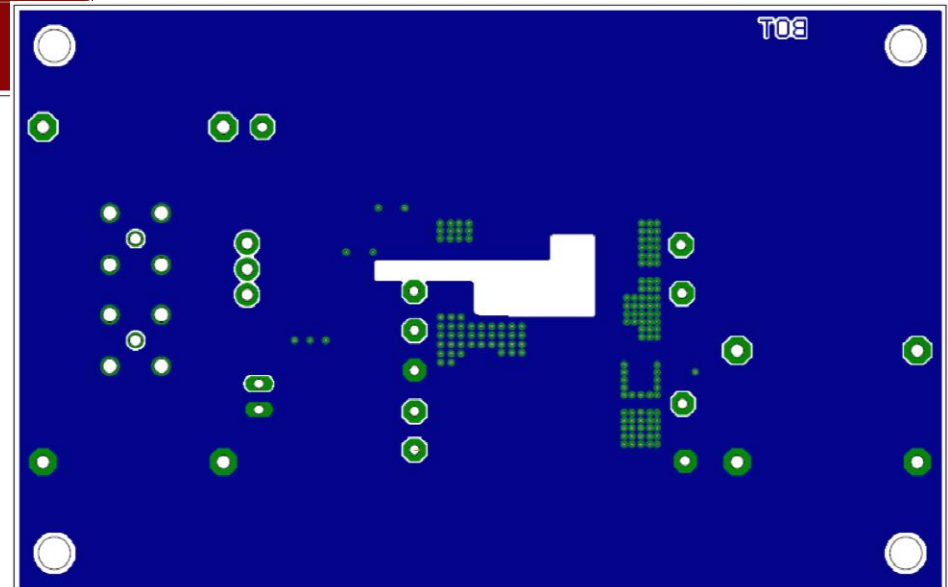


TLF50201EL & TLF50211EL Application Board Layout Details



TOP

BOTTOM



Gerber data on request



ENERGY EFFICIENCY MOBILITY SECURITY

Innovative semiconductor solutions for energy efficiency, mobility and security.



Mouser Electronics

Authorized Distributor

Click to View Pricing, Inventory, Delivery & Lifecycle Information:

[Infineon:](#)

[DEMOBOARDTLF50211ELTOBO1](#)