



QSFP/QSFP+

TE Internal #: 2053638-3

TE Internal Description: C/A, QSFP, 3M, P1-P2, UNEQUALIZED

QSFP to QSFP I/O Cable Assembly: 30 AWG

[View on TE.com >](#)

Cable Assemblies > Copper Cable Assemblies > Pluggable I/O Cable Assemblies > QSFP to QSFP I/O Cable Assembly: 30 AWG



Cable Assembly Type: **QSFP**

Cable Assembly (End A): **QSFP Plug**

Cable Assembly (End B): **QSFP Plug**

Wire Size: **.051 mm<sup>2</sup>**

[All QSFP to QSFP I/O Cable Assembly: 30 AWG \(1\)](#)

## Features

### Product Type Features

Latching Style	Slide Latch
Cable Assembly Category	High Speed
Cable Assembly Type	QSFP
Cable Assembly (End A)	QSFP Plug
Cable Assembly (End B)	QSFP Plug
Cable Style	Madison TurboTwin, Madison TurboTwin - Round Jacketed

### Configuration Features

Number of Positions	16
Number of Pairs	8
Number of Signal Positions	16

### Electrical Characteristics

Impedance	100 Ω
-----------	-------

### Signal Characteristics

Data Rate	10 Gb/s
-----------	---------

### Body Features

Strain Relief Type	Heat Shrink Tubing
Shield Material	Aluminum/Polyester Tape/Tin-Plated Copper Braid
Jacket Material	Flexible PVC
Cable Color	Black
Cable Flammability Rating	CL2
Equalized	No

### Contact Features

Contact Mating Area Plating Material	Gold
--------------------------------------	------

### Mechanical Attachment

Mating Alignment	Without
------------------	---------

### Housing Features

Housing Material	Zinc Die
------------------	----------

### Dimensions

Wire Size	.051 mm <sup>2</sup>
Outside Cable Diameter	6.48 mm [.255 in]

### Operation/Application

Shielded	Yes
Halogen Free	No

### Other

Cable Assembly Configuration	Double Ended
Cable Assembly Length	3 m [9.842 ft]

### Product Compliance

[For compliance documentation, visit the product page on TE.com>](#)

EU RoHS Directive 2011/65/EU	Compliant with Exemptions
EU ELV Directive 2000/53/EC	Not Yet Reviewed
China RoHS 2 Directive MIIT Order No 32, 2016	Restricted Materials Above Threshold
EU REACH Regulation (EC) No. 1907/2006	Current ECHA Candidate List: JUNE 2024 (241)

Candidate List Declared Against: JUNE 2023 (235)

SVHC > Threshold:

Pb (3.7% in Component Part)

MCCP (1.8% in Component Part)

TBPH (15% in Component Part)

**Article Safe Usage Statements:**

Do not eat, drink or smoke when using this product. Wash thoroughly after handling. Do not handle until all safety precautions have been read and understood. Recycle if possible and dispose of the article by following all applicable governmental regulations relevant to your geographic location.

Halogen Content

Not Low Halogen - contains Br or Cl > 900 ppm.

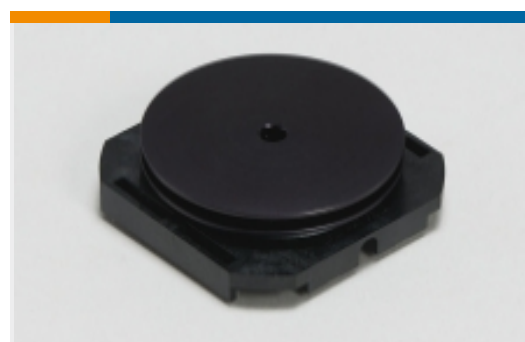
Solder Process Capability

Not applicable for solder process capability

**Product Compliance Disclaimer**

This information is provided based on reasonable inquiry of our suppliers and represents our current actual knowledge based on the information they provided. This information is subject to change. The part numbers that TE has identified as EU RoHS compliant have a maximum concentration of 0.1% by weight in homogenous materials for lead, hexavalent chromium, mercury, PBB, PBDE, DBP, BBP, DEHP, DIBP, and 0.01% for cadmium, or qualify for an exemption to these limits as defined in the Annexes of Directive 2011/65/EU (RoHS2). Finished electrical and electronic equipment products will be CE marked as required by Directive 2011/65/EU. Components may not be CE marked. Additionally, the part numbers that TE has identified as EU ELV compliant have a maximum concentration of 0.1% by weight in homogenous materials for lead, hexavalent chromium, and mercury, and 0.01% for cadmium, or qualify for an exemption to these limits as defined in the Annexes of Directive 2000/53/EC (ELV). Regarding the REACH Regulation, the information TE provides on SVHC in articles for this part number is based on the latest European Chemicals Agency (ECHA) 'Guidance on requirements for substances in articles' posted at this URL: <https://echa.europa.eu/guidance-documents/guidance-on-reach>

**Also in the Series | QSFP/QSFP+**



Heat Sinks(1)



Light Pipes(8)



Pluggable I/O Cable Assemblies(13)



Pluggable IO Connectors & Cages(154)

**Customers Also Bought**



TE Part #640911-1  
RECEPT,PIDG FASTON 22-18 205



TE Part #826949-5  
5P MOD2 STIFT LEI



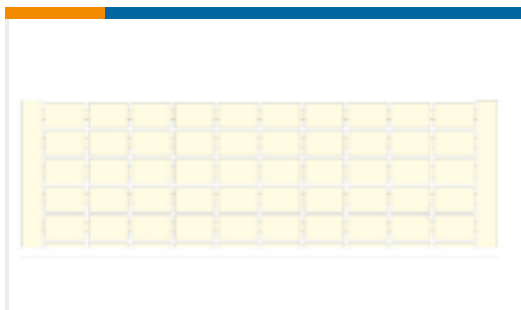
TE Part #1-1825910-4  
FSM8JH=6MM TACT SWITCH, HIGH TEMP



TE Part #34105  
SOLIS R 22-16 COMM 22-18 MIL 6



TE Part #108961-000  
D-406-0003



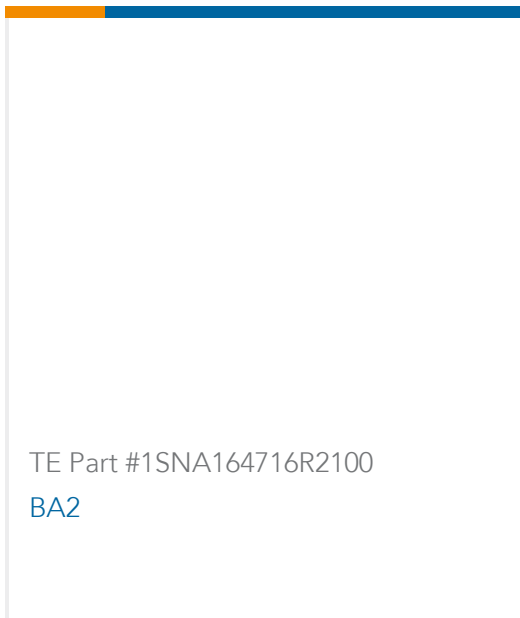
TE Part #1SNA230030R0700  
RC55 1->100 HORIZONTAL



TE Part #1SNA110491R1700  
DR4/6.1



TE Part #6485470001  
CM-SCE-1/4-4H-9



TE Part #1SNA164716R2100  
BA2

## Documents

### Product Drawings

C/A, QSFP, 3M, P1-P2, UNEQUALIZED

English

### CAD Files

3D PDF

3D

Customer View Model

[ENG\\_CVM\\_CVM\\_2053638-3\\_Y.2d\\_dxf.zip](#)

English

Customer View Model

[ENG\\_CVM\\_CVM\\_2053638-3\\_Y.3d\\_igs.zip](#)

English

Customer View Model

[ENG\\_CVM\\_CVM\\_2053638-3\\_Y.3d\\_stp.zip](#)

English

By downloading the CAD file I accept and agree to the [Terms and Conditions](#) of use.

### Datasheets & Catalog Pages

[1773408-1 Pluggable Input/Output Solutions catalog - QSFP section](#)

English

[9-1773458-9\\_QSFP/QSFP+\\_HIGH\\_SPEED\\_COPPER\\_CABLE\\_ASSEMBLIES](#)

English