



"Forerunner"-Tracked Chassis

SKU:ROB0154

INTRODUCTION

This is Forerunner, an agile tracked chassis, low noise and easy to control, which could be a good partner for your tank-like robots. High-strength aluminium alloy tank base, with delicate appearance, higher stability and longer durability.

The track robot is made of engineering plastic that basically assured the good elasticity, excellent damping effect and large road grip of the product. What's more, it comes with two quality motors to provide high power and speed, which enables your DIY robot car to widely suit all kinds of road surfaces.

To find more interesting functions, you can use this tracked chassis with [Arduino](#) microcontrollers or add other electronic components on the base such as, [IR sensor](#), [ultrasonic sensor](#), camera, LED, display, WIFI module, etc. For Arduino fans and smart robot car lovers, this can be a good choice for you!

Note: the tracked chassis is unassembled, you need to get it done by yourself.

Install Instruction:



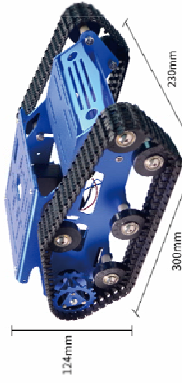
Instruction



Color



Size



Parameters

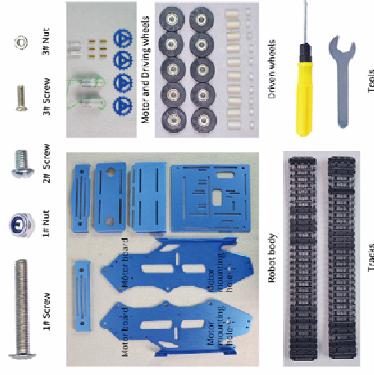
Product Name	Tank Chassis	Material	Aluminum Alloy+ABS
Color	Blue/Green/Red/Gold/Black/Orange	Craft Process	Electroplate
Input voltage	1.2V	Motor Speed	160r/min
Degree of climbing	30°	Working Type	Crawler-type
Size	300x230x124mm(LxWxH)	Weight	1.20kg

A variety of circuit mounting holes



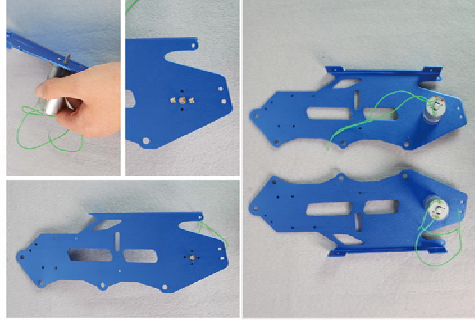
List of parts and tools

Accessories list and tools



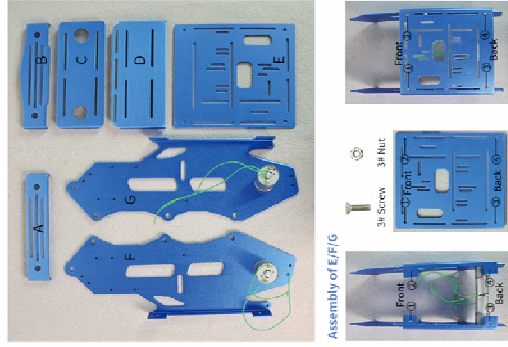
Tips
The 3# screw/nut is commonly used for installation.
The 1# screw/nut is used for the driven wheels.
The 2# screw is used for the driving wheel.

Installation of Motor



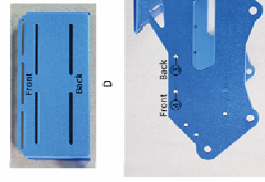
First insert the motor into the motor mounting hole of the motor board, then insert the motor board into the robot position, and the other motor will cooperate in the same way.
Note: Pay attention to the direction of the motor insertion during installation.

Robot body assembly



Please pay attention to the direction of part E

Installation of Part D



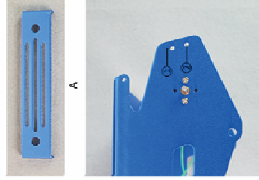
Use 3# screw and nut to fix part D



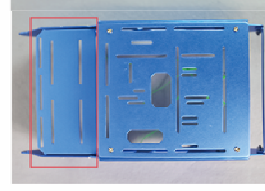
- ①② corresponds to part A
- ③④ corresponds to part D
- ⑤⑥ corresponds to part B
- ⑦⑧ corresponds to part C

Please pay attention to the direction of part B and D

Installation of Part A



Use 3# screw and nut to fix part A



finished product

finished product



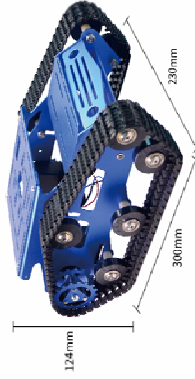
Instruction



Color



Size

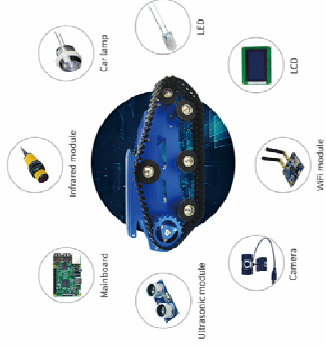


Home: www.xiporpeek.com
Email: service@wif-robots.com

Parameters

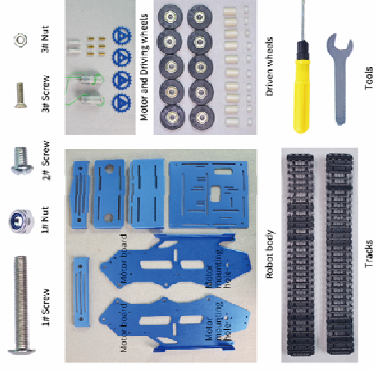
Product Name	Tank Chassis	Material	Aluminum Alloy/ABS
Color	Blue/Green/Red/Color/Black/Orange	Craft Process	Electroplate
Input voltage	1.2V	Motor Speed	162r/min
Degree of climbing	30°	Working Type	Crawler-type
Size	300x230x124mm(LxWxH)	Weight	1.20KG

A variety of circuit mounting holes



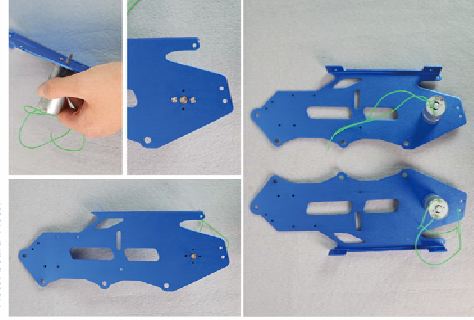
List of parts and tools

Accessories list and tools



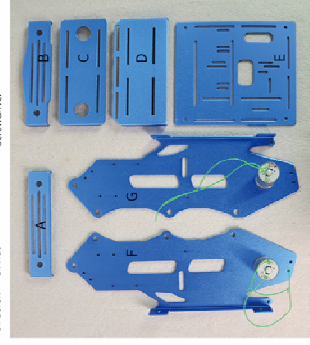
Tips
The 3# screw/nut is commonly used for installation.
The 1# screw/nut is used for the driven wheels.
The 2# screw is used for the driving wheel.

Installation of Motor

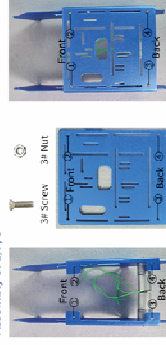


First insert the motor into the motor mounting hole of the motor board, then rotate the motor to align the cross hole, and place two 3# screws into the hole position, and the other motor will operate in the same way.
Note: Pay attention to the direction of the motor in order during installation.

Robot body assembly



Assembly of E/F/G

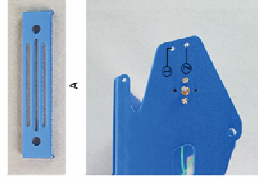


Please pay attention to the direction of part E



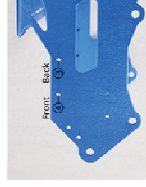
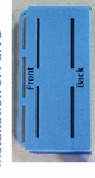
①② corresponds to part A
③④ corresponds to part D
⑤⑥ corresponds to part B
⑦⑧ corresponds to part C
Please pay attention to the direction of part B and D

Installation of Part A

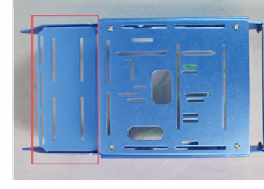


Use 3# screw and nut to fix part A

Installation of Part D



Use 3# screw and nut to fix part D



finished product

finished product

SPECIFICATION

- Product Size: 300 *230 *124 mm(L*W*H) /11.81*9.06*4.89"
- Net Weight: 1.2kg
- Base Material: aluminium alloy
- Processing Method: electroplating
- Track: engineering plastic
- Wheel: engineering plastic
- Package includes:
- Base: 1 set
- Motor: 2
- Track: 2
- Drive Wheel: 2
- Driven Wheel: 10
- Screw Accessory: 1 set
- Wrench: 1
- Screwdriver: 1
- Motor parameter:
- Input Voltage: 12V
- Rotation Speed: 160RPM

SHIPPING LIST

- "Forerunner" - Tracked Chassis x1