

INCH-POUND

MS27291G
20 August 2009
SUPERSEDING
MS27291F
6 February 2004

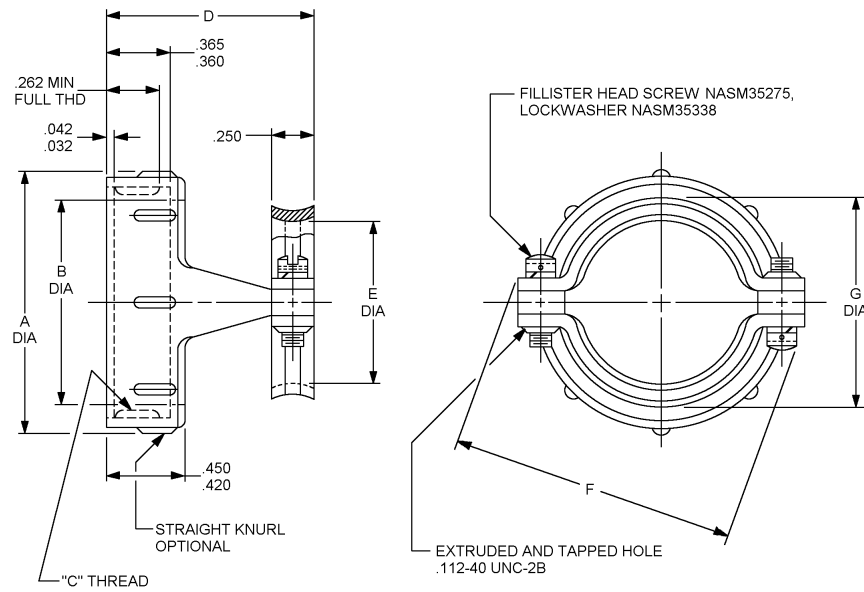
DETAIL SPECIFICATION SHEET

SUPPORT, CABLE, ELECTRICAL CONNECTOR

Inactive for new design after 14 November 1977. For new design, use MIL-DTL-83723, series III, which is interchangeable.

This specification is approved for use by all Departments and Agencies of the Department of Defense.

The requirements for acquiring the product described herein shall consist of this specification sheet and MIL-DTL-26500.



Inches	mm
.032	.812
.042	1.067
.250	6.35
.262	6.65
.360	9.14
.365	9.27
.420	10.67
.450	11.43

FIGURE 1. Dimensions and configurations.

MS27291G

MS PIN	For use with connector class	Shell size	A max dia	B dia ± .005
MS27291-1	R, F	10	.731	.459
MS27291-101	G	10	.731	.459
MS27291-2	R, F	12	.919	.636
MS27291-201	G	12	.919	.636
MS27291-3	R, F	14	.981	.698
MS27291-301	G	14	.981	.698
MS27291-4	R, F	16	1.106	.823
MS27291-401	G	16	1.106	.823
MS27291-5	R, F	18	1.231	.941
MS27291-501	G	18	1.231	.941
MS27291-6	R, F	22	1.481	1.191
MS27291-601	G	22	1.481	1.191
MS27291-13	R, F	8	.606	.334
MS27291-701	G	8	.606	.334
MS27291-14	R, F	20	1.356	1.066
MS27291-801	G	20	1.356	1.066
MS27291-15	R, F	24	1.606	1.316
MS27291-901	G	24	1.606	1.316

FIGURE 1. Dimensions and configurations – Continued.

MS27291G

MS PIN	For use with connector class	Shell size	"C" Nom UNEF-2B thread	D ± .015	E dia ± .015	F max	G dia max.
MS27291-1	R, F	10	.5625-24	.935	.270	.914	.435
MS27291-101	G	10	.5625-24	.935	.270	.914	.435
MS27291-2	R, F	12	.750	.935	.400	1.026	.565
MS27291-201	G	12	.750	.935	.400	1.026	.565
MS27291-3	R, F	14	.8125	1.170	.460	1.090	.625
MS27291-301	G	14	.8125	1.170	.460	1.090	.625
MS27291-4	R, F	16	.9375	1.170	.610	1.250	.775
MS27291-401	G	16	.9375	1.170	.610	1.250	.775
MS27291-5	R, F	18	1.0625	1.170	.690	1.358	.855
MS27291-501	G	18	1.0625	1.170	.690	1.358	.855
MS27291-6	R, F	22	1.3125	1.170	.940	1.604	1.105
MS27291-601	G	22	1.3125	1.170	.940	1.604	1.105
MS27291-13	R, F	8	.4375	.935	.186	.789	.351
MS27291-701	G	8	.4375	.935	.186	.789	.351
MS27291-14	R, F	20	1.1875	1.170	.816	1.481	.981
MS27291-801	G	20	1.1875	1.170	.816	1.481	.981
MS27291-15	R, F	24	1.4375	1.170	1.066	1.729	1.231
MS27291-901	G	24	1.4375	1.170	1.066	1.729	1.231

FIGURE 1. Dimensions and configurations – Continued.

MS27291G

MS PIN	For use with connector class	Shell size	A max dia.	B dia ± .005	“C” -36NS2A thread
MS27291-702	E	08	.606	.334	.4340
MS27291-102	E	10	.731	.459	.5634
MS27291-202	E	12	.919	.631	.7334
MS27291-302	E	14	.981	.698	.8032
MS27291-402	E	16	1.106	.823	.9302
MS27291-502	E	18	1.231	.941	1.0362
MS27291-802	E	20	1.356	1.066	1.1611
MS27291-602	E	22	1.481	1.191	1.2862
MS27292-902	E	24	1.606	1.316	1.1111

MS PIN	For use with class connector	Shell size	D ± .015	E dia. ± .015	F max	G dia max
MS27291-702	E	08	.935	.186	.769	.351
MS27291-102	E	10	.935	.270	.914	.435
MS27291-202	E	12	.935	.400	1.026	.565
MS27291-302	E	14	1.170	.460	1.090	.625
MS27291-402	E	16	1.170	.610	1.250	.775
MS27291-502	E	18	1.170	.690	1.358	.855
MS27291-802	E	20	1.170	.816	1.481	.981
MS27291-602	E	22	1.170	.940	1.604	1.105
MS27292-902	E	24	1.170	1.066	1.729	1.231

FIGURE 1. Dimensions and configurations – Continued.

MS27291G

Inches	mm	Inches	mm	Inches	mm
.032	.081	.61	15.49	1.026	26.06
.042	1.07	.625	15.87	1.0362	26.32
.186	4.72	.636	16.15	1.0625	26.99
.25	6.35	.69	17.53	1.066	27.07
.262	6.65	.698	17.73	1.09	27.69
.27	6.85	.731	18.57	1.105	28.06
.334	8.48	.7334	18.63	1.106	28.09
.351	8.91	.75	19.05	1.1111	28.22
.36	9.14	.775	19.68	1.1611	29.49
.365	9.27	.789	20.04	1.17	29.72
.4	10.16	.8032	20.4	1.875	30.16
.42	10.67	.8125	20.64	1.191	30.25
.434	11.02	.823	20.9	1.231	31.27
.435	11.05	.855	19.68	1.25	31.75
.4375	11.11	.914	23.21	1.2862	32.67
.45	11.43	.919	23.34	1.3125	33.33
.459	11.66	.9302	23.63	1.356	34.44
.46	11.68	.935	23.75	1.358	34.49
.5634	14.31	.94	23.87	1.481	37.62
.565	14.35	.941	23.9	1.604	40.74
.606	15.39	.981	24.92	1.606	40.79
				1.729	43.29

NOTES:

1. Dimensions are in inches. Metric equivalent are given for information only.
2. Unless otherwise specified, tolerances are .005 for three place decimals and .02 for two place decimals.
3. All threads are in accordance with FED-STD-H28.
4. Remove all burrs and sharp edges.

FIGURE 1. Dimensions and configurations – Continued.

REQUIREMENTS

Dimensions and configurations: See figure 1.

Materials:

Cable strap; aluminum alloy in accordance with SAE-AMS-QQ-A-367 or ASTM-B209 or stainless steel type, 300 or 216 series. Cable strap for use with class R and F connectors. For aluminum alloy, anodize in accordance with MIL-A-8625 or suitable hard anodizing process to meet the performance requirements of MIL-DTL-26500 and MIL-DTL-83723. For stainless steel the finish shall be black oxide or equivalent. Cable strap for use with class G connectors; for stainless steel, chromium plating in accordance with SAE-AMS-QQ-C-320, class 2a, type II, .0002 minimum thickness.

Cable support; aluminum alloy in accordance with ASTM-B85/B85M composition 13, A13, A380, or 380. Cable support use with class R and F connectors; for aluminum alloy, in accordance with MIL-A-8625 or suitable hard anodizing process to meet the performance requirements of MIL-DTL-26500 and MIL-DTL-83723. Cable support for use with class G connectors; for aluminum alloy, chromium plating in accordance with SAE-AMS-QQ-C-320, class 2a, type II, .0002 minimum thickness.

Part or Identifying Number (PIN): MS27291-1.

Changes from previous issue. Marginal notations are not used in this revision to identify changes with respect to the previous issue due to the extent of the changes.

Referenced documents. In addition to MIL-DTL-26500, this document references the following:

MIL-A-8625
MIL-DTL-83723
FED-STD-H28
SAE-AMS-QQ-C-320
SAE-AMS-QQ-A-367
NASM35275
NASM35338
ASTM-B85/B85M
ASTM-B209

MS27291G

CONCLUDING MATERIAL

Custodians:
Air Force - 85
DLA - CC

Preparing activity:
DLA - CC

(Project 5935-2009-122)

Review activities:
Air Force - 19, 99

NOTE: The activities listed above were interested in this document as of the date of this document. Since organizations and responsibilities can change, you should verify the currency of the information above using the ASSIST Online database at <http://assist.daps.dla.mil>.