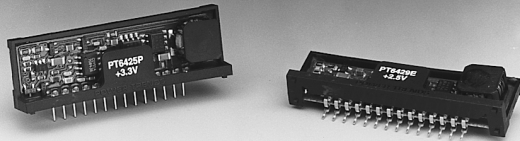


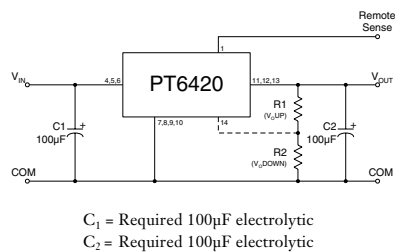
- Adjustable Output Voltage
- 85% Efficiency
- Small SIP Footprint
- Input Voltage Range: 4.5V to 5.5V
- Remote Sense Capability

The PT6420 series from Power Trends is a high performance +5V to +3.3V, 3Amp family of 14-Pin SIP (Single In-line Package) Integrated Switching Regulators (ISRs). Only two external capacitors are required for proper operation.

Please note that this product does not include short circuit protection.



Standard Application



Pin-Out Information

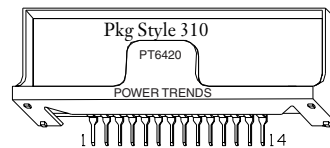
Pin	Function
1	Remote Sense
2	Do not connect
3	Do not connect
4	V _{in}
5	V _{in}
6	V _{in}
7	GND
8	GND
9	GND
10	GND
11	V _{out}
12	V _{out}
13	V _{out}
14	V _{out} Adjust

Ordering Information

PT6424□	= +1.5 Volts
PT6425□	= +3.3 Volts
PT6426□	= +1.8 Volts
PT6427□	= +2.1 Volts
PT6428□	= +1.2 Volts
PT6429□	= +2.5 Volts

PT Series Suffix (PT1234X)

Case/Pin Configuration	
Vertical Through-Hole	P
Horizontal Through-Hole	D
Horizontal Surface Mount	E



Note: Back surface of product is conducting metal.

Specifications

Characteristics (T _a = 25°C unless noted)	Symbols	Conditions	PT6420 SERIES			Units
			Min	Typ	Max	
Output Current	I _o	4.5V ≤ V _{in} ≤ 5.5V	0	—	3.0	A
Current Limit	I _{cl}	V _{in} = +5V	—	3.6	5.0	A
Input Voltage Range	V _{in}	0.1A ≤ I _o ≤ 3.0A	4.5	—	5.5	V
Output Voltage Tolerance	ΔV _o	V _{in} = +5V, I _o = 3.0A 0°C ≤ T _a ≤ +70°C	V _o -0.05	3.3	V _o +0.05	V
Line Regulation	Reg _{line}	4.5V ≤ V _{in} ≤ 5.5V, I _o = 3.0A	—	±10	±25	mV
Load Regulation	Reg _{load}	V _{in} = +5V, 0.3 ≤ I _o ≤ 3.0A	—	±10*	±25*	mV
V _o Ripple/Noise	V _n	V _{in} = 5V, I _o = 3.0A	—	66	165	mVpp
Transient Response with C ₂ = 100µF	t _{tr} V _{os}	I _o step between 1.5A and 3.0A V _o over/undershoot	— —	200 200	— —	µSec mV
Efficiency	η	V _{in} = +5V, I _o = 1.5A V _o = 3.3V V _o = 1.8V V _o = 2.1V V _o = 1.2V	— — — —	85 74 77 63	— — — —	% % % %
Switching Frequency	f _o	4.5V ≤ V _{in} ≤ 5.5V 0.3A ≤ I _o ≤ 3.0A	500	650	800	kHz
Absolute Maximum Operating Temperature Range	T _a		0	—	+85	°C
Recommended Operating Temperature Range	T _a	Free Air Convection (40-60 LFM) At Vin= 5V, Io=2.5A	0	—	+70**	°C
Thermal Resistance	θ _{ja}	Free Air Convection (40-60 LFM)	—	25	—	°C/W
Storage Temperature	T _s		-40	—	+125	°C
Mechanical Shock		Per Mil-STD-883D, Method 2002.3, 1 msec, Half Sine, mounted to a fixture	—	500	—	G's
Mechanical Vibration		Per Mil-STD-883D, Method 2007.2, 20-2000 Hz, Soldered in a PC board	—	15	—	G's
Weight	—	—	—	6.5	—	grams

*When used with remote sense function.

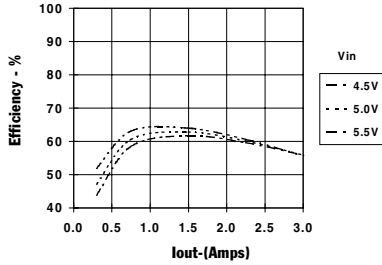
**See Thermal Derating chart.

Note: The PT6420 Series requires two 100µF electrolytic or tantalum capacitors for proper operation in all applications.

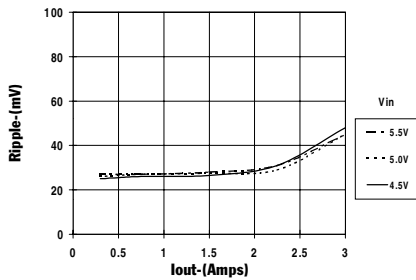
3 Amp 5V Input Adjustable Integrated Switching Regulator

PT6428 1.2 VDC (See Note 1)

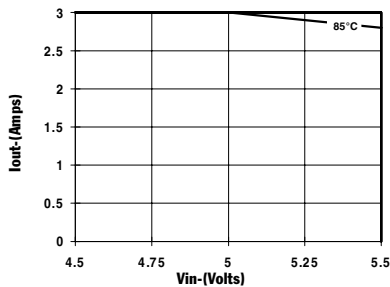
Efficiency vs Output Current



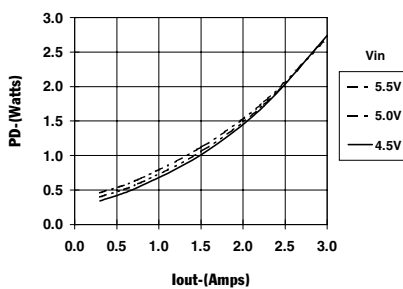
Ripple vs Output Current



Thermal Derating (Ta) (See Note 2)

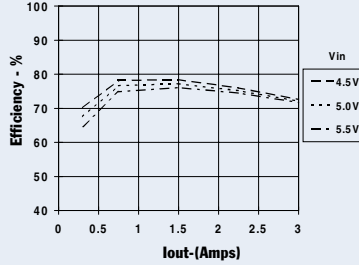


Power Dissipation vs Output Current

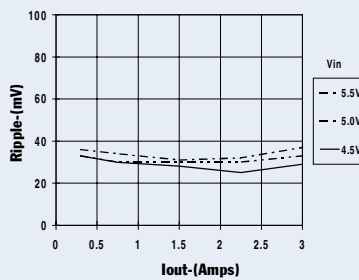


PT6427, 2.1 VDC (See Note 1)

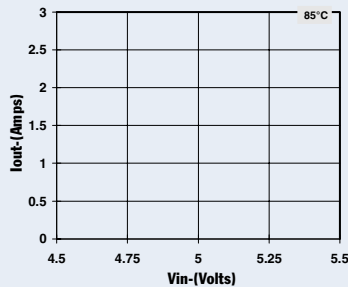
Efficiency vs Output Current



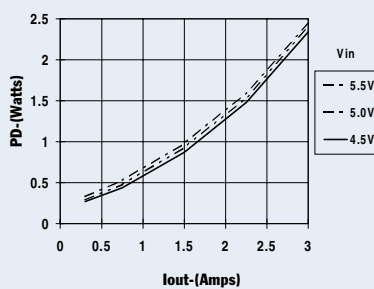
Ripple vs Output Current



Thermal Derating (Ta) (See Note 2)

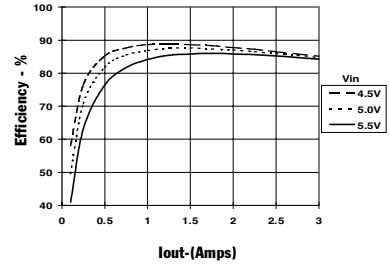


Power Dissipation vs Output Current

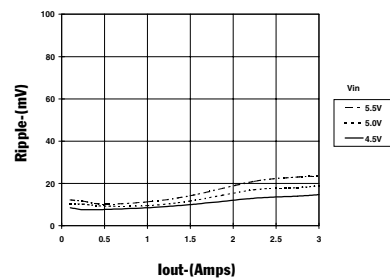


PT6425, 3.3 VDC (See Note 1)

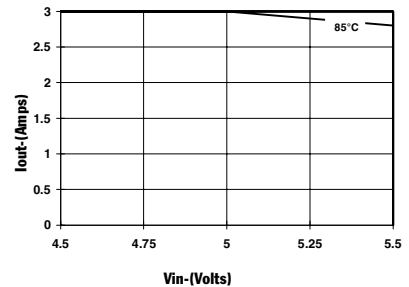
Efficiency vs Output Current



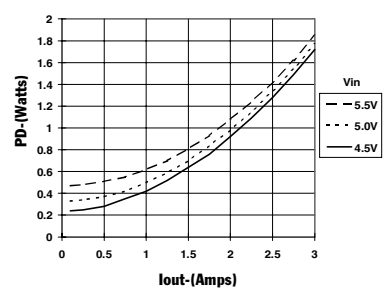
Ripple vs Output Current



Thermal Derating (Ta) (See Note 2)



Power Dissipation vs Output Current



Note 1: All data listed in the above graphs except for derating data has been developed from actual products tested at 25°C. This data is considered typical data for the ISR.
Note 2: Thermal derating graphs are developed in free air convection cooling of 40-60 LFM. (See Thermal Application Notes.)

Adjusting the Output Voltage of the PT6420 Series 3AMP 5V Bus Converters

The output voltage of the Power Trends PT6420 Series ISRs may be adjusted higher or lower than the factory trimmed pre-set voltage with the addition of a single external resistor. Table 1 accordingly gives the allowable adjustment range for each model in the series as V_a (min) and V_a (max).

Adjust Up: (See note 1) An increase in the output voltage is obtained by adding a resistor R1, between pin 14 (V_o adjust) and pins 11-13 (V_o).

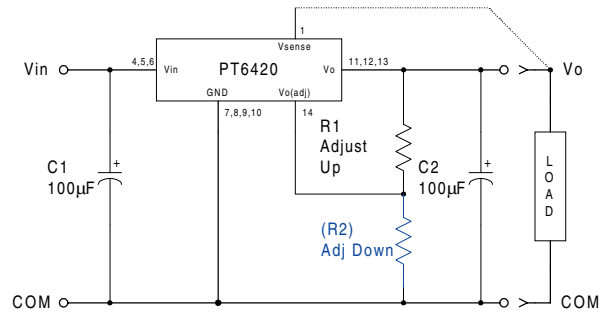
Adjust Down: (See note 1) Add a resistor (R2), between pin 14 (V_o adjust) and pins 7-10 (GND).

Refer to Figure 1 and Table 2 for both the placement and value of the required resistor; either R1 or (R2) as appropriate.

Notes:

- The direction in which each resistor adjusts the output of the PT6420 series differs from many other Power Trends products. These output voltage adjustment notes are therefore specific only to the PT6420 models.
- Use only a single 1% resistor in either the R1 or (R2) location. Place the resistor as close to the ISR as possible.
- Never connect capacitors from V_o adjust to either GND, V_{out} , or the Remote Sense pin. Any capacitance added to the V_o adjust pin will affect the stability of the ISR.
- The PT6420 incorporates a Remote Sense (See Figure 1). If this feature is being used, connecting the resistor R1 between pin 14 (V_o adjust) and pin 1 (Remote Sense) can benefit load regulation.
- An increase in the output voltage may place additional limits on the input voltage range of the part. The revised minimum input voltage will be ($V_{out} + 1.2$) or 4.5V, whichever is higher. Do not exceed 5.5Vdc.

Figure 1



The values of R1 [adjust up], and (R2) [adjust down], can also be calculated using the following formulae.

$$R1 = \frac{12.45 V_o}{(V_a - V_o)} - 49.9 \quad \text{k}\Omega$$

$$(R2) = \frac{12.45 (2V_a - V_o)}{V_o - V_a} - 49.9 \quad \text{k}\Omega$$

Where: V_o = Original output voltage
 V_a = Adjusted output voltage

Table 1

PT6420 ADJUSTMENT RANGE

Series Pt #	PT6428	PT6424	PT6426	PT6427	PT6429	PT6425
V_o (nom)	1.2	1.5	1.8	2.1	2.5	3.3
V_a (min)	1.1	1.3	1.5	1.8	2.1	2.8
V_a (max)	1.4	1.8	2.2	2.6	3.1	3.8

PT6420 Series
Table 2
PT6420 ADJUSTMENT RESISTOR VALUES

Series Pt #	PT6428	PT6424	PT6426	PT6427	PT6429	PT6425
V ₀ (nom)	1.2	1.5	1.8	2.1	2.5	3.3
V _a (req'd)						
1.1	(74.6)kΩ					
1.15	(224.0)kΩ					
1.2						
1.25	249.0kΩ					
1.3	99.5kΩ	(18.6)kΩ				
1.35	49.7kΩ	(49.7)kΩ				
1.4	24.8kΩ	(112.0)kΩ				
1.45		(299.0)kΩ				
1.5			(0.0)kΩ			
1.55		324.0kΩ	(14.8)kΩ			
1.6		137.0kΩ	(37.3)kΩ			
1.65		74.6kΩ	(74.6)kΩ			
1.7		43.5kΩ	(149.0)kΩ			
1.75		24.8kΩ	(373.0)kΩ			
1.8		12.4kΩ		(12.4)kΩ		
1.85			398.0kΩ	(29.8)kΩ		
1.9			174.0kΩ	(55.9)kΩ		
1.95			99.5kΩ	(99.5)kΩ		
2.0			62.2kΩ	(187.0)kΩ		
2.05			39.7kΩ	(448.0)kΩ		
2.1			24.8kΩ		(3.0)kΩ	
2.15			14.1kΩ	473.0kΩ	(14.1)kΩ	
2.2			6.1kΩ	212.0kΩ	(29.0)kΩ	
2.25				124.0kΩ	(49.7)kΩ	
2.3				80.8kΩ	(80.8)kΩ	
2.35				54.7kΩ	(133.0)kΩ	
2.4				37.3kΩ	(236.0)kΩ	
2.45				24.8kΩ	(548.0)kΩ	
2.5				15.5kΩ		
2.55				8.2kΩ	573.0kΩ	
2.6				2.4kΩ	261.0kΩ	
2.65					158.0kΩ	
2.7					106.0kΩ	
2.75					74.6kΩ	
2.8					53.9kΩ	(7.4)kΩ
2.85					39.0kΩ	(16.5)kΩ
2.9					27.9kΩ	(27.9)kΩ
2.95					19.3kΩ	(42.6)kΩ
3.0					12.4kΩ	(62.2)kΩ
3.1					2.0kΩ	(131.0)kΩ
3.2						(336.0)kΩ
3.3						
3.4						361.0kΩ
3.5						156.0kΩ
3.6						87.0kΩ
3.7						52.8kΩ
3.8						32.3kΩ

R1 = Black R2 = (Blue)

PACKAGING INFORMATION

Orderable Device	Status ⁽¹⁾	Package Type	Package Drawing	Pins	Package Qty	Eco Plan ⁽²⁾	Lead/ Ball Finish	MSL Peak Temp ⁽³⁾	Samples (Requires Login)
PT6424E	NRND	SIP MODULE	EDC	14	12	Pb-Free (RoHS)	Call TI	Level-1-215C-UNLIM	
PT6425D	NRND	SIP MODULE	EDA	14	12	Pb-Free (RoHS)	Call TI	N / A for Pkg Type	
PT6425E	NRND	SIP MODULE	EDC	14	12	Pb-Free (RoHS)	Call TI	Level-1-215C-UNLIM	
PT6425P	NRND	SIP MODULE	EDD	14		TBD	Call TI	Call TI	
PT6429P	NRND	SIP MODULE	EDD	14	12	Pb-Free (RoHS)	Call TI	N / A for Pkg Type	

⁽¹⁾ The marketing status values are defined as follows:

ACTIVE: Product device recommended for new designs.

LIFEBUY: TI has announced that the device will be discontinued, and a lifetime-buy period is in effect.

NRND: Not recommended for new designs. Device is in production to support existing customers, but TI does not recommend using this part in a new design.

PREVIEW: Device has been announced but is not in production. Samples may or may not be available.

OBSOLETE: TI has discontinued the production of the device.

⁽²⁾ Eco Plan - The planned eco-friendly classification: Pb-Free (RoHS), Pb-Free (RoHS Exempt), or Green (RoHS & no Sb/Br) - please check <http://www.ti.com/productcontent> for the latest availability information and additional product content details.

TBD: The Pb-Free/Green conversion plan has not been defined.

Pb-Free (RoHS): TI's terms "Lead-Free" or "Pb-Free" mean semiconductor products that are compatible with the current RoHS requirements for all 6 substances, including the requirement that lead not exceed 0.1% by weight in homogeneous materials. Where designed to be soldered at high temperatures, TI Pb-Free products are suitable for use in specified lead-free processes.

Pb-Free (RoHS Exempt): This component has a RoHS exemption for either 1) lead-based flip-chip solder bumps used between the die and package, or 2) lead-based die adhesive used between the die and leadframe. The component is otherwise considered Pb-Free (RoHS compatible) as defined above.

Green (RoHS & no Sb/Br): TI defines "Green" to mean Pb-Free (RoHS compatible), and free of Bromine (Br) and Antimony (Sb) based flame retardants (Br or Sb do not exceed 0.1% by weight in homogeneous material)

⁽³⁾ MSL, Peak Temp. -- The Moisture Sensitivity Level rating according to the JEDEC industry standard classifications, and peak solder temperature.

Important Information and Disclaimer: The information provided on this page represents TI's knowledge and belief as of the date that it is provided. TI bases its knowledge and belief on information provided by third parties, and makes no representation or warranty as to the accuracy of such information. Efforts are underway to better integrate information from third parties. TI has taken and continues to take reasonable steps to provide representative and accurate information but may not have conducted destructive testing or chemical analysis on incoming materials and chemicals. TI and TI suppliers consider certain information to be proprietary, and thus CAS numbers and other limited information may not be available for release.

In no event shall TI's liability arising out of such information exceed the total purchase price of the TI part(s) at issue in this document sold by TI to Customer on an annual basis.

IMPORTANT NOTICE

Texas Instruments Incorporated and its subsidiaries (TI) reserve the right to make corrections, modifications, enhancements, improvements, and other changes to its products and services at any time and to discontinue any product or service without notice. Customers should obtain the latest relevant information before placing orders and should verify that such information is current and complete. All products are sold subject to TI's terms and conditions of sale supplied at the time of order acknowledgment.

TI warrants performance of its hardware products to the specifications applicable at the time of sale in accordance with TI's standard warranty. Testing and other quality control techniques are used to the extent TI deems necessary to support this warranty. Except where mandated by government requirements, testing of all parameters of each product is not necessarily performed.

TI assumes no liability for applications assistance or customer product design. Customers are responsible for their products and applications using TI components. To minimize the risks associated with customer products and applications, customers should provide adequate design and operating safeguards.

TI does not warrant or represent that any license, either express or implied, is granted under any TI patent right, copyright, mask work right, or other TI intellectual property right relating to any combination, machine, or process in which TI products or services are used. Information published by TI regarding third-party products or services does not constitute a license from TI to use such products or services or a warranty or endorsement thereof. Use of such information may require a license from a third party under the patents or other intellectual property of the third party, or a license from TI under the patents or other intellectual property of TI.

Reproduction of TI information in TI data books or data sheets is permissible only if reproduction is without alteration and is accompanied by all associated warranties, conditions, limitations, and notices. Reproduction of this information with alteration is an unfair and deceptive business practice. TI is not responsible or liable for such altered documentation. Information of third parties may be subject to additional restrictions.

Resale of TI products or services with statements different from or beyond the parameters stated by TI for that product or service voids all express and any implied warranties for the associated TI product or service and is an unfair and deceptive business practice. TI is not responsible or liable for any such statements.

TI products are not authorized for use in safety-critical applications (such as life support) where a failure of the TI product would reasonably be expected to cause severe personal injury or death, unless officers of the parties have executed an agreement specifically governing such use. Buyers represent that they have all necessary expertise in the safety and regulatory ramifications of their applications, and acknowledge and agree that they are solely responsible for all legal, regulatory and safety-related requirements concerning their products and any use of TI products in such safety-critical applications, notwithstanding any applications-related information or support that may be provided by TI. Further, Buyers must fully indemnify TI and its representatives against any damages arising out of the use of TI products in such safety-critical applications.

TI products are neither designed nor intended for use in military/aerospace applications or environments unless the TI products are specifically designated by TI as military-grade or "enhanced plastic." Only products designated by TI as military-grade meet military specifications. Buyers acknowledge and agree that any such use of TI products which TI has not designated as military-grade is solely at the Buyer's risk, and that they are solely responsible for compliance with all legal and regulatory requirements in connection with such use.

TI products are neither designed nor intended for use in automotive applications or environments unless the specific TI products are designated by TI as compliant with ISO/TS 16949 requirements. Buyers acknowledge and agree that, if they use any non-designated products in automotive applications, TI will not be responsible for any failure to meet such requirements.

Following are URLs where you can obtain information on other Texas Instruments products and application solutions:

Products

Audio	www.ti.com/audio
Amplifiers	amplifier.ti.com
Data Converters	dataconverter.ti.com
DLP® Products	www.dlp.com
DSP	dsp.ti.com
Clocks and Timers	www.ti.com/clocks
Interface	interface.ti.com
Logic	logic.ti.com
Power Mgmt	power.ti.com
Microcontrollers	microcontroller.ti.com
RFID	www.ti-rfid.com
RF/IF and ZigBee® Solutions	www.ti.com/lprf

Applications

Communications and Telecom	www.ti.com/communications
Computers and Peripherals	www.ti.com/computers
Consumer Electronics	www.ti.com/consumer-apps
Energy and Lighting	www.ti.com/energy
Industrial	www.ti.com/industrial
Medical	www.ti.com/medical
Security	www.ti.com/security
Space, Avionics and Defense	www.ti.com/space-avionics-defense
Transportation and Automotive	www.ti.com/automotive
Video and Imaging	www.ti.com/video
Wireless	www.ti.com/wireless-apps

TI E2E Community Home Page

e2e.ti.com

Mailing Address: Texas Instruments, Post Office Box 655303, Dallas, Texas 75265
Copyright © 2011, Texas Instruments Incorporated