



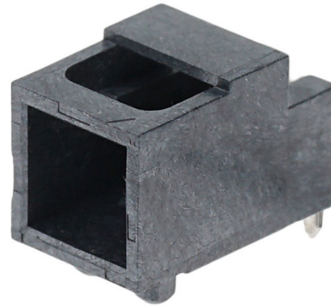
Part Number : [1510654306](#)

Product Description : 2.00mm Pitch, Milli-Grid PCB Header, Single Row, Right-Angle, Through Hole, 0.75µm Gold (Au) Plating, without Peg, 3.60mm PC Tail Length, 6 Circuits, Tube

Series Number : 151065

Status : Active

Product Category : PCB Headers and Receptacles



Documents & Resources

Drawings

[Drawing 1510654306_sd.pdf](#)

[Packaging Design Drawing PK-151062-0001-001.pdf](#)

3D Models and Design Files

[3D Model 1510654306_stp.zip](#)


Specifications

[Application Specification 503940001-AS-000.pdf](#)

[Product Specification PS-151062-0001-001.pdf](#)

Product Environment Compliance

Compliance

GADSL/IMDS	Not Relevant
China RoHS	
EU ELV	Compliant per 2000/53/EC
Low-Halogen Status	Low-Halogen per IEC 61249-2-21
REACH SVHC	Not Contained per D(2024)4144-DC (27 June 2024)
EU RoHS	Compliant per EU 2015/863

[Multiple Part Product Compliance Statements](#)

- Eu RoHS
- REACH SVHC
- Low-Halogen

[Multiple Part Industry Compliance Documents](#)

- IPC 1752A Class C
- IPC 1752A Class D
- Molex Product Compliance Declaration
- IEC-62474
- chemSHERPA (xml)

EU RoHS Certificate of Compliance

Part Details

General

Status	Active
Category	PCB Headers and Receptacles
Series	151065
Description	2.00mm Pitch, Milli-Grid PCB Header, Single Row, Right-Angle, Through Hole, 0.75µm Gold (Au) Plating, without Peg, 3.60mm PC Tail Length, 6 Circuits, Tube
Application	Signal, Wire-to-Board
Comments	See Product Specification for maximum current rating by wire AWG
Component Type	PCB Header
Product Family	Milli-Grid Connector System
Product Name	Milli-Grid
UPC	889056636322

Agency

CSA	LR19980
UL	E29179

Electrical

Current - Maximum per Contact	2.5A
Voltage - Maximum	125V AC

Physical

Breakaway	No
Circuits (Loaded)	6
Circuits (maximum)	6

Color - Resin	Black
Durability (mating cycles max)	25
First Mate / Last Break	No
Flammability	94V-0
Glow-Wire Capable	No
Guide to Mating Part	No
Keying to Mating Part	None
Lock to Mating Part	Yes
Material - Metal	Copper Alloy
Material - Plating Mating	Gold
Material - Plating Termination	Tin
Material - Resin	Liquid Crystal Polymer
Net Weight	668.092/mg
Number of Rows	1
Orientation	Right Angle
Packaging Type	Tube
PC Tail Length	3.60mm
PCB Locator	Yes
PCB Retention	None
PCB Thickness - Recommended	2.50mm
Pitch - Mating Interface	2.00mm
Pitch - Termination Interface	2.00mm
Plating min - Mating	0.750µm
Plating min - Termination	2.000µm
Polarized to Mating Part	Yes
Polarized to PCB	Yes
Shrouded	Yes
Stackable	No
Temperature Range - Operating	-40° to +70°C
Termination Interface Style	Through Hole

Solder Process Data

Max-Duration	10
Lead-Free Process Capability	WAVE
Max-Cycle	1

Max-Temp	260
----------	-----

Mates With / Use With

Mates with Part(s)

Description	Part Number
Milli-Grid Single Row Receptacle Housings	<u>151100</u>

This document was generated on Sep 18, 2024