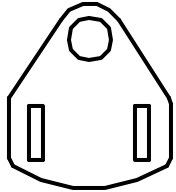


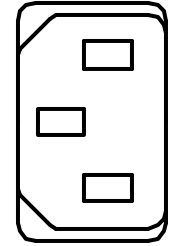
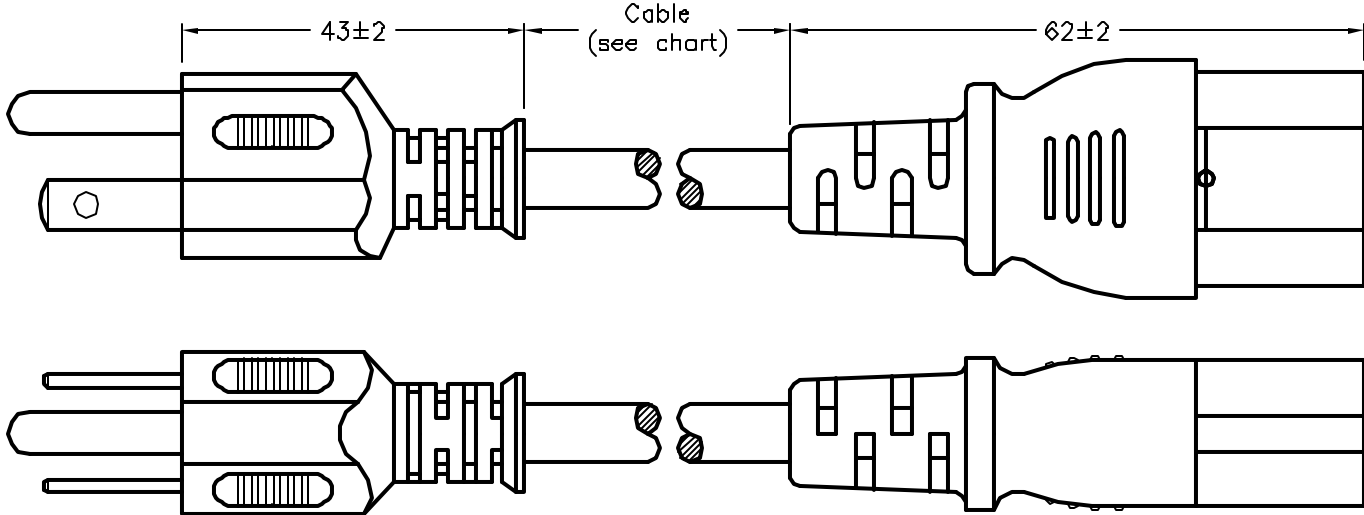
ALL RIGHTS RESERVED. NO PORTION OF THIS PUBLICATION, WHETHER IN WHOLE OR IN PART CAN BE REPRODUCED WITHOUT THE EXPRESS WRITTEN CONSENT OF SPC TECHNOLOGY.



DCP #		REV	DESCRIPTION	DRAWN	DATE	CHECKD	DATE	APPRVD	DATE
1931		A	RELEASED	HO	4/5/02	JN	07/08/08	DJC	4/11/02



Plug
NEMA 5-15P



Connector
IEC320-C13

SPC Type No.	Current (AMP) @ 125V	Cable		
		Type	Size (AWG)	Length±50
SPC13298	10	SJT	18	2000
SPC13296	10	SVT	18	2000
SPC13300	10	SJT	18	3000
SPC13297	10	SVT	18	3000
SPC13302	13	SJT	16	2000
SPC13304	13	SJT	16	3000
SPC13305	15	SJT	14	2000
SPC13307	15	SJT	14	3000

DISCLAIMER:
ALL STATEMENTS AND TECHNICAL INFORMATION CONTAINED HEREIN ARE BASED UPON INFORMATION AND/OR TESTS WE BELIEVE TO BE ACCURATE AND RELIABLE. SINCE CONDITIONS OF USE ARE BEYOND OUR CONTROL, THE USER SHALL DETERMINE THE SUITABILITY OF THE PRODUCT FOR THE INTENDED USE AND ASSUME ALL RISK AND LIABILITY WHATSOEVER IN CONNECTION THEREWITH.



UNLESS OTHERWISE SPECIFIED, DIMENSIONS ARE FOR REFERENCE PURPOSES ONLY.

DRAWN BY:	DATE:
HISHAM QDISH	4/5/02
CHECKED BY:	DATE:
Jason Nash	07/08/08
APPROVED BY:	DATE:
DANIEL CAREY	4/11/02

DRAWING TITLE: Power Cords, 3 Conductors, Shielded, RoHS Comp.			
SIZE	DWG. NO.	ELECTRONIC FILE	REV
A	TA-884	TA-884.DWG	A
SCALE: NTS	U.O.M.: Millimeters	SHEET: 1 OF 1	