

Product data sheet

Miniature connectors

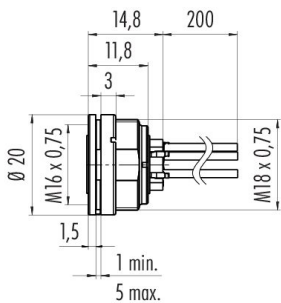


| | |
|---------------------|--|
| Product description | M16 Female panel mount connector, Contacts: 5 (05-a), unshielded, single wires, IP40 |
| Area | series 680 |
| Part no. | 09 0316 702 05 |

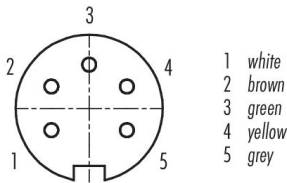
Illustration



Scale drawing



Contact arrangement (Plug-in side)



You can find the assembly instructions on the next page.

Technical data

General features

| | |
|---------------------------|------------------------------|
| Part no. | 09 0316 702 05 |
| Connector design | Female panel mount connector |
| Type standard | DIN EN 61076-2-106 |
| Version | Connector socket straight |
| Connector locking system | screw |
| Termination | single wires |
| Degree of protection | IP40 |
| Cross-sectional area | AWG 22 |
| Temperature range from/to | -30 °C / 85 °C |
| Mechanical operation | > 500 Mating cycles |
| Weight (g) | 15.10 |
| Customs tariff number | 85369010 |
| Country of Origin | DE |

Electrical parameters

| | |
|---------------------------|-----------------------|
| Rated voltage | 250 V |
| Rated impulse voltage | 1500 V |
| Rated current | 5.0 A |
| Insulation resistance | $\geq 10^{10} \Omega$ |
| Pollution degree | 1 |
| Overvoltage category | I |
| Insulating material group | II |
| EMC compliance | unshielded |

Product data sheet

Miniature connectors



| | |
|---------------------|--|
| Product description | M16 Female panel mount connector, Contacts: 5 (05-a), unshielded, single wires, IP40 |
| Area | series 680 |
| Part no. | 09 0316 702 05 |

Material

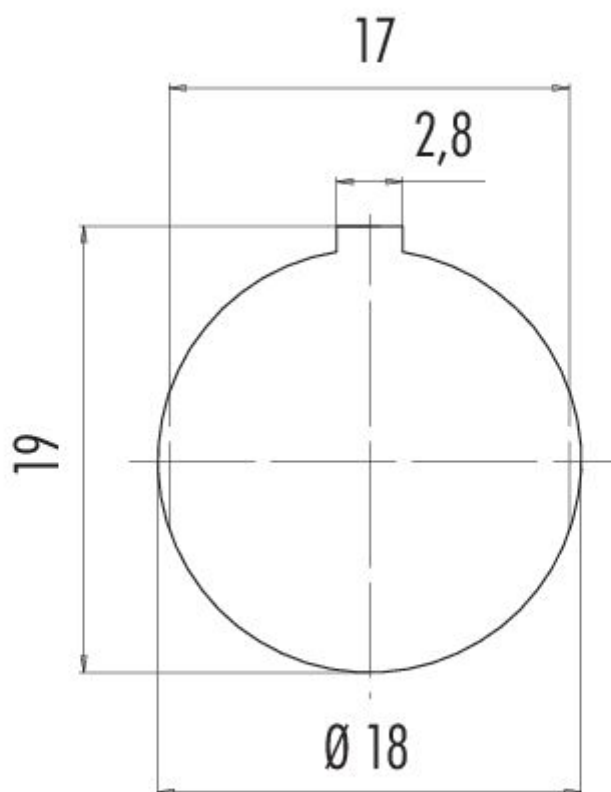
| | |
|-----------------------|--------------------------------------|
| Contact body material | PBT (UL94 V-0) |
| Contact material | CuSn (bronze) |
| Contact plating | Ag (silver) |
| REACH SVHC | CAS 7439-92-1 (Lead) |
| SCIP number | 89ef0793-6e9c-40da-af62-eab82e9f0769 |

Classifications

| | |
|-------------|-------------|
| eCl@ss 11.1 | 27-44-01-09 |
| ETIM 9.0 | EC003569 |

| | |
|---------------------|--|
| Product description | M16 Female panel mount connector, Contacts: 5 (05-a), unshielded, single wires, IP40 |
| Area | series 680 |
| Part no. | 09 0316 702 05 |

Assembly instructions / Panel cut-out



| | |
|---------------------|---|
| Product description | M16 Female panel mount connector, Contacts: 5 (05-a), unshielded, single wires, IP40 |
| Area | series 680 |
| Part no. | 09 0316 702 05 |

Security notices

The connector must not be plugged or unplugged under load. Non-observance and improper use can result in personal injury.

The connectors have been developed for applications in plant engineering, control and electrical equipment construction. The user is responsible for checking whether the connectors can also be used in other areas of application.

Connectors which are used in circuits with voltages dangerous to the touch may only be installed and used by, or under the supervision of, persons with electrical engineering training, taking into account the applicable regulations and standards.

The user must take suitable safety precautions to ensure that the connector cannot be accidentally disconnected.

The plug connector is not suitable for mains voltages Please observe the pollution degree and the overvoltage category. For further information, please refer to the download center "Technical Information".

To lock the cable connector with the device connector, the threaded ring is tightened "hand-tight" (approx. 60 cNm).