



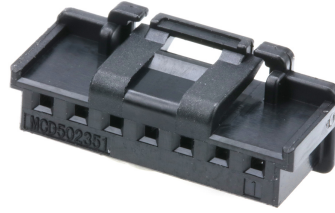
Part Number : [5023510701](#)

Product Description : DuraClik Wire-to-Board Receptacle Housing, Single Row, 7 Circuits, Black

Series Number : 502351

Status : Active

Product Category : Connector Housings



Documents & Resources

Drawings

[5023510701_sd.pdf](#)

3D Models and Design Files

[5023510701_stp.zip](#)

Specifications


[PK-502351-001-001.pdf](#)

[PS-502351-001-001.pdf](#) (Tin Plating)

[PS-502351-002-001.pdf](#) (Gold Plating)

Product Environment Compliance

Compliance

GADSL/IMDS	Compliant
China RoHS	
EU ELV	Compliant per 2000/53/EC
Low-Halogen Status	Not Low-Halogen per IEC 61249-2-21
REACH SVHC	Not Contained per D(2024)4144-DC (27 June 2024)
EU RoHS	Compliant per EU 2015/863

Multiple Part Product Compliance Statements

- Eu RoHS
- REACH SVHC
- Low-Halogen

Multiple Part Industry Compliance Documents

- IPC 1752A Class C

- IPC 1752A Class D
- Molex Product Compliance Declaration
- IEC-62474
- chemSHERPA (xml)

EU RoHS Certificate of Compliance

Part Details

General

Status	Active
Category	Connector Housings
Series	502351
Description	DuraClik Wire-to-Board Receptacle Housing, Single Row, 7 Circuits, Black
Application	Automotive, Signal, Wire-to-Board
Comments	Molex part has an inner-locking system versus an outer-locking system. Molex part with tail protection feature.
Product Name	DuraClik
UPC	887191427287

Physical

Circuits (maximum)	7
Color - Resin	Black
Gender	Receptacle
Glow-Wire Capable	No
Keying to Mating Part	Yes
Lock to Mating Part	Yes
Net Weight	0.297/g
Number of Rows	1
Packaging Type	Bag
Panel Mount	No
Pitch - Mating Interface	2.00mm
Polarized to Mating Part	Yes
Temperature Range - Operating	-40° to +105°C

Mates With / Use With

Mates with Part(s)

Description	Part Number
DuraClik Right-Angle Single Row Headers	<u>502352</u>
DuraClik Vertical Single Row Headers	<u>560020</u>

Use with Part(s)

Description	Part Number
Pre-Crimped Lead DuraClik Female-to-DuraClik Female, Tin (Sn) Plating, 150.00mm Length, 26 AWG, Black	<u>797581008</u>
Pre-Crimped Lead DuraClik Female-to-DuraClik Female, Tin (Sn) Plating, 300.00mm Length, 26 AWG, Black	<u>797581009</u>
DuraClik Female Crimp Terminals	<u>560085</u>
Micro-Latch Female Crimp Terminals	<u>50212</u>
DuraClik Female Terminals	<u>56161</u>