



**PennEngineering**  
**Corporate Headquarters – Danboro, PA**

5190 Old Easton Rd.

Danboro, PA 18916

**Phone:** 215-766-8853

**Toll-Free Phone:** 1-800-237-4736 (U.S. only)

**Email:** [info@pemnet.com](mailto:info@pemnet.com)

**Website:** [www.pemnet.com](http://www.pemnet.com)

**Part # KFSE-3.6-14, Broaching Standoffs - Types KFE, KFSE - Metric**

No matter how sophisticated or advanced, electronic components must be attached reliably and securely if they are to deliver optimum performance. We offer several fastener products for use with PC boards to satisfy component-to-board, board-to-board, and board-to-chassis attachment needs.

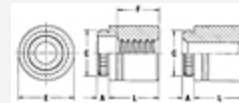
Broaching fasteners can also offer practical alternatives to “loose” hardware. They install permanently in all types of PC boards, as well as aluminum, acrylic, casting and polycarbonate components. A broaching

[+ more](#)



**Specifications**

<b>Thru Hole + 0.10 -0.08</b>	3.6 mm
<b>L - Length ± 0.13</b>	14 mm
<b>A (Shank) Max.</b>	1.53 mm
<b>Min. Sheet Thickness</b>	1.53 mm
<b>Hole Size in Sheet + 0.08</b>	5.41 mm
<b>C ± 0.08</b>	5.87 mm
<b>E ± 0.13</b>	7.14 mm
<b>Min. Dist. Hole C/L to Edge</b>	5.5 mm
<b>For Use in Sheet Hardness<sup>1</sup></b>	HRB 70 / HB 125 or Less PC Board
<b>Thread Specification</b>	Internal, ASME B1.13M, 6H
<b>Fastener Material</b>	300 Series Stainless Steel



<b>Standard Finish</b>	Passivated and/or tested	per ASTM A380
<b>CAD Supplier</b>	PennEngineering® (PEM®)	

<sup>1</sup> HRB - Hardness Rockwell "B" Scale. HB - Hardness Brinell.