

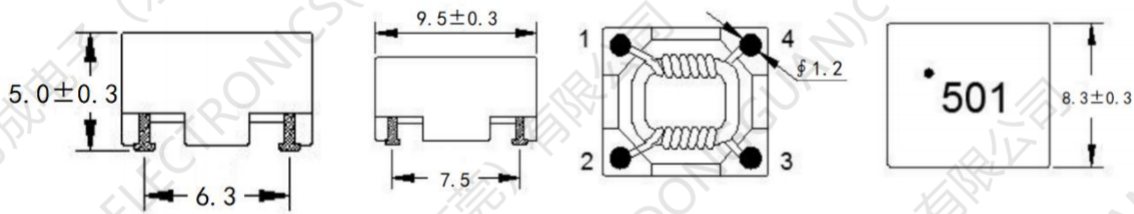
## SMD Common Mode Line Filter

### FC-SLF1050 –Series

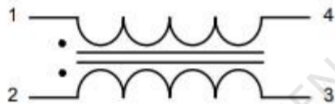
Low profile, only 5.3max  
 High Impedance up to: 1000Ω  
 Current Capabilit up to 5.0A  
 Operating temperature : -40°C to +125°C  
 Rated voltage 80 Vdc / 42 Vac



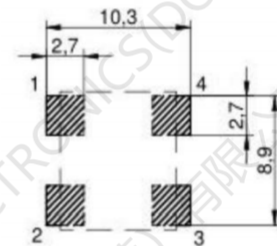
#### 1. Dimensions:mm



#### 2.Schematic:

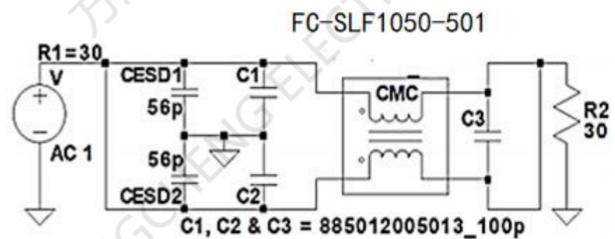
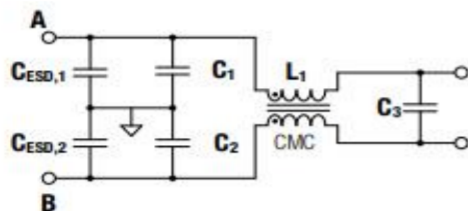


#### 3.LAYOUT RECOMMENDATION:(mm)



Land Pattern

#### 4.Application Fig:





# 方成电子（东莞）有限公司

## FC-SLF1050 -Series SMD Common Mode Line Filter

### 5. ELECTRIC CHARACTERISTICS

Part Number	Common mode Impedance ( $\Omega$ ) 100MHz	Inductance (uH) typ	LK (uH) Typ. (2-3 short)	RDC (m $\Omega$ )	Current Rating (A)
				1-4 2-3	
FC-SLF1050-501-LF	500 $\pm$ 25%	5.0	0.57	5.5	5.0
FC-SLF1050-801-LF	800 $\pm$ 25%	9.0	0.97	11	3.5
FC-SLF1050-102-LF	1000 $\pm$ 25%	11.0	1.30	30	2.5
FC-SLF1050-222-LF	2200 $\pm$ 25%	30.0	3.50	60	1.4

Electrical Specifications @ 25°C — Operating Temperature -40°C to +125°C.

Test equipment : Inductance 100KHZ/0.1V

Rated voltage 80 Vdc / 42 Vac

Hi-Pot ( N-N ): 250 Vac / 60 Hz , 3 mA / 1sec

### 6. Impedance. vs Frequency Insertion loss VS. Frequency\_:

