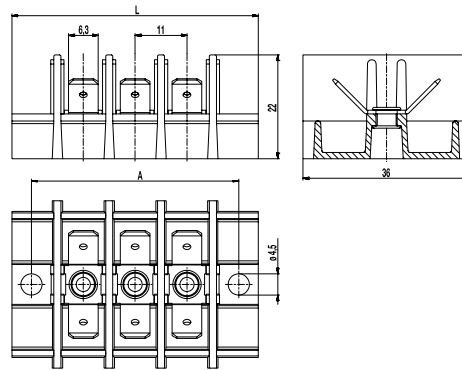


307-PC-/PCM

Tab/screw connector blocks
Star-shaped tab arrangement



L = (number of poles x pitch) + 19,3
A = (number of poles + 1) x pitch
Types of connection shown with package 3.077

GENERAL INFORMATION

Pitch	11 mm
No. of poles	2 - 21

TECHNICAL DATA

Clamping Range	solid / stranded / AWG		
	0,75-4 mm ² / 0,75-2,5 mm ² / 18-12 AWG [1]		
	0,5-1,5 mm ² / 0,5-1,5 mm ² / 20-16 AWG [2]		
Rated Cross Section	4 mm ² [1] / 1,5 mm ² [2]		
Wire Stripping Length	8 mm ± 0,5 mm		
Overvoltage Category	III	III	II
Pollution Severity Level	3	2	2
Rated Voltage	200 V	320 V	500 V
Rated Impulse Voltage	4 kV	4 kV	4 kV
Rated Insulation Voltage	250 V acc. to EN 60998-1 [3]		
Rated Current	7,5 A with receptacle 2,8; wire 1 mm ² (16 AWG)		
	15 A with receptacle 4,8; wire 2,5 mm ² (14 AWG)		
	20 A with receptacle 6,3; wire 6 mm ² (10 AWG)		
Torque	1,2 Nm		
Other specifications	Screw terminals are generally suitable for wires with identical wire type / cross-section.		

APPROVALS

	Current [A]	Voltage [V]	Group	AWG	[Nm]
	25	300	B	max. 10	[4][7][8]
	15	300	B	max. 14	[5][7][8]
	6	300	B	max. 16	[6][7][8]
	25	300	B	max. 10	[4]
	15	300	B	max. 10	[5]
	Current [A]	Voltage [V]	mm ²		
	[9]				

MATERIAL

Moulding	PC, black, V-0
Comparative Tracking Index	CTI 225
Temperature Range	-40°C up to 125°C
Tab	Nickel plated brass
Screw	M4; zinc plated steel, blue passivated
Tubular rivet	Tin plated copper

OPTIONS / ACCESSORIES

- Marking strips BST-307
- Jumpers 307-V, 307-VS
- Moulding made of polyamid

- [1] Screw connection
- [2] SAK version
- [3] for use with insulation receptacles 450 V
- [4] for use with insulation receptacles 6,3
- [5] for use with insulation receptacles 4,8
- [6] for use with insulation receptacles 2,8
- [7] for factory wiring only
- [8] Group C: 150 V
- [9] except XBS version

307-PC/-PCM

Tab/screw connector blocks

ADDITION: Assembly options and order information

Tab size	Assembly options					
 XBS	31.011	31.077	31.066	31.019	31.022	31.033
	31.101	31.103	31.112			
 4,8	8.011	8.077	8.066	8.019	8.022	8.033
	8.101	8.103	8.112			
 6,3	3.011	3.077	3.066	1.019	1.022	1.033
	3.101	1.103	1.112			

* This type of assembly (SAK-variants) features laterally raised edges preventing false insertion of wires with small cross-sections.

Assembly options

Please enter here the desired assembly type number.

If you order various sizes, please enclose drawing and enter here: **MIX**

Poles
02
up to
21

307-PCM/ -

one-tier tab connector (.011, .077, .066, .101, .201) only as „-PC“

Example ordering scheme for mixed assembly (“MIX”)

	31.019
	3.066
	8.077
	8.112
	3.011
	31.203
	3.011

When inquiring or ordering products for uniform assembly, stating the above designation is sufficient.

For mixed assembly (“MIX” as part of the type designation), we additionally need a drawing according to the example on the left.

The drawing must state the desired number of poles, the assembly of each pole and the assembly number.