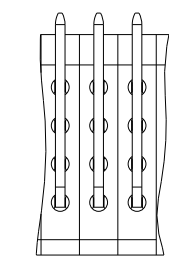
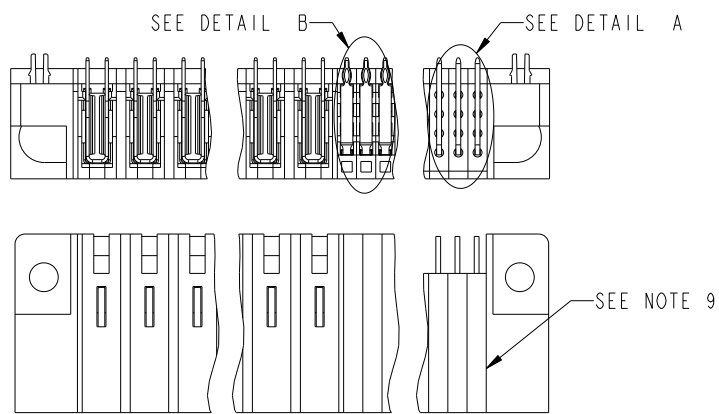


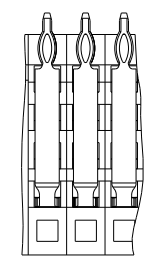


Copyright FCI.

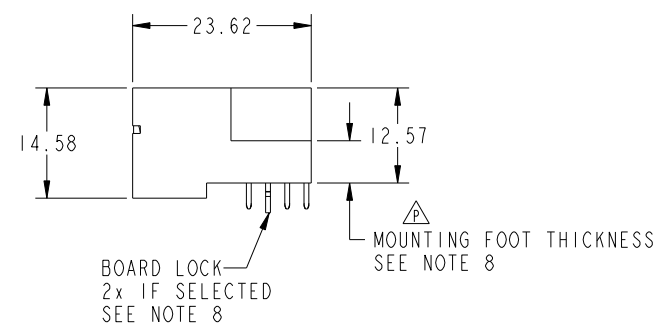
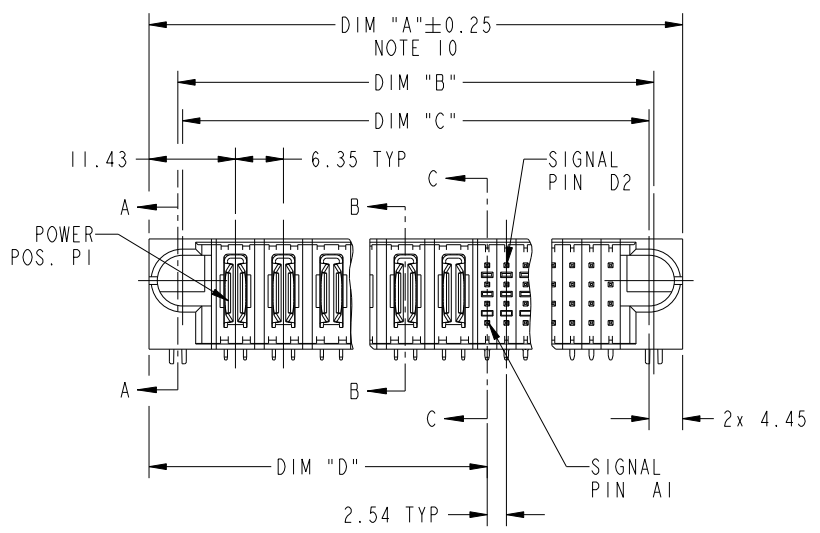
PRODUCT NUMBER
51722-ABBCCC00EF_--
SEE NOTE 1



DETAIL A
SCALE 2:1
FOR SOLDER TO BOARD ONLY



DETAIL B
SCALE 2:1
FOR PRESS FIT ONLY



spec ref *				dr	w wadmin	2006/05/26	projection 	MM 	size	A4	scale	1:1		
tolerance std ASME Y14.5	TOLERANCES UNLESS OTHERWISE SPECIFIED			eng	Ruan MT	2015/09/30			ecn no	ELX-DG-21593-1				
				chr	Fancy Zhang	2015/09/30								
				appr	Pei-Ming Zheng	2015/09/30								
product family							PwrBlade		rel level			Released		
surface 	linear	0.X	±0.5		title	R/A HEADER WITH GUIDE PIN POWER / SIGNAL				dwg no	51722		rev	P
		0.XX	±0.25											
		0.XXX	±0.100											
ASME Y14.5	angular	0°	±2°	www.fci.com	cat. no.	51722		Product - Customer Drw				sheet 1 of 3		

Print File - REV C - 2009-06-09



Copyright FCI.

PRODUCT NUMBER	DIM	LENGTH FORMULAS (SEE NOTE 10)
51722-ABBCCC00EF_	DIM "A"	6.35 x BB +2.54 x (CCC/4) +16.51(NOTE 10)
SEE NOTE 1	DIM "B"	6.35 x BB +2.54 x (CCC/4)+ 8.89
	DIM "C"	6.35 x BB +2.54 x (CCC/4) + 7.62
	DIM "D"	6.35 x BB + 9.53
	DIM "F"	6.35 x BB +2.54 x (CCC/4) + 17.27
	DIM "G"	6.35 x BB + 5.72

CONNECTOR NOTES

- ①. PRODUCT NUMBER CODE:
51722 - A BB CCC 00 E F LF

NO THIS SUFFIX:100u"/2.54um SnPb ON PCB INTERFACE

ADD THIS SUFFIX:78u"/2.00um Sn ON PCB INTERFACE

RETENTION TO PCB (NOTE 8)

TAIL OPTIONS (NOTE 7)

ALWAYS '00' (ZERO, ZERO)(NOTE 6)

NUMBER OF SIGNAL CONTACTS (NOTE 5)

NUMBER OF LEFT POWER CONTACTS (NOTE 4)

PLATING (NOTE 3)

BASE NUMBER
- ②. HOUSING MATERIAL: GLASS FILLED V-O HIGH TEMP THERMO PLASTIC.
SIGNAL CONTACT MATERIAL: COPPER ALLOY
POWER CONTACT MATERIAL: COPPER ALLOY
- ③. PLATING OPTION:
I = SEE PRINT 10064183 FOR PLATING SPEC OF 51722-1BBCCC00EF; 51722-1BBCCC00EFLF
B = SEE IN PRINT 10125789 FOR PLATING SPEC OF 51722-BBBCCC00EF; 51722-BBBCCC00EFLF
- ④. LEFT END POWER CONTACTS, 01 TO 20 AVAILABLE.
MAXIMUM OF 20 POWER CONTACTS PER CONNECTER.
- ⑤. SIGNAL CONTACTS, 004 TO 148 AVAILABLE.
- ⑥. THIS PART IS NOT AVAILABLE WITH RIGHT SIDE POWER CONTACTS.
- ⚠ ⑦. TAIL OPTIONS:
A = 3.43 SOLDER TO BOARD
B = 4.19 SOLDER TO BOARD
C = 3.43 PRESS FIT
D = 2.34 SOLDER TO BOARD

- ⑧. RETENTION TO PCB OPTIONS:
A = BOARD LOCK (REQUIRES 2.49 +0.05, -0.03 THRU HOLE IN PCB).
MOUNTING FOOT THICKNESS 5.59
B = 3.81 THRU HOLE (REQUIRES 4.01±0.07 THRU HOLE IN PCB).
MOUNTING FOOT THICKNESS 4.06
MOUNTING HOLES, WHERE APPLICABLE, ARE UNPLATED.
- ⑨. MANUFACTURE'S NAME, P/N, AND DATE CODE
TO APPEAR ON THIS SURFACE.
- ⑩. THE MAXIMUM OVERALL LENGTH (DIM A) OF A PART
IS 203.2
11. PRODUCT SPECIFICATION GS-12-149
APPLICATION SPECIFICATION BUS-20-067
12. REFERENCE 51697 FOR SELECT LOAD/FMLB WORKSHEET

PCB NOTES:

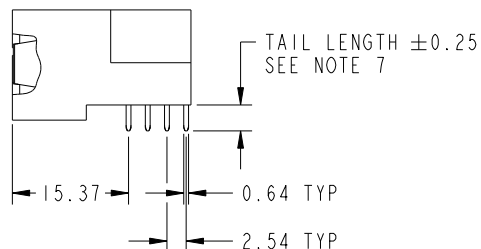
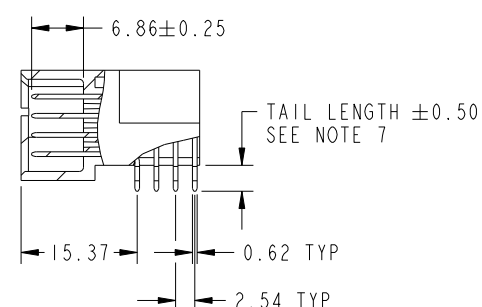
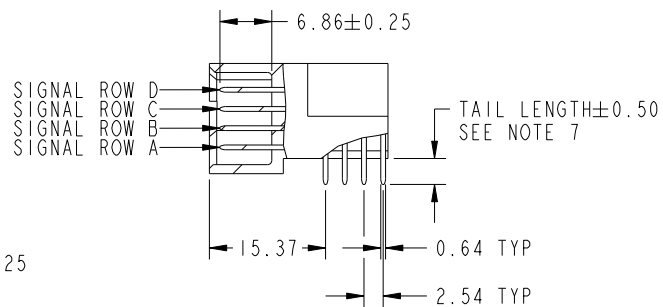
13. ALL DIMENSIONS ARE BASIC UNLESS OTHERWISE SPECIFIED.
14. ALL THROUGH HOLES ARE LOCATED WITH A
TRUE POSITION OF 0.10
15. ALL HOLE DIAMETERS ARE FINISHED HOLE SIZE.
- ⑩. Ø1.151±0.025 DRILLED HOLES PLATED WITH
0.008 MIN SnPb OR Sn OVER 0.03 TO 0.08
Cu PLATING TO ACHIEVE A 1.02±0.07 HOLE.
17. A ⚠ SYMBOL WILL BE NEXT TO ANY DIMENSION, VIEW, OR
NOTE WHICH HAS BEEN MODIFIED WITH THE CURRENT
DRAWING REVISION.
- ⑩. CONNECTOR KEEP OUT ZONE

dr	wcadmin	2006/05/26	<div>projection</div> <div></div>	<div>MM</div> <div></div>	size	A4	scale	1:1
eng	Ruan MT	2015/09/30			ecn no ELX-DG-21593-1			
chr	Fancy Zhang	2015/09/30						
appr	Pei-Ming Zheng	2015/09/30	product family PwrBlade		rel level	Released		
<div>FCi</div>		title R/A HEADER WITH GUIDE PIN POWER / SIGNAL			dwg no 51722		rev P	
www.fci.com		cat. no. 51722		Product - Customer Drw			sheet 2 of 3	

PRODUCT NUMBER

51722-ABBCCC00EF_

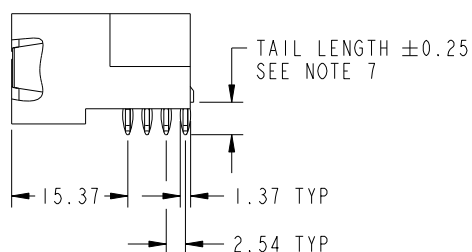
SEE NOTE 1



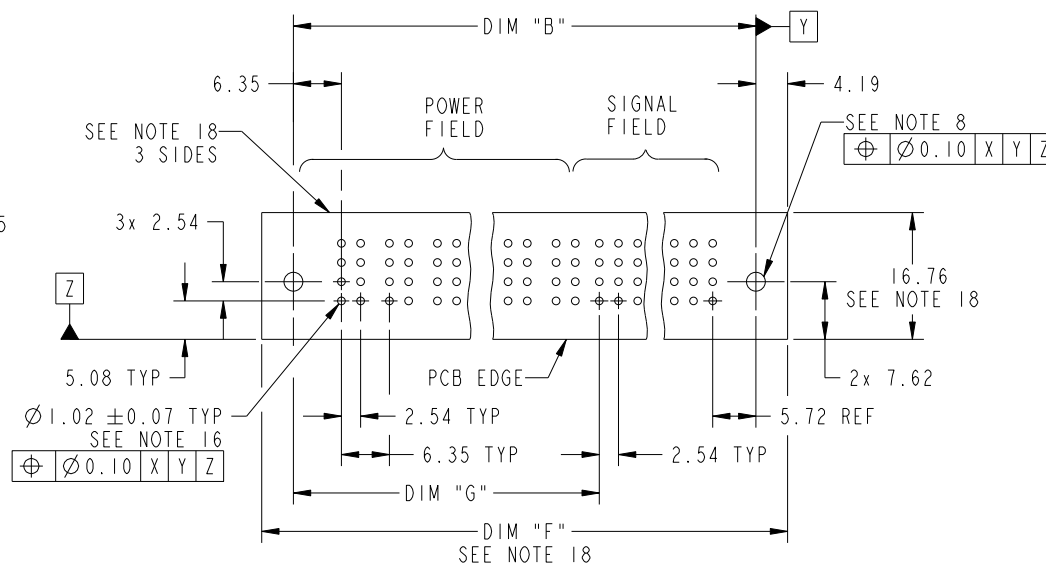
△ BROKEN-OUT SECTION B-B
FOR SOLD TO BOARD ONLY

△ BROKEN-OUT SECTION C-C
FOR SOLDER TO BOARD ONLY

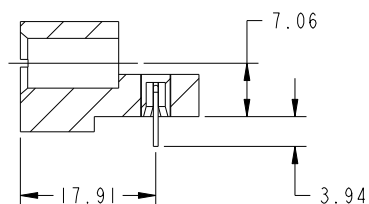
△ BROKEN-OUT SECTION C-C
FOR PRESS FIT ONLY



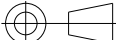


△ BROKEN-OUT SECTION B-B
FOR PRESS FIT ONLY



RECOMMENDED PCB LAYOUT



SECTION A-A

dr	w wadmin	2006/05/26	projection 	MM 	size	A4	scale	1:1
eng	Ruan MT	2015/09/30			ec n no	ELX-DG-21593-1		
chr	Fancy Zhang	2015/09/30			rel level	Released		
appr	Pei-Ming Zheng	2015/09/30	product family		PwrBlade			
		title			R/A HEADER WITH GUIDE PIN			rev
					POWER / SIGNAL			P
www.fci.com		cat. no.		51722	Product - Customer Drw			sheet 3 of 3
					dwg no			51722